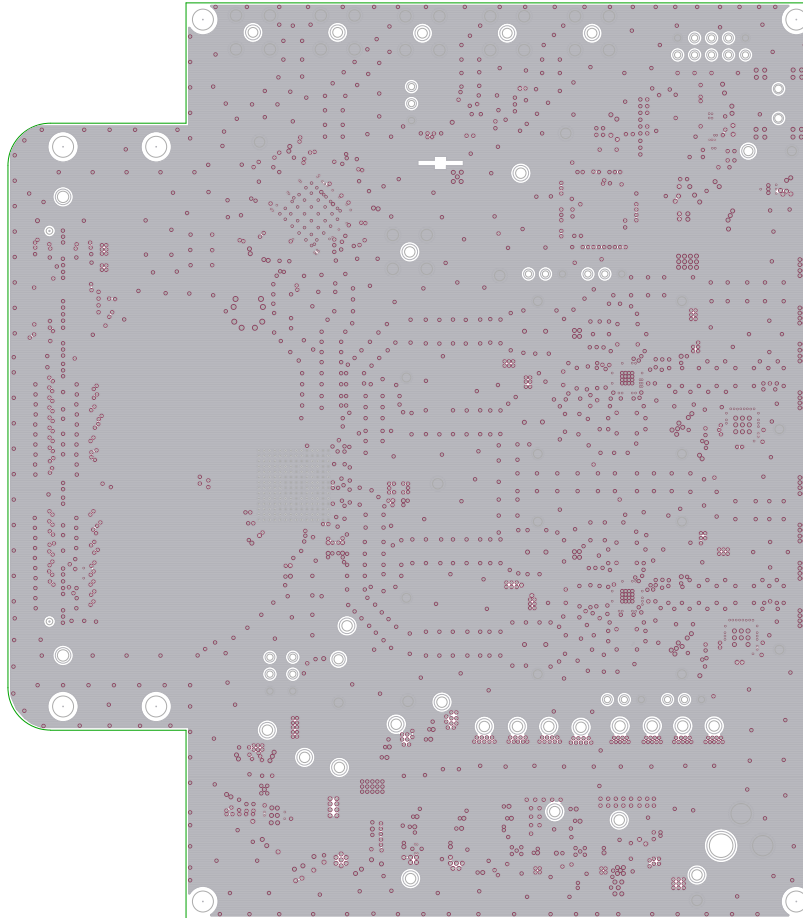
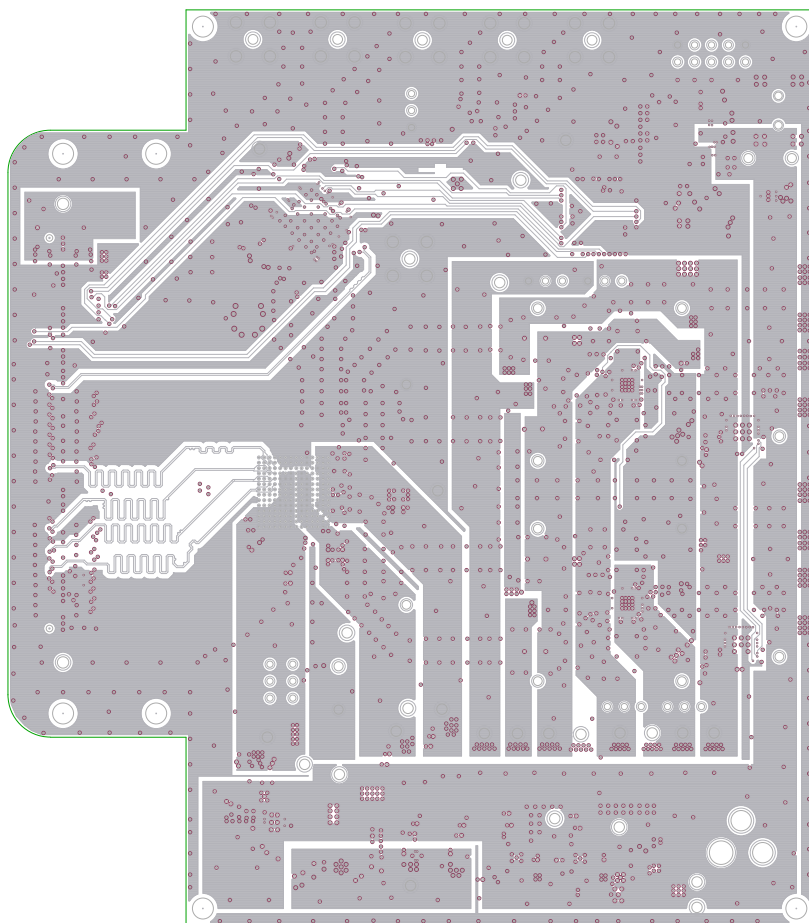




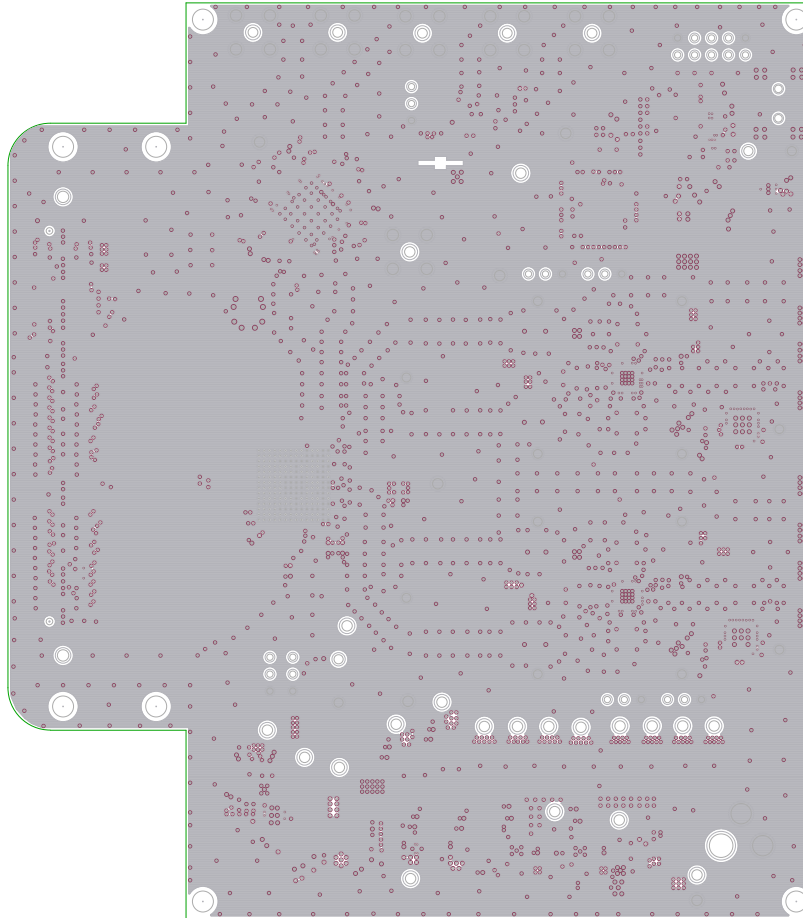
TEXAS INSTRUMENTS  
TSW30H84/SH84 EVM REV C  
SATEK SIKRENS IDOP



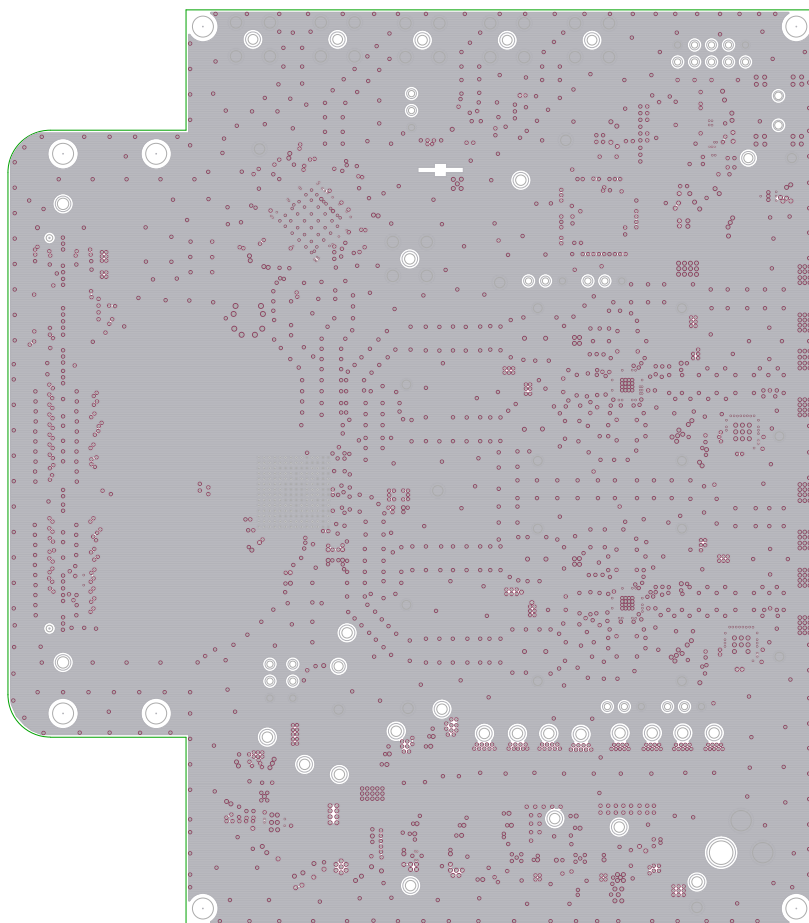
TEXAS INSTRUMENTS  
TSW30H84/SH84 EVM REV C  
LAYER 2 - GND



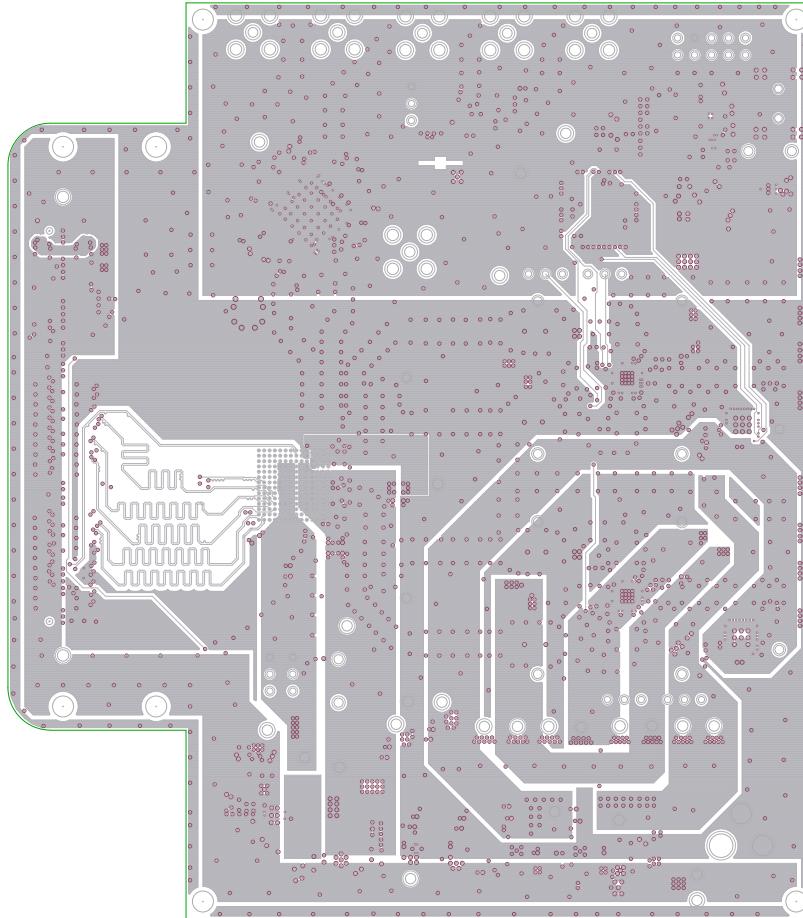
TEXAS INSTRUMENTS  
TSW30H84/SH84 EVM REV C  
LAYER 3 - POWER



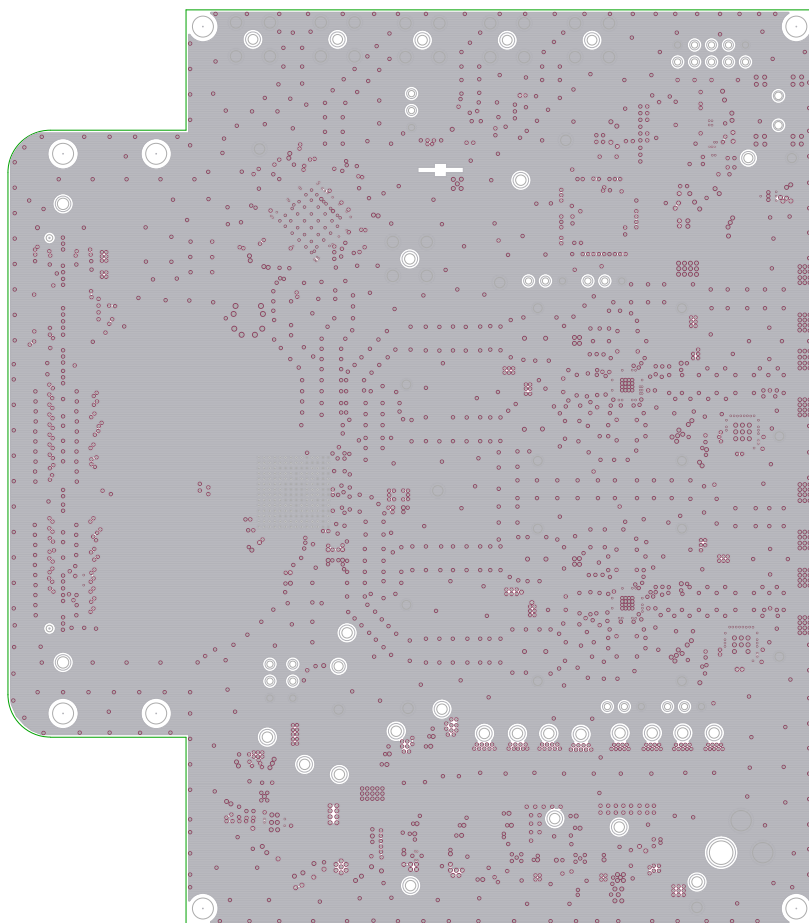
TEXAS INSTRUMENTS  
TSW30H84/SH84 EVM REV C  
LAYER 4 - GND



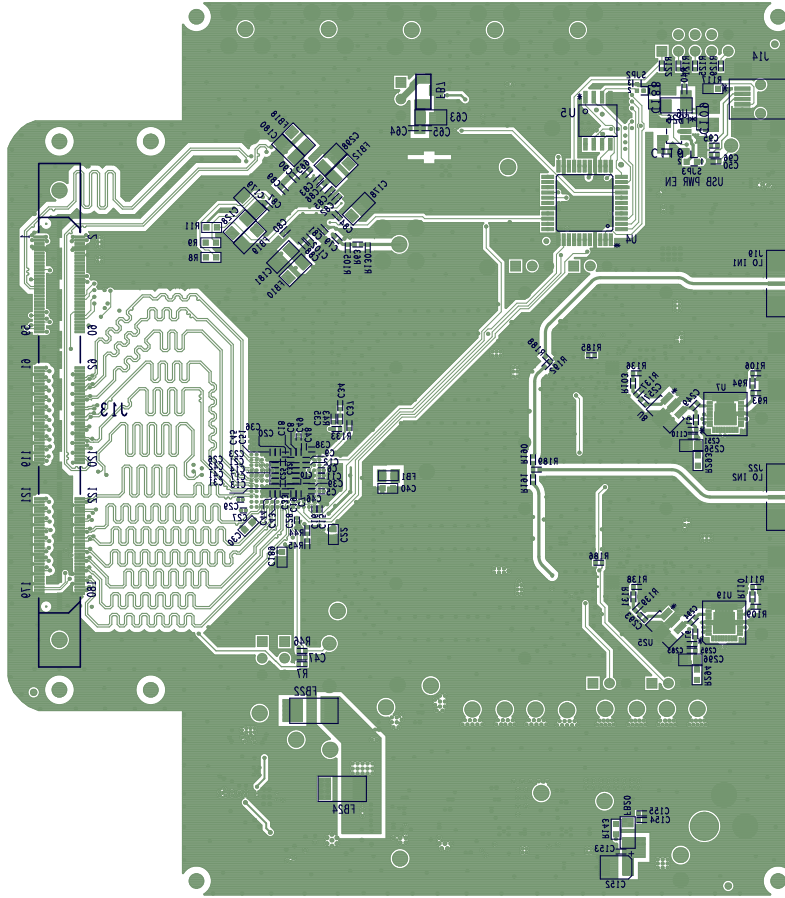
TEXAS INSTRUMENTS  
TSW30H84/SH84 EVM REV C  
LAYER 5 - GND



TEXAS INSTRUMENTS  
TSW30H84/SH84 EVM REV C  
LAYER 6 - POWER



TEXAS INSTRUMENTS  
TSW30H84/SH84 EVM REV C  
LAYER 7 - GND



TEXAS INSTRUMENTS  
 TSW30H84/SH84 EVM REV C  
 SOLDER SCREEN BOTTOM

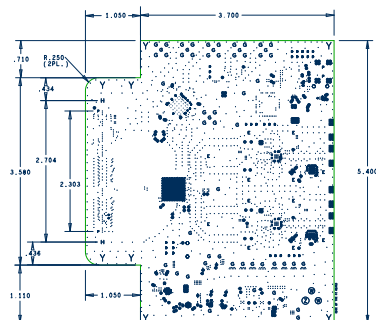


2		1		
REVISIONS				
ZONE	LTR	DESCRIPTION	DATE	APPROVED

13. ALL OUTER LAYERS USING A 5.5 mil TRACE WIDTH SHALL BE 50ohms SINGLE ENDED, +/- 10% TOLERANCE.  
ALL OUTER LAYERS USING A N/A mil TRACE WIDTH SHALL BE 100ohms SINGLE ENDED, +/- 10% TOLERANCE.  
ALL OUTER LAYERS USING A 7.5 mil TRACE WIDTH AND 6.0 mil SPACING SHALL BE 100 ohms DIFFERENTIAL, +/- 10% TOLERANCE.  
ALL INNER LAYERS USING A 4.0 mil TRACE WIDTH AND 6.5 mil SPACING SHALL BE 100 ohms DIFFERENTIAL, +/- 10% TOLERANCE.
14. MINIMUM COPPER CONDUCTOR WIDTH IS: 5MIL.  
MINIMUM COPPER SPACING IS: 4.5MIL.
15. SMOBC/IMMERSION GOLD: 3-8 uIN OVER 100-200 uIN NICKEL PLATING.
16. GROUND ETCH ON ALL LAYERS TO BOARD EDGE IS INTENTIONAL. DO NOT PULL BACK.
17. NO CHANGES TO ANY ARTWORK ARE PERMITTED WITHOUT WRITTEN AUTHORIZATION.
18. HOLES SIZE APPLIES AFTER PLATING. TOLERANCE TO BE +.003/- .010.
19. FILL 6MIL AND 8MIL VIAS WITH NON CONDUCTIVE MATERIAL.
20. FINISHED BOARDS MUST BE RHES COMPLIANT AND SURVIVE A LEAD FREE ASSEMBLY, MAXIMUM REFLOW TEMPERATURE OF 260 DEGREE C ( 6 PASSES ).

Layer	Material / Specification
LAYER 1	Copper Foil 0.5oz / Plate to 1.0oz min Layer 1
LAYER 2	FR-370HR
LAYER 3	Pre-preg 0.011" (material)
LAYER 4	Copper 0.006 1.0oz / 1.0oz Layer 2 & 3
LAYER 5	FR-370HR
LAYER 6	Pre-preg 0.0054" (material)
LAYER 7	Copper 0.006" 1.0oz / 1.0oz Layer 4 & 5
LAYER 8	FR-370HR
LAYER 9	Pre-preg 0.0054" (material)
LAYER 10	Copper 0.006" 1.0oz / 1.0oz Layer 6 & 7
LAYER 11	FR-370HR
LAYER 12	Pre-preg 0.011" (material)
LAYER 13	Copper Foil 0.5oz / Plate to 1.0oz min Layer 8

DRILL CHART: TOP to BOTTOM			
ALL UNITS ARE IN MILS			
FIGURE	SIZE	PLATED	QTY
*	6.0	PLATED	116
*	8.0	PLATED	39
*	8.0	PLATED	196
*	10.0	PLATED	1747
*	12.0	PLATED	96
*	12.0	PLATED	213
*	13.0	PLATED	17
*	15.0	PLATED	8
*	38.0	PLATED	31
*	53.0	PLATED	12
*	55.0	PLATED	4
*	59.0	PLATED	5
*	62.0	PLATED	26
*	67.0	PLATED	24
*	68.0	PLATED	2
⊙	120.0	PLATED	2
⊙	140.0	PLATED	1
*	40.0	NON-PLATED	2
*	45.0	NON-PLATED	2
Y	125.0	NON-PLATED	8



UNLESS OTHERWISE SPECIFIED DIMENSIONS ARE IN INCHES TOLERANCES ARE: FRACTIONS DECIMALS ANGLES +/- .XX +/- .01 +/- .XXX +/- .005 +/-	CONTRACT NO.		TEXAS INSTRUMENTS INC.	
	APPROVALS	DATE	FABRICATION DRAWING	
	DRAWN L. NGUYEN	09-01-11	TSW30H/SH84EVM	
	ENGR K. HSEA			
MATERIAL			SIZE	CODE IDENT NO
SEE NOTE 5			B	DRAWING NO.
FINISH				REV.
SEE NOTES 7, 8, 9				C
DO NOT SCALE DRAWING			SCALE	SHEET 1 OF 1
			NONE	