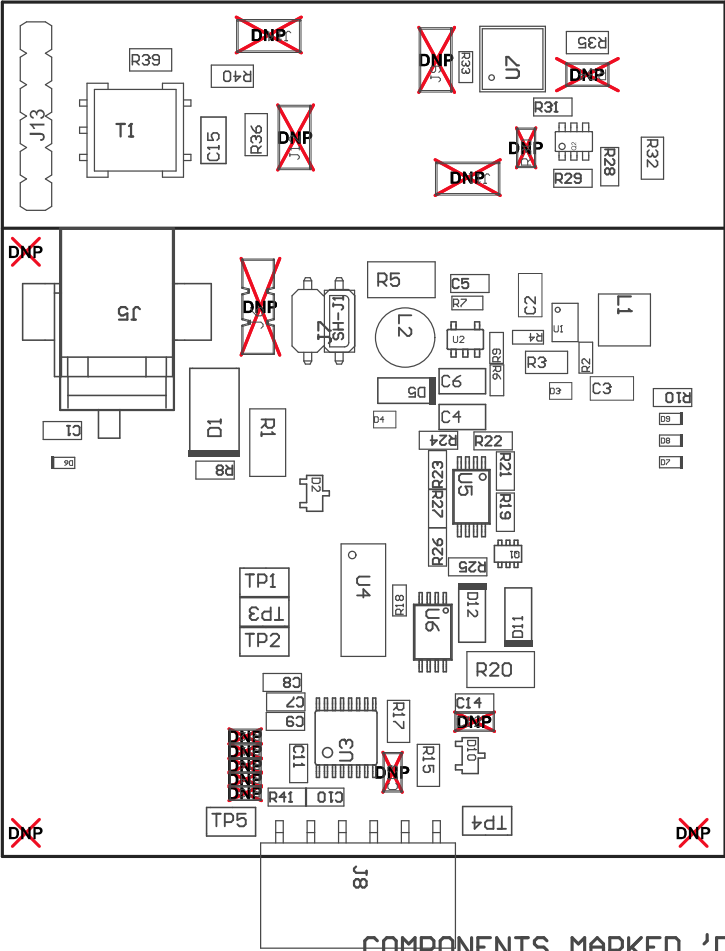
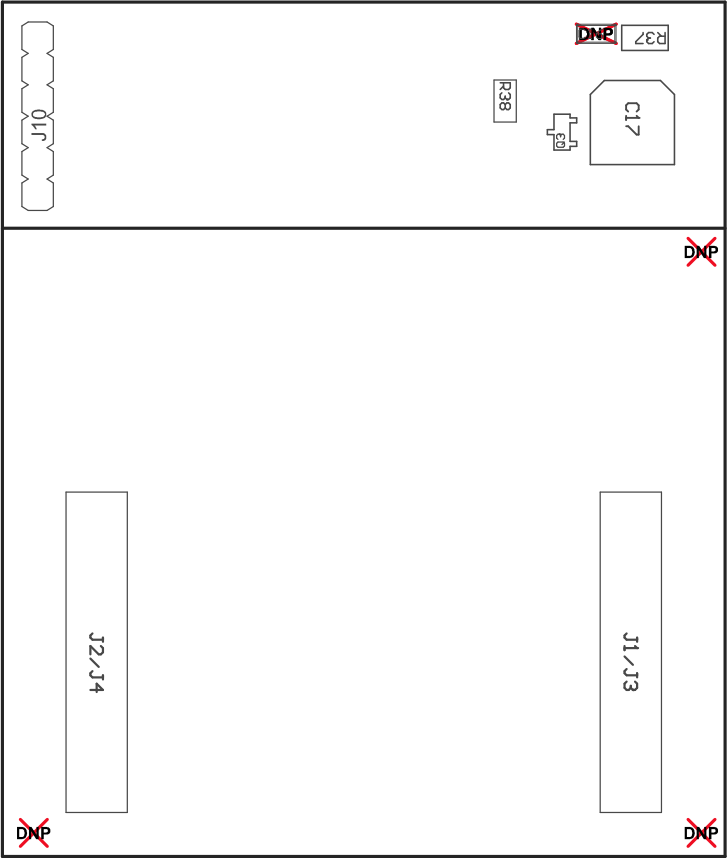


- ZZ1 ■ These assemblies are ESD sensitive, ESD precautions shall be observed.
- ZZ2 ■ These assemblies must be clean and free from flux and all contaminants. Use of no clean flux is not acceptable.
- ZZ3 ■ These assemblies must comply with workmanship standards IPC-A-610 Class 2, unless otherwise specified.
- ZZ4 ■ Add score line between boards for separation post-assembly.
- ZZ5 ■ Connect MA58MF14-7N (H1) XDCR to J12 holes. Black wired pin must be connected to GND_XD (-).



PCB VIEWED FROM TOP SIDE	BOARD #: MSA004	REV: A	SUN REV: Not In VersionControl
	TID #: N/A		
PLOT NAME = Top Assembly Drawing	GENERATED : 2/7/2017 11:50:38 AM	TEXAS INSTRUMENTS	



COMPONENTS MARKED 'DNP' SHOULD NOT BE POPULATED.
ASSEMBLY VARIANT: 001

PCB VIEWED FROM BOTTOM SIDE	BOARD #: MSA004	REV: A	SUN REV: Not In VersionControl
	TID #: N/A		
PLOT NAME = Bottom Assembly Drawing	GENERATED : 2/7/2017	11:50:39 AM	TEXAS INSTRUMENTS