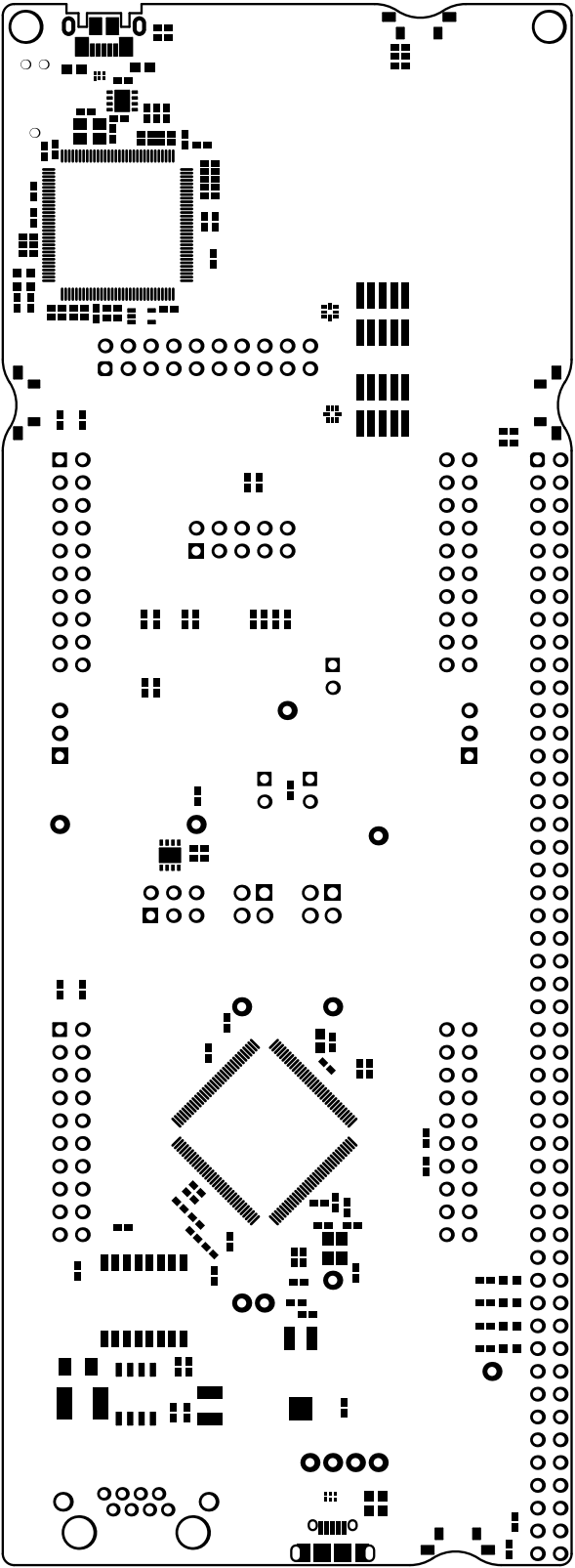
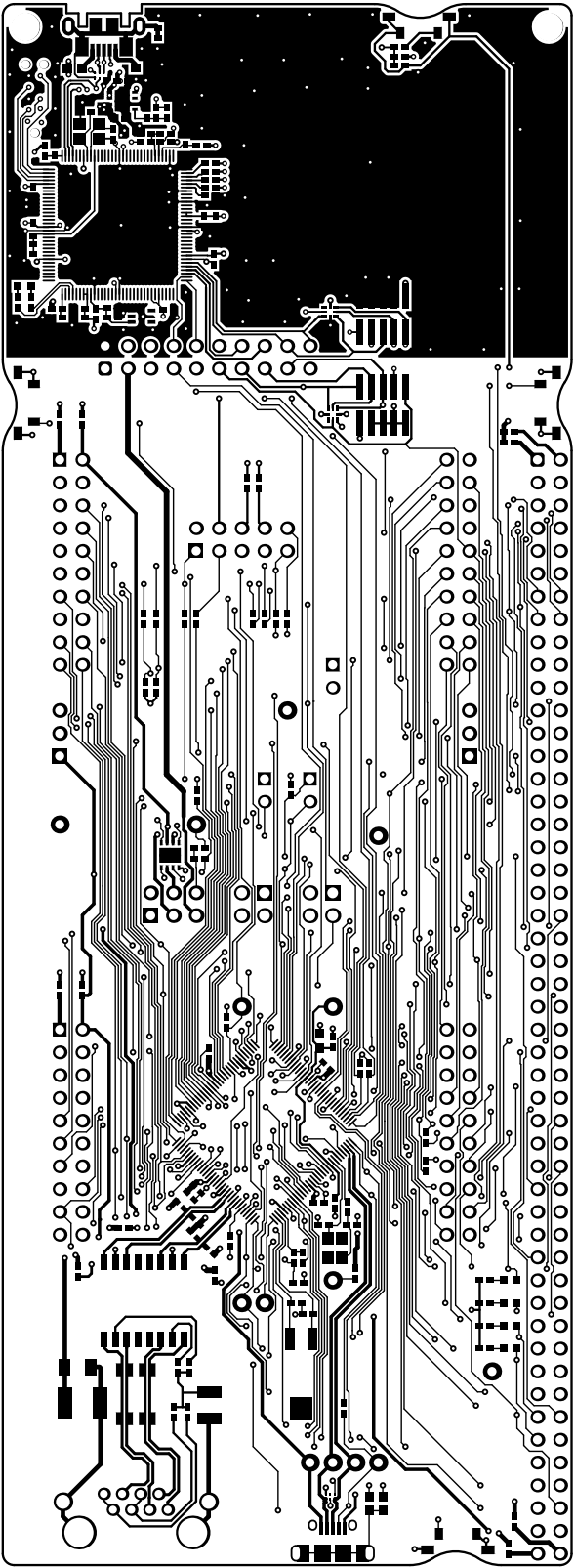


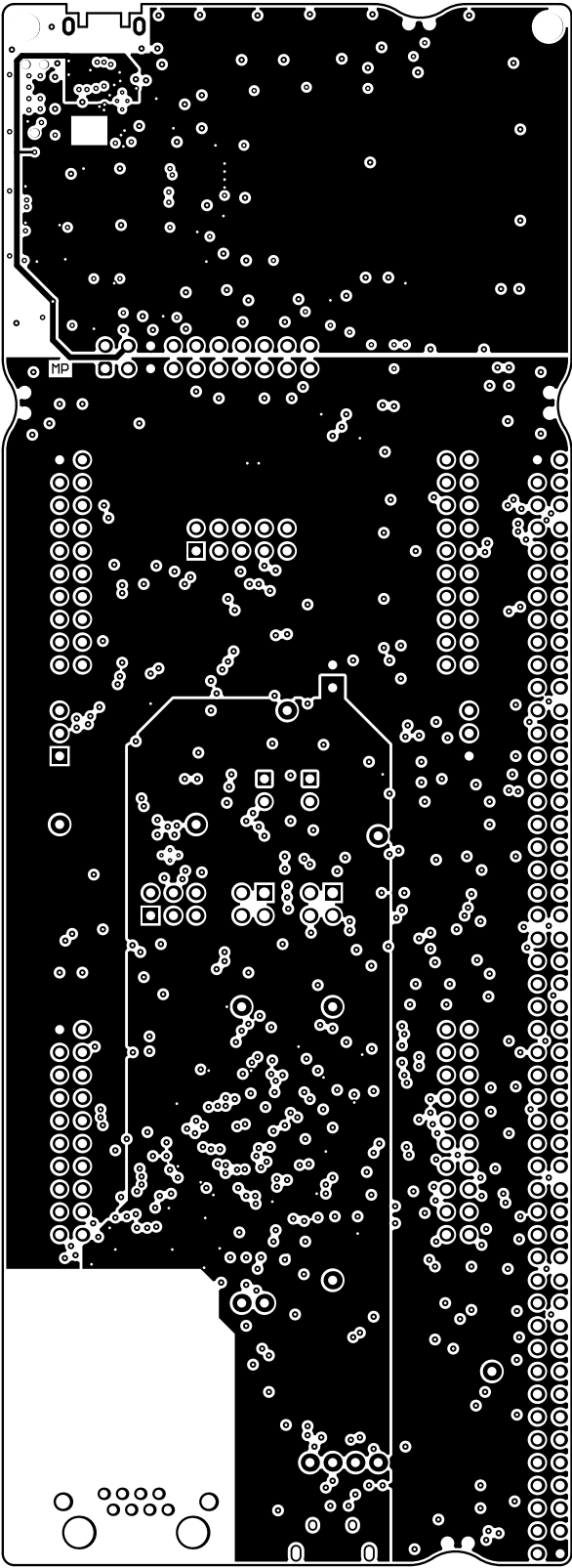
ALL ARTWORK VIEWED FROM TOP SIDE	BOARD #: MCU023	REV: 1.0	SUN REV: Not In VersionControl
LAYER NAME = Top Overlay	TID #: N/A		
PLOT NAME = Top Overlay	GENERATED : 10/12/2017 3:34:33 PM		TEXAS INSTRUMENTS



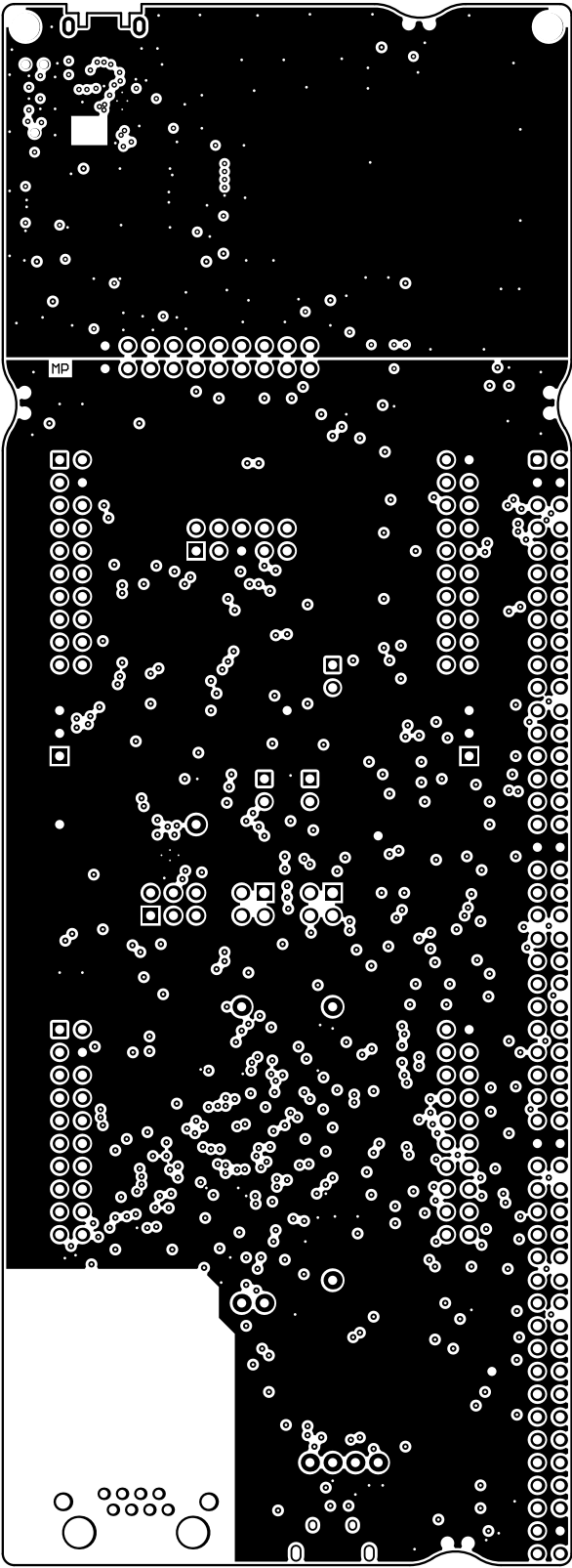
ALL ARTWORK VIEWED FROM TOP SIDE	BOARD #: MCU023	REV: 1.0	SUN REV: Not In VersionControl
LAYER NAME = Top Solder	TID #: N/A		
PLOT NAME = Top Solder Mask	GENERATED : 10/12/2017 3:34:35 PM		TEXAS INSTRUMENTS



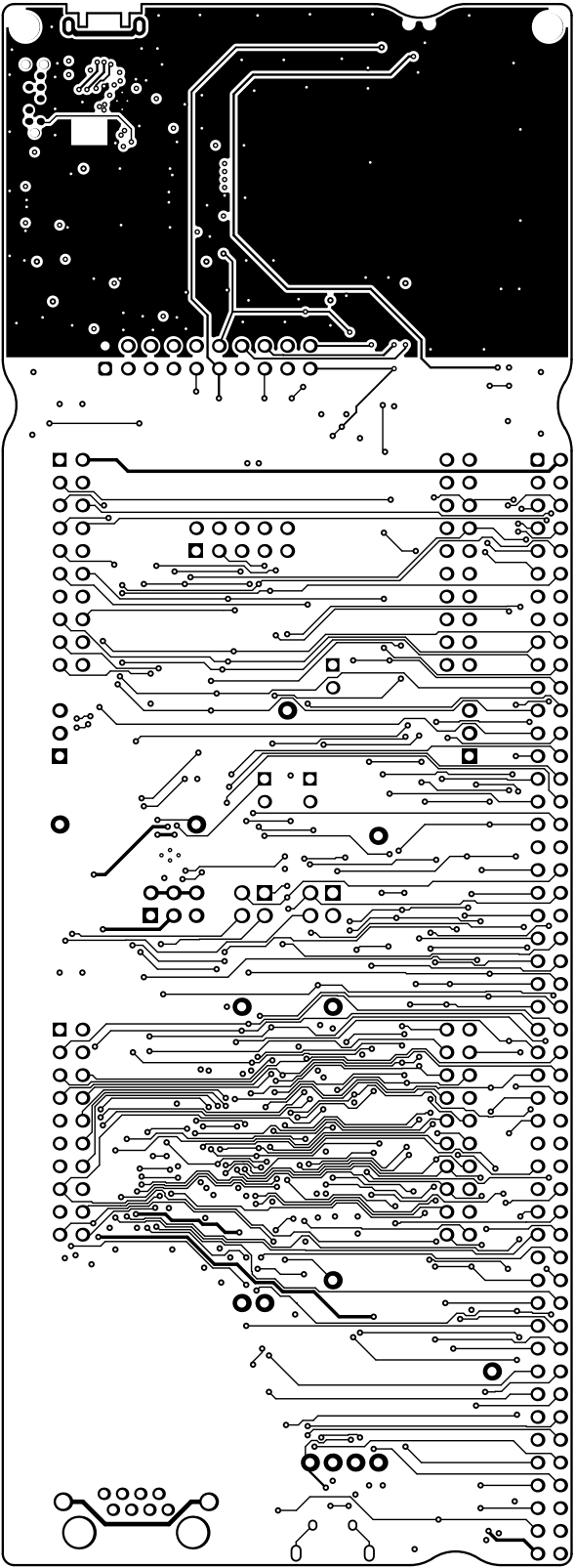
ALL ARTWORK VIEWED FROM TOP SIDE	BOARD #: MCU023	REV: 1.0	SUN REV: Not In VersionControl
LAYER NAME = Top Layer	TID #: N/A		
PLOT NAME = Top Layer	GENERATED : 10/12/2017 3:34:36 PM		TEXAS INSTRUMENTS



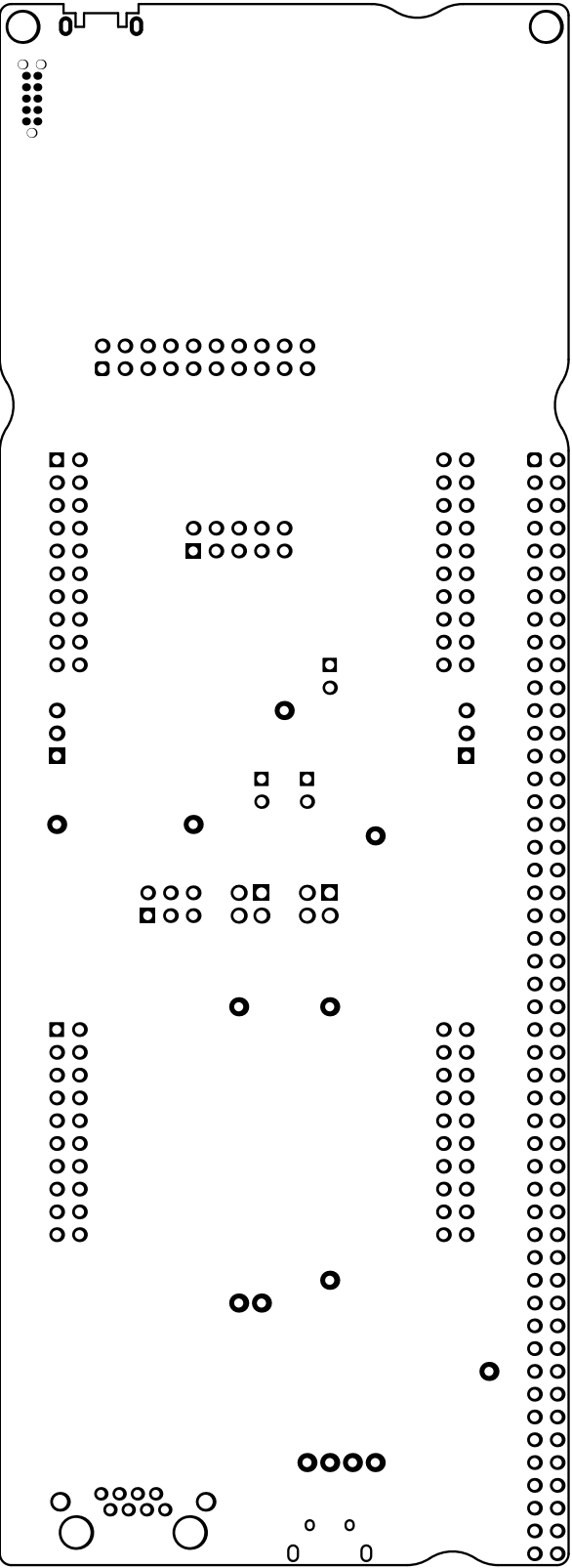
ALL ARTWORK VIEWED FROM TOP SIDE	BOARD #: MCU023	REV: 1.0	SUN REV: Not In VersionControl
LAYER NAME = VCC Layer	TID #: N/A		
PLOT NAME = Signal Layer 1	GENERATED : 10/12/2017 3:34:37 PM		TEXAS INSTRUMENTS



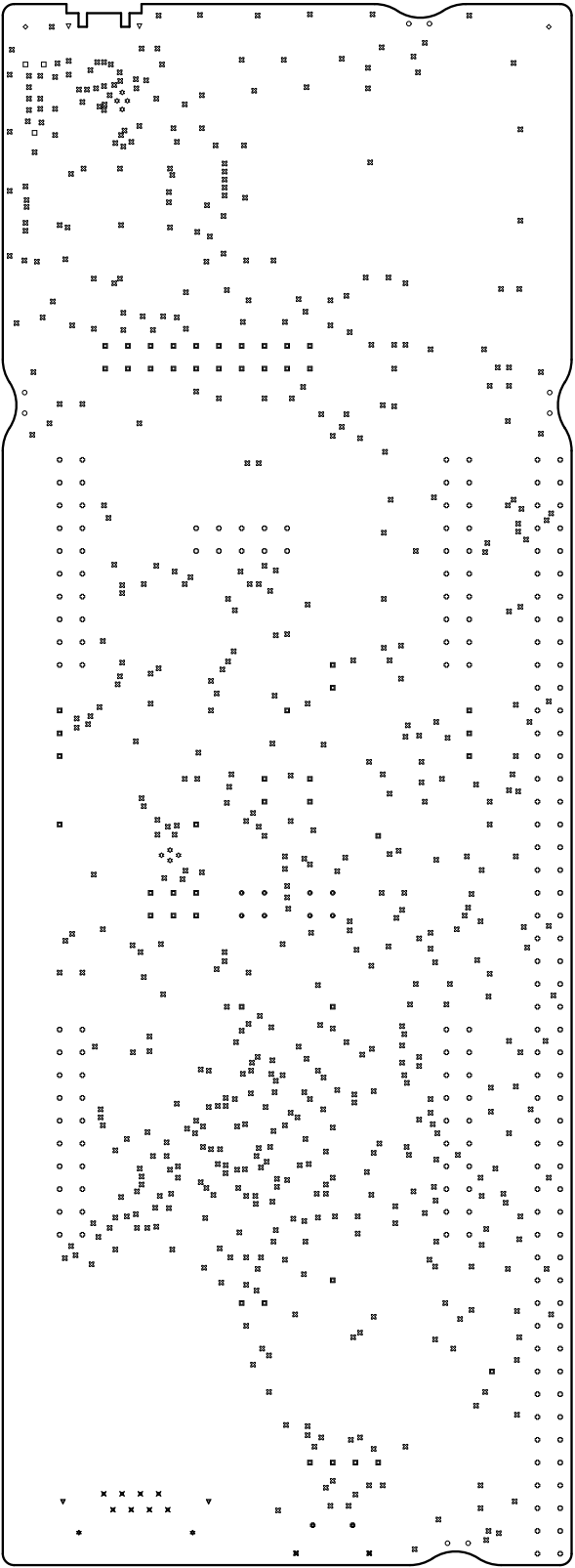
ALL ARTWORK VIEWED FROM TOP SIDE	BOARD #: MCU023	REV: 1.0	SUN REV: Not In VersionControl
LAYER NAME = GND Layer	TID #: N/A		
PLOT NAME = Signal Layer 2	GENERATED : 10/12/2017 3:34:39 PM		TEXAS INSTRUMENTS



ALL ARTWORK VIEWED FROM TOP SIDE	BOARD #: MCU023	REV: 1.0	SUN REV: Not In VersionControl
LAYER NAME = Bottom Layer	TID #: N/A		
PLOT NAME = Bottom Layer	GENERATED : 10/12/2017 3:34:40 PM		TEXAS INSTRUMENTS



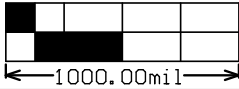
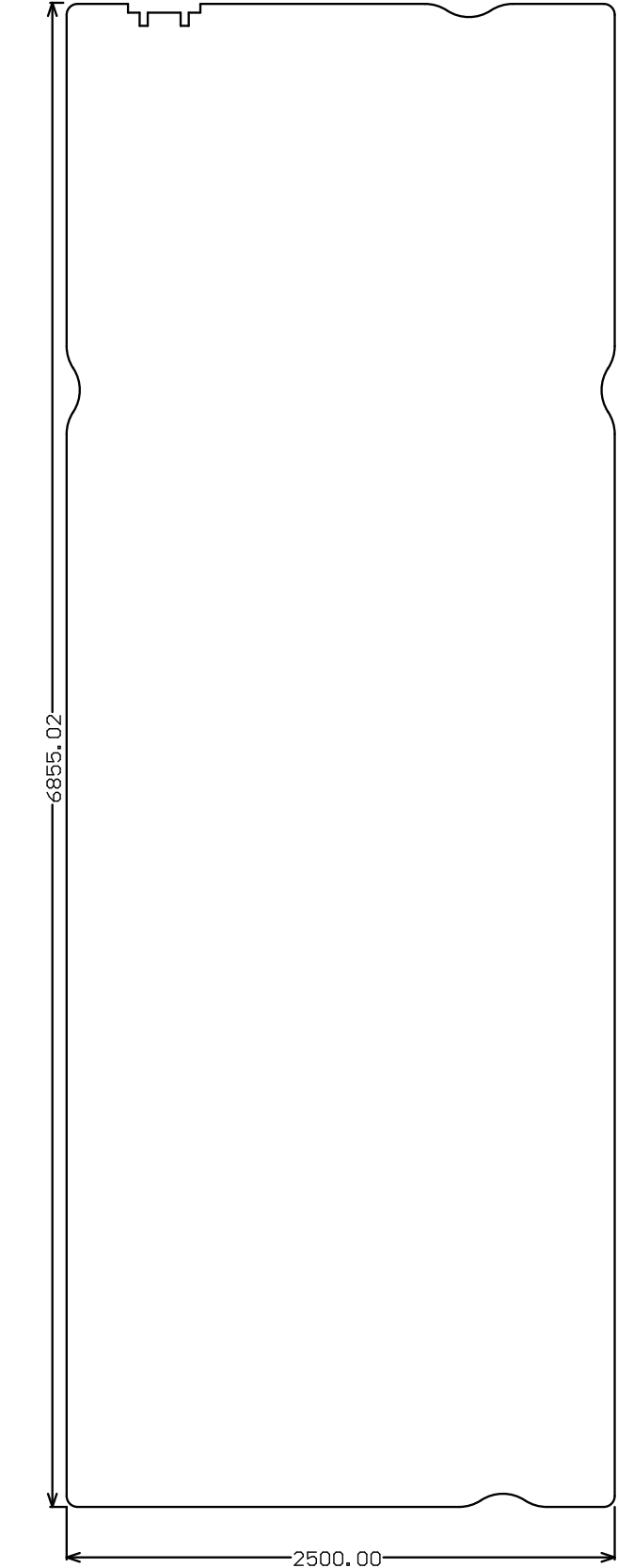
ALL ARTWORK VIEWED FROM TOP SIDE	BOARD #: MCU023	REV: 1.0	SUN REV: Not In VersionControl
LAYER NAME = Bottom Solder	TID #: N/A		
PLOT NAME = Bottom Solder Mask	GENERATED : 10/12/2017 3:34:41 PM		TEXAS INSTRUMENTS



Symbol	Quantity	Finished Hole Size	Plated	Hole Type	Drill Layer Pair	Hole Tolerance	Hole Length
○	8	35.43mil (0.900mm)	NPTH	Round	Top Layer - Bottom Layer		-
□	3	39.00mil (0.991mm)	NPTH	Round	Top Layer - Bottom Layer		-
◇	2	125.00mil (3.175mm)	NPTH	Round	Top Layer - Bottom Layer		-
☆	8	7.87mil (0.200mm)	PTH	Round	Top Layer - Bottom Layer		-
⊠	594	12.00mil (0.305mm)	PTH	Round	Top Layer - Bottom Layer		-
✕	8	35.04mil (0.890mm)	PTH	Round	Top Layer - Bottom Layer		-
■	52	40.00mil (1.016mm)	PTH	Round	Top Layer - Bottom Layer		-
⊕	188	40.16mil (1.020mm)	PTH	Round	Top Layer - Bottom Layer		-
⦿	8	47.24mil (1.200mm)	PTH	Round	Top Layer - Bottom Layer		-
▼	2	61.81mil (1.570mm)	PTH	Round	Top Layer - Bottom Layer		-
★	2	128.00mil (3.251mm)	PTH	Round	Top Layer - Bottom Layer		-
▽	2	23.62mil (0.600mm)	PTH	Slot	Top Layer - Bottom Layer		51.18mil (1.300mm)
⊗	2	25.59mil (0.650mm)	PTH	Slot	Top Layer - Bottom Layer		33.46mil (0.850mm)
⊠	2	32.48mil (0.825mm)	PTH	Slot	Top Layer - Bottom Layer		59.06mil (1.500mm)
	881 Total						

Slot definitions : Routed Path Length = Calculated from tool start centre position to tool end centre position.
Hole Length = Routed Path Length + Tool Size = Slot length as defined in the PCB layout

ALL ARTWORK VIEWED FROM TOP SIDE	BOARD #: MCU023	REV: 1.0	SUN REV: Not In VersionControl
LAYER NAME = Drill Drawing	TID #: N/A		
PLOT NAME = Drill Drawing	GENERATED : 10/12/2017 3:34:44 PM		TEXAS INSTRUMENTS



ALL ARTWORK VIEWED FROM TOP SIDE	BOARD #: MCU023	REV: 1.0	SUN REV: Not In VersionControl
LAYER NAME = M2 Board Dimensions	TID #: N/A		
PLOT NAME = Board Dimensions	GENERATED : 10/12/2017 3:34:46 PM		TEXAS INSTRUMENTS