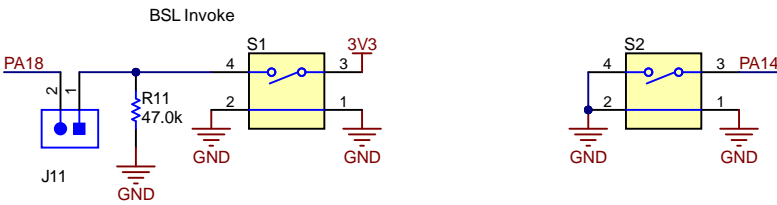
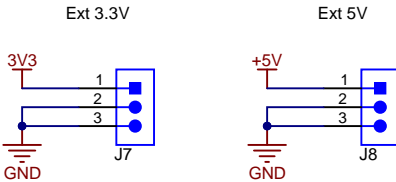


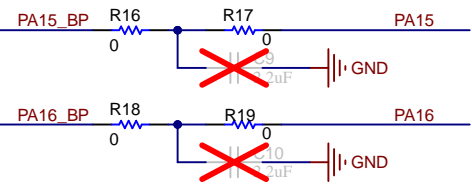
General Purpose Switches



Power

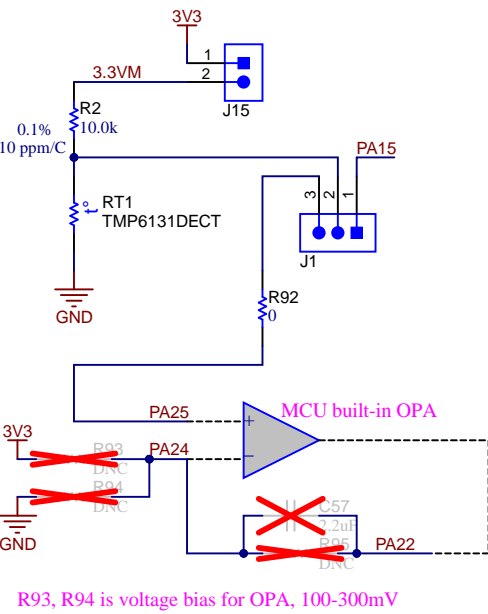


RC Filter for ADC Input

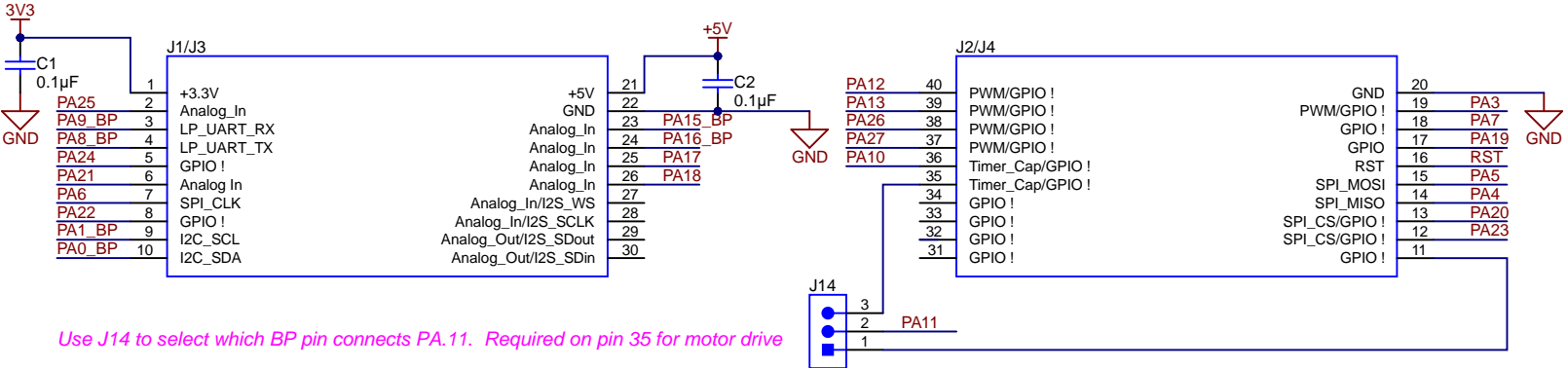


Thermistor Circuit

Connect J1.2 & J1.3 to enable Thermistor to OPA
Connect J1.1 & J1.2 to enable Thermistor to ADC
Unpopulate J15 to disconnect thermistor from power



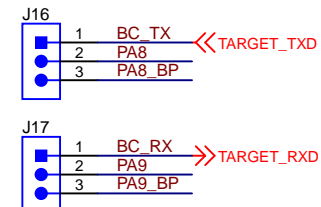
BoosterPack Interface



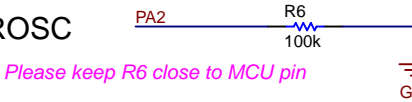
Use J14 to select which BP pin connects PA.11. Required on pin 35 for motor drive

UART Selection

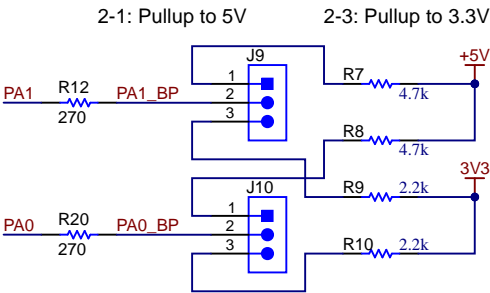
Select 1-2 for Backchannel UART
Select 2-3 for UART to BP Interface



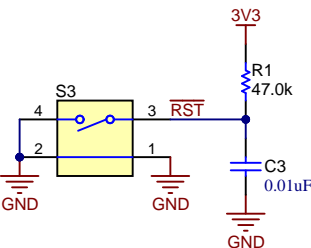
ROSC



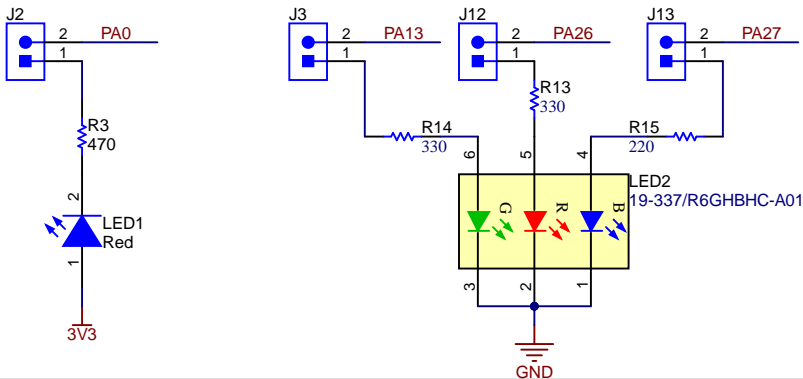
5V and 3.3V Pullup for Open-Drain IOs



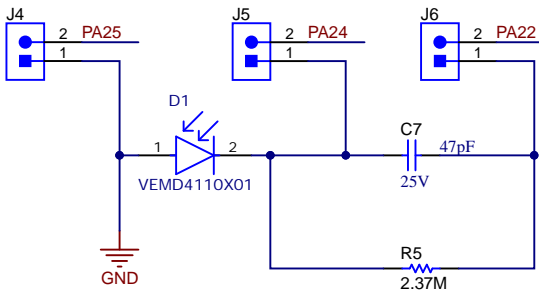
Reset Switch

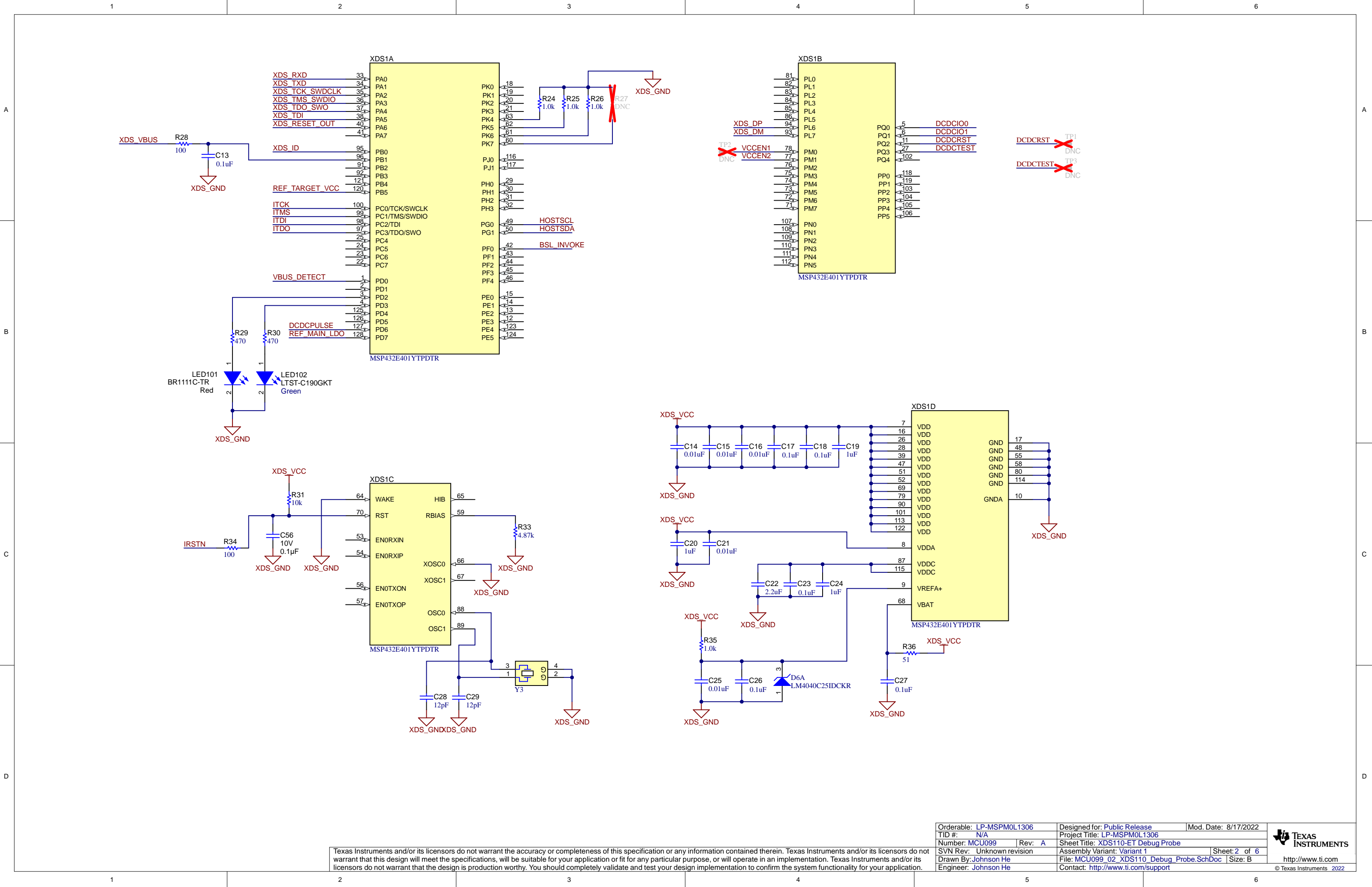


LEDs



Photodiode Circuit

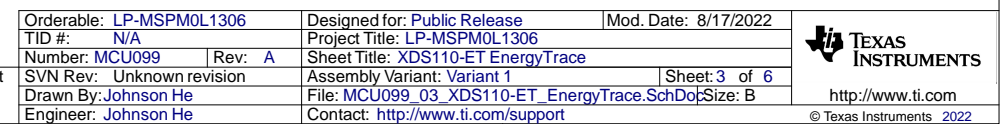




Texas Instruments and/or its licensors do not warrant the accuracy or completeness of this specification or any information contained therein. Texas Instruments and/or its licensors do not warrant that this design will meet the specifications, will be suitable for your application or fit for any particular purpose, or will operate in an implementation. Texas Instruments and/or its licensors do not warrant that the design is production worthy. You should completely validate and test your design implementation to confirm the system functionality for your application.

Orderable: LP-MSPM0L1306	Designed for: Public Release	Mod. Date: 8/17/2022
TID #: N/A	Project Title: LP-MSPM0L1306	
Number: MCU099	Rev: A	Sheet Title: XDS110-ET Debug Probe
SVN Rev: Unknown revision	Assembly Variant: Variant 1	Sheet: 2 of 6
Drawn By: Johnson He	File: MCU099_02_XDS110_Debug_Probe.SchDoc	Size: B
Engineer: Johnson He	Contact: http://www.ti.com/support	

Energy measurement method protected under U.S. Patent Application 13/329,073 and subsequent patent applications



A

B

C

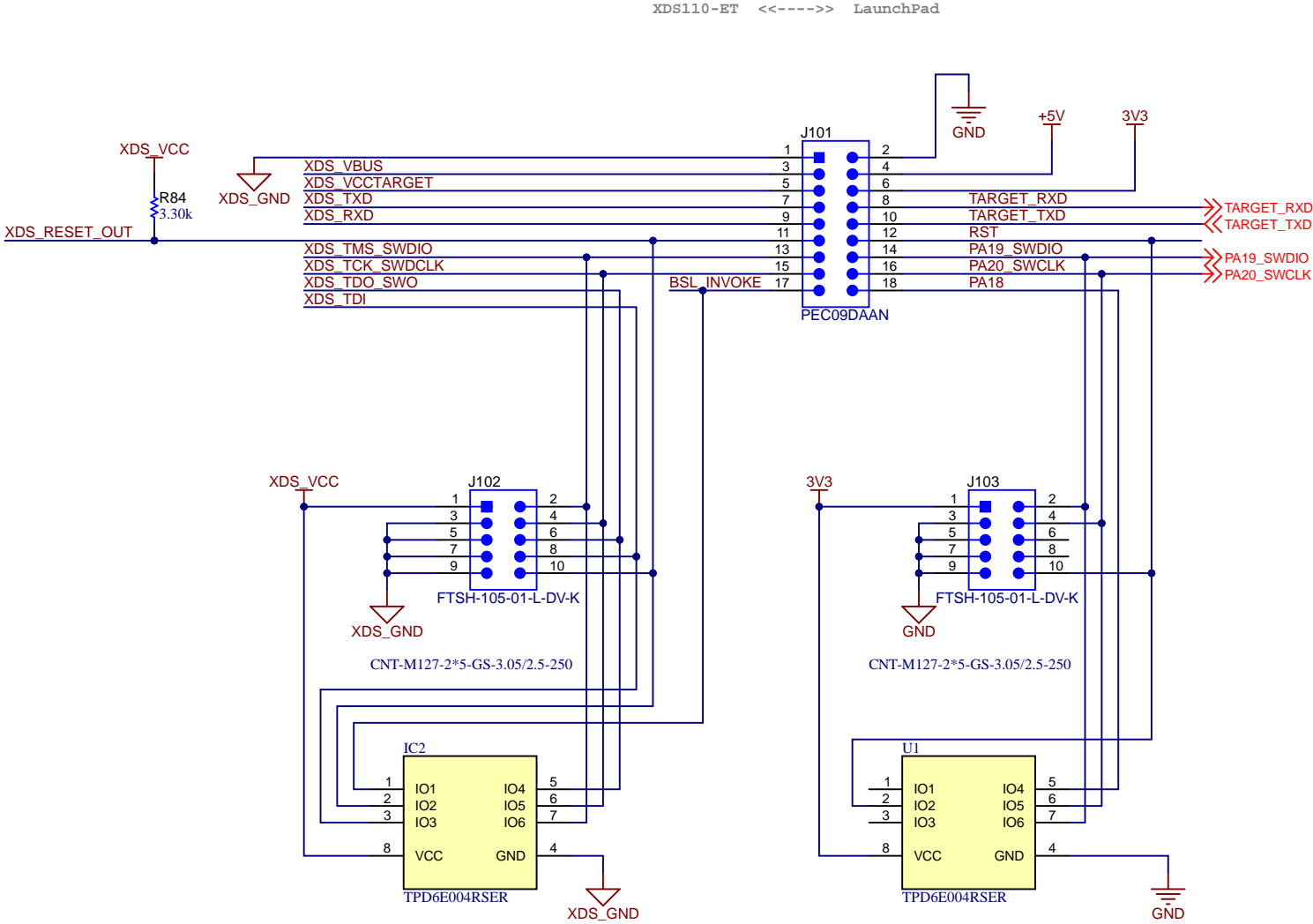
D

A

B

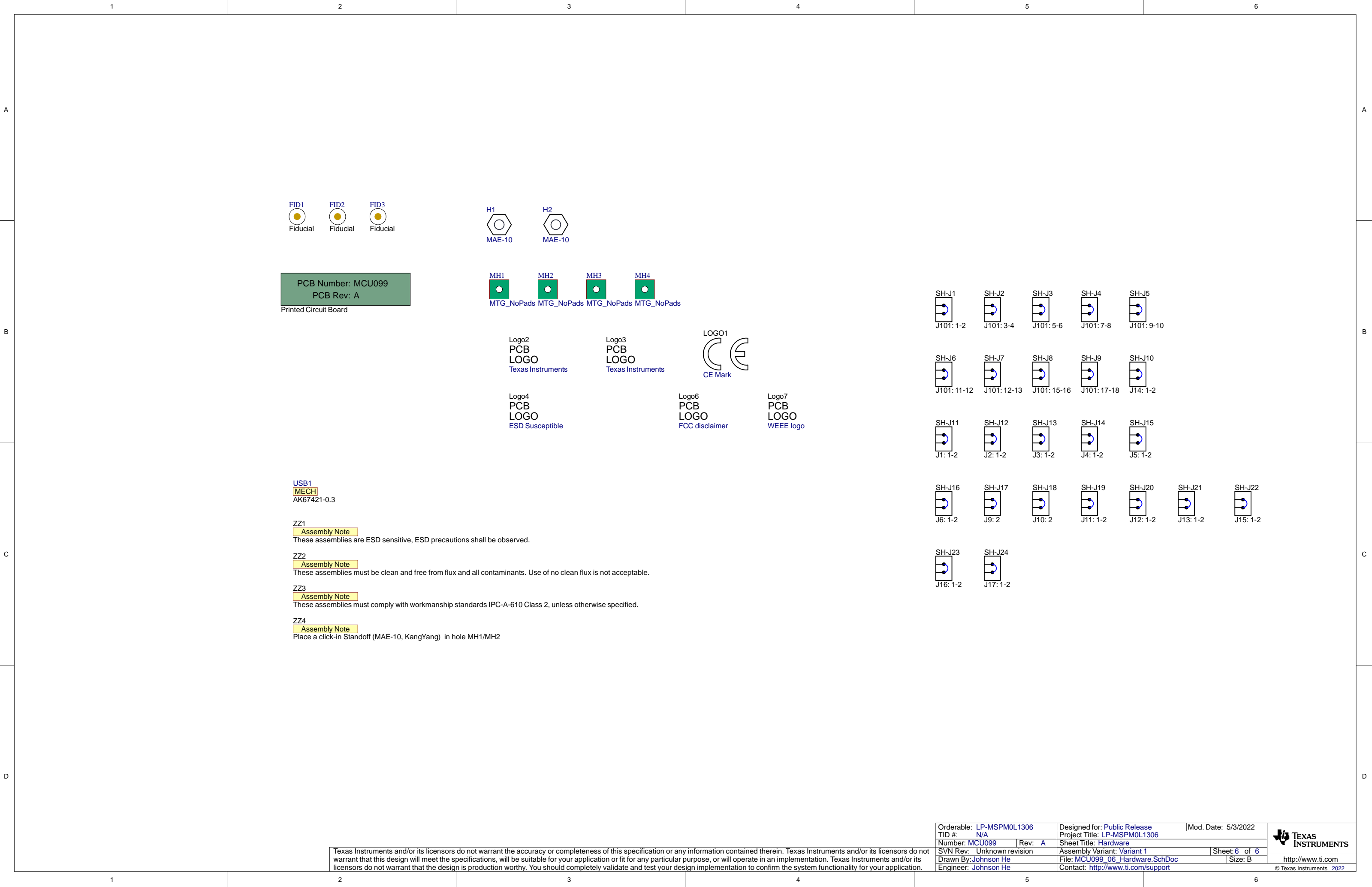
C

D



Texas Instruments and/or its licensors do not warrant the accuracy or completeness of this specification or any information contained therein. Texas Instruments and/or its licensors do not warrant that this design will meet the specifications, will be suitable for your application or fit for any particular purpose, or will operate in an implementation. Texas Instruments and/or its licensors do not warrant that the design is production worthy. You should completely validate and test your design implementation to confirm the system functionality for your application.

Orderable: LP-MSPM0L1306	Designed for: Public Release	Mod. Date: 8/17/2022
TID #: N/A	Project Title: LP-MSPM0L1306	
Number: MCU099	Rev: A	Sheet Title: XDS110-ET Interface
SVN Rev: Unknown revision	Assembly Variant: Variant 1	Sheet: 4 of 6
Drawn By: Johnson He	File: MCU099_04_XDS110_Target_Interface.SchDoc	Size: B
Engineer: Johnson He	Contact: http://www.ti.com/support	



1

2

3

4

5

6

1

2

3

4

5

6

1

2

3

4

5

6

1

2

3

4

5

6

1

2

3

4

5

6

1

2

3

4

5

6

1

2

3

4

5

6

1

2

3

4

5

6

1

2

3

4

5

6

1

2

3

4

5

6

Orderable: LP-MSPM0L1306

TID #: N/A

Number: MCU099

SVN Rev: Unknown revision

Drawn By: Johnson He

Engineer: Johnson He

Designed for: Public Release

Project Title: LP-MSPM0L1306

Sheet Title: Hardware

Assembly Variant: Variant 1

File: MCU099_06_Hardware.SchDoc

Contact: http://www.ti.com/support

Mod. Date: 5/3/2022

Sheet: 6 of 6

Size: B

TEXAS
INSTRUMENTS

http://www.ti.com

© Texas Instruments 2022

Texas Instruments and/or its licensors do not warrant the accuracy or completeness of this specification or any information contained therein. Texas Instruments and/or its licensors do not warrant that this design will meet the specifications, will be suitable for your application or fit for any particular purpose, or will operate in an implementation. Texas Instruments and/or its licensors do not warrant that the design is production worthy. You should completely validate and test your design implementation to confirm the system functionality for your application.