

GENERAL NOTES. UNLESS OTHERWISE SPECIFIED

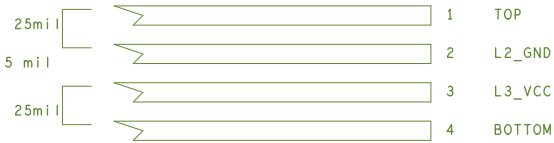
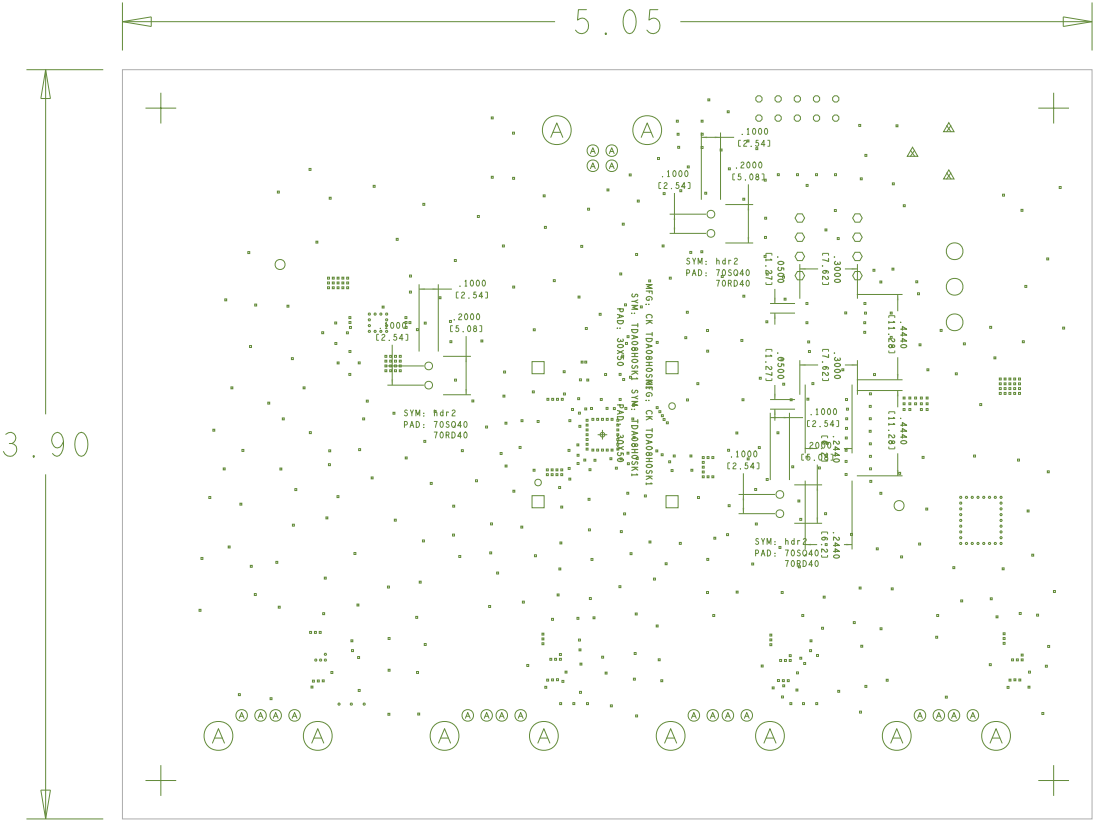
1. ALL FABRICATION ITEMS MUST MEET OR EXCEED BEST INDUSTRY PRACTICE : IPC-A-600C (Commercial std.)
2. LAMINATE MATERIAL : FR4 POLYCLAD 370 or EQUIVALENT
3. COPPER WEIGHT : 2oz START INTERNAL 1oz START EXTERNAL
4. FINISHED BOARD THICKNESS : .062 +/- .005
5. MAXIMUM WARP AND TWIST TO BE : .005 INCH PER INCH
6. MINIMUM COPPER WALL THICKNESS OF PLATED-THRU HOLES TO BE .001 INCH THERE MUST BE 1MIL OR GREATER PLATING ON EACH SIDE OF THE BARREL WHEN VIEWED IN THE CROSS SECTION
7. MINIMUM ANNULAR RING OF PLATED-THRU HOLES TO BE .002 INCH
8. MAXIMUM ALLOWABLE LINE REDUCTION TO BE 20% OR .002 WHICHEVER IS SMALLER
9. 0.009 SIGNAL LINES ON LAYER 1 TO BE IMPEDANCE CONTROLLED 90 OHMS DIFFERENTIAL +/- 10%

11. DIELECTRIC CONSTANTS ARE
- CORE : 4.1
- PREPREG : 4.1

13. A CROSS SECTION MOUNT AND DIGITAL PHOTO'S OF VIA'S TO BE PROVIDED
14. USE THE (DRPP) DUTCH REVERSE PLATING PROCESS

PROCESS NOTES

1. CIRCUITRY ON OUTER LAYERS TO BE PLATED WITH : NICKEL GOLD
2. SOLDERMASK BOTH SIDES PER ARTWORK : BLACK LPI
3. SILKSCREEN BOTH SIDES PER ARTWORK : COLOR = WHITE



DRILL CHART: TOP to BOTTOM				
ALL UNITS ARE IN MILS				
FIGURE	SIZE	TOLERANCE	PLATED	QTY
.	8.0	+0.0 / -0.0	PLATED	599
.	12.0	+3.0 / -12.0	PLATED	50
o	35.0	+3.0 / -3.0	PLATED	10
o	36.0	+0.0 / -0.0	PLATED	8
⊗	40.0	+2.0 / -2.0	PLATED	20
o	40.0	+3.0 / -3.0	PLATED	6
o	52.0	+0.0 / -0.0	PLATED	2
○	73.0	+0.0 / -0.0	PLATED	3
Ⓐ	118.0	+3.0 / -3.0	PLATED	10
△	120.0	+2.0 / -2.0	PLATED	2
△	140.0	+2.0 / -2.0	PLATED	1
+	160.0	+0.0 / -0.0	PLATED	4
o	33.4	+1.0 / -1.0	NON-PLATED	2
□	63.3	+2.0 / -2.0	NON-PLATED	4