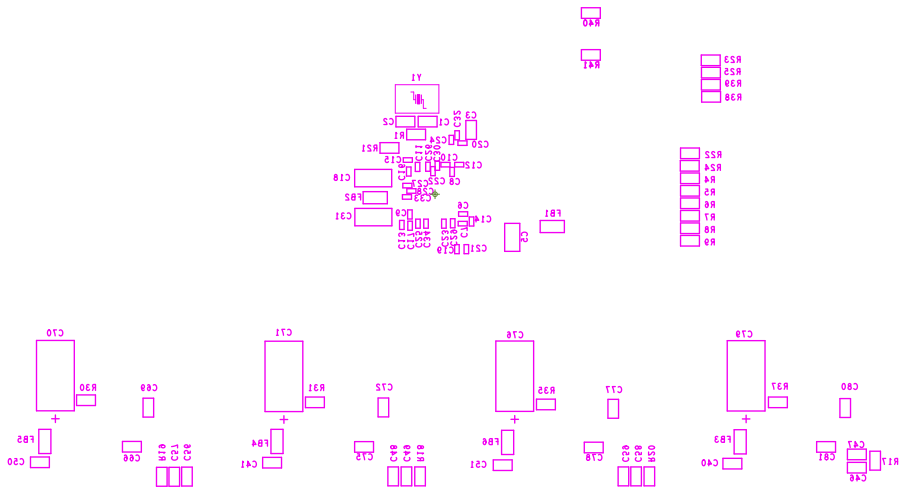
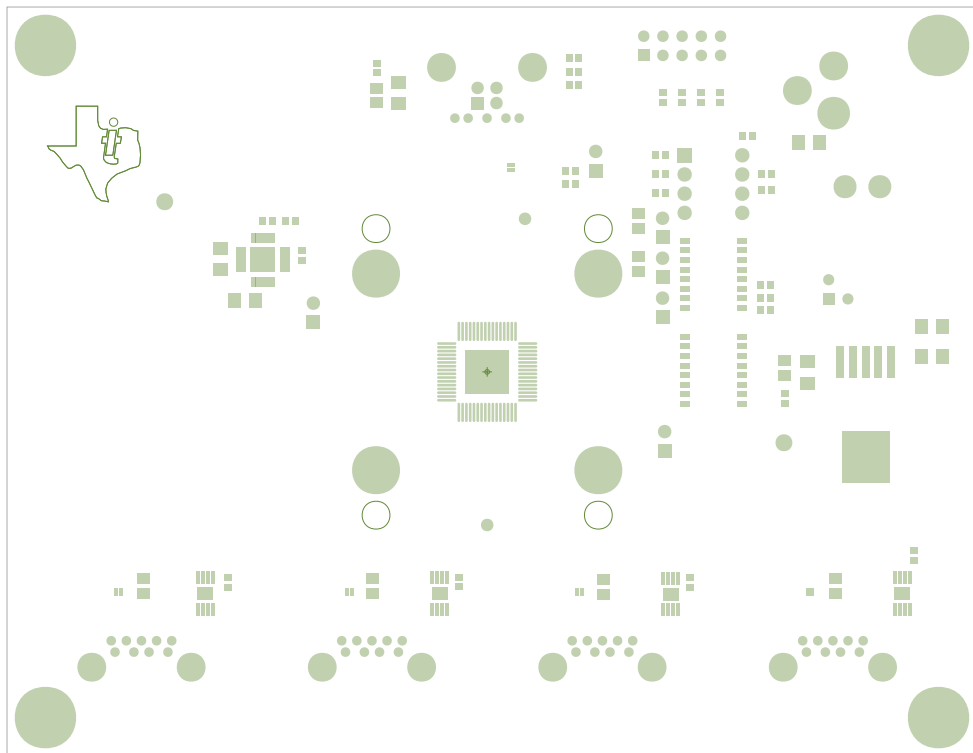
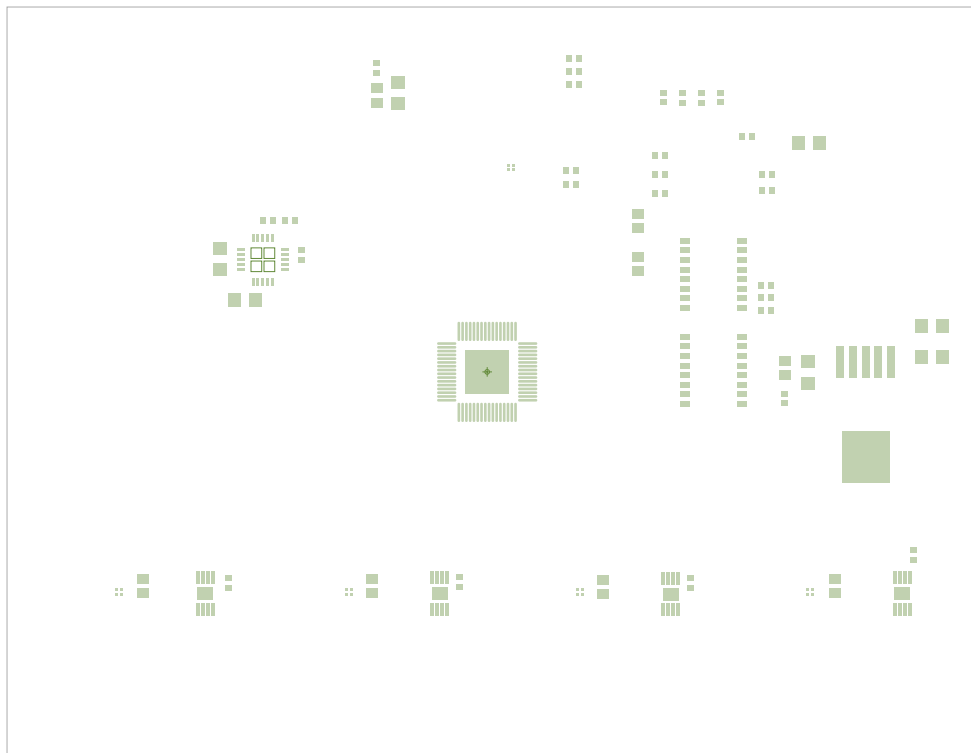
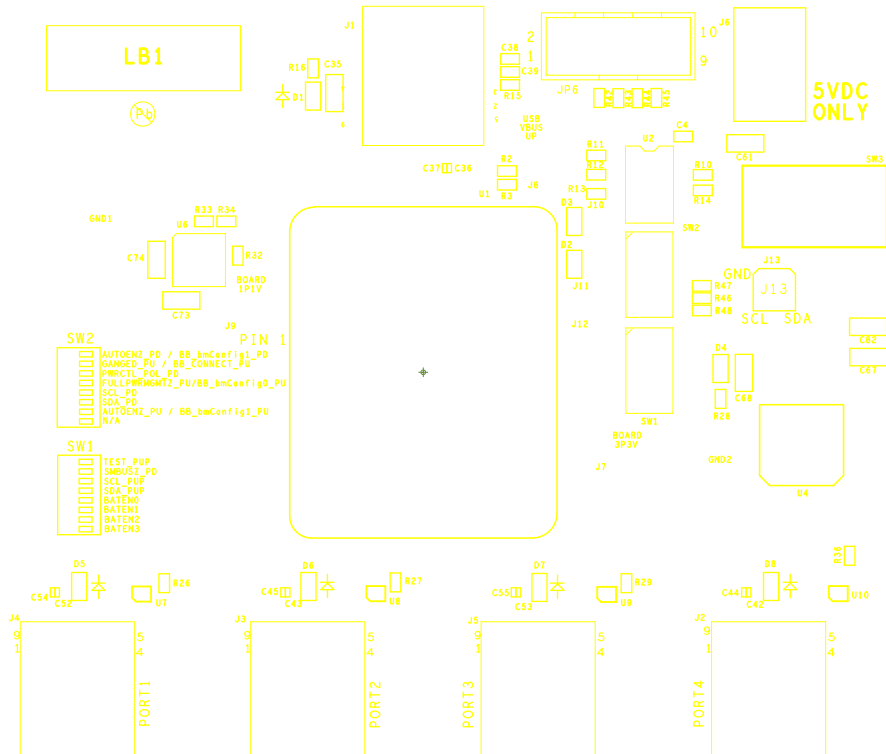


NOT FCC APPROVED FOR RESALE
: YJNO EVALUATION ONLY









GENERAL NOTES. UNLESS OTHERWISE SPECIFIED

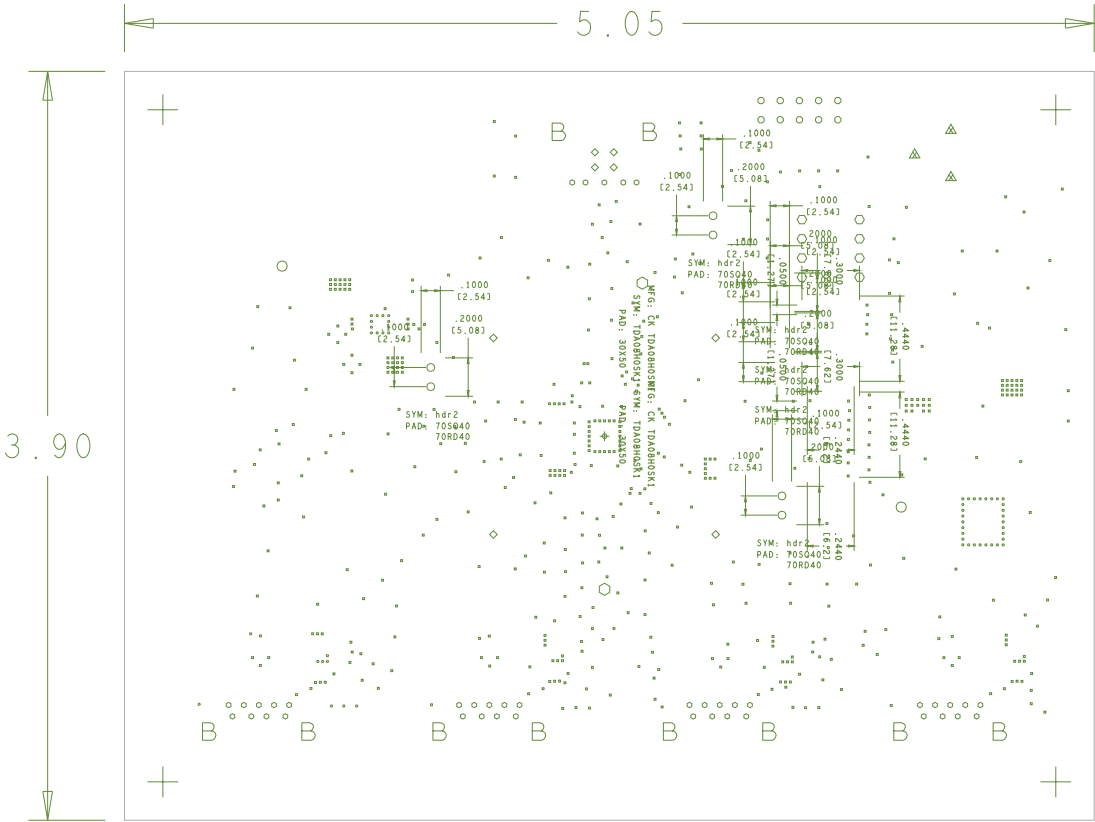
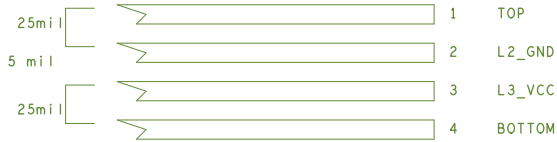
- 1. ALL FABRICATION ITEMS MUST MEET OR EXCEED BEST INDUSTRY PRACTICE : IPC-A-600C (Commercial std.)
- 2. LAMINATE MATERIAL : FR4 POLYCLAD 370 or EQUIVALENT
- 3. COPPER WEIGHT : 2oz START INTERNAL, 1oz START EXTERNAL
- 4. FINISHED BOARD THICKNESS : .062 +/- .10%
- 5. MAXIMUM WARP AND TWIST TO BE : .005 INCH PER INCH
- 6. MINIMUM COPPER WALL THICKNESS OF PLATED-THRU HOLES TO BE .001 INCH THERE MUST BE MINIOR GREATER PLATING ON EACH SIDE OF THE BARREL WHEN VIEWED IN THE CROSS SECTION
- 7. MINIMUM ANNUAL RING OF PLATED-THRU HOLES TO BE .002 INCH
- 8. MAXIMUM ALLOWABLE LINE REDUCTION TO BE 20% OR .002 WHICHEVER IS SMALLER
- 9. 0.009 SIGNAL LINES ON LAYER 1 TO BE IMPEDANCE CONTROLLED 90 OHMS DIFFERENTIAL +/- 10%

- 11. DIELECTRIC CONSTANTS ARE CORE : 4.1 PREPREG : 4.1

- 13. A CROSS SECTION MOUNT AND DIGITAL PHOTO'S OF VIA'S TO BE PROVIDED
- 14. USE THE (DRPP) DUTCH REVERSE PLATING PROCESS

PROCESS NOTES

- 1. CIRCUITRY ON OUTER LAYERS TO BE PLATED WITH : NICKEL GOLD
- 2. SOLDERMASK BOTH SIDES PER ARTWORK : BLACK LP
- 3. SILKSCREEN BOTH SIDES PER ARTWORK : COLOR = WHITE
- 4. BOARDS MUST MEET OR EXCEED UL94-V0 REQUIREMENT



DRILL CHART: TOP to BOTTOM				
ALL UNITS ARE IN MILS				
FIGURE	SIZE	TOLERANCE	PLATED	QTY
+	160.0	+3.0/-3.0	PLATED	4
△	140.0	+3.0/-3.0	PLATED	1
▲	120.0	+3.0/-3.0	PLATED	2
B	91.0	+3.0/-3.0	PLATED	10
.	65.0	+3.0/-3.0	PLATED	2
○	52.0	+3.0/-3.0	PLATED	2
◊	40.0	+3.0/-3.0	PLATED	6
◊	37.0	+3.0/-3.0	PLATED	4
◊	36.0	+3.0/-3.0	PLATED	8
◊	35.0	+3.0/-3.0	PLATED	10
◊	28.0	+3.0/-3.0	PLATED	41
.	12.0	+3.0/-12.0	PLATED	51
.	8.0	+3.0/-3.0	PLATED	531
◊	125.2	+3.0/-3.0	NON-PLATED	4
○	61.0	+3.0/-3.0	NON-PLATED	2