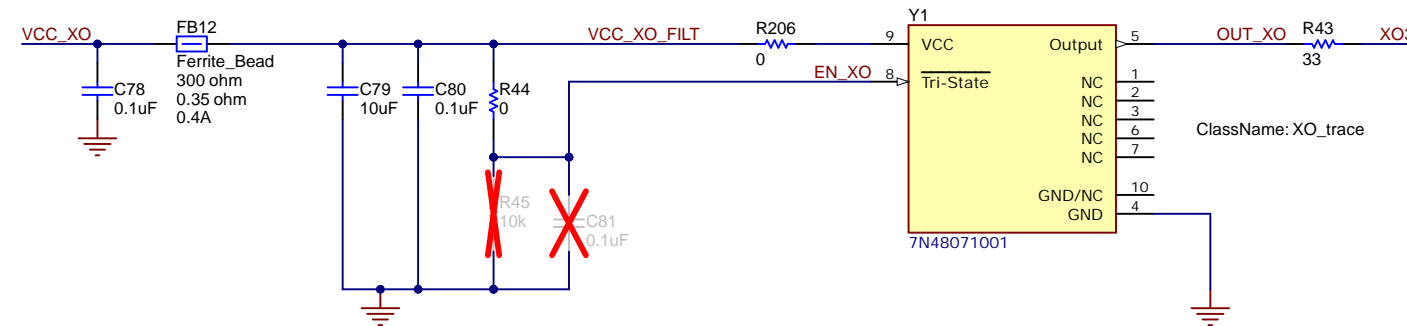


3.3V LVCMOS XO (multiple footprints)

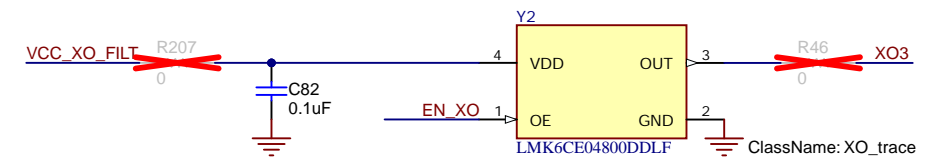
48 MHz TCXO

Connected to LMK device by default.

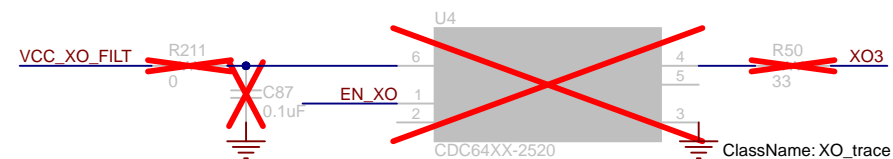
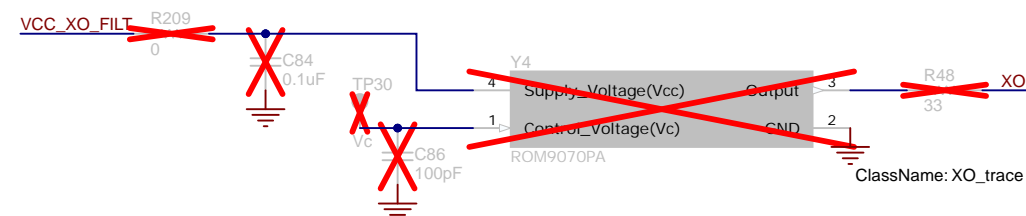
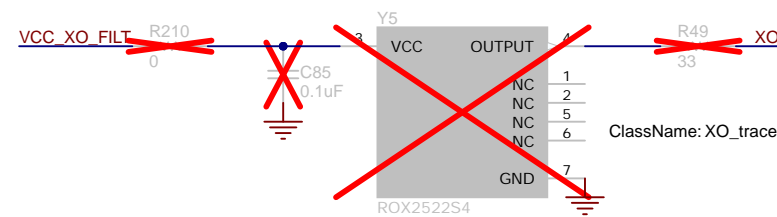
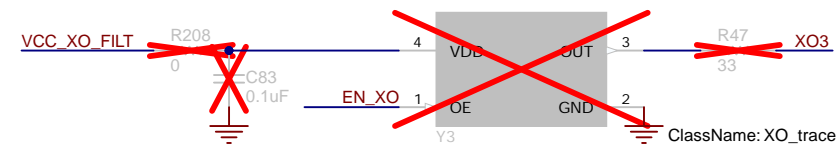


48 MHz BAW Oscillator

Not connected to LMK device by default.

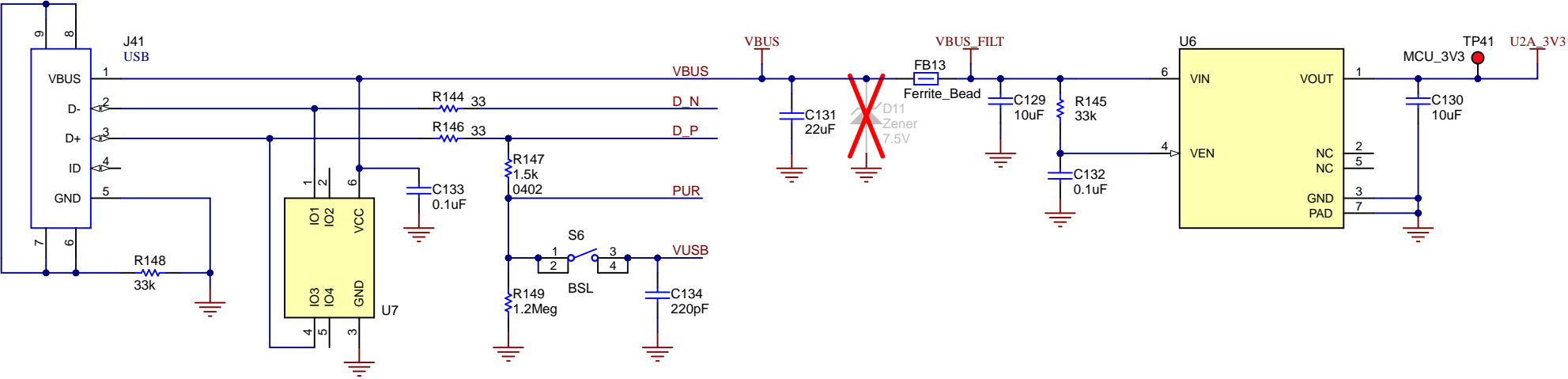


Other footprint options available (not populated):

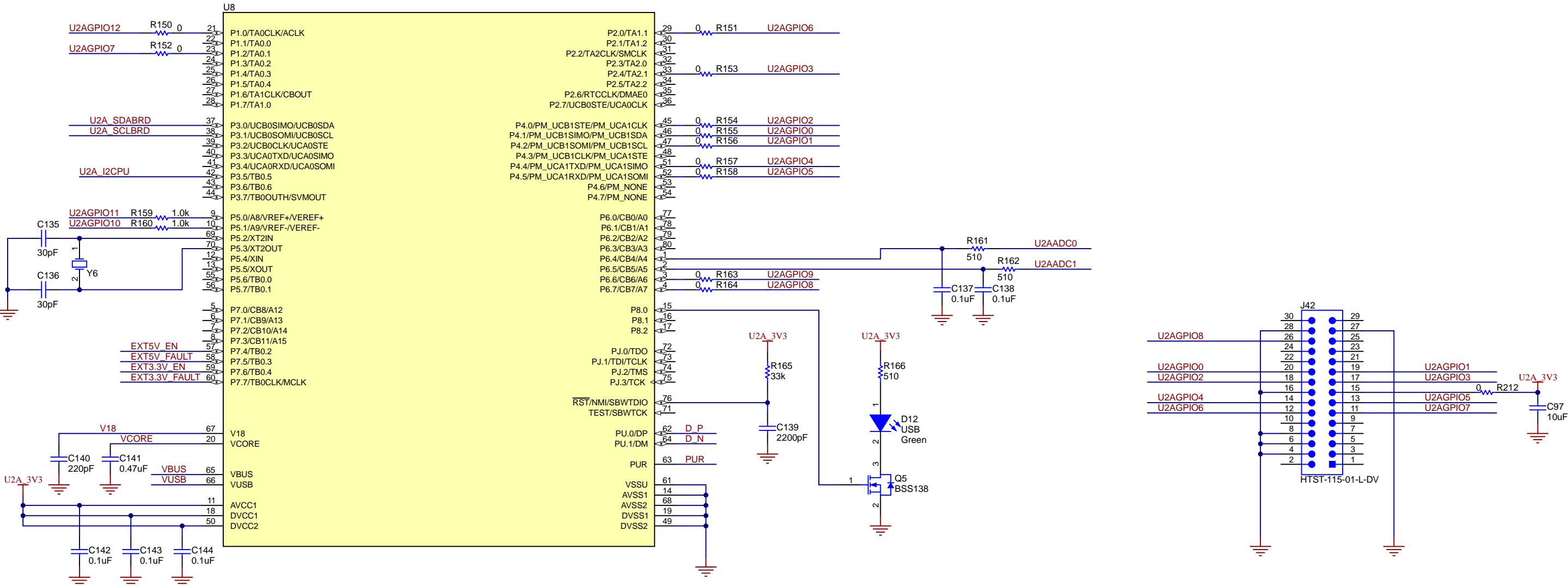


USB MINI-B CONNECTOR

3.3V, 150mA REGULATOR



MSP430 MCU -- "USB2ANY" (U2A) CONTROLLER



Texas Instruments and/or its licensors do not warrant the accuracy or completeness of this specification or any information contained therein. Texas Instruments and/or its licensors do not warrant that this design will meet the specifications, will be suitable for your application or fit for any particular purpose, or will operate in an implementation. Texas Instruments and/or its licensors do not warrant that the design is production worthy. You should completely validate and test your design implementation to confirm the system functionality for your application.

Orderable: ChangeMe in variant	Designed for: Public Release	Mod. Date: 5/9/2022
TID #: N/A	Project Title: LMK5C33414AEVM	
Number: DC216	Rev: A	Sheet Title:
SVN Rev: Not in version control	Assembly Variant: 001	Sheet: 2 of 3
Drawn By: Timothy T, Jennifer B	File: DC216A_USB2ANY.SchDoc	Size: B
Engineer: Timothy T, Jennifer B	Contact: http://www.ti.com/support	

A

B

C

D

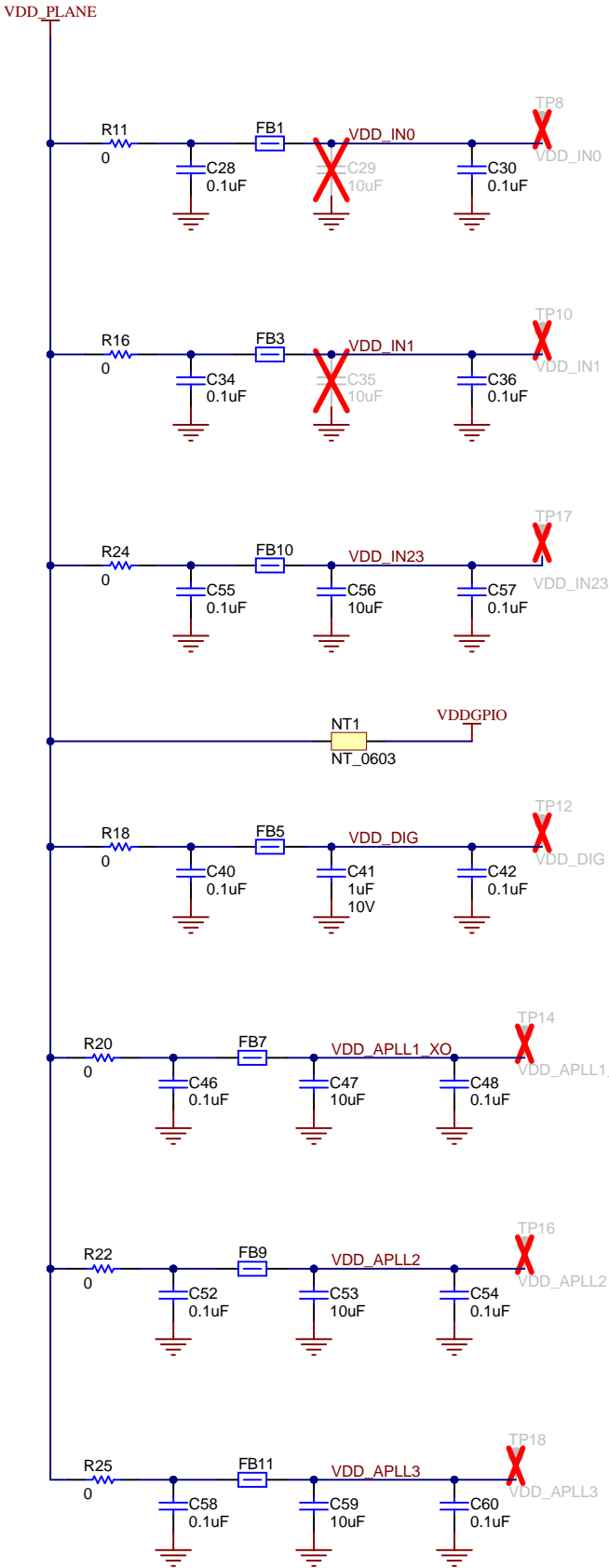
A

B

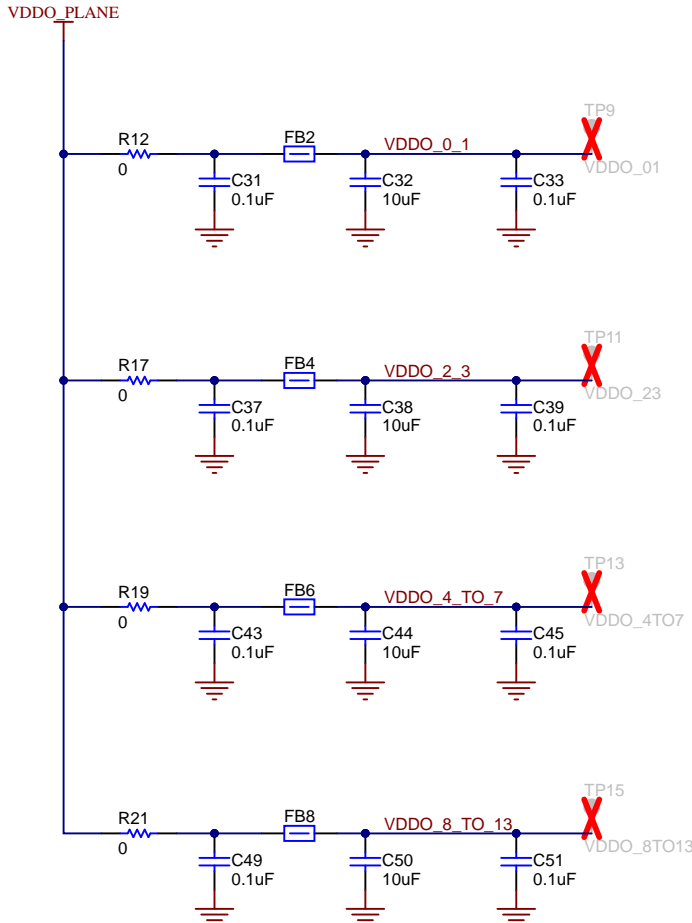
C

D

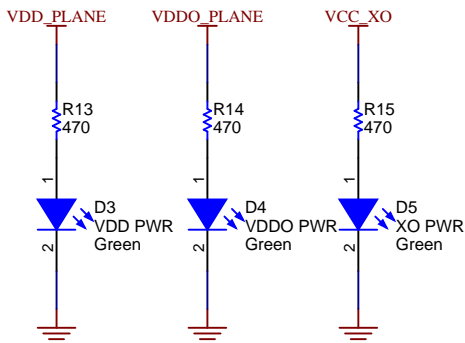
VDD CORE SUPPLY DIST & FILTERING



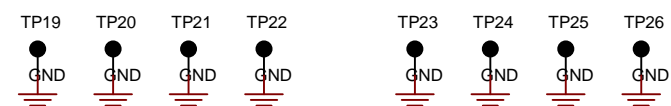
VDDO OUTPUT SUPPLY DIST & FILTERING



POWER LED INDICATORS (DUT, XO, TCXO)



GND TEST POINTS



A

B

C

D

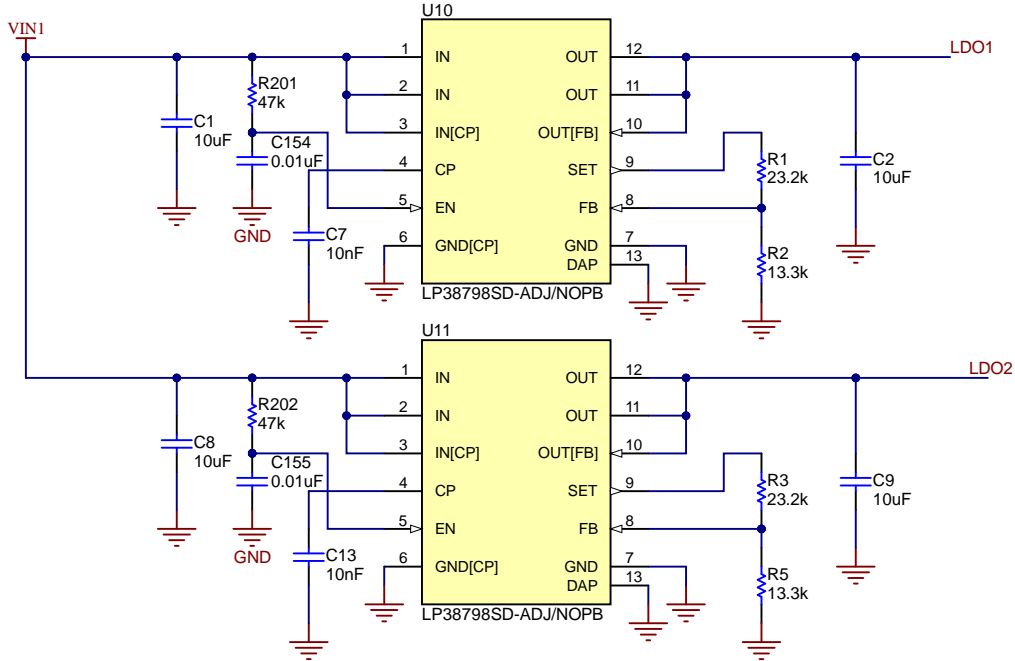
A

B

C

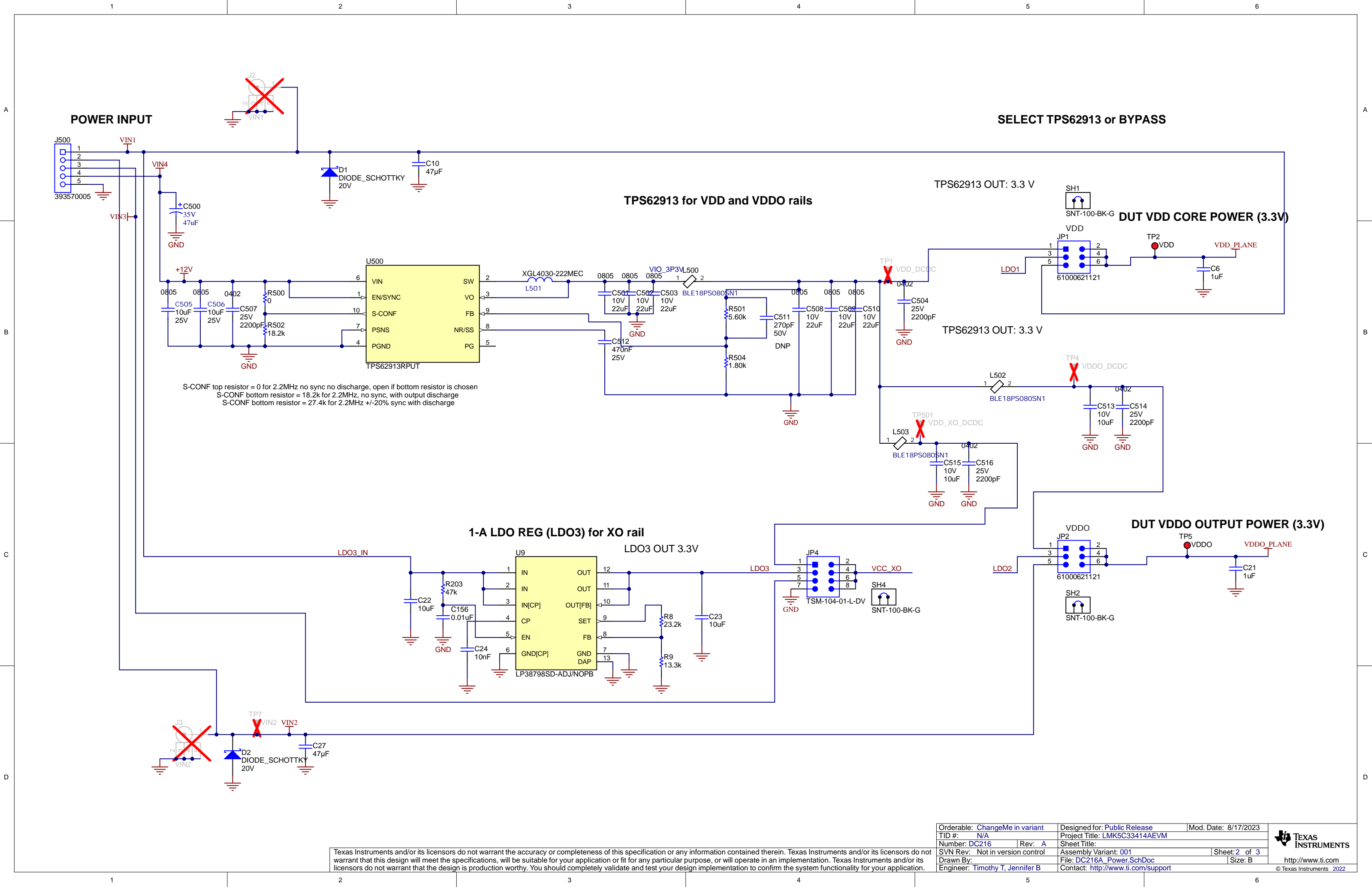
D

1-A LDO REG (LDO1, LDO2) for DUT VDD & VDDO rails



Texas Instruments and/or its licensors do not warrant the accuracy or completeness of this specification or any information contained therein. Texas Instruments and/or its licensors do not warrant that this design will meet the specifications, will be suitable for your application or fit for any particular purpose, or will operate in an implementation. Texas Instruments and/or its licensors do not warrant that the design is production worthy. You should completely validate and test your design implementation to confirm the system functionality for your application.

Orderable: ChangeMe in variant	Designed for: Public Release	Mod. Date: 4/26/2022
TID #: N/A	Project Title: LMK5C33414AEVM	
Number: DC216	Rev: A	Sheet: 2 of 3
SVN Rev: Not in version control	Assembly Variant: 001	Size: B
Drawn By: Timothy T, Jennifer B	File: DC216A_Power_Alternate.SchDoc	Contact: http://www.ti.com/support
Engineer: Timothy T, Jennifer B		

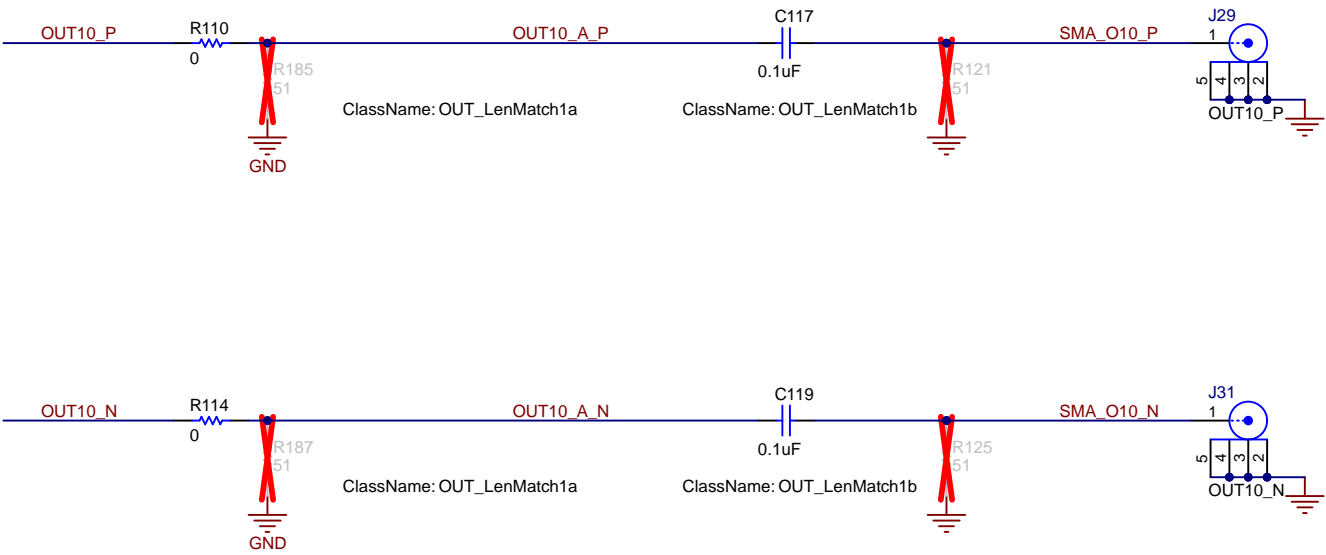


Orderable: ChangeMe in variant	Designed for: Public Release	Mod. Date: 8/17/2023
TID #: N/A	Project Title: LMK5C33414AEVM	
Number: DC216	Rev: A	Sheet Title:
SVN Rev: Not in version control	Assembly Variant: 001	Sheet: 2 of 3
Drawn By:	File: DC216A_Power.SchDoc	Size: B
Engineer: Timothy T, Jennifer B	Contact: http://www.ti.com/support	

OUT10-OUT13 CLOCK OUTPUTS

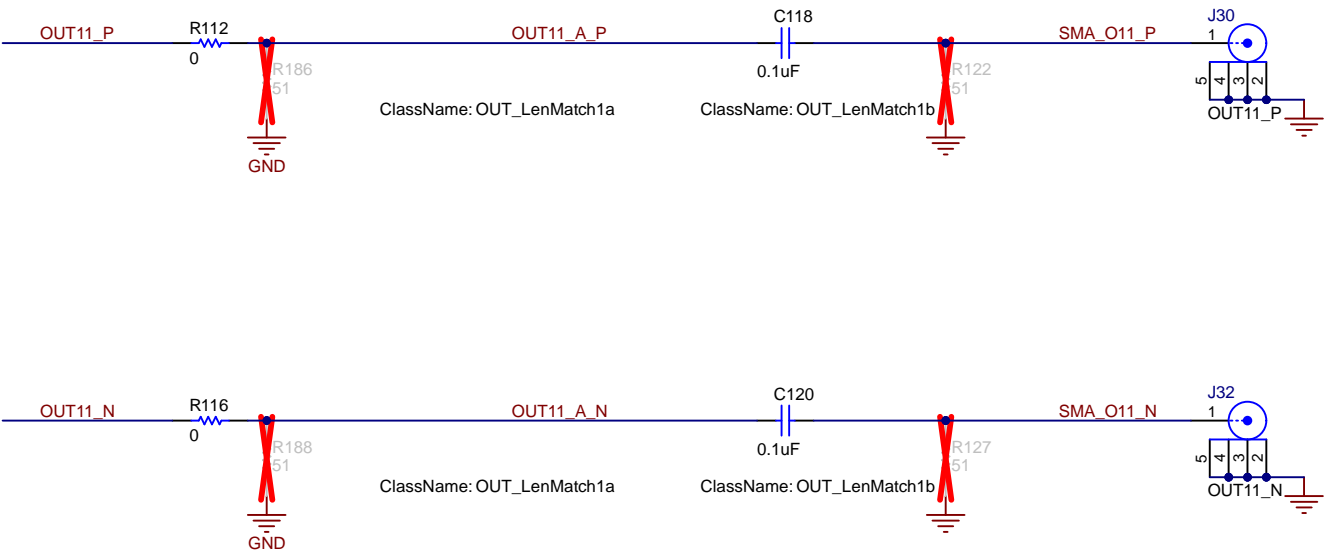
OUT10, Supported formats: LVDS, HSDS, and HCSL. Source may be VCO2 or VCO3

Default: AC-coupled (for HSDS outputs)



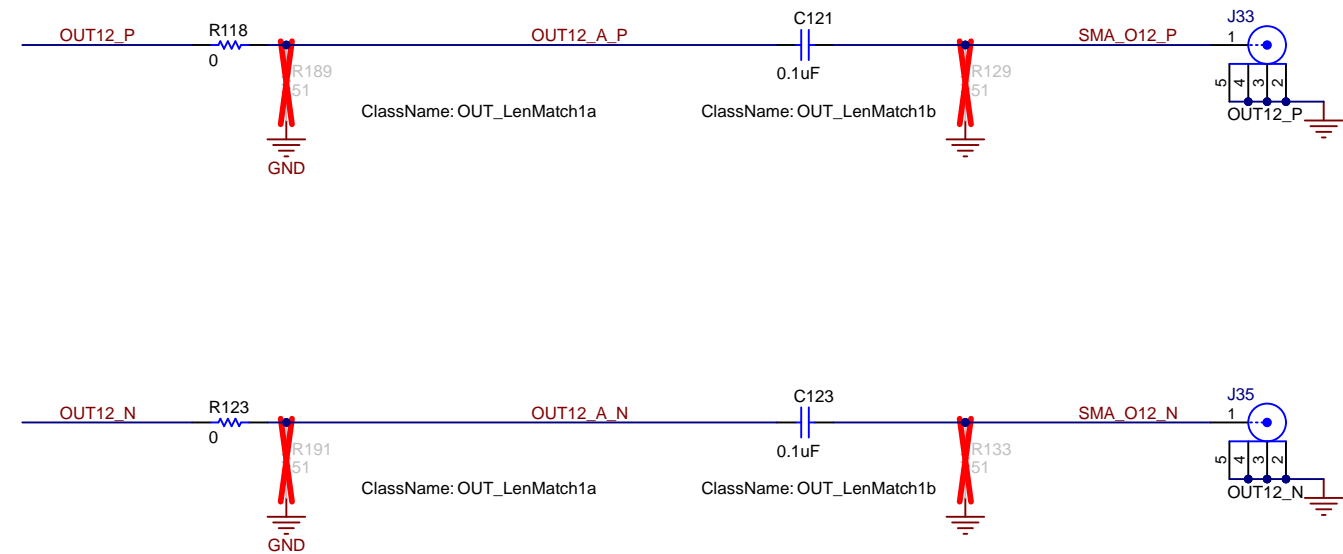
OUT11, Supported formats: LVDS, HSDS, and HCSL. Source may be VCO2 or VCO3

Default: AC-coupled (for HSDS outputs)



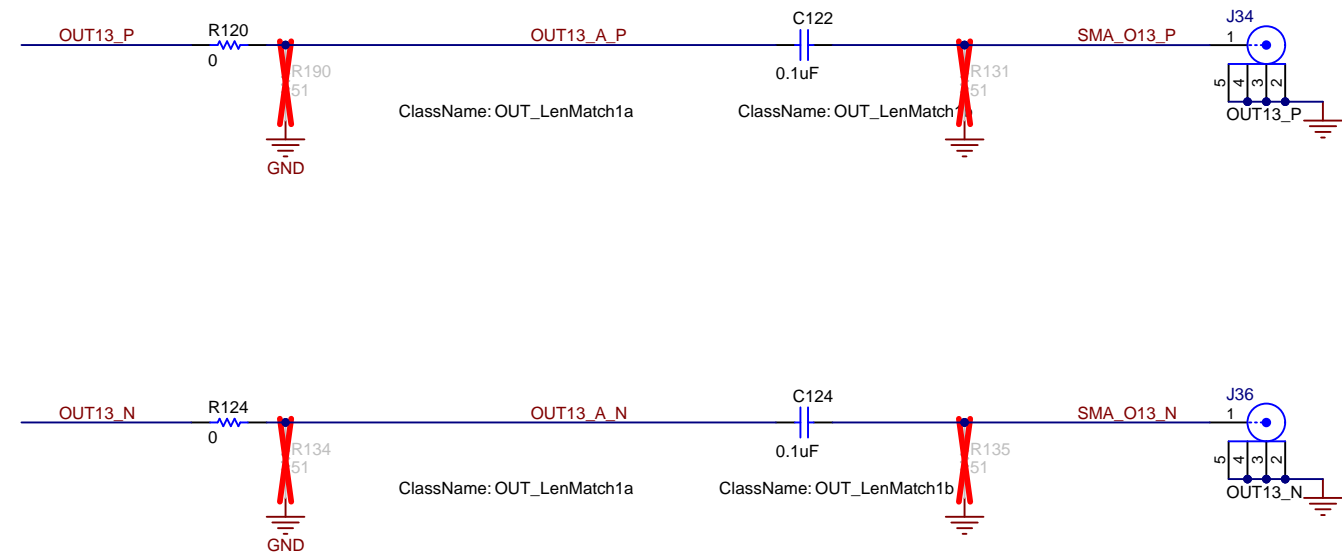
OUT12, Supported formats: LVDS, HSDS, and HCSL. Source may be VCO2 or VCO3

Default: AC-coupled (for HSDS outputs)



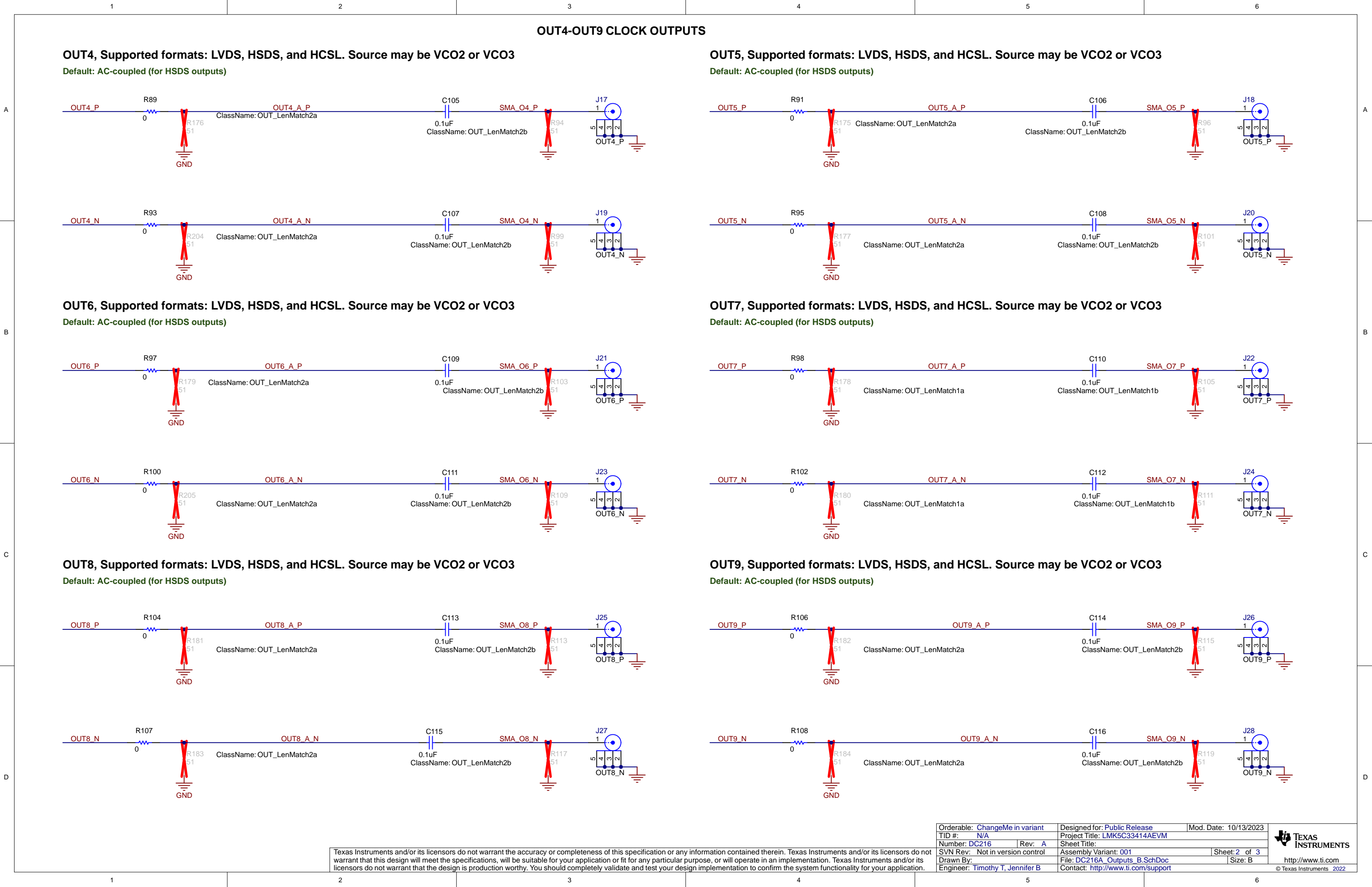
OUT13, Supported formats: LVDS, HSDS, and HCSL. Source may be VCO2 or VCO3

Default: AC-coupled (for HSDS outputs)



Texas Instruments and/or its licensors do not warrant the accuracy or completeness of this specification or any information contained therein. Texas Instruments and/or its licensors do not warrant that this design will meet the specifications, will be suitable for your application or fit for any particular purpose, or will operate in an implementation. Texas Instruments and/or its licensors do not warrant that the design is production worthy. You should completely validate and test your design implementation to confirm the system functionality for your application.

Orderable: ChangeMe in variant	Designed for: Public Release	Mod. Date: 10/13/2023
TID #: N/A	Project Title: LMK5C33414AEVM	
Number: DC216	Rev: A	Sheet Title:
SVN Rev: Not in version control	Assembly Variant: 001	Sheet: 2 of 3
Drawn By:	File: DC216A_Outputs_C.SchDoc	Size: B
Engineer: Timothy T, Jennifer B	Contact: http://www.ti.com/support	



OUT5, Supported formats: LVDS, HSDS, and HCSL. Source may be VCO2 or VCO3
Default: AC-coupled (for HSDS outputs)

OUT5_P

R91

0

R175

51

GND

OUT5_A_P

ClassName: OUT_LenMatch2a

C106

0.1uF

ClassName: OUT_LenMatch2b

R96

51

GND

J18

1

OUT5_P

OUT5_N

R95

0

R177

51

GND

OUT5_A_N

ClassName: OUT_LenMatch2a

C108

0.1uF

ClassName: OUT_LenMatch2b

R101

51

GND

J20

1

OUT5_N

OUT7, Supported formats: LVDS, HSDS, and HCSL. Source may be VCO2 or VCO3
Default: AC-coupled (for HSDS outputs)

OUT7_P

R98

0

R178

51

GND

OUT7_A_P

ClassName: OUT_LenMatch1a

C110

0.1uF

ClassName: OUT_LenMatch1b

R105

51

GND

J22

1

OUT7_P

OUT7_N

R102

0

R180

51

GND

OUT7_A_N

ClassName: OUT_LenMatch1a

C112

0.1uF

ClassName: OUT_LenMatch1b

R111

51

GND

J24

1

OUT7_N

OUT9, Supported formats: LVDS, HSDS, and HCSL. Source may be VCO2 or VCO3
Default: AC-coupled (for HSDS outputs)

OUT9_P

R106

0

R182

51

GND

OUT9_A_P

ClassName: OUT_LenMatch2a

C114

0.1uF

ClassName: OUT_LenMatch2b

R115

51

GND

J26

1

OUT9_P

OUT9_N

R108

0

R184

51

GND

OUT9_A_N

ClassName: OUT_LenMatch2a

C116

0.1uF

ClassName: OUT_LenMatch2b

R119

51

GND

J28

1

OUT9_N

Texas Instruments and/or its licensors do not warrant the accuracy or completeness of this specification or any information contained therein. Texas Instruments and/or its licensors do not warrant that this design will meet the specifications, will be suitable for your application or fit for any particular purpose, or will operate in an implementation. Texas Instruments and/or its licensors do not warrant that the design is production worthy. You should completely validate and test your design implementation to confirm the system functionality for your application.

Orderable: [ChangeMe in variant](#)

TID #: [N/A](#)

Number: [DC216](#)

SVN Rev: [Not in version control](#)

Drawn By: [Timothy T, Jennifer B](#)

Engineer: [Timothy T, Jennifer B](#)

Designed for: [Public Release](#)

Project Title: [LMK5C33414AEVM](#)

Assembly Variant: [001](#)

File: [DC216A_Outputs_B.SchDoc](#)

Contact: [http://www.ti.com/support](#)

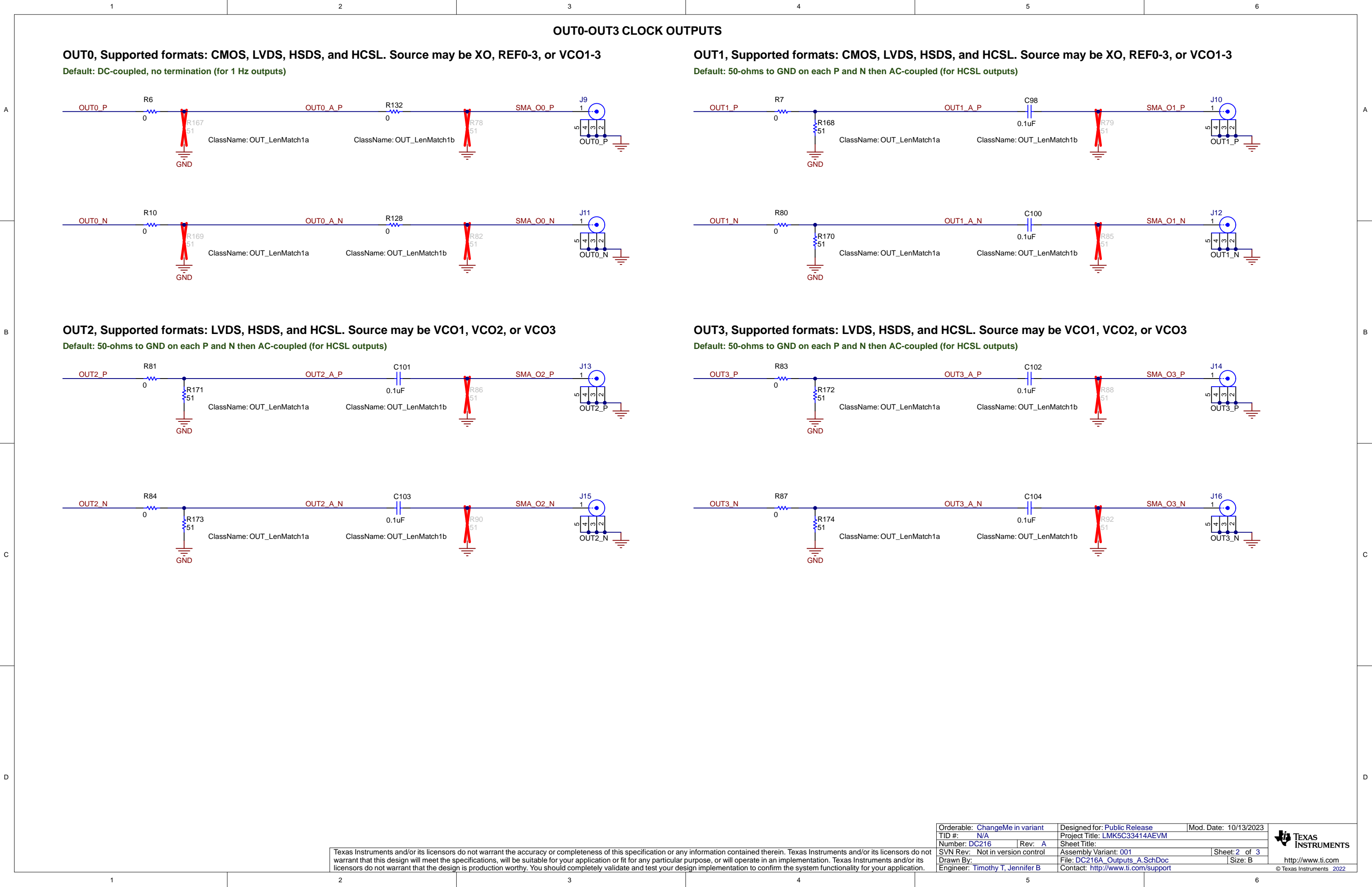
Mod. Date: [10/13/2023](#)

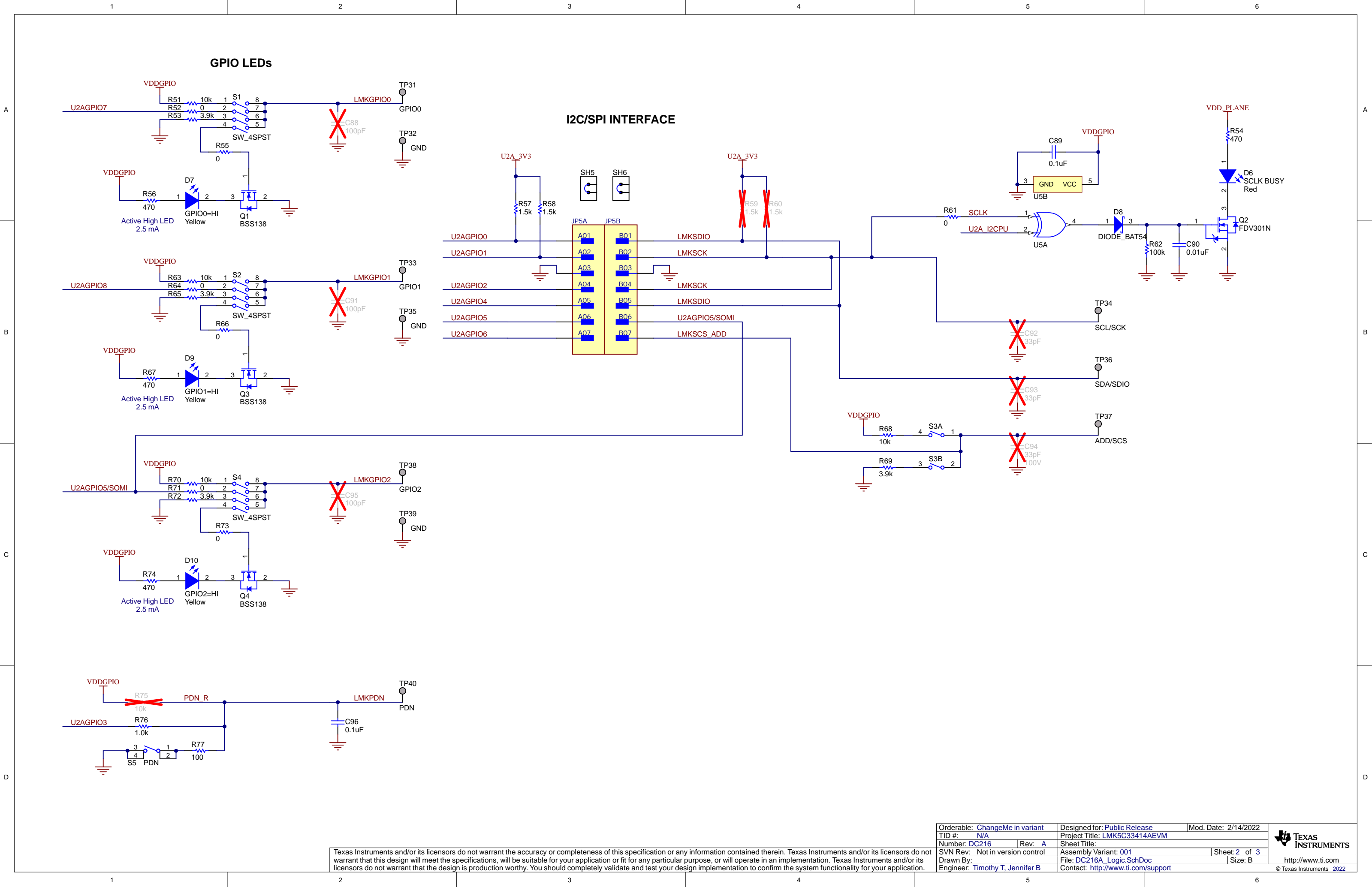
Sheet: [2](#) of [3](#)

Size: [B](#)

TEXAS
INSTRUMENTS

<http://www.ti.com>
© Texas Instruments 2022

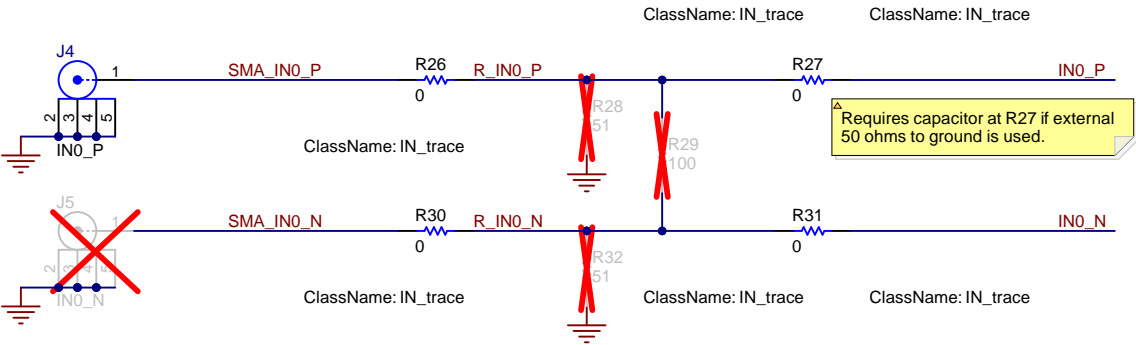




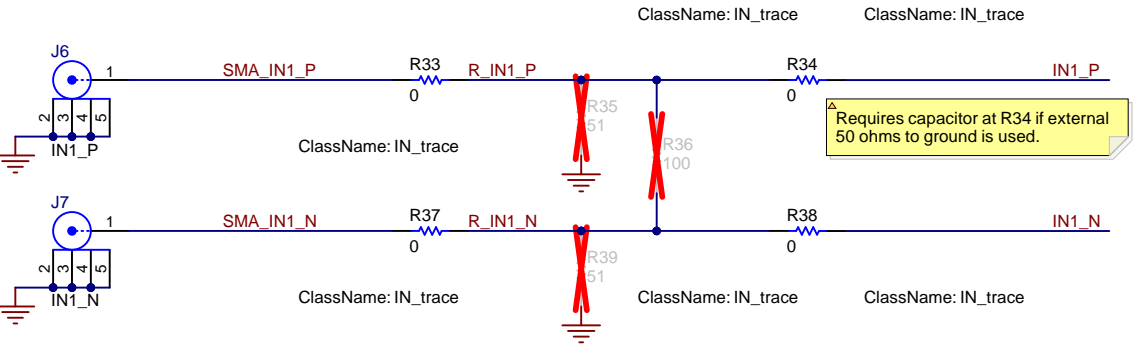
Texas Instruments and/or its licensors do not warrant the accuracy or completeness of this specification or any information contained therein. Texas Instruments and/or its licensors do not warrant that this design will meet the specifications, will be suitable for your application or fit for any particular purpose, or will operate in an implementation. Texas Instruments and/or its licensors do not warrant that the design is production worthy. You should completely validate and test your design implementation to confirm the system functionality for your application.

Orderable: ChangeMe in variant	Designed for: Public Release	Mod. Date: 2/14/2022
TID #: N/A	Project Title: LMK5C33414AEVM	
Number: DC216	Rev: A	Sheet Title:
SVN Rev: Not in version control	Assembly Variant: 001	Sheet: 2 of 3
Drawn By:	File: DC216A_Logic.SchDoc	Size: B
Engineer: Timothy T, Jennifer B	Contact: http://www.ti.com/support	

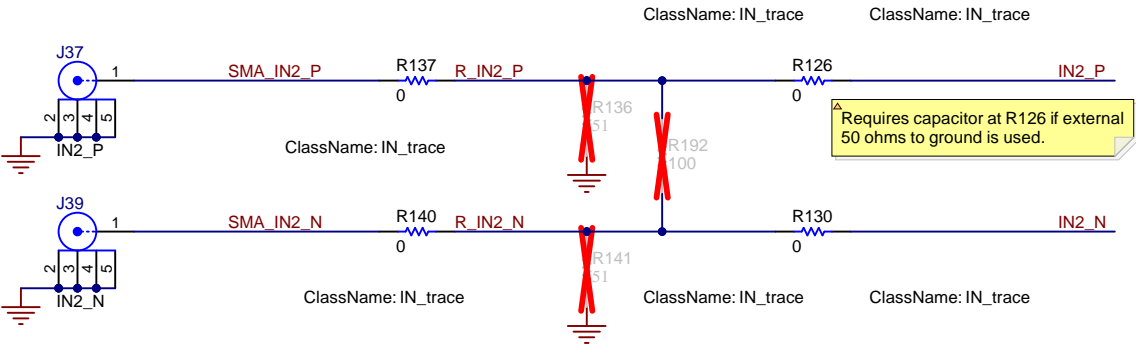
DPLL INPUT 0



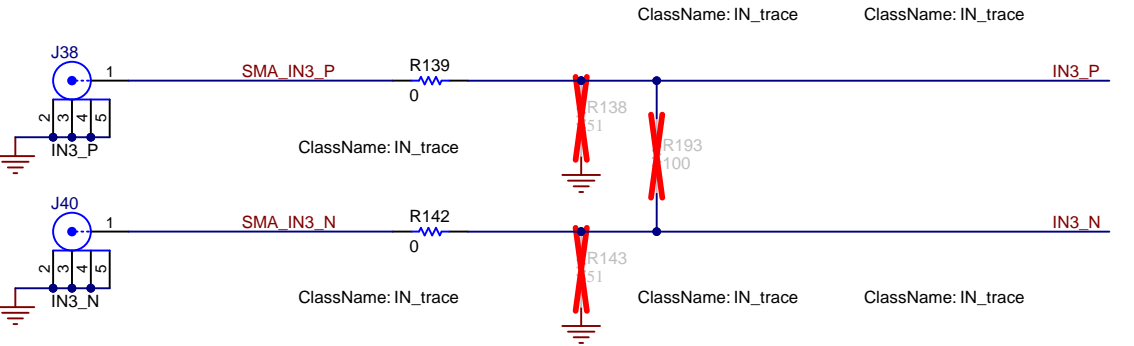
DPLL INPUT 1



DPLL INPUT 2



DPLL INPUT 3



A

B

C

D

A

B

C

D

