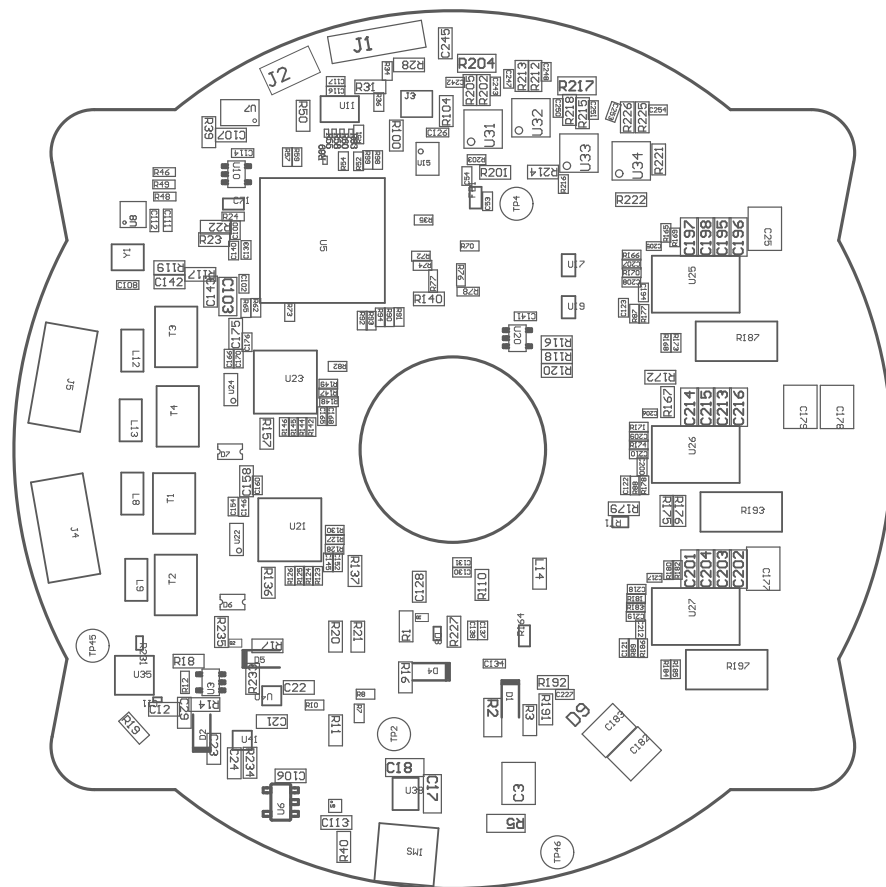


ZZ2 ■ These assemblies are ESD sensitive, ESD precautions shall be observed.

ZZ3 ■ These assemblies must be clean and free from flux and all contaminants. Use of no clean flux is not acceptable.

ZZ4 ■ These assemblies must comply with workmanship standards IPC-A-610 Class 2, unless otherwise specified.

ZZ1 ■ Install label in silkscreened box after final wash. Text shall be 8 pt font. Text shall be per the Label Table in the PDF schematic.

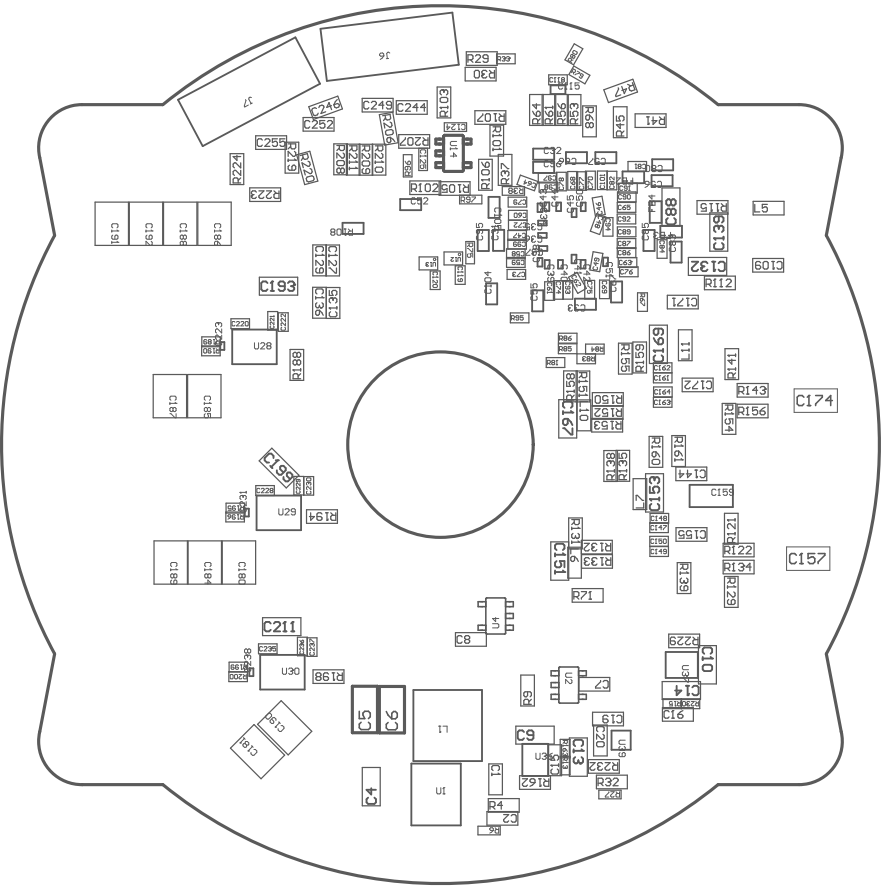


COMPONENTS MARKED 'DNP' SHOULD NOT BE POPULATED.

ASSEMBLY VARIANT:

001

PCB VIEWED FROM TOP SIDE	BOARD #:	TIDA-010979	REV:	E2	SUN REV:	Not in version control
	TID #:	TIDA-010979				
PLOT NAME = Top Assembly Drawing	GENERATED :	3/18/2026	3:48:55 PM	TEXAS INSTRUMENTS		



COMPONENTS MARKED 'DNP' SHOULD NOT BE POPULATED.

ASSEMBLY VARIANT: 001

PCB VIEWED FROM BOTTOM SIDE	BOARD #: TIDA-010979	REV: E2	SUN REV: Not in version control
	TID #: TIDA-010979		
PLOT NAME = Bottom Assembly Drawing	GENERATED : 3/18/2026	3:48:56 PM	TEXAS INSTRUMENTS