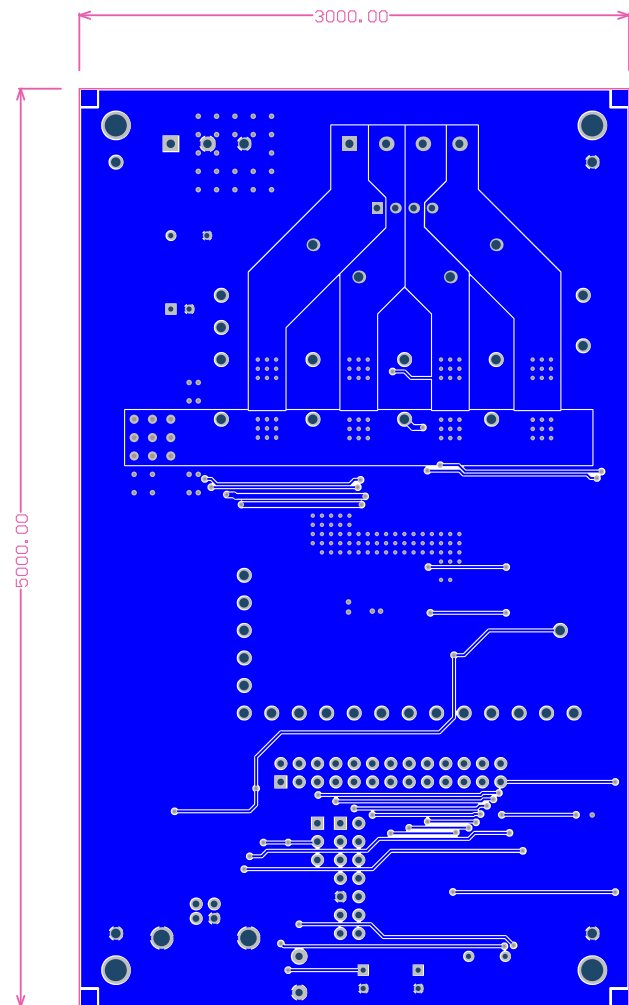
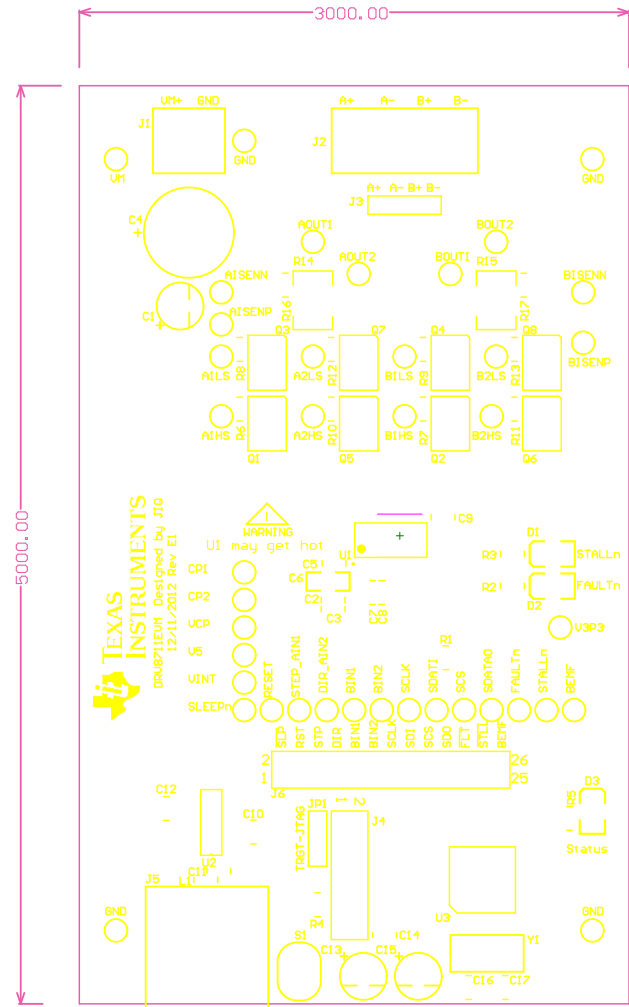
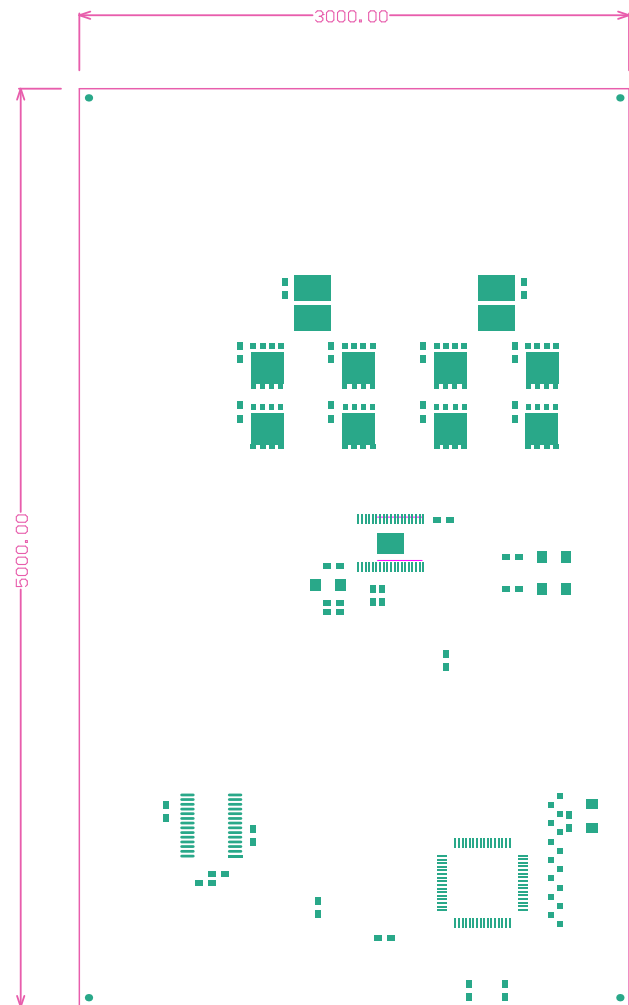


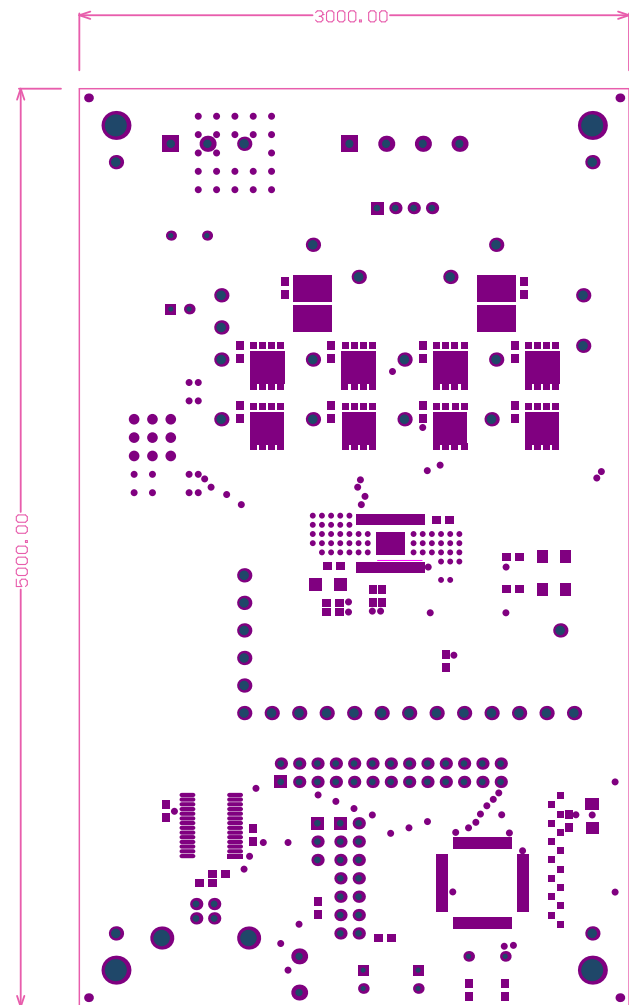
Top Layer

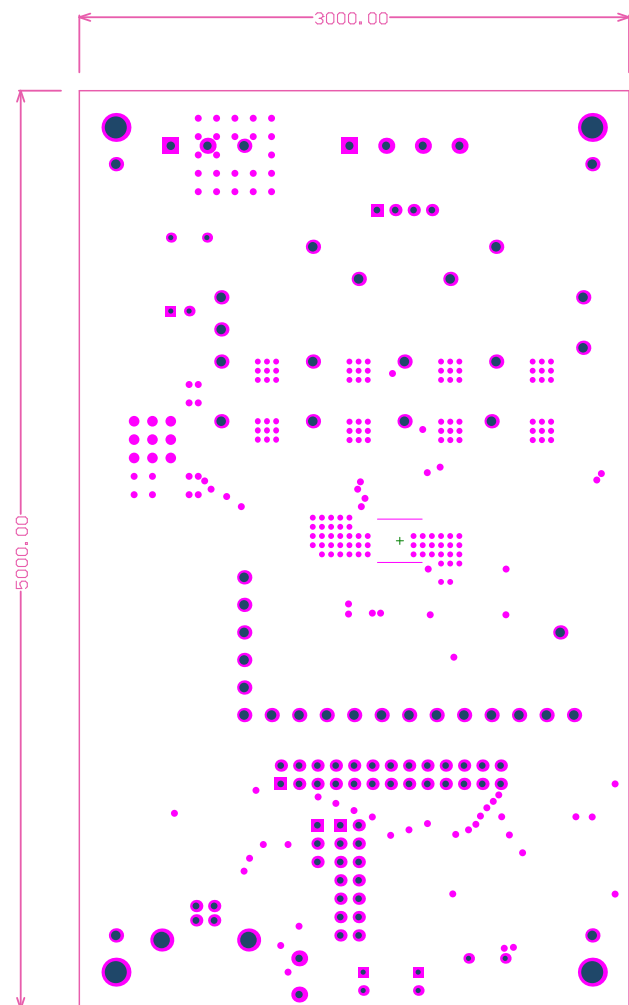


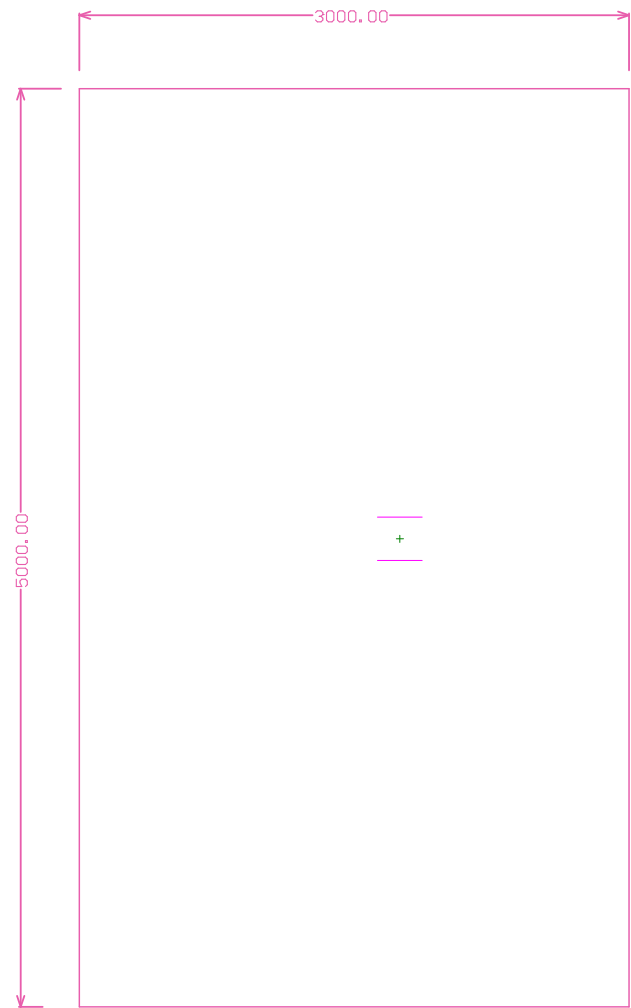
BottomLayer

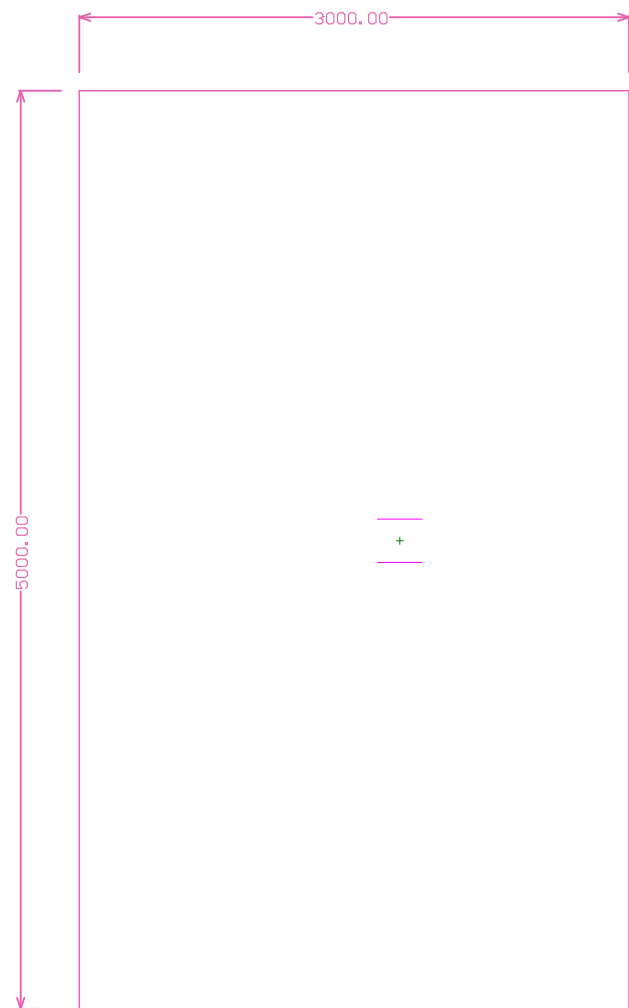


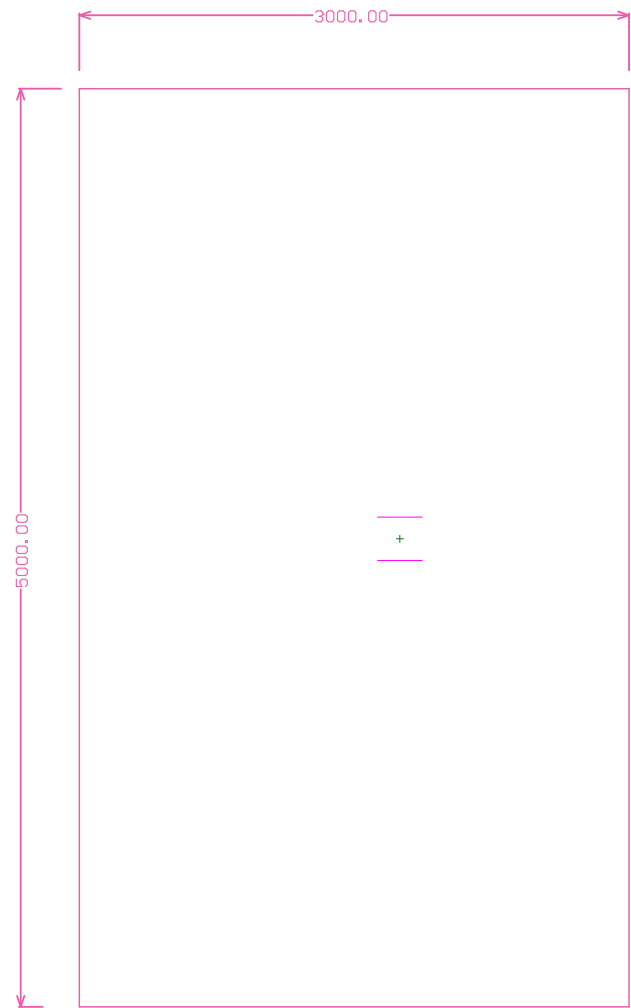


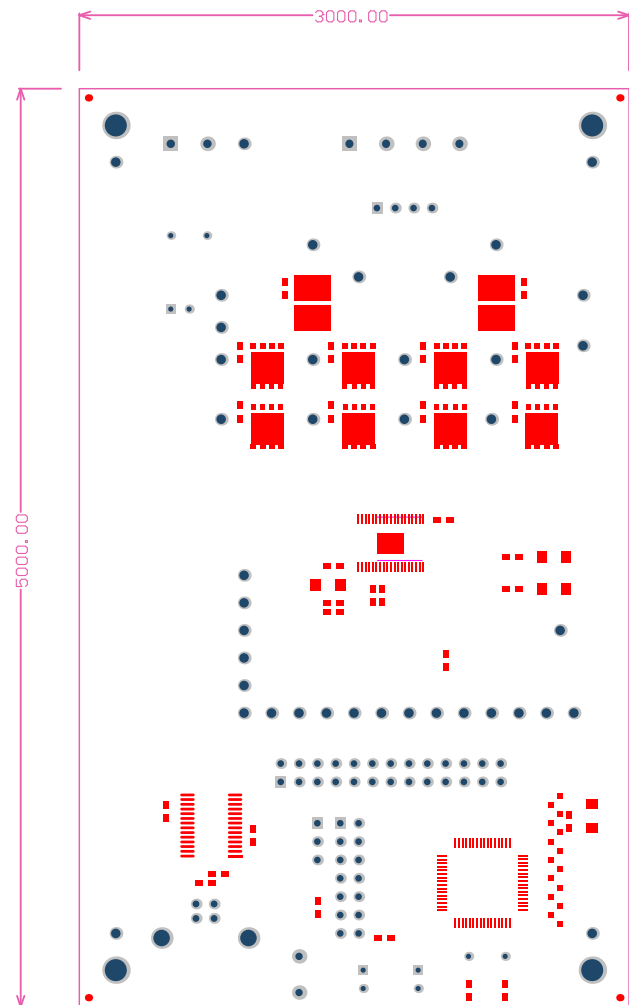


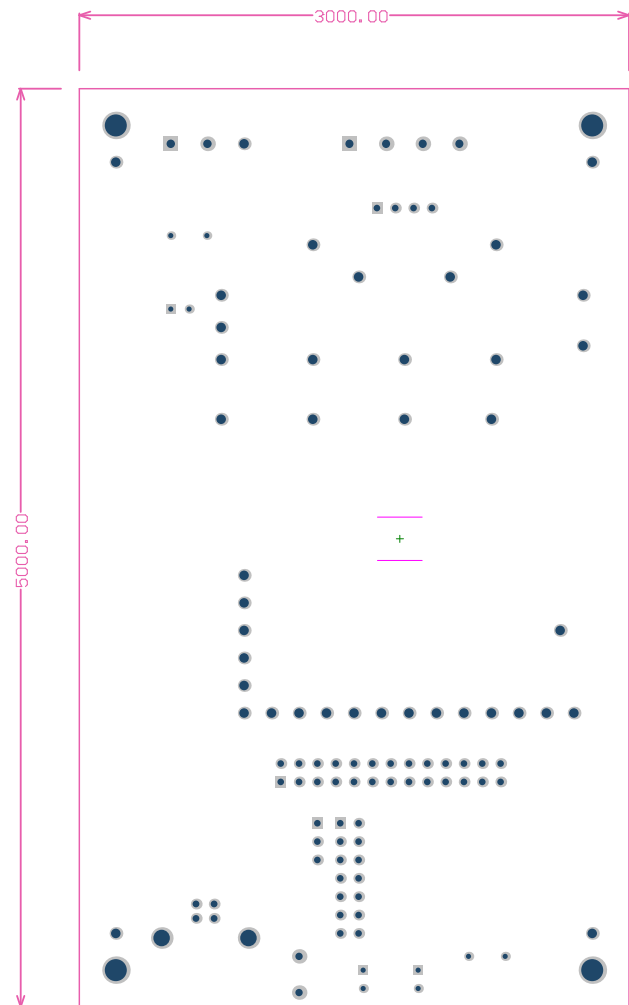


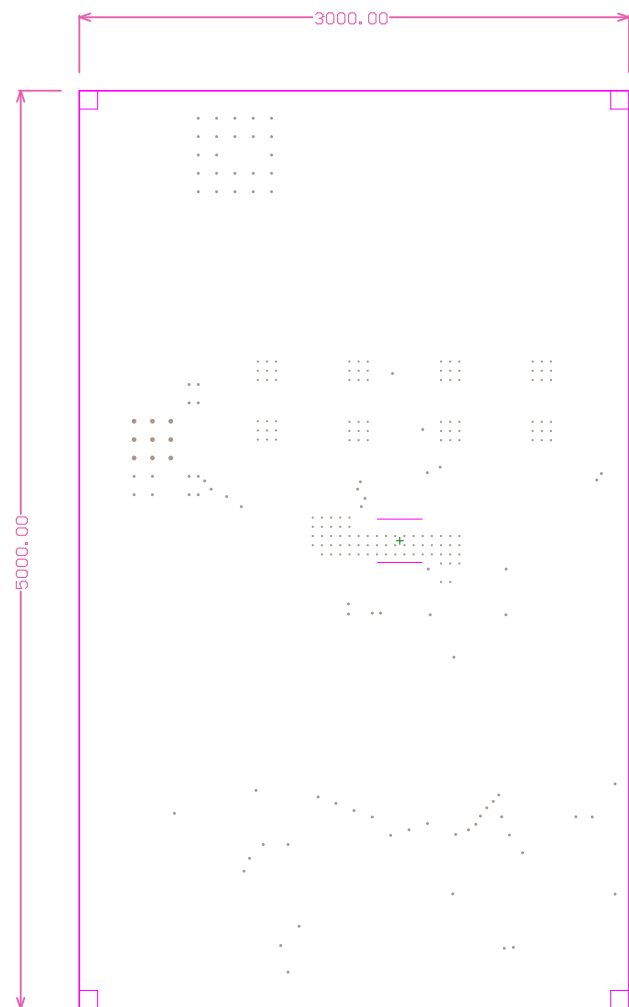


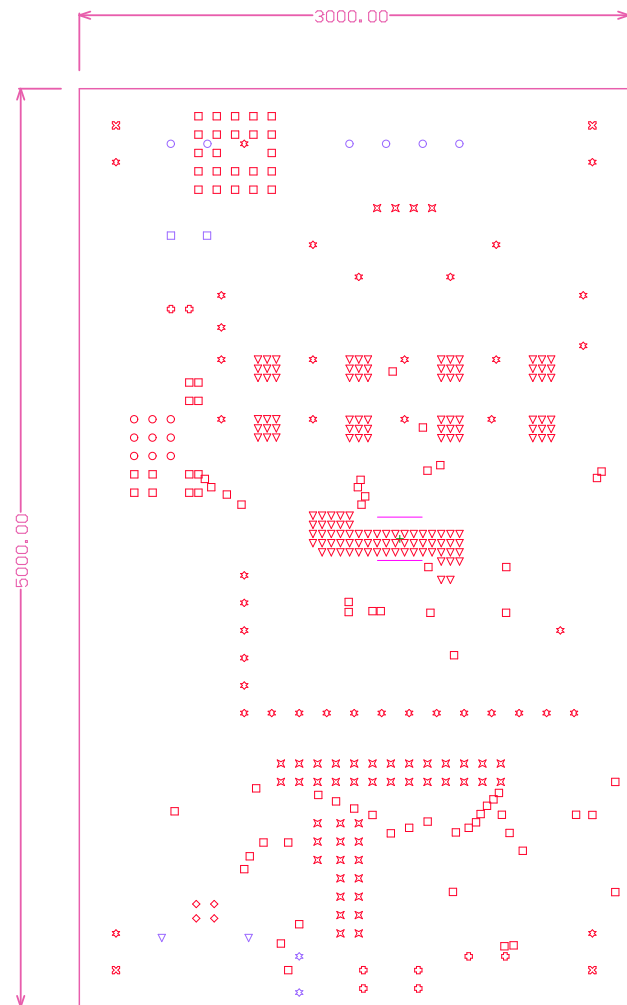












- Notes:
1. NUMBER OF FINISHED LAYERS: 2
 2. BOARD MATERIAL AND CONSTRUCTION TO BE UL
APPROVED AND MARKED ON THE FINISHED BOARD.
 3. LAMINATE MATERIAL: COPPER-CLAD FR-4
 4. COPPER WEIGHT: 2oz FINISHED
 5. FINISHED THICKNESS: .062 +/- .010
 6. MIN PLATING THICKNESS IN THROUGH HOLES: .001"
 7. ENIG Finish
 8. LPI SOLDERMASK BOTH SIDES USING APPROPRIATE
LAYER ARTWORK: COLOR = GREEN
 9. LPI SILKSCREEN AS REQUIRED: COLOR - WHITE
 10. VENDOR INFORMATION TO BE INCORPORATED
ON BACK SIDE WHENEVER POSSIBLE
 11. MINIMUM COPPER CONDUCTOR WIDTH IS: 8 MILS
 12. MINIMUM CONDUCTOR SPACING IS: 8 MILS

Symbol	Hit Count	Tool Size	Plated	Hole Type
v	137	12mil (0.305mm)	PTH	Round
□	91	16mil (0.406mm)	PTH	Round
○	9	25mil (0.635mm)	PTH	Round
□	2	27.559mil (0.7mm)	PTH	Round
⊙	8	28mil (0.711mm)	PTH	Round
x	47	35.433mil (0.9mm)	PTH	Round
⊙	4	36.614mil (0.93mm)	PTH	Round
⊙	2	39.37mil (1mm)	PTH	Round
○	6	45mil (1.143mm)	PTH	Round
⊙	40	52mil (1.321mm)	PTH	Round
v	2	90.551mil (2.3mm)	PTH	Round
⊙	4	120mil (3.048mm)	PTH	Round
352 Total				

Drill Drawing.

