

- ZZ1

ZZ2

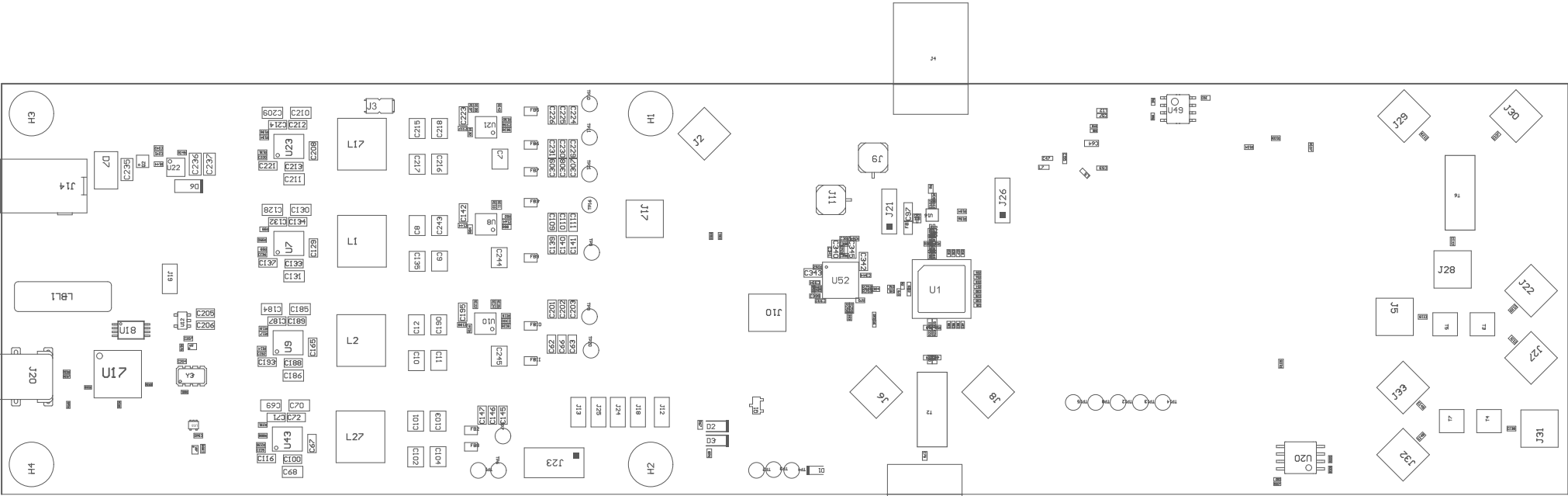
ZZ4

ZZ3
- Install label in silkscreened box after final wash. Text shall be 8 pt font. Text shall be per the Label Table in the PDF schematic.

■These assemblies are ESD sensitive, ESD precautions shall be observed.

■These assemblies must comply with workmanship standards IPC-A-610 Class 2, unless otherwise specified.

■These assemblies must be clean and free from flux and all contaminants. Use of no clean flux is not acceptable.



COMPONENTS MARKED 'DNP' SHOULD NOT BE POPULATED.
ASSEMBLY VARIANT: External clock

PCB VIEWED FROM TOP SIDE	BOARD #: N/A	REV: E2	SUN REV: Not In VersionControl
PLOT NAME = N/A	GENERATED : 20-Sep-21 6:24:23 AM	TEXAS INSTRUMENTS	

