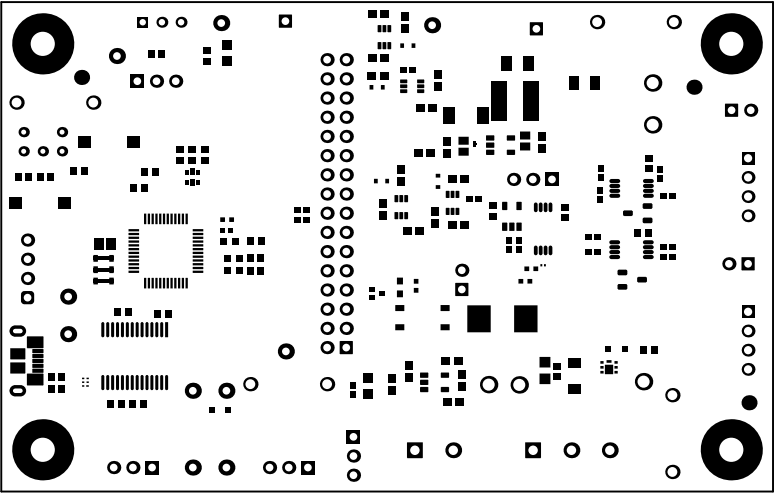
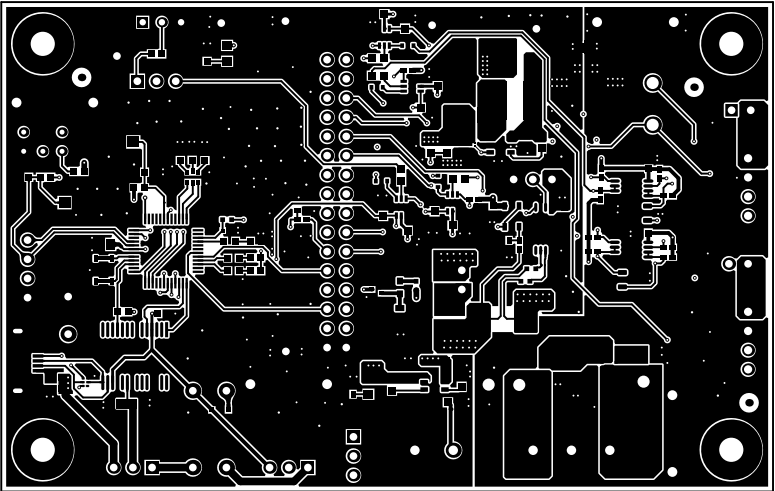


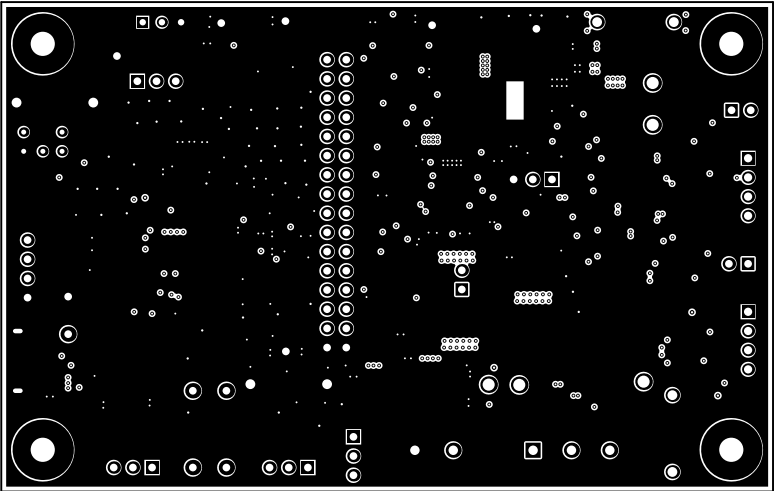
ALL ARTWORK VIEWED FROM TOP SIDE	BOARD #:	MC121EVM	REV:	D	SUN REV:	Not in version control
LAYER NAME = Top Overlay	TID #:	N/A				
PLOT NAME = Top Overlay	GENERATED	: 11/14/2025 10:12:45 AM			TEXAS INSTRUMENTS	



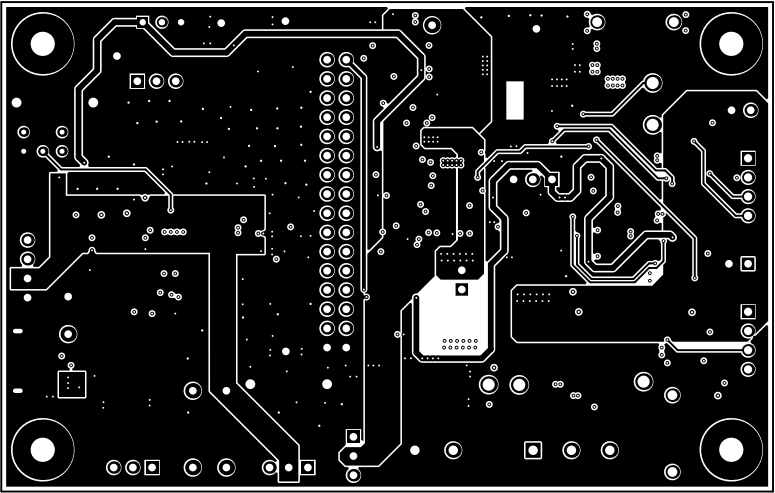
ALL ARTWORK VIEWED FROM TOP SIDE	BOARD #: MC121EVM	REV: D	SUN REV: Not in version control
LAYER NAME = Top Solder	TID #: N/A		
PLOT NAME = Top Solder Mask	GENERATED : 11/14/2025 10:12:45 AM	TEXAS INSTRUMENTS	



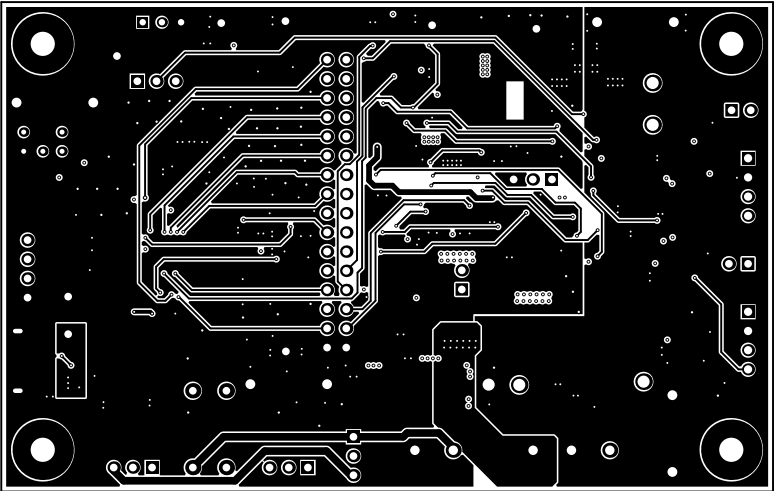
ALL ARTWORK VIEWED FROM TOP SIDE	BOARD #: MC121EVM	REV: D	SUN REV: Not in version control
LAYER NAME = Top Layer	TID #: N/A		
PLOT NAME = Top Layer	GENERATED : 11/14/2025 10:12:45 AM		TEXAS INSTRUMENTS



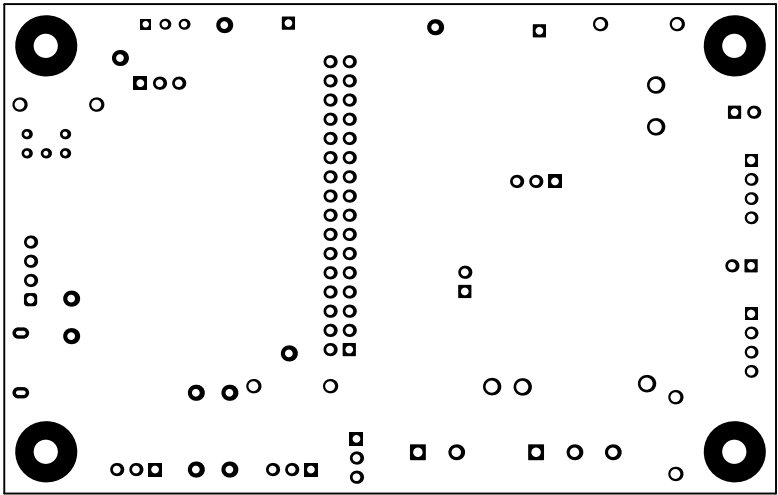
ALL ARTWORK VIEWED FROM TOP SIDE	BOARD #: MC121EVM	REV: D	SUN REV: Not in version control
LAYER NAME = Ground	TID #: N/A		
PLOT NAME = Signal Layer 1	GENERATED : 11/14/2025 10:12:45 AM		TEXAS INSTRUMENTS



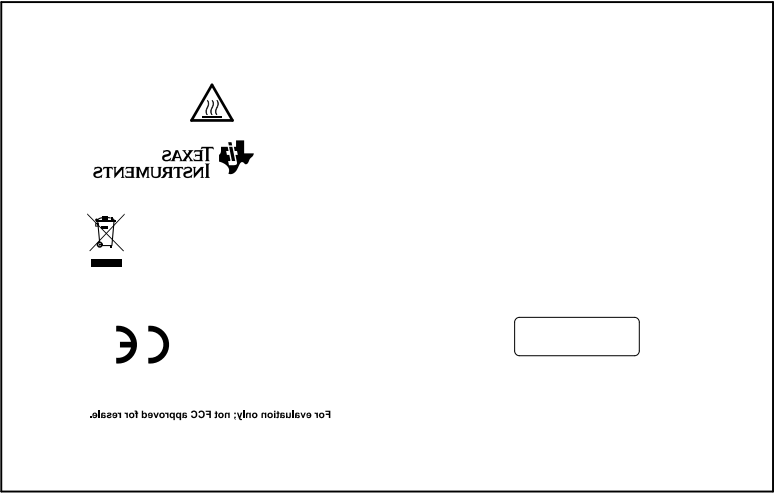
ALL ARTWORK VIEWED FROM TOP SIDE	BOARD #: MC121EVM	REV: D	SUN REV: Not in version control
LAYER NAME = Power	TID #: N/A		
PLOT NAME = Signal Layer 2	GENERATED : 11/14/2025 10:12:45 AM		TEXAS INSTRUMENTS



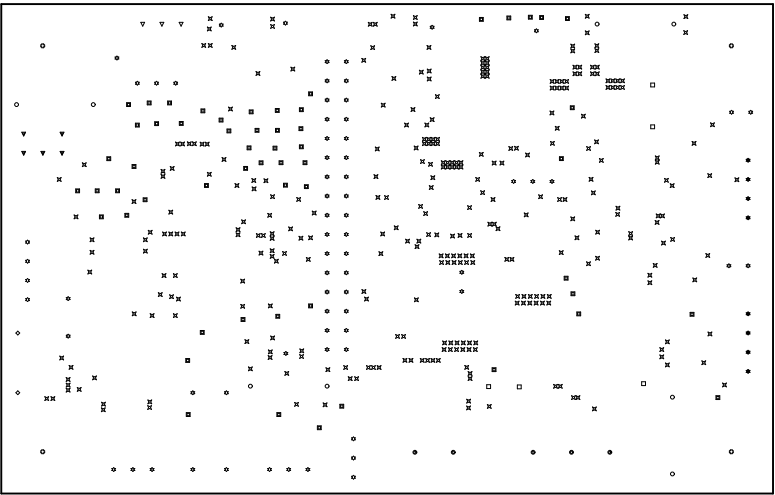
ALL ARTWORK VIEWED FROM TOP SIDE	BOARD #: MC121EVM	REV: D	SUN REV: Not in version control
LAYER NAME = Bottom Layer	TID #: N/A		
PLOT NAME = Bottom Layer	GENERATED : 11/14/2025 10:12:45 AM		TEXAS INSTRUMENTS



ALL ARTWORK VIEWED FROM TOP SIDE	BOARD #: MC121EVM	REV: D	SUN REV: Not in version control
LAYER NAME = Bottom Solder	TID #: N/A		
PLOT NAME = Bottom Solder Mask	GENERATED : 11/14/2025 10:12:45 AM		TEXAS INSTRUMENTS



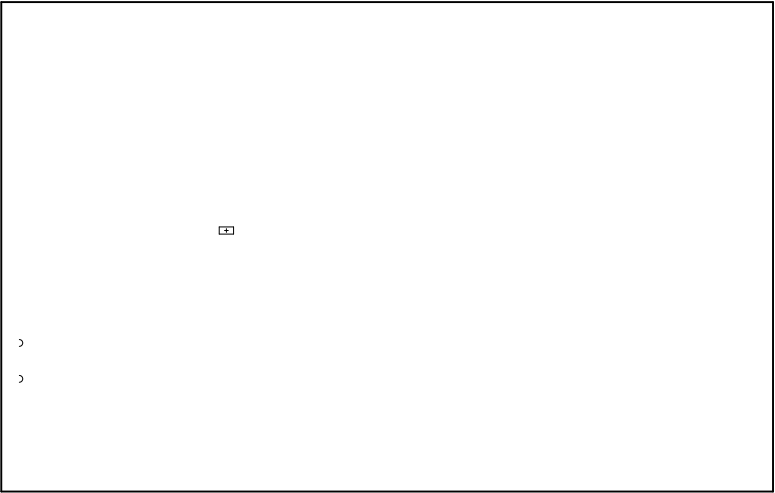
ALL ARTWORK VIEWED FROM TOP SIDE	BOARD #: MC121EVM	REV: D	SUN REV: Not in version control
LAYER NAME = Bottom Overlay	TID #: N/A		
PLOT NAME = Bottom Overlay	GENERATED : 11/14/2025 10:12:45 AM		TEXAS INSTRUMENTS



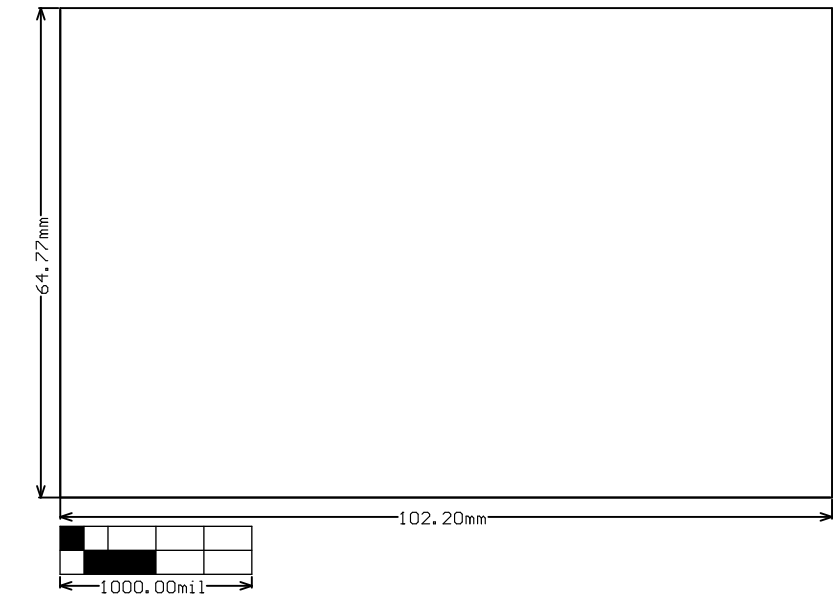
Symbol	Quantity	Finished Hole Size	Plated	Hole Type	Drill Layer Pair	Hole Tolerance
✕	322	10.00mil (0.254mm)	PTH	Round	Top Layer - Bottom Layer	
■	56	12.00mil (0.305mm)	PTH	Round	Top Layer - Bottom Layer	
▼	5	26.00mil (0.660mm)	PTH	Round	Top Layer - Bottom Layer	
▽	3	33.47mil (0.850mm)	PTH	Round	Top Layer - Bottom Layer	
☆	69	40.00mil (1.016mm)	PTH	Round	Top Layer - Bottom Layer	
✳	8	42.91mil (1.090mm)	PTH	Round	Top Layer - Bottom Layer	
●	5	49.21mil (1.250mm)	PTH	Round	Top Layer - Bottom Layer	
○	8	51.18mil (1.300mm)	PTH	Round	Top Layer - Bottom Layer	
□	5	63.00mil (1.600mm)	PTH	Round	Top Layer - Bottom Layer	
⊛	4	125.98mil (3.200mm)	PTH	Round	Top Layer - Bottom Layer	
◇	2	23.62mil (0.600mm)	PTH	Slot	Top Layer - Bottom Layer	
487 Total						

Slot definitions : Routed Path Length = Calculated from tool start centre position to tool end centre position.
Hole Length = Routed Path Length + Tool Size = Slot length as defined in the PCB layout

ALL ARTWORK VIEWED FROM TOP SIDE	BOARD #: MC121EVM	REV: D	SUN REV: Not in version control
LAYER NAME = Drill Drawing	TID #: N/A		
PLOT NAME = Drill Drawing	GENERATED : 11/14/2025 10:12:46 AM	TEXAS INSTRUMENTS	



ALL ARTWORK VIEWED FROM TOP SIDE	BOARD #: MC121EVM	REV: D	SUN REV: Not in version control
LAYER NAME =	TID #: N/A		
PLOT NAME = SLPT	GENERATED : 11/14/2025 10:12:46 AM		TEXAS INSTRUMENTS



ALL ARTWORK VIEWED FROM TOP SIDE	BOARD #: MC121EVM	REV: D	SUN REV: Not in version control
LAYER NAME = M2 Board Dimensions	TID #: N/A		
PLOT NAME = Board Dimensions	GENERATED : 11/14/2025 10:12:46 AM		TEXAS INSTRUMENTS