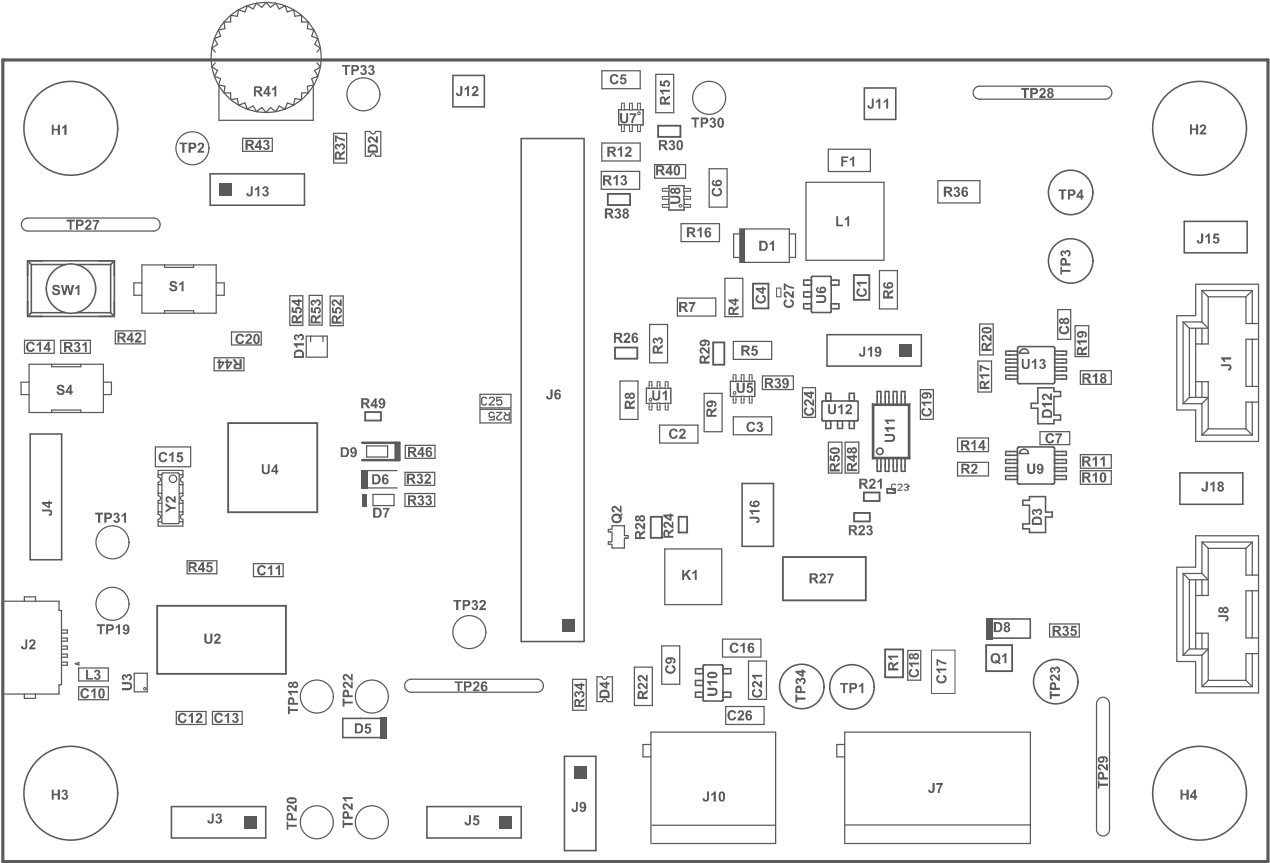
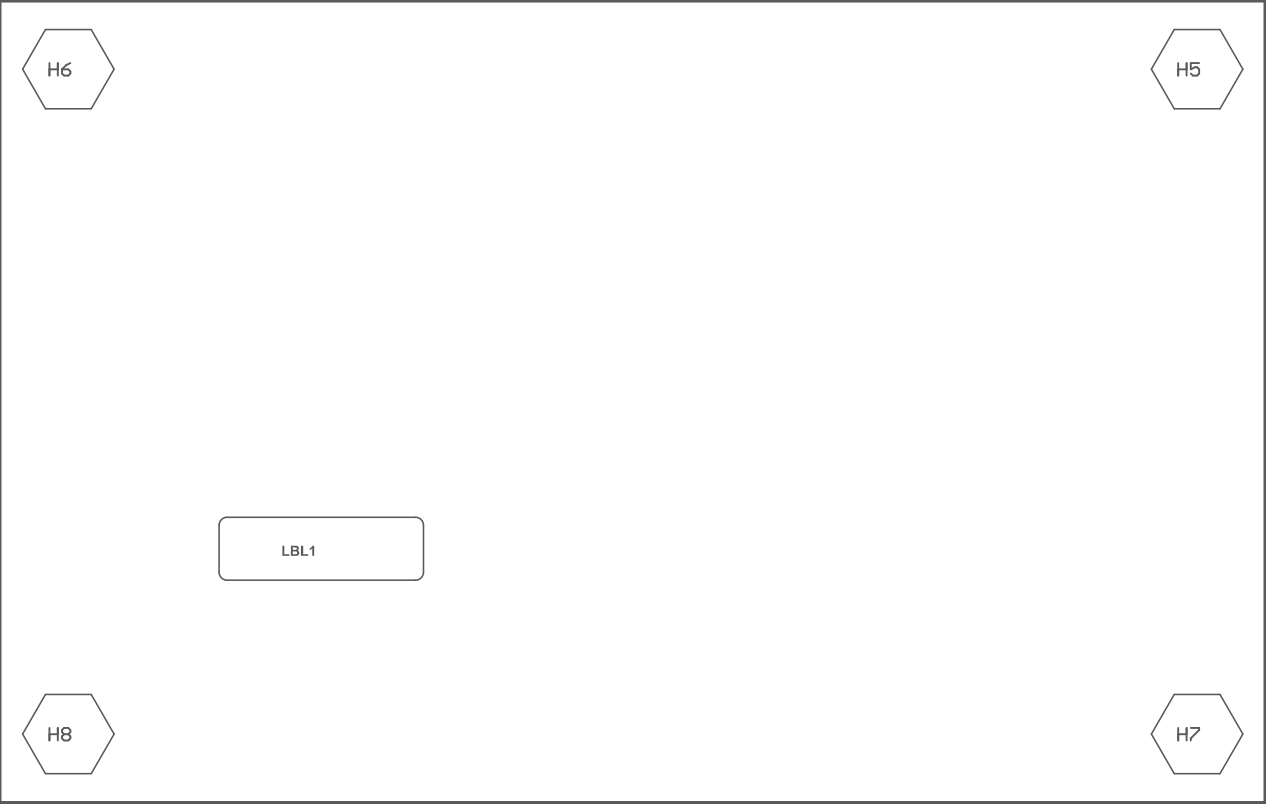


- zz1 ■Install label in silkscreened box after final wash. Text shall be 8 pt font. Text shall be per the Label Table in the PDF schematic.
- zz2 ■These assemblies are ESD sensitive, ESD precautions shall be observed.
- zz3 ■These assemblies must be clean and free from flux and all contaminants. Use of no clean flux is not acceptable.
- zz4 ■These assemblies must comply with workmanship standards IPC-A-610 Class 2, unless otherwise specified.



COMPONENTS MARKED 'DNP' SHOULD NOT BE POPULATED.
ASSEMBLY VARIANT: 001

PCB VIEWED FROM TOP SIDE	BOARD #: MC121EVM	REV: D	SVN REV: Not in version control
M5 Assembly Top	TID #: N/A		
PLOT NAME = Top Assembly Drawing	GENERATED : 11/14/2025 10:16:22 AM		TEXAS INSTRUMENTS



COMPONENTS MARKED 'DNP' SHOULD NOT BE POPULATED.
ASSEMBLY VARIANT: 001

PCB VIEWED FROM BOTTOM SIDE	BOARD #: MC121EVM	REV: D	SVN REV: Not in version control
M6 Assembly Bottom	TID #: N/A		
PLOT NAME = Bottom Assembly Drawing	GENERATED : 11/14/2025 10:16:22 AM		TEXAS INSTRUMENTS