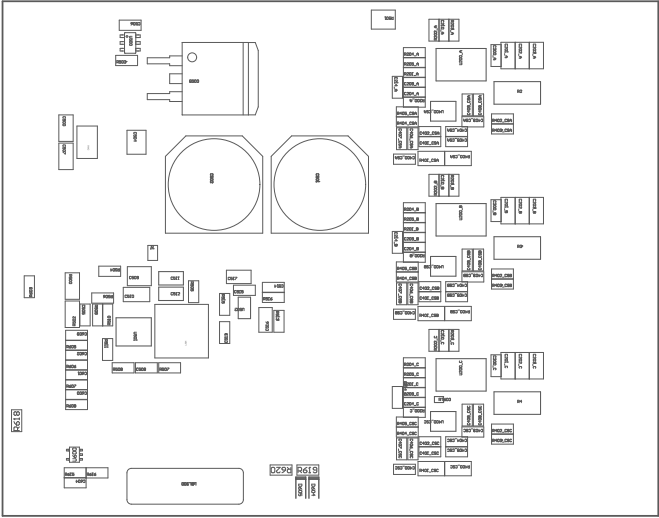
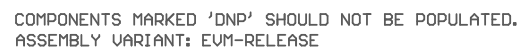


- These assemblies must comply with workmanship standards IPC-A-610 Class 2, unless otherwise specified.
- These assemblies must be clean and free from flux and all contaminants. Use of no clean flux is not acceptable.
- These assemblies are ESD sensitive, ESD precautions shall be observed.
- Install label in silkscreened box after final wash. Text shall be 8 pt font. Text shall be per the Label Table in the PDF schematic.



COMPONENTS MARKED 'DNP' SHOULD NOT BE POPULATED.
ASSEMBLY VARIANT: EVM-RELEASE

PCB VIEWED FROM TOP SIDE	BOARD #: DC402	REV: A	SUN REV: Not in version control
	TID #: DC402		
PLOT NAME = Top Assembly Drawing	GENERATED : 7/4/2025	3:04:03 PM	TEXAS INSTRUMENTS



PCB VIEWED FROM BOTTOM SIDE	BOARD #: DC402	REV: A	SUN REV: Not in version control
	TID #: DC402		
PLOT NAME = Bottom Assembly Drawing	GENERATED : 7/4/2025 3:04:03 PM		TEXAS INSTRUMENTS