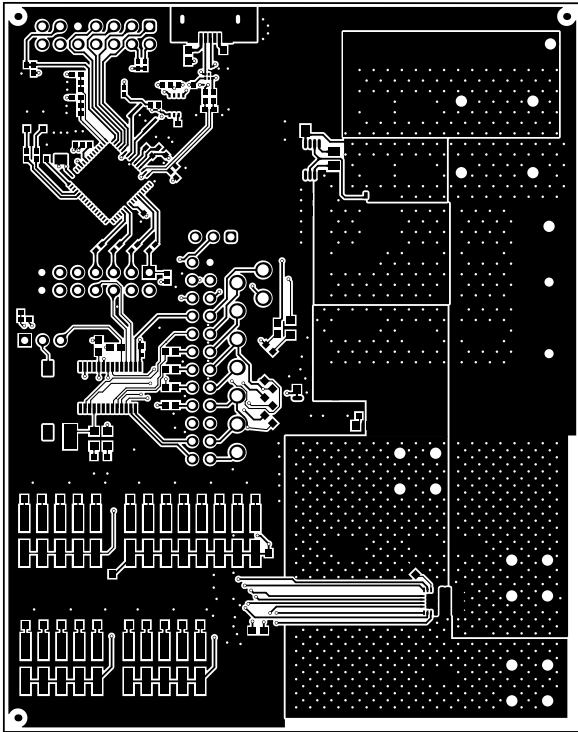
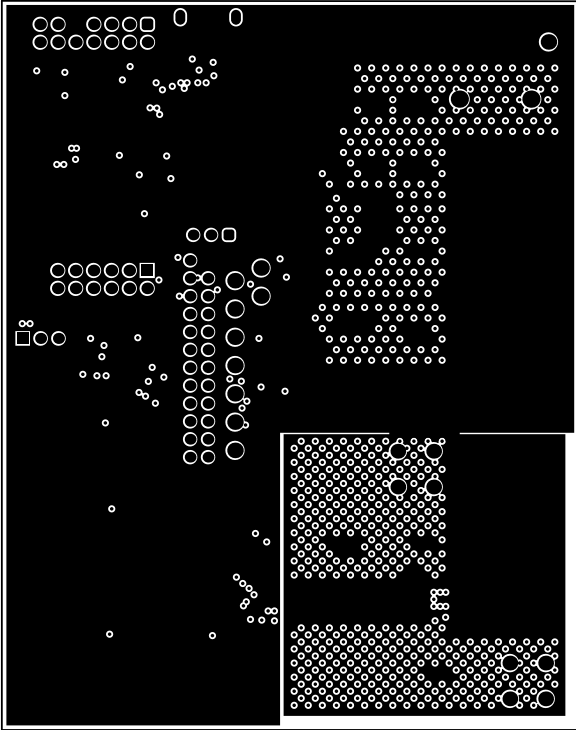


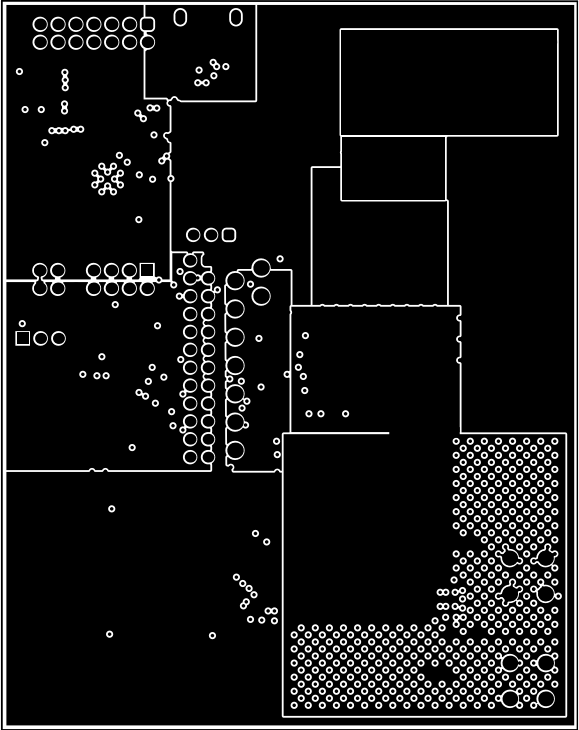
ALL ARTWORK VIEWED FROM TOP SIDE	BOARD #:	10044	REV:	A	SUN REV:	9497b7228a77c0994b878eeba39881ad4daca2c0 [Locally Modified]
LAYER NAME =	Top Solder	TID #:	N/A			
PLOT NAME =	Top Solder Mask	GENERATED :	10/19/2022	2:53:29 PM	TEXAS INSTRUMENTS	



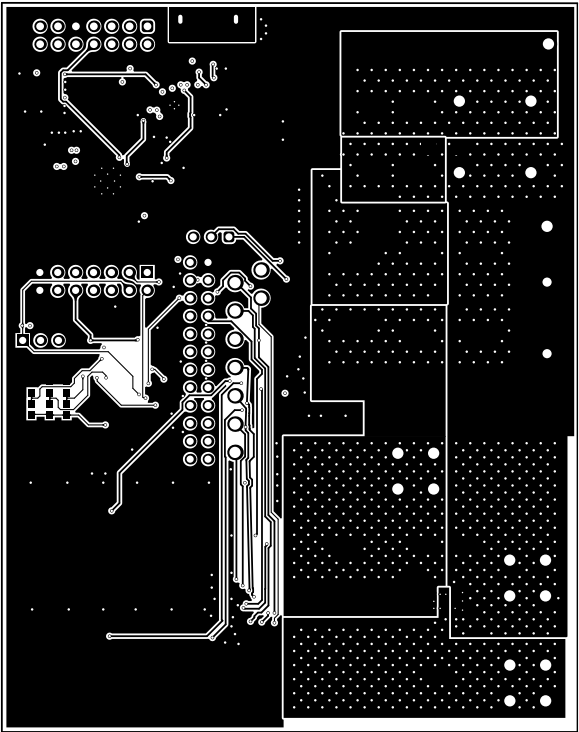
ALL NETWORK VIEWED FROM TOP SIDE	BOARD #:	10044	REV:	A	SUN REV:	9497b7228a77c0994b878eeba3988fad4daca2c0 [Locally Modified]
LAYER NAME =	Top Layer	TID #:	N/A			
PLOT NAME =	Top Layer	GENERATED :	10/19/2022	2:53:29 PM	TEXAS INSTRUMENTS	



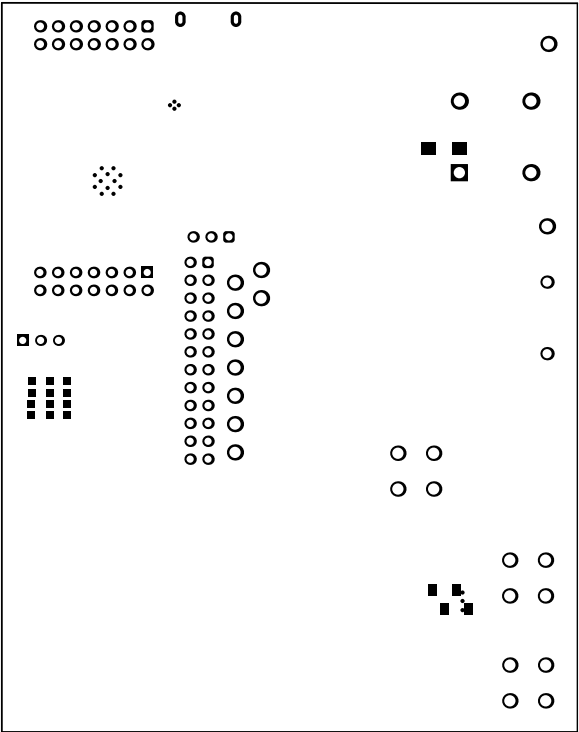
ALL PARTWORK VIEWED FROM TOP SIDE	BOARD #:	10044	REV:	A	SUN REV:	9497b7228a77c0994b878eeba39881ad4daca2c0 [Locally Modified]
LAYER NAME =	TID #:	N/A				
PLOT NAME = Signal 1	GENERATED :	10/19/2022	2:53:24 PM	TEXAS INSTRUMENTS		



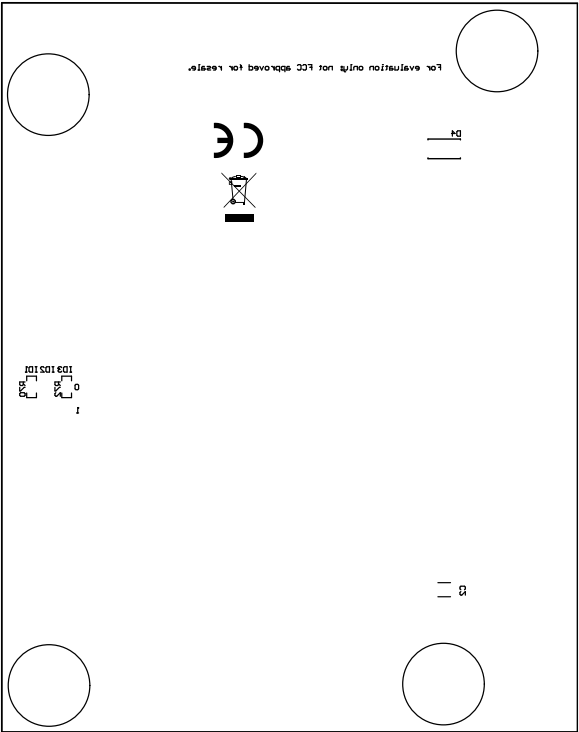
ALL NETWORK VIEWED FROM TOP SIDE	BOARD #:	10044	REV:	A	SUN REV:	9497b7228a77c0994b878eeba3988fad4daca2c0 [Locally Modified]
LAYER NAME =	TID #:	N/A				
PLOT NAME =	Signal 2	GENERATED :	10/19/2022	2:53:24 PM	TEXAS INSTRUMENTS	



ALL artwork viewed from TOP SIDE	BOARD #:	10044	REV:	A	SUN REV:	9497b7228a77c0994b878eeba39881ad4daca2c0 [Locally Modified]
LAYER NAME =	Bottom Layer	TID #:	N/A			
PLOT NAME =	Bottom Layer	GENERATED :	10/19/2022	2:53:26 PM	TEXAS INSTRUMENTS	



ALL ARTWORK VIEWED FROM TOP SIDE	BOARD #:	10044	REV:	A	SUN REV:	9497b7228a77c0994b878eeba39881ad4daca2c0 [Locally Modified]
LAYER NAME = Bottom Solder	TID #:	N/A				
PLOT NAME = Bottom Solder Mask	GENERATED :	10/19/2022	2:53:28 PM	TEXAS INSTRUMENTS		

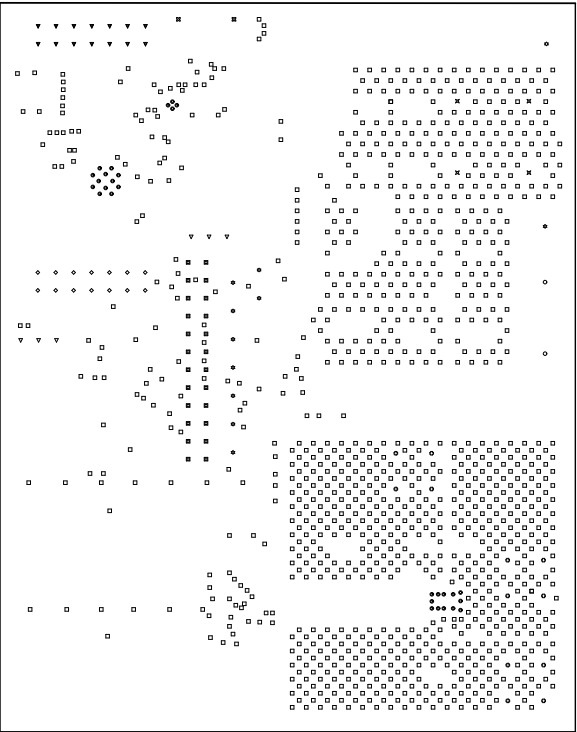


ALL NETWORK VIEWED FROM TOP SIDE	BOARD #: ID044	REV: A	SUN REV: 9497b7228a77c0994b878eeba39886ad4daca2c0 [Locally Modified]
LAYER NAME = Bottom Overlay	TID #: N/A		
PLOT NAME = Bottom Overlay	GENERATED : 10/19/2022 2:53:26 PM	TEXAS INSTRUMENTS	

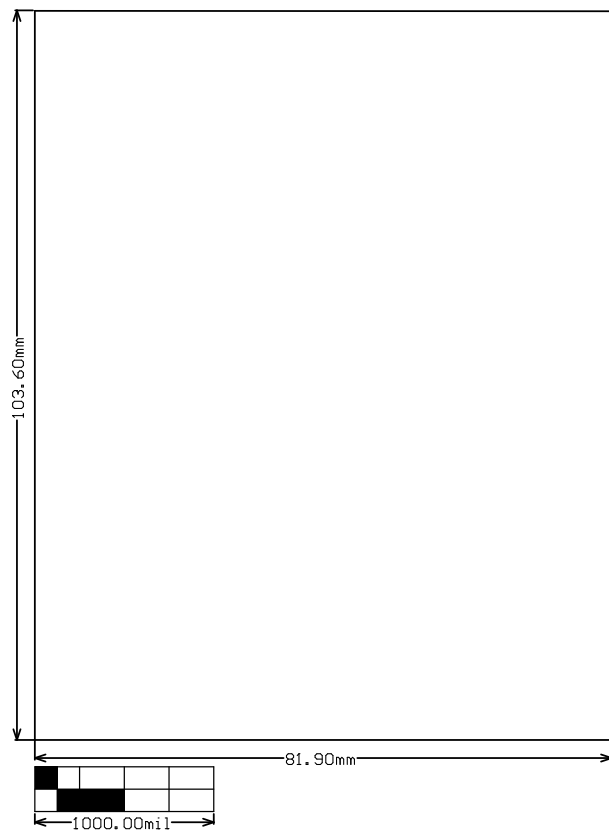


Symbol	Quantity	Finished Hole Size	Plated	Hole Type	Drill Layer Pair	Hole Tolerance
⊙	28	7.87mil (0.200mm)	PTH	Round	Top Layer - Bottom Layer	
□	1087	13.78mil (0.350mm)	PTH	Round	Top Layer - Bottom Layer	
◇	14	40.00mil (1.016mm)	PTH	Round	Top Layer - Bottom Layer	
▣	24	40.16mil (1.020mm)	PTH	Round	Top Layer - Bottom Layer	+/-3.15mil
▽	6	40.16mil (1.020mm)	PTH	Round	Top Layer - Bottom Layer	
▼	14	43.31mil (1.100mm)	PTH	Round	Top Layer - Bottom Layer	+/-1.97mil
○	2	51.18mil (1.300mm)	PTH	Round	Top Layer - Bottom Layer	
⊕	12	62.99mil (1.600mm)	PTH	Round	Top Layer - Bottom Layer	+3.94mil/-0.00mil
⊗	4	62.99mil (1.600mm)	PTH	Round	Top Layer - Bottom Layer	
☆	11	63.00mil (1.600mm)	PTH	Round	Top Layer - Bottom Layer	
⊗	2	23.62mil (0.600mm)	PTH	Slot	Top Layer - Bottom Layer	
	1204 Total					

Slot definitions : Routed Path Length = Calculated from tool start centre position to tool end centre position.  
Hole Length = Routed Path Length + Tool Size = Slot length as defined in the PCB layout



ALL NETWORK VIEWED FROM TOP SIDE	BOARD #: ID044	REV: A	SUN REV: 9497b7228a77c0994b878eeba39881ad4daca2c0 (Locally Modified)
LAYER NAME = Drill Drawing	TID #: N/A		
PLOT NAME = Drill Drawing	GENERATED : 10/19/2022 2:53:26 PM	TEXAS INSTRUMENTS	



ALL artwork VIEWED FROM TOP SIDE	BOARD #:	10044	REV:	A	SUN REV:	9497b7228a77c0994b878eeba39881ad4dca2c0 [Locally Modified]
LAYER NAME =	M2 Board Dimensions	TID #:	N/A			
PLOT NAME =	Board Dimensions	GENERATED :	10/19/2022	2:53:28 PM	TEXAS INSTRUMENTS	