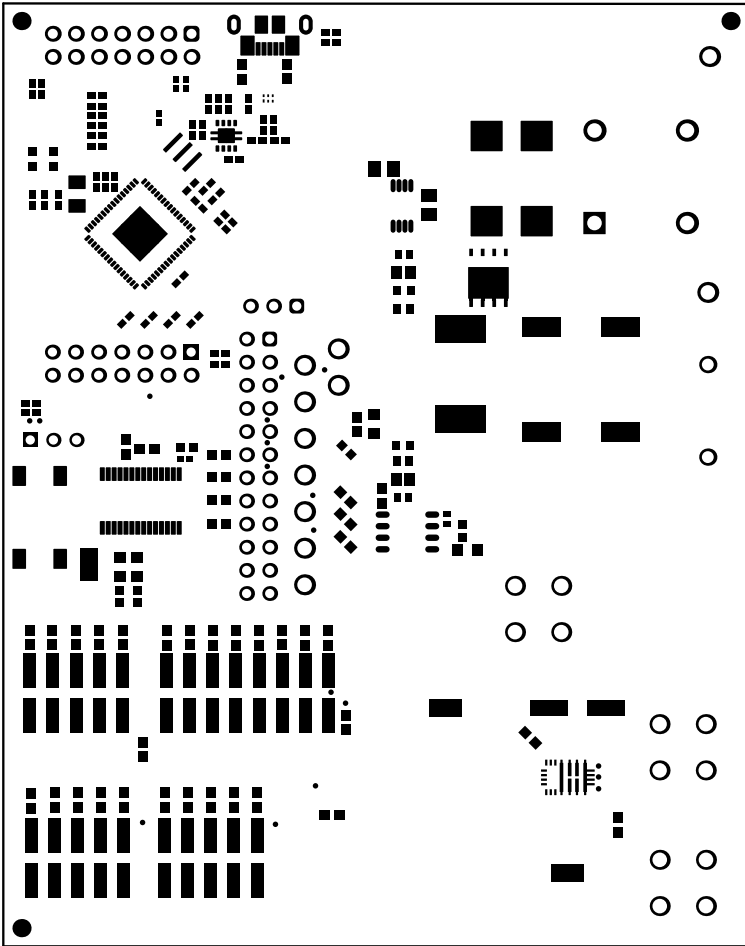
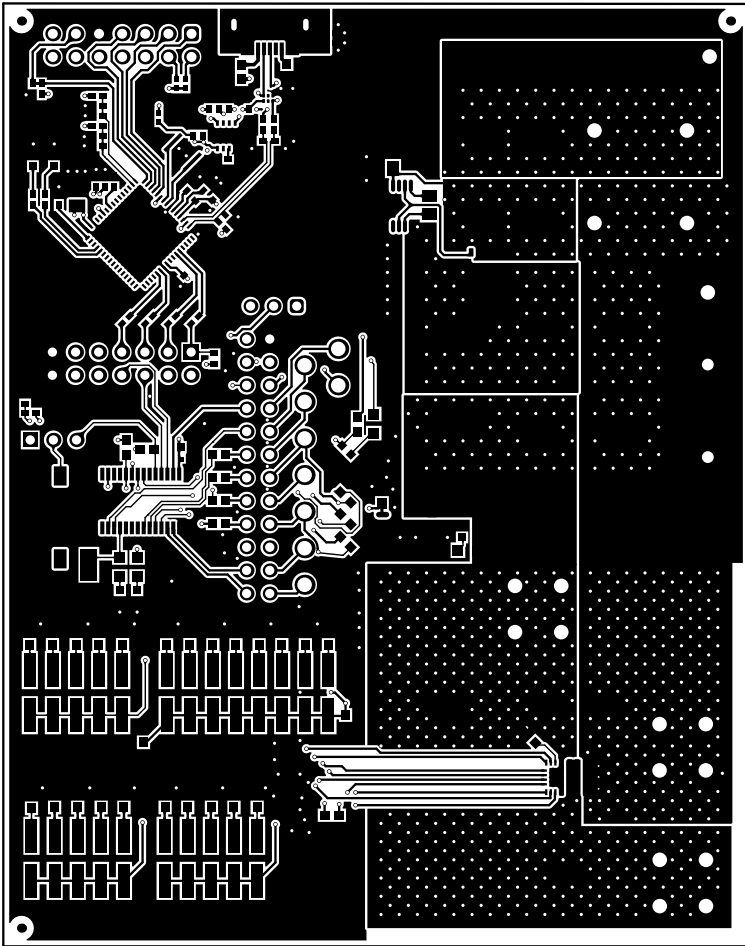


SH-J17

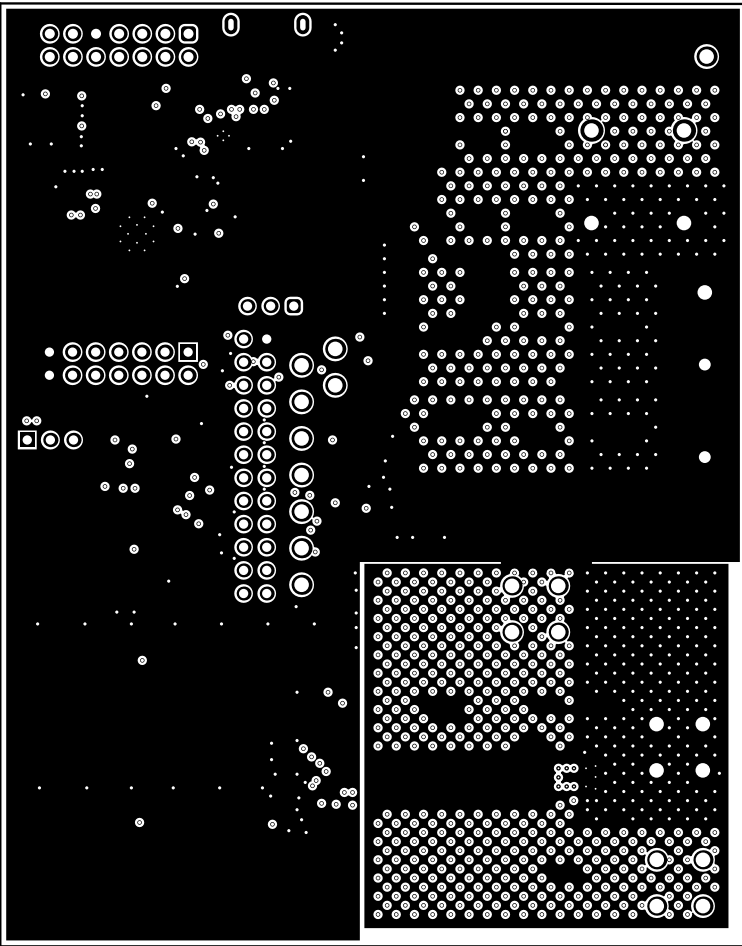
ALL ARTWORK VIEWED FROM TOP SIDE	BOARD #: MD044	REV: A	SUN REV: 9497b7228a77c0994b678eeba3988fad4daca2c0 [Locally Modified]
LAYER NAME = Top Overlay	TID #: N/A		
PLOT NAME = Top Overlay	GENERATED: 10/19/2022 2:55:28 PM	TEXAS INSTRUMENTS	



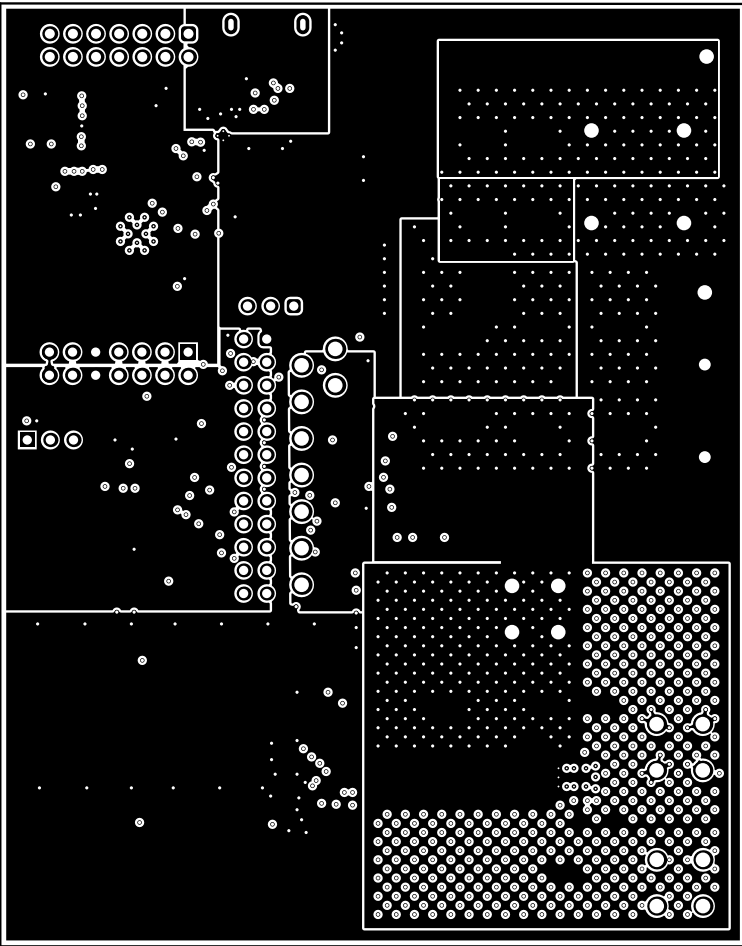
ALL ARTWORK VIEWED FROM TOP SIDE	BOARD #:	MD044	REV:	A	SUN REV:	9497b7228a77c0994b678eeba3988fad4daca2c0 [Locally Modified]
LAYER NAME =	Top Solder	TID #:	N/A			
PLOT NAME =	Top Solder Mask	GENERATED :	10/19/2022	2:55:29 PM	TEXAS INSTRUMENTS	



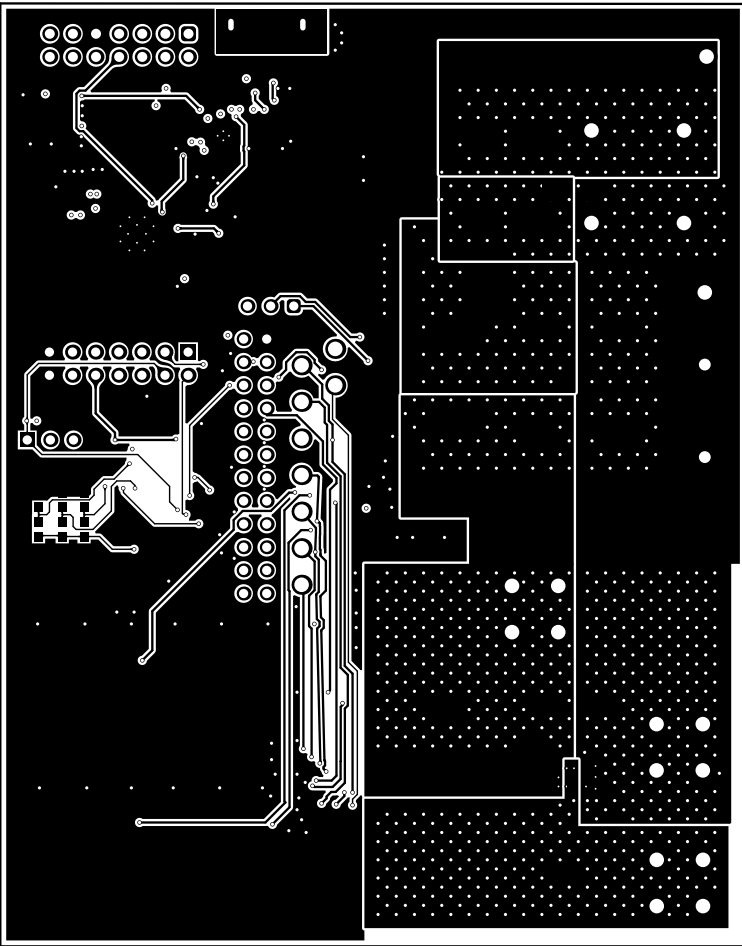
ALL ARTWORK VIEWED FROM TOP SIDE	BOARD #:	MD044	REV:	A	SUN REV:	9497b7228a77c0994b678eeba3988fad4daca2c0 [Locally Modified]
LAYER NAME =	Top Layer	TID #:	N/A			
PLOT NAME =	Top Layer	GENERATED	10/19/2022	2:55:29 PM	TEXAS INSTRUMENTS	



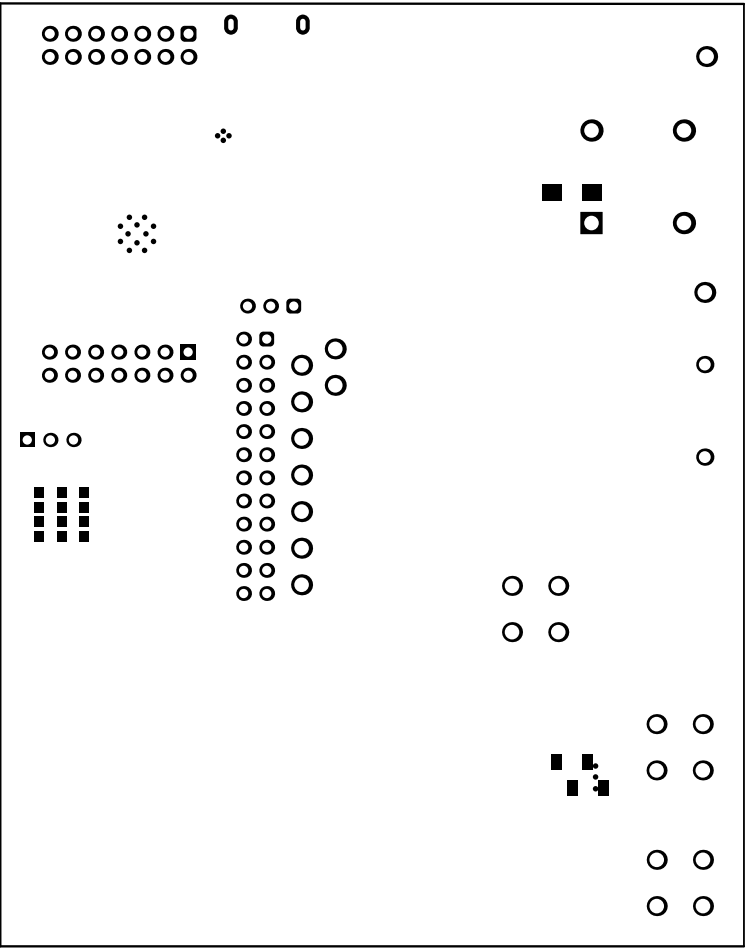
ALL ARTWORK VIEWED FROM TOP SIDE	BOARD #:	MD044	REV:	A	SUN REV:	9497b7228a77c0994b678eeba3988fad4daca2c0 [Locally Modified]
LAYER NAME =	TID #:	N/A				
PLOT NAME =	Signal Layer 1	GENERATED :	10/19/2022	2:55:30 PM	TEXAS INSTRUMENTS	



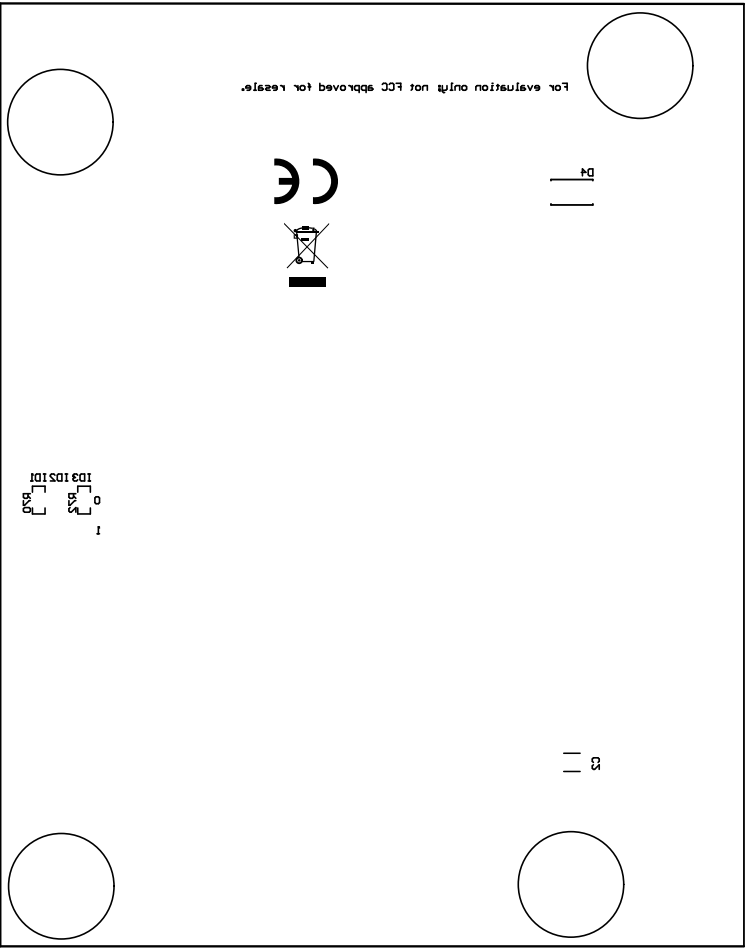
ALL ARTWORK VIEWED FROM TOP SIDE	BOARD #:	MD044	REV:	A	SUN REV:	9497b7228a77c0994b678eeba3988fad4daca2c0 [Locally Modified]
LAYER NAME =	TID #:	N/A				
PLOT NAME =	Signal Layer 2	GENERATED :	10/19/2022	2:55:30 PM	TEXAS INSTRUMENTS	



ALL ARTWORK VIEWED FROM TOP SIDE	BOARD #:	MD044	REV:	A	SUN REV:	9497b7228a77c0994b678eeba3988fad4daca2c0 [Locally Modified]
LAYER NAME =	Bottom Layer	TID #:	N/A			
PLOT NAME =	Bottom Layer	GENERATED	10/19/2022	2:55:31 PM	TEXAS INSTRUMENTS	



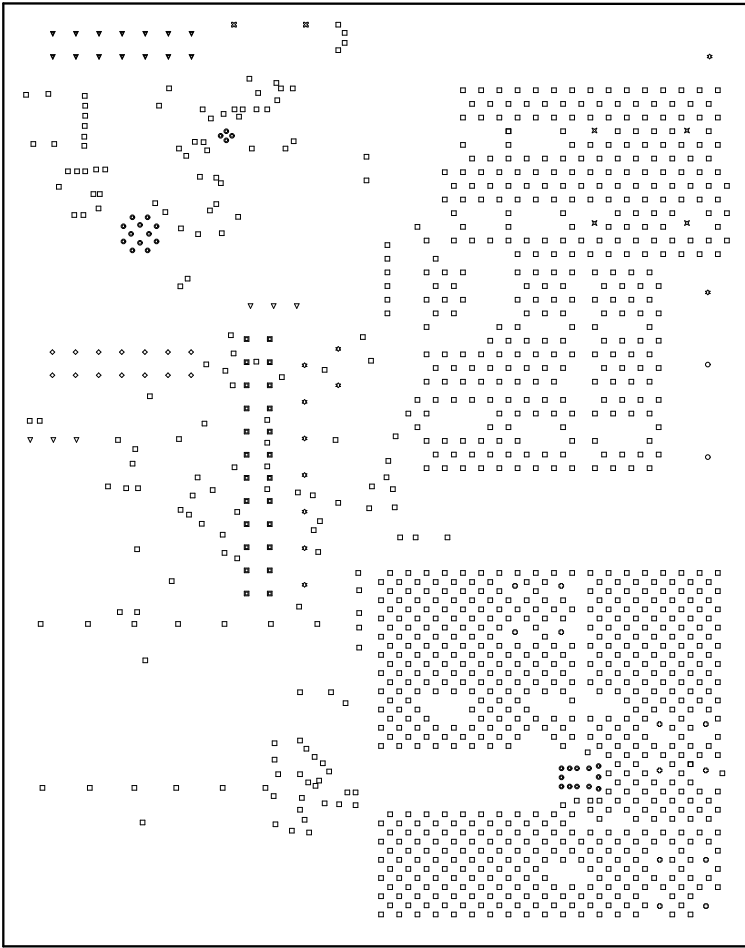
ALL ARTWORK VIEWED FROM TOP SIDE	BOARD #:	M0044	REV:	A	SUN REV:	9497b7228a77c0994b878eeba3988fad4daca2c0 [Locally Modified]
LAYER NAME =	Bottom Solder	TID #:	N/A			
PLOT NAME =	Bottom Solder Mask	GENERATED :	10/19/2022	2:55:32 PM	TEXAS INSTRUMENTS	



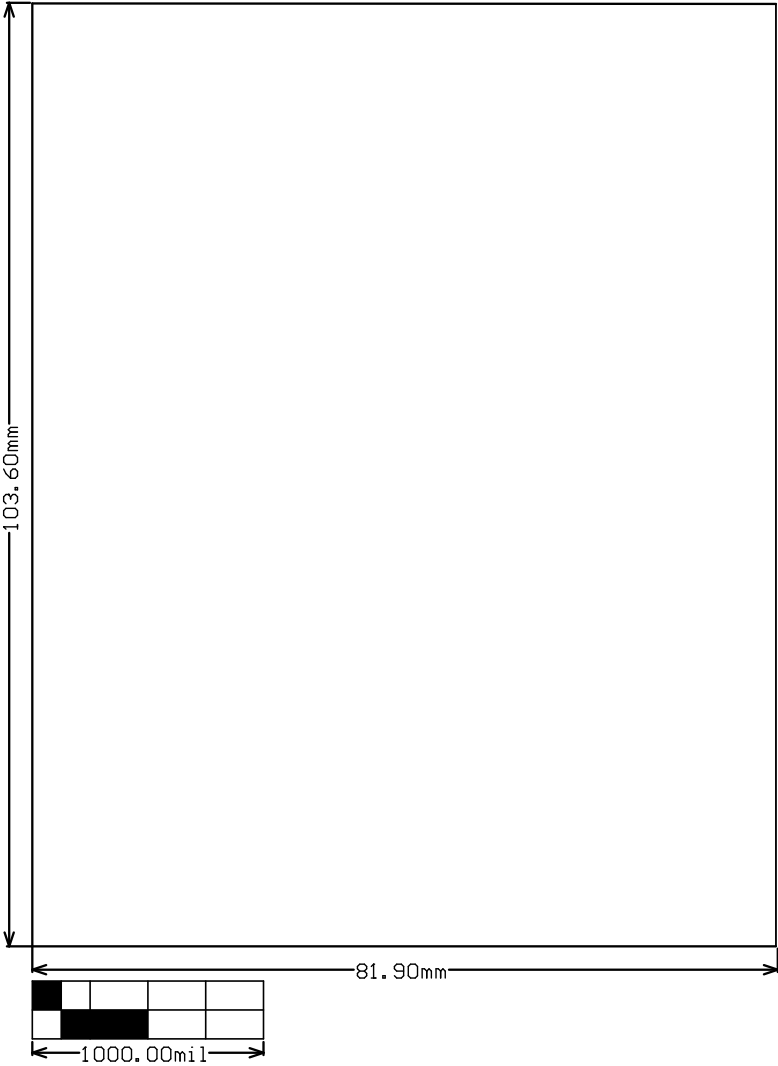
ALL ARTWORK VIEWED FROM TOP SIDE	BOARD #: MD044	REV: A	SUN REV: 9497b7228a77c0994b878eeba3988fad4daca2c0 [Locally Modified]
LAYER NAME = Bottom Overlay	TID #: N/A		
PLOT NAME = Bottom Overlay	GENERATED : 10/19/2022 2:55:32 PM	TEXAS INSTRUMENTS	

Symbol	Quantity	Finished Hole Size	Plated	Hole Type	Drill Layer Pair	Hole Tolerance
⊙	28	7.87mil <0.200mm	PTH	Round	Top Layer - Bottom Layer	+/-3.15mil
□	1087	13.78mil <0.350mm	PTH	Round	Top Layer - Bottom Layer	
◇	14	40.00mil <1.016mm	PTH	Round	Top Layer - Bottom Layer	
▣	24	40.16mil <1.020mm	PTH	Round	Top Layer - Bottom Layer	
▽	6	40.16mil <1.020mm	PTH	Round	Top Layer - Bottom Layer	
▼	14	43.31mil <1.100mm	PTH	Round	Top Layer - Bottom Layer	+/-1.97mil
○	2	51.18mil <1.300mm	PTH	Round	Top Layer - Bottom Layer	+3.94mil/-0.00mil
⊕	12	62.99mil <1.600mm	PTH	Round	Top Layer - Bottom Layer	
⊗	4	62.99mil <1.600mm	PTH	Round	Top Layer - Bottom Layer	
⊛	11	63.00mil <1.600mm	PTH	Round	Top Layer - Bottom Layer	
⊠	2	23.62mil <0.600mm	PTH	Slot	Top Layer - Bottom Layer	
	1204 Total					

Slot definitions : Routed Path Length = Calculated from tool start centre position to tool end centre position.
Hole Length = Routed Path Length + Tool Size = Slot length as defined in the PCB layout



ALL ARTWORK VIEWED FROM TOP SIDE	BOARD #: MD044	REV: A	SUN REV: 9497b7228a77c0994b878eeba3988fad4daca2c0 [Locally Modified]
LAYER NAME = Drill Drawing	TID #: N/A		
PLOT NAME = Drill Drawing	GENERATED : 10/19/2022 2:55:32 PM	TEXAS INSTRUMENTS	



ALL ARTWORK VIEWED FROM TOP SIDE	BOARD #:	MD044	REV:	A	SUN REV:	9497b7228a77c0994b878eeba3988fad4daca2c0 [Locally Modified]
LAYER NAME =	M2 Board Dimensions	TID #:	N/A			
PLOT NAME =	Board Dimensions	GENERATED :	10/19/2022	2:55:34 PM	TEXAS INSTRUMENTS	