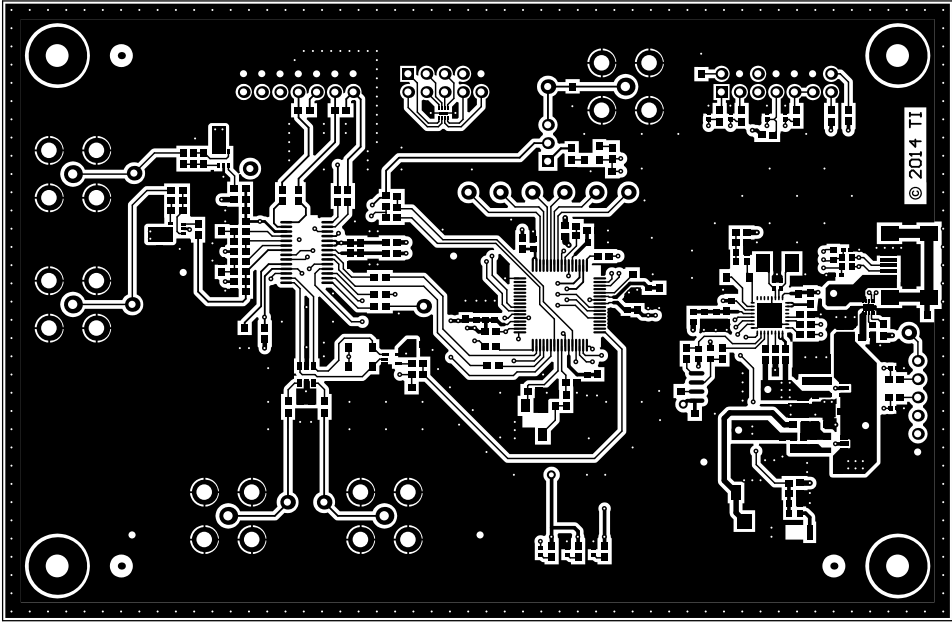
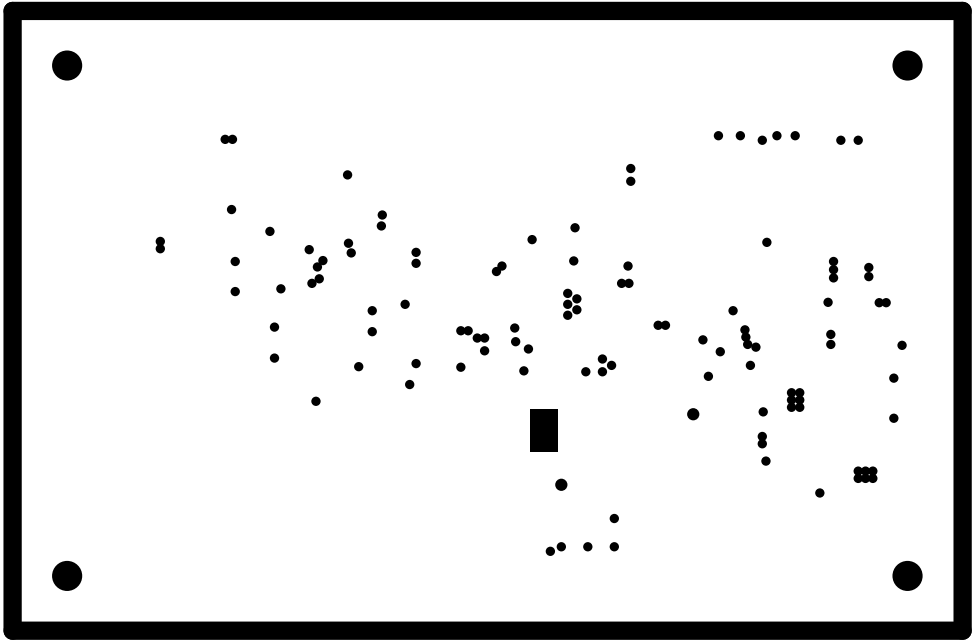


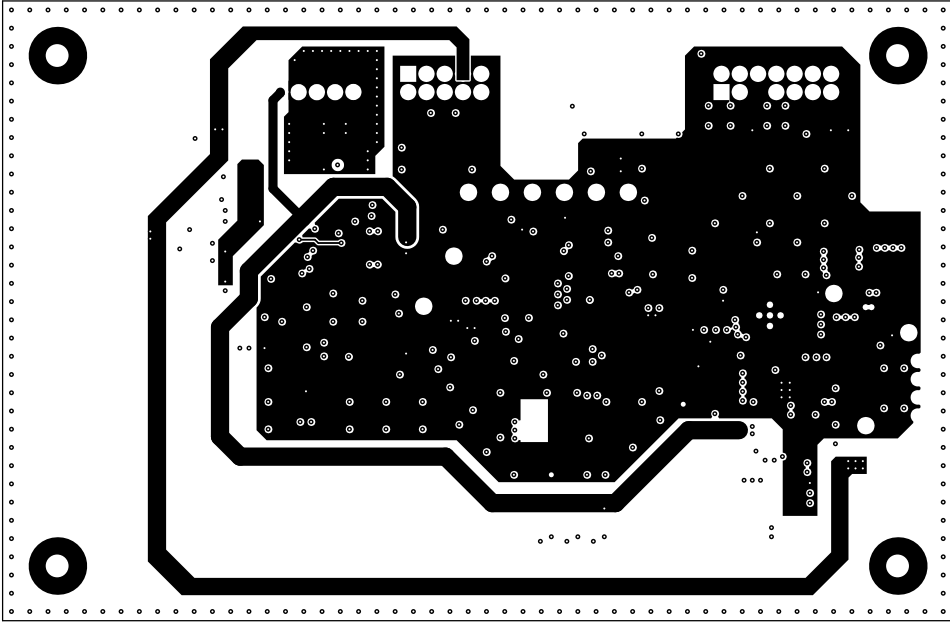
ALL ARTWORK VIEWED FROM TOP SIDE	BOARD #: SU601136	REV: A	SUN REV: Not In VersionControl
LAYER NAME = Top Solder			
PLOT NAME = Top Solder Mask			TEXAS INSTRUMENTS



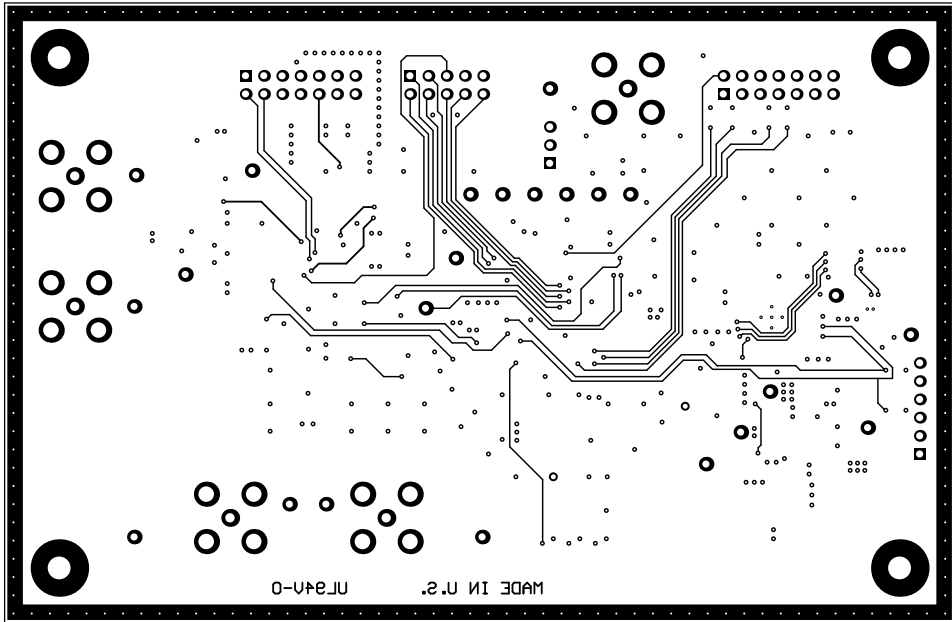
ALL ARTWORK VIEWED FROM TOP SIDE	BOARD #: SU601136	REV: A	SUN REV: Not In VersionControl
LAYER NAME = Top Layer			
PLOT NAME = Top Layer			TEXAS INSTRUMENTS



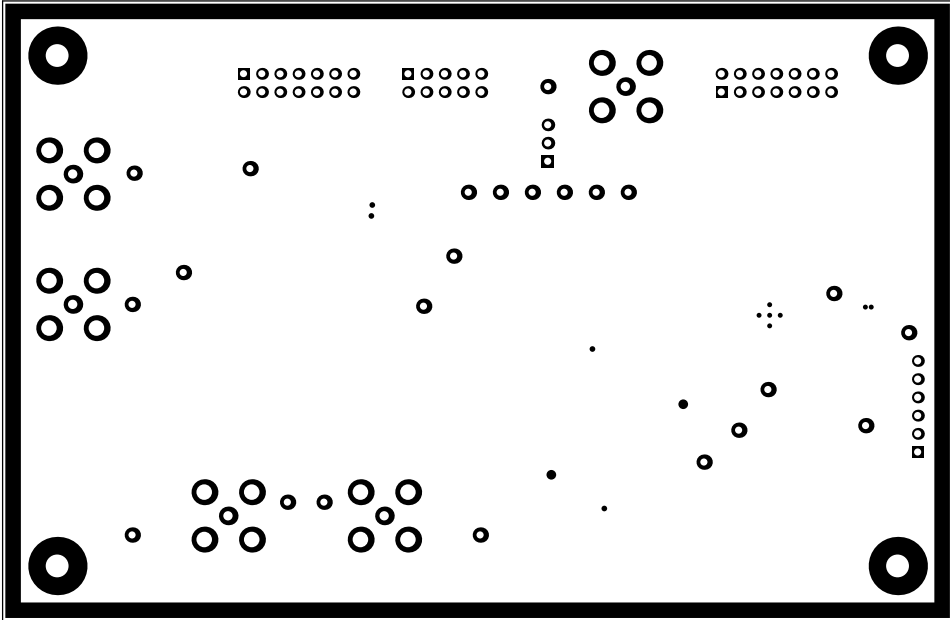
ALL ARTWORK VIEWED FROM TOP SIDE	BOARD #: SU601136	REV: A	SUN REV: Not In VersionControl
LAYER NAME = GNDBoard Outline			
PLOT NAME = GND			TEXAS INSTRUMENTS



ALL ARTWORK VIEWED FROM TOP SIDE	BOARD #: SU601136	REV: A	SUN REV: Not In VersionControl
LAYER NAME = POW Board Outline			
PLOT NAME = POWER			TEXAS INSTRUMENTS



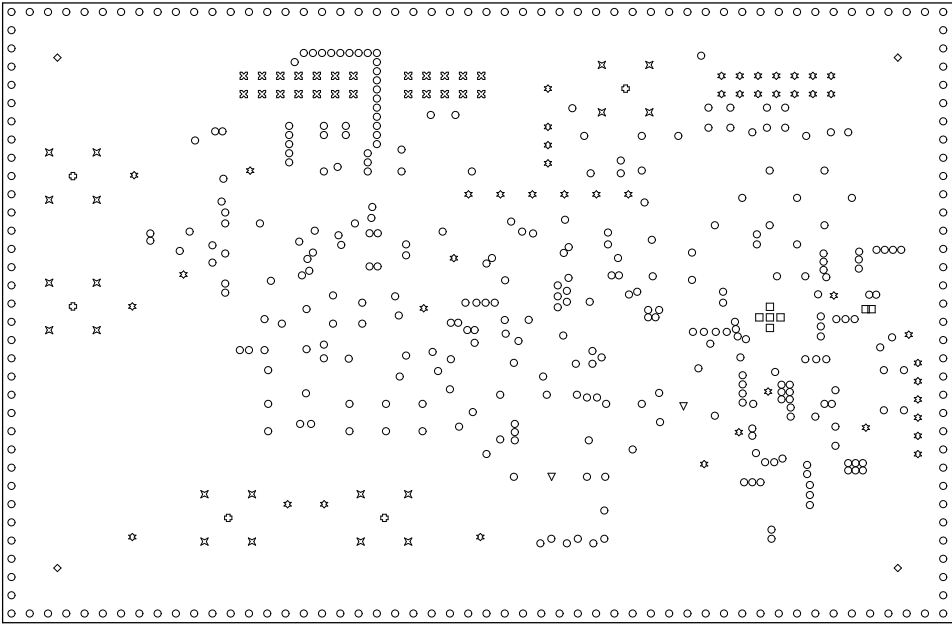
ALL ARTWORK VIEWED FROM TOP SIDE	BOARD #: SU601136	REV: A	SUN REV: Not In VersionControl
LAYER NAME = Bottom Layer			
PLOT NAME = Bottom Layer			TEXAS INSTRUMENTS



ALL ARTWORK VIEWED FROM TOP SIDE	BOARD #: SU601136	REV: A	SUN REV: Not In VersionControl
LAYER NAME = Bottom Solder			
PLOT NAME = Bottom Solder Mask			TEXAS INSTRUMENTS



ALL ARTWORK VIEWED FROM TOP SIDE	BOARD #: SU601136	REV: A	SUN REV: Not In VersionControl
LAYER NAME = Bottom Overlay			
PLOT NAME = Bottom Overlay			TEXAS INSTRUMENTS



Symbol	Hit Count	Tool Size	Plated	Hole Type
□	7	7.874mil (0.2mm)	PTH	Round
○	476	12mil (0.305mm)	PTH	Round
▽	2	28mil (0.711mm)	PTH	Round
⊠	24	39.37mil (1mm)	PTH	Round
✱	46	40mil (1.016mm)	PTH	Round
⊕	5	51.181mil (1.3mm)	PTH	Round
⊗	20	86.614mil (2.2mm)	PTH	Round
◇	4	125.984mil (3.2mm)	PTH	Round
	584 Total			

Drill Table

ALL ARTWORK VIEWED FROM TOP SIDE	BOARD #: SU601136	REV: A	SUN REV: Not In VersionControl
LAYER NAME = Drill Drawing			
PLOT NAME = Drill Drawing			TEXAS INSTRUMENTS



ALL ARTWORK VIEWED FROM TOP SIDE	BOARD #: SU601136	REV: A	SUN REV: Not In VersionControl
LAYER NAME = M2 Board Dimensions			
PLOT NAME = Board Dimensions			TEXAS INSTRUMENTS