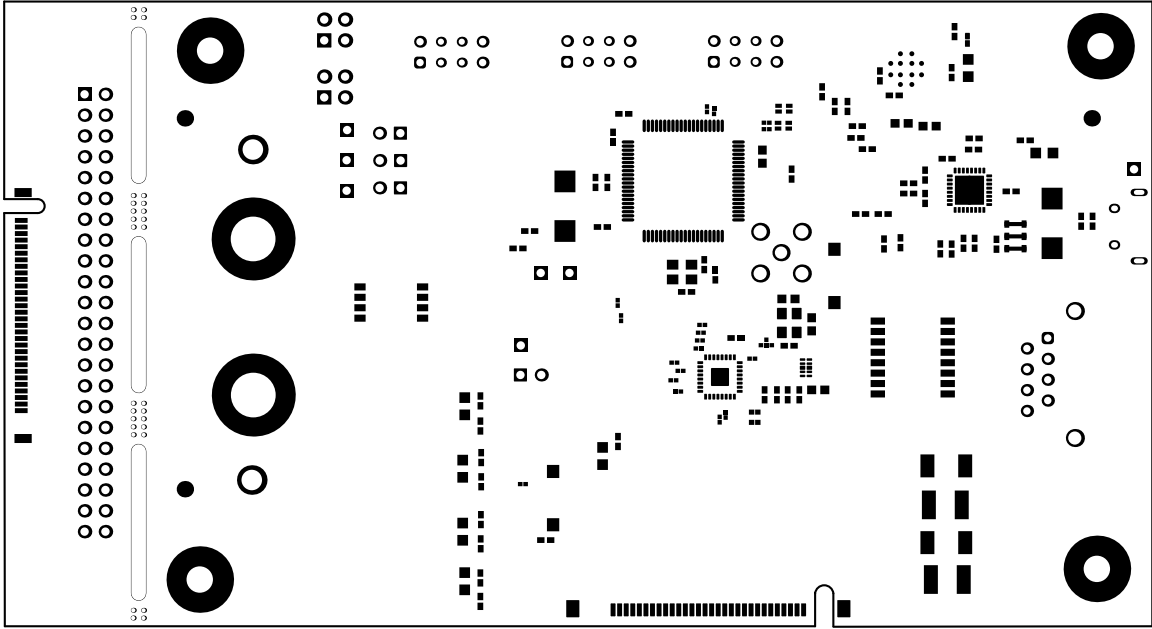
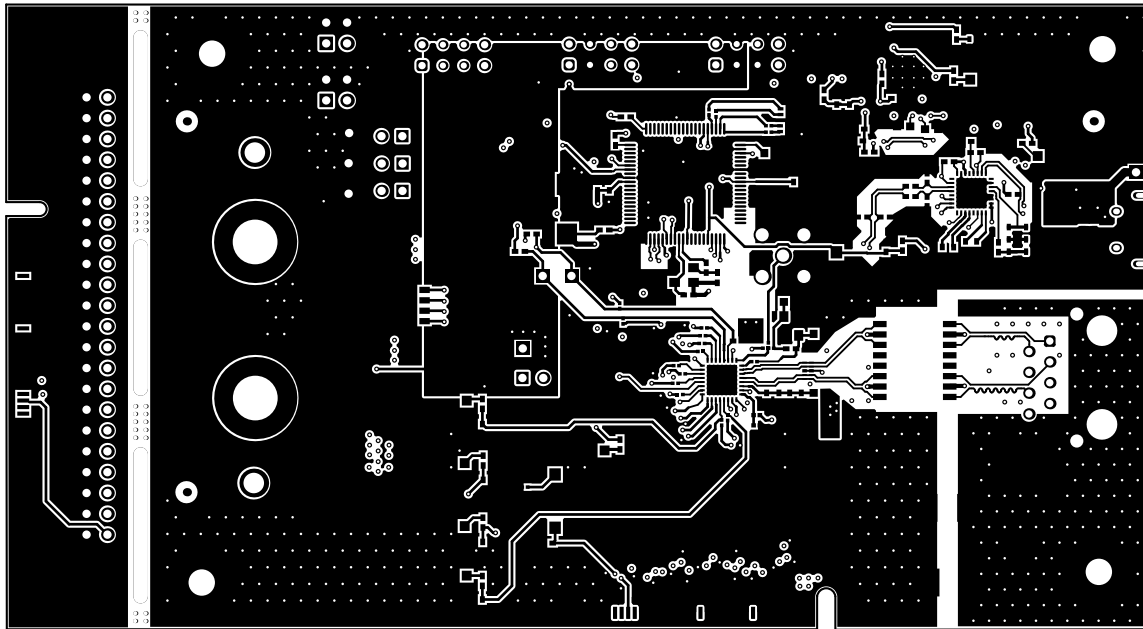


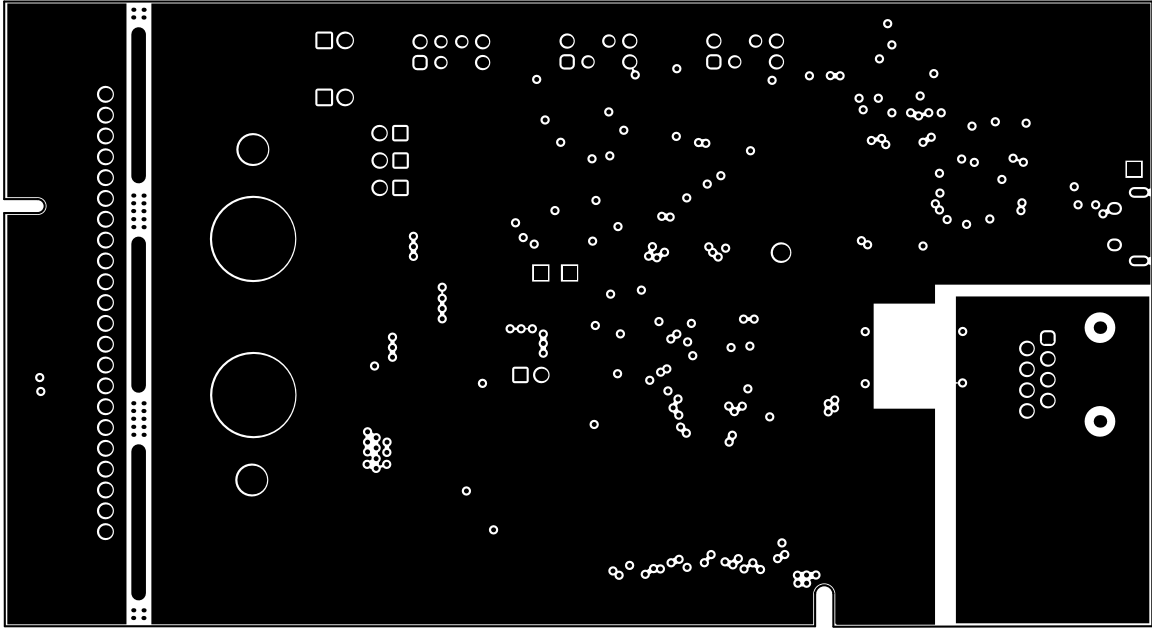
ALL ARTWORK VIEWED FROM TOP SIDE	BOARD #: HSDC077	REV: A	SUN REV: Not In VersionControl
LAYER NAME = Top Overlay	TID #: N/A		
PLOT NAME = Top Overlay	GENERATED : 11/12/2019 10:04:15 PM	TEXAS INSTRUMENTS	



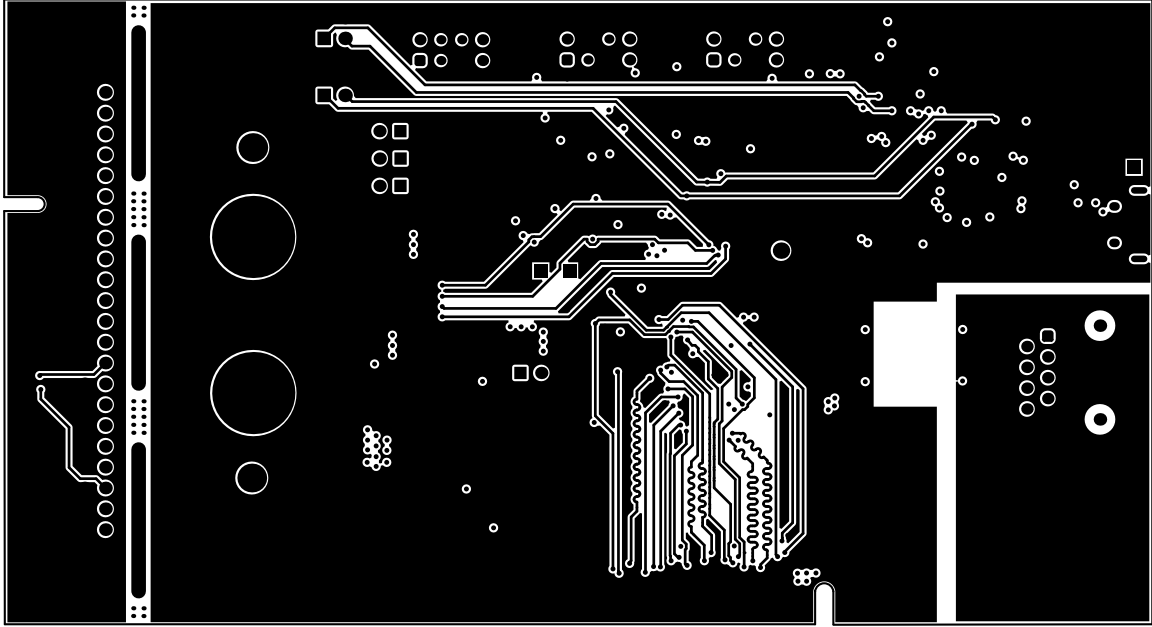
ALL ARTWORK VIEWED FROM TOP SIDE	BOARD #: HSDC077	REV: A	SUN REV: Not In VersionControl
LAYER NAME = Top Solder	TID #: N/A		
PLOT NAME = Top Solder Mask	GENERATED : 11/12/2019 10:04:22 PM		TEXAS INSTRUMENTS



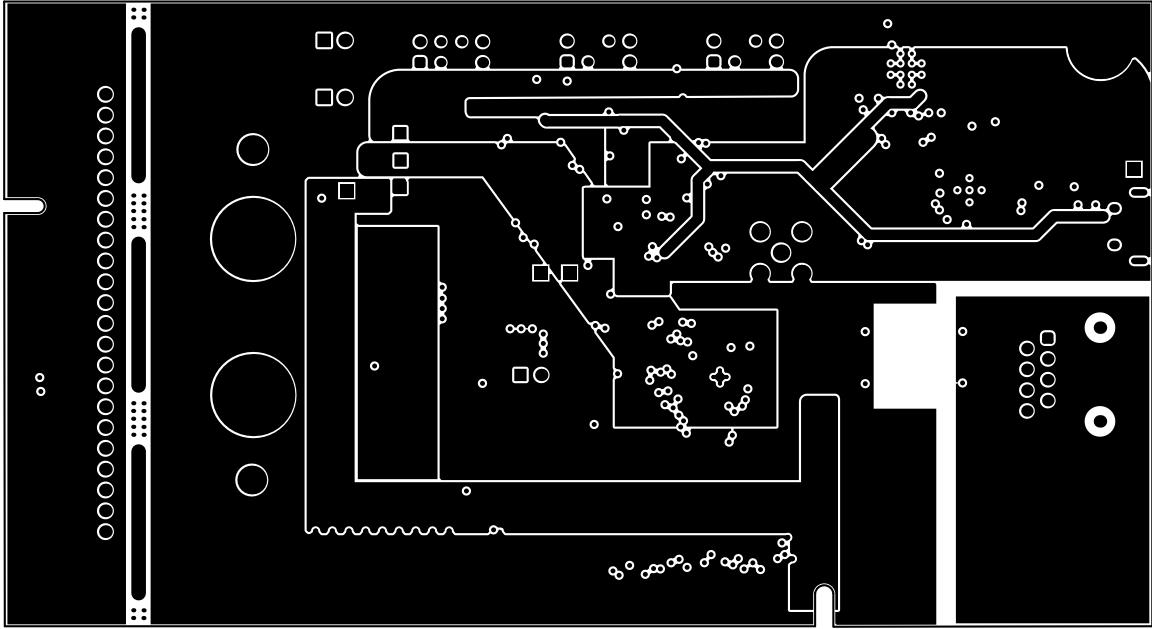
ALL ARTWORK VIEWED FROM TOP SIDE	BOARD #: HSDC077	REV: A	SUN REV: Not In VersionControl
LAYER NAME = Top Layer	TID #: N/A		
PLOT NAME = Top Layer	GENERATED : 11/12/2019 10:04:29 PM		TEXAS INSTRUMENTS



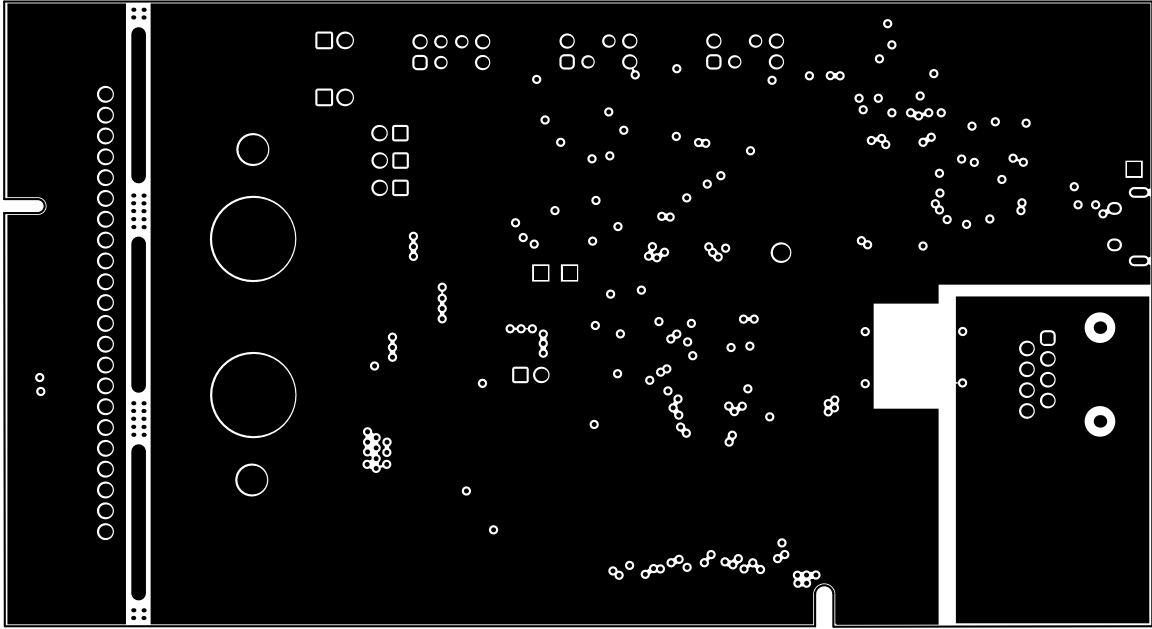
ALL ARTWORK VIEWED FROM TOP SIDE	BOARD #: HSDC077	REV: A	SUN REV: Not In VersionControl
LAYER NAME = GND1	TID #: N/A		
PLOT NAME = Signal 1	GENERATED : 11/12/2019 10:04:37 PM		TEXAS INSTRUMENTS



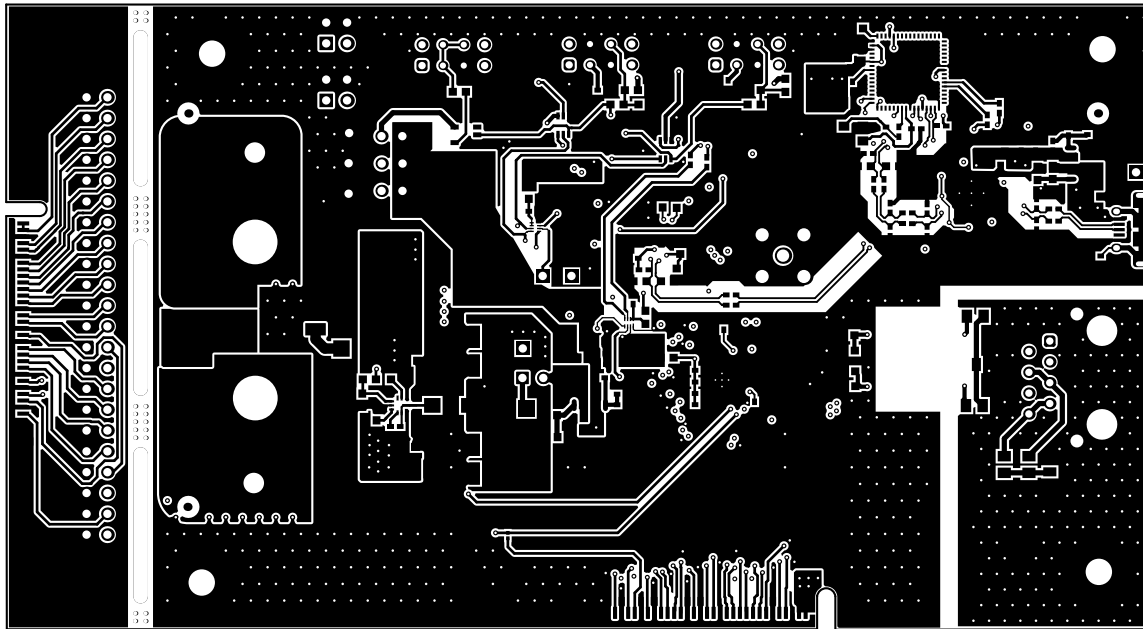
ALL ARTWORK VIEWED FROM TOP SIDE	BOARD #: HSDC077	REV: A	SUN REV: Not In VersionControl
LAYER NAME = Signal1	TID #: N/A		
PLOT NAME = Signal 2	GENERATED : 11/12/2019 10:04:44 PM		TEXAS INSTRUMENTS



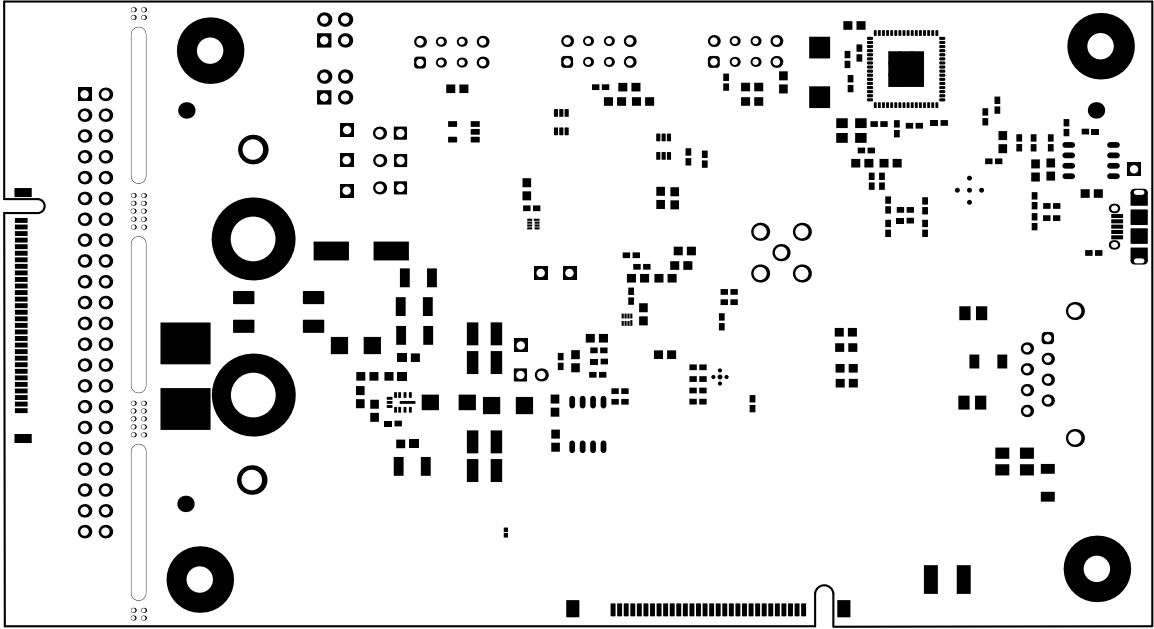
ALL ARTWORK VIEWED FROM TOP SIDE	BOARD #: HSDC077	REV: A	SUN REV: Not In VersionControl
LAYER NAME = Power	TID #: N/A		
PLOT NAME = Signal 3	GENERATED : 11/12/2019 10:04:52 PM		TEXAS INSTRUMENTS



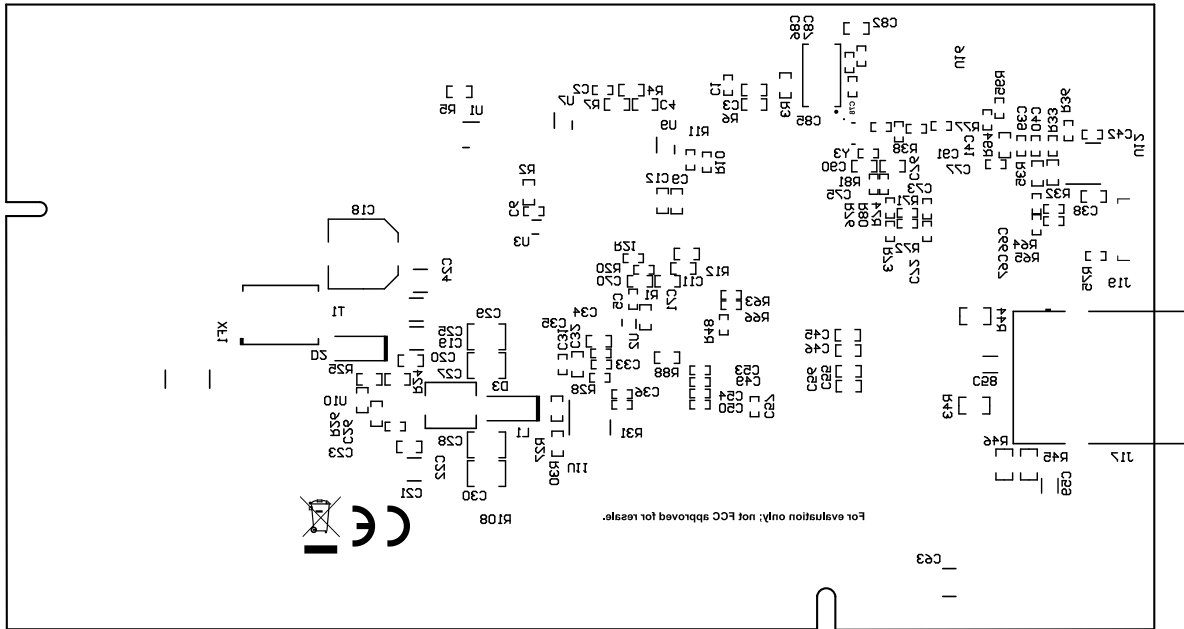
ALL ARTWORK VIEWED FROM TOP SIDE	BOARD #: HSDC077	REV: A	SUN REV: Not In VersionControl
LAYER NAME = GND2	TID #: N/A		
PLOT NAME = Signal 4	GENERATED : 11/12/2019 10:05:00 PM		TEXAS INSTRUMENTS



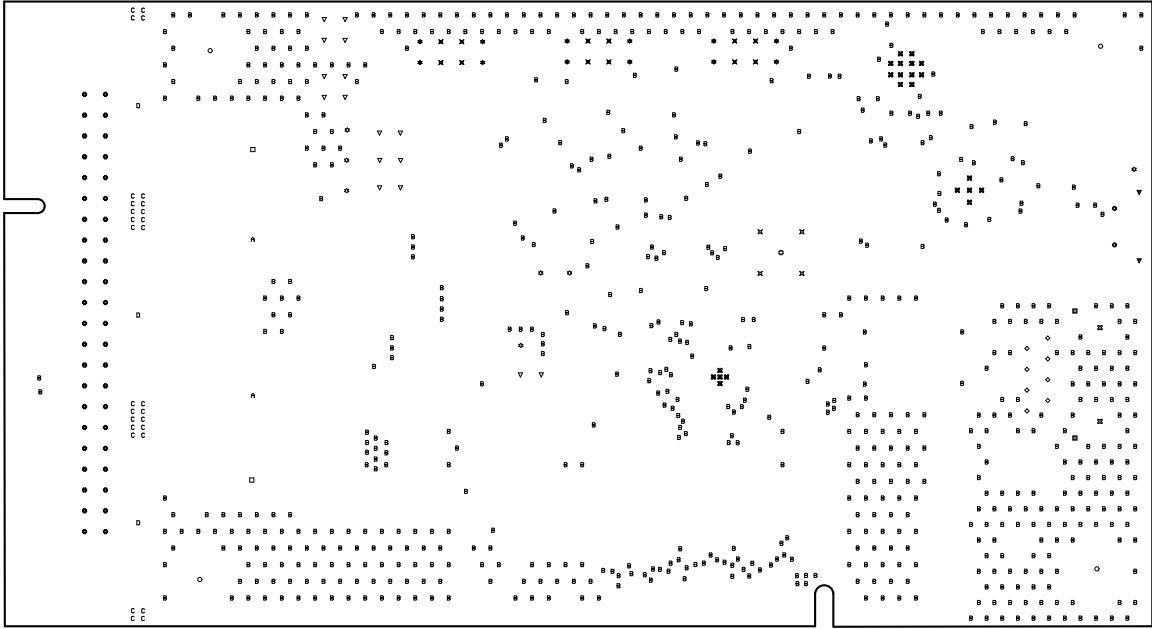
ALL ARTWORK VIEWED FROM TOP SIDE	BOARD #: HSDC077	REV: A	SUN REV: Not In VersionControl
LAYER NAME = Bottom Layer	TID #: N/A		
PLOT NAME = Bottom Layer	GENERATED : 11/12/2019 10:05:07 PM		TEXAS INSTRUMENTS



ALL ARTWORK VIEWED FROM TOP SIDE	BOARD #: HSDC077	REV: A	SUN REV: Not In VersionControl
LAYER NAME = Bottom Solder	TID #: N/A		
PLOT NAME = Bottom Solder Mask	GENERATED : 11/12/2019 10:05:15 PM		TEXAS INSTRUMENTS



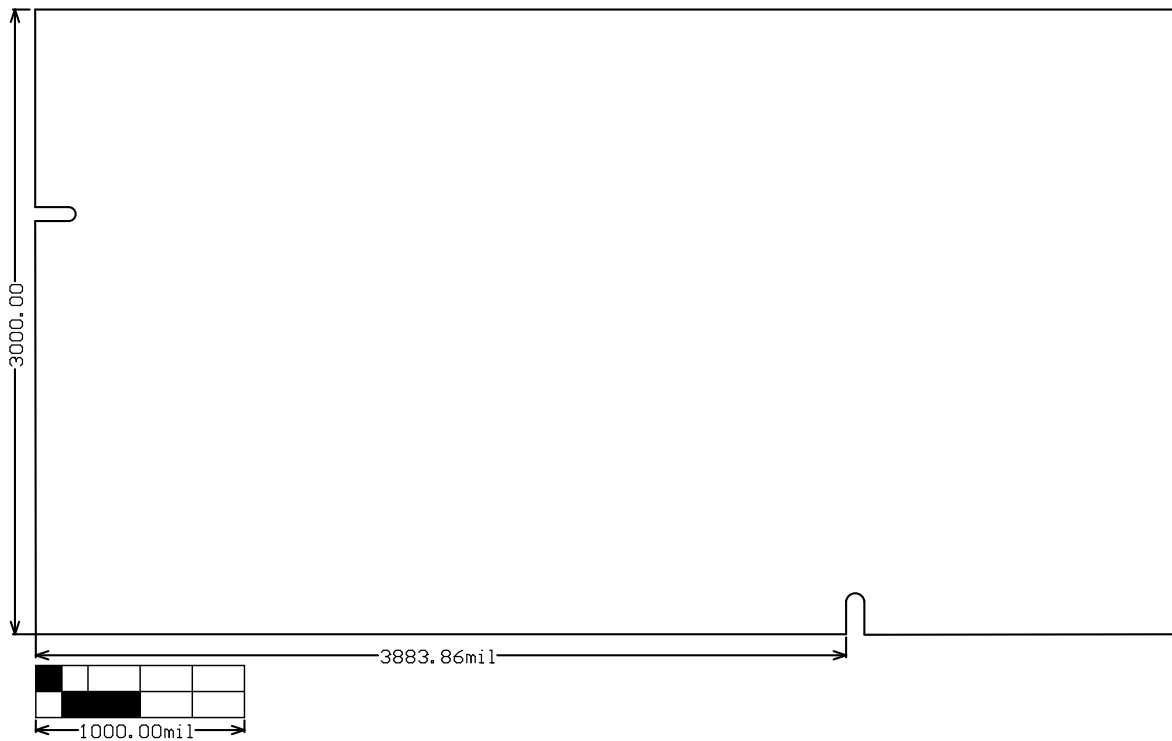
ALL ARTWORK VIEWED FROM TOP SIDE	BOARD #: HSDC077	REV: A	SUN REV: Not In VersionControl
LAYER NAME = Bottom Overlay	TID #: N/A		
PLOT NAME = Bottom Overlay	GENERATED : 11/12/2019 10:05:23 PM	TEXAS INSTRUMENTS	



Symbol	Quantity	Finished Hole Size	Plated	Hole Type	Drill Layer Pair	Hole Tolerance
C	28	20.00mil (0.508mm)	NPTH	Round	Top Layer - Bottom Layer	+/-3.15mil
⊗	2	126.58mil (3.215mm)	NPTH	Round	Top Layer - Bottom Layer	
⊗	22	7.87mil (0.200mm)	PTH	Round	Top Layer - Bottom Layer	
B	685	12.00mil (0.305mm)	PTH	Round	Top Layer - Bottom Layer	
⊗	12	29.53mil (0.750mm)	PTH	Round	Top Layer - Bottom Layer	
◇	8	35.04mil (0.890mm)	PTH	Round	Top Layer - Bottom Layer	
⊗	12	35.43mil (0.900mm)	PTH	Round	Top Layer - Bottom Layer	
⊗	7	39.37mil (1.000mm)	PTH	Round	Top Layer - Bottom Layer	
▽	16	40.00mil (1.016mm)	PTH	Round	Top Layer - Bottom Layer	
⊗	44	40.16mil (1.020mm)	PTH	Round	Top Layer - Bottom Layer	
⊗	1	59.06mil (1.500mm)	PTH	Round	Top Layer - Bottom Layer	+/-3.15mil
⊗	2	61.81mil (1.570mm)	PTH	Round	Top Layer - Bottom Layer	
⊗	4	62.99mil (1.600mm)	PTH	Round	Top Layer - Bottom Layer	
□	2	98.43mil (2.500mm)	PTH	Round	Top Layer - Bottom Layer	
○	4	125.98mil (3.200mm)	PTH	Round	Top Layer - Bottom Layer	
A	2	214.57mil (5.450mm)	PTH	Round	Top Layer - Bottom Layer	
⊗	3	70.00mil (1.778mm)	NPTH	Slot	Top Layer - Bottom Layer	
▽	2	23.62mil (0.600mm)	PTH	Slot	Top Layer - Bottom Layer	
⊗	2	27.56mil (0.700mm)	PTH	Slot	Top Layer - Bottom Layer	
858 Total						

Slot definitions : Routed Path Length = Calculated from tool start centre position to tool end centre position.
Hole Length = Routed Path Length + Tool Size = Slot length as defined in the PCB layout

ALL ARTWORK VIEWED FROM TOP SIDE	BOARD #: HSDC077	REV: A	SUN REV: Not In VersionControl
LAYER NAME = Drill Drawing	TID #: N/A		
PLOT NAME = Drill Drawing	GENERATED : 11/12/2019 10:05:30 PM	TEXAS INSTRUMENTS	



ALL ARTWORK VIEWED FROM TOP SIDE	BOARD #: HSDC077	REV: A	SUN REV: Not In VersionControl
LAYER NAME = M2 Board Dimensions	TID #: N/A		
PLOT NAME = Board Dimensions	GENERATED : 11/12/2019 10:05:39 PM		TEXAS INSTRUMENTS