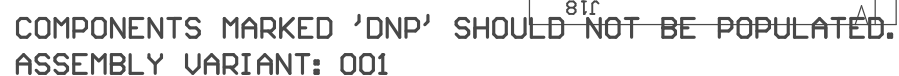
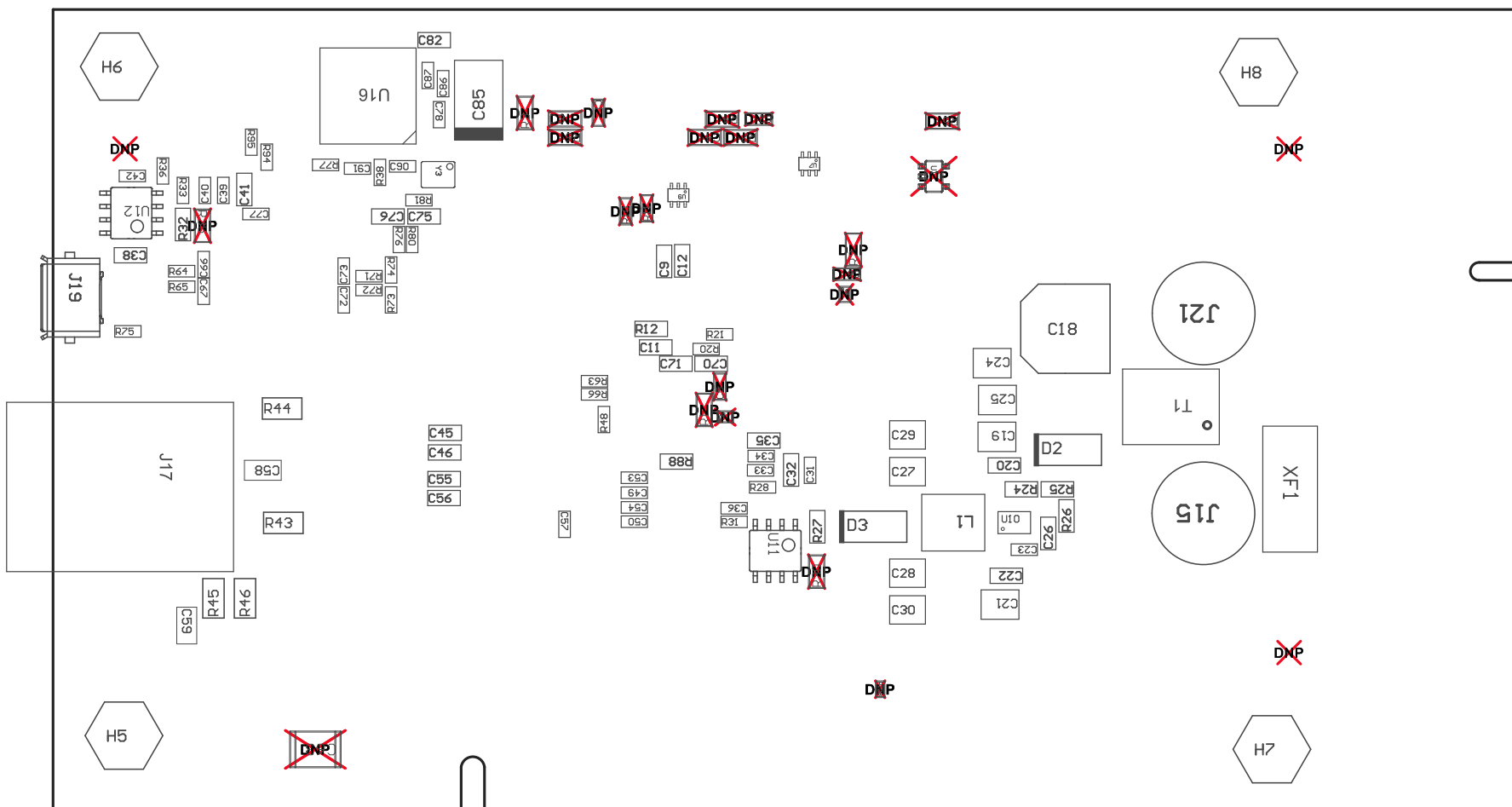


ZZ4 ■ Add F1 fuse into XF1 fuse holder



PCB VIEWED FROM TOP SIDE	BOARD #: HSDC077	REV: A	SUN REV: Not In VersionControl
	TID #: N/A		
PLOT NAME = Top Assembly Drawing	GENERATED : 11/12/2019 9:17:04 PM		TEXAS INSTRUMENTS



COMPONENTS MARKED 'DNP' SHOULD NOT BE POPULATED.

ASSEMBLY VARIANT: 001

PCB VIEWED FROM BOTTOM SIDE	BOARD #: HSDC077	REV: A	SUN REV: Not In VersionControl
	TID #: N/A		
PLOT NAME = Bottom Assembly Drawing	GENERATED : 11/12/2019 9:17:08 PM	TEXAS INSTRUMENTS	