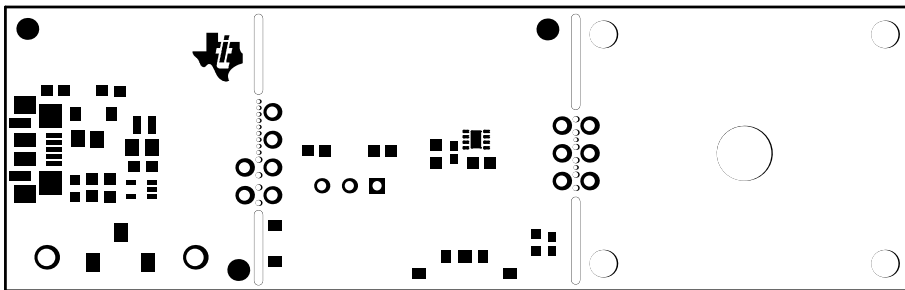
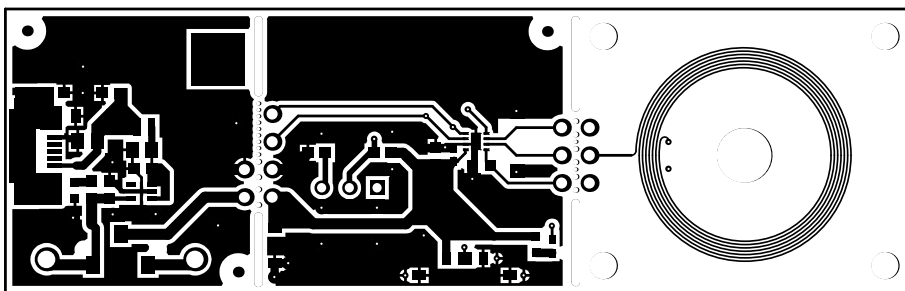


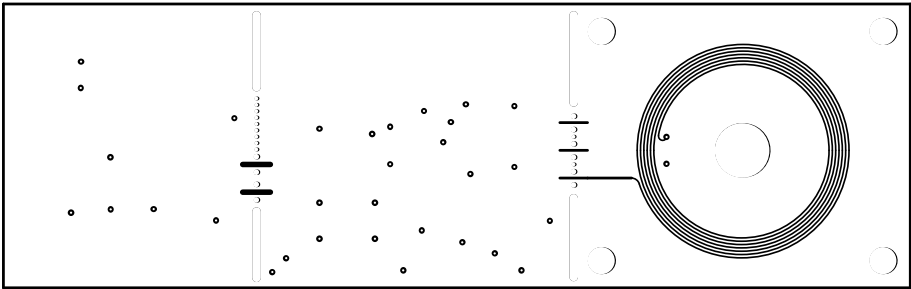
ALL ARTWORK VIEWED FROM TOP SIDE	BOARD #: SU601198	REV: A	SUN REV: Not In VersionControl
LAYER NAME = Top Overlay	TID #: .TID		
PLOT NAME = Top Overlay	GENERATED : 11/11/2015 3:02:12 PM	TEXAS INSTRUMENTS	



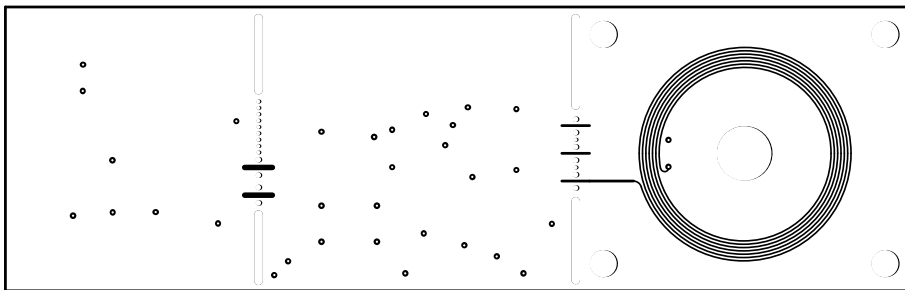
ALL ARTWORK VIEWED FROM TOP SIDE	BOARD #: SU601198	REV: A	SUN REV: Not In VersionControl
LAYER NAME = Top Solder	TID #: .TID		
PLOT NAME = Top Solder Mask	GENERATED : 11/11/2015 3:02:13 PM		TEXAS INSTRUMENTS



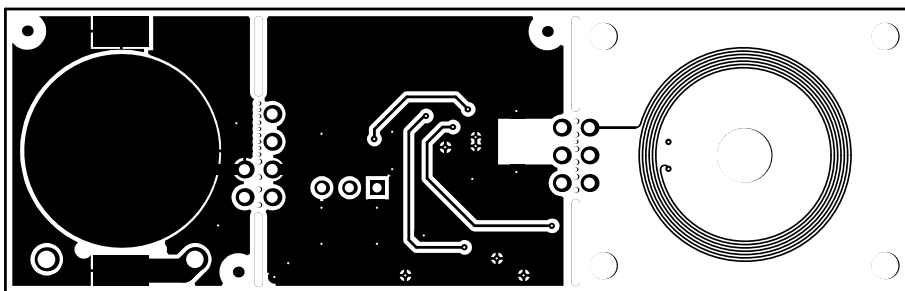
ALL ARTWORK VIEWED FROM TOP SIDE	BOARD #: SU601198	REV: A	SUN REV: Not In VersionControl
LAYER NAME = Top Layer	TID #: .TID		
PLOT NAME = Top Layer	GENERATED : 11/11/2015 3:02:14 PM		TEXAS INSTRUMENTS



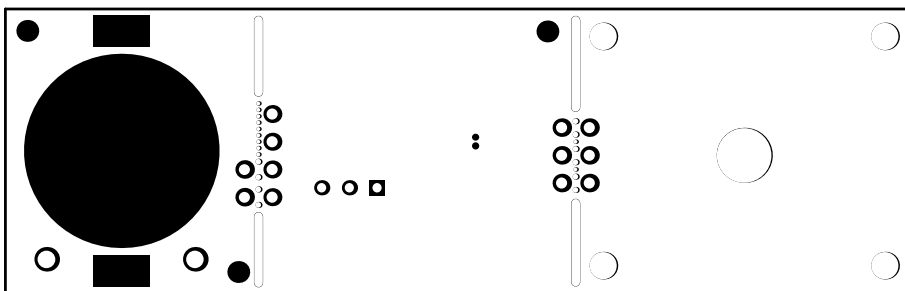
ALL ARTWORK VIEWED FROM TOP SIDE	BOARD #: SU601198	REV: A	SUN REV: Not In VersionControl
LAYER NAME = Signal Layer 1	TID #: .TID		
PLOT NAME = Signal Layer 1	GENERATED : 11/11/2015 3:02:14 PM		TEXAS INSTRUMENTS



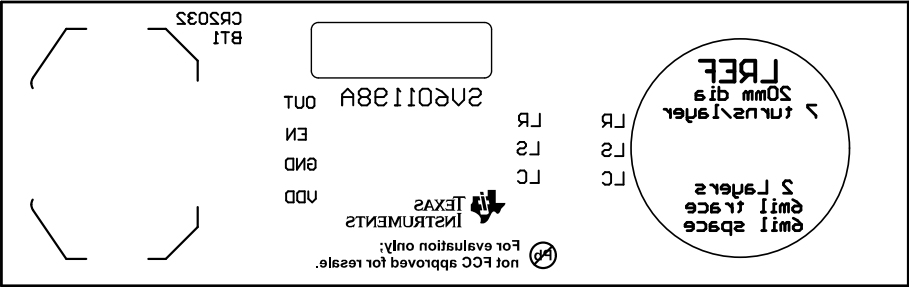
ALL ARTWORK VIEWED FROM TOP SIDE	BOARD #: SU601198	REV: A	SUN REV: Not In VersionControl
LAYER NAME = Signal Layer 2	TID #: .TID		
PLOT NAME = Signal Layer 2	GENERATED : 11/11/2015 3:02:15 PM		TEXAS INSTRUMENTS



ALL ARTWORK VIEWED FROM TOP SIDE	BOARD #: SU601198	REV: A	SUN REV: Not In VersionControl
LAYER NAME = Bottom Layer	TID #: .TID		
PLOT NAME = Bottom Layer	GENERATED : 11/11/2015 3:02:16 PM	TEXAS INSTRUMENTS	

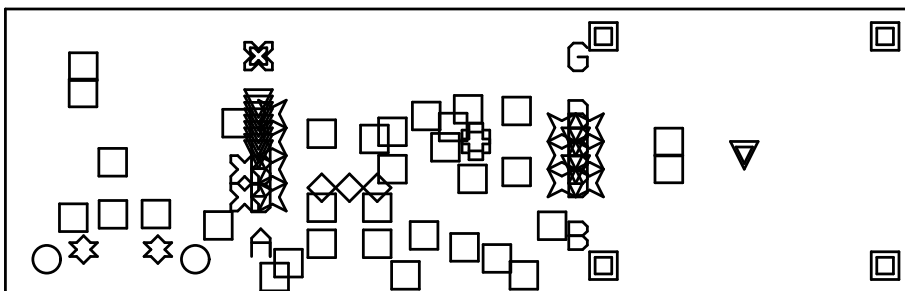


ALL ARTWORK VIEWED FROM TOP SIDE	BOARD #: SU601198	REV: A	SUN REV: Not In VersionControl
LAYER NAME = Bottom Solder	TID #: .TID		
PLOT NAME = Bottom Solder Mask	GENERATED : 11/11/2015 3:02:17 PM		TEXAS INSTRUMENTS

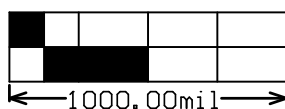
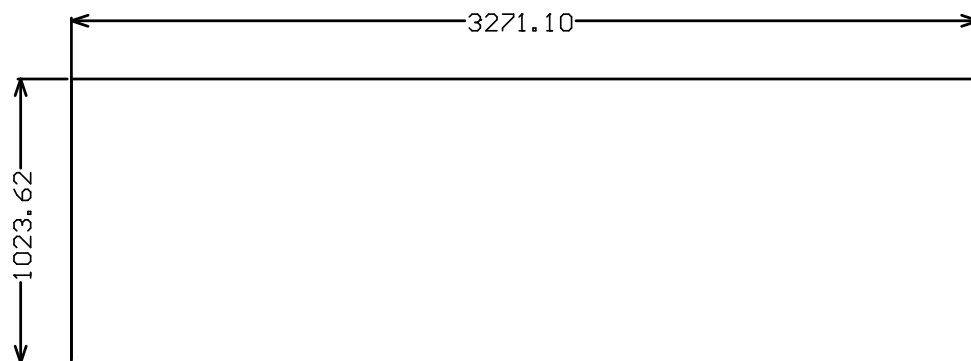


ALL ARTWORK VIEWED FROM TOP SIDE	BOARD #: SU601198	REV: A	SUN REV: Not In VersionControl
LAYER NAME = Bottom Overlay	TID #: .TID		
PLOT NAME = Bottom Overlay	GENERATED : 11/11/2015 3:02:18 PM	TEXAS INSTRUMENTS	

Symbol	Quantity	Finished Hole Size	Plated	Hole Type
▽	11	14.00mil (0.356mm)	NPTH	Round
D	10	20.00mil (0.508mm)	NPTH	Round
☆	2	35.43mil (0.900mm)	NPTH	Round
■	4	98.00mil (2.489mm)	NPTH	Round
▼	1	197.00mil (5.004mm)	NPTH	Round
⌒	1	31.00mil (0.787mm)	NPTH	Slot
⊠	1	31.00mil (0.787mm)	NPTH	Slot
B	1	31.00mil (0.787mm)	NPTH	Slot
G	1	31.00mil (0.787mm)	NPTH	Slot
⊕	2	7.87mil (0.200mm)	PTH	Round
□	33	8.00mil (0.203mm)	PTH	Round
◇	3	33.46mil (0.850mm)	PTH	Round
⊗	2	39.37mil (1.000mm)	PTH	Round
⊗	10	40.00mil (1.016mm)	PTH	Round
○	2	63.00mil (1.600mm)	PTH	Round
	84 Total			



ALL ARTWORK VIEWED FROM TOP SIDE	BOARD #: SU601198	REV: A	SUN REV: Not In VersionControl
LAYER NAME = Drill Drawing	TID #: .TID		
PLOT NAME = Drill Drawing	GENERATED : 11/11/2015 3:02:19 PM	TEXAS INSTRUMENTS	



ALL ARTWORK VIEWED FROM TOP SIDE	BOARD #: SU601198	REV: A	SUN REV: Not In VersionControl
LAYER NAME = M2 Board Dimensions	TID #: .TID		
PLOT NAME = Board Dimensions	GENERATED : 11/11/2015 3:02:20 PM		TEXAS INSTRUMENTS