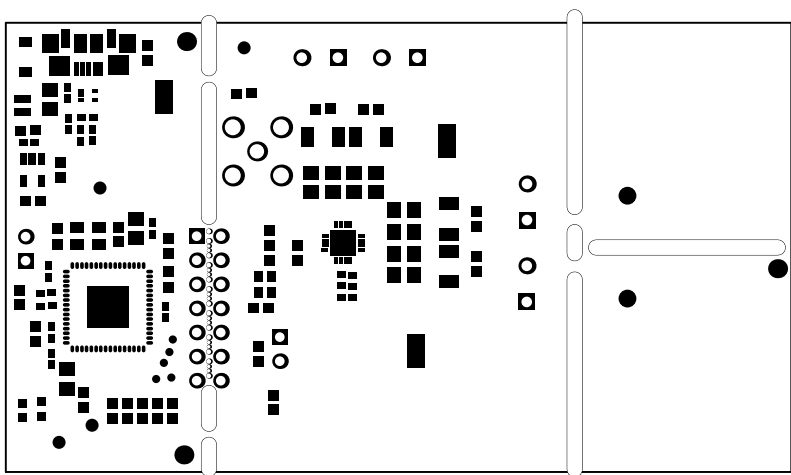
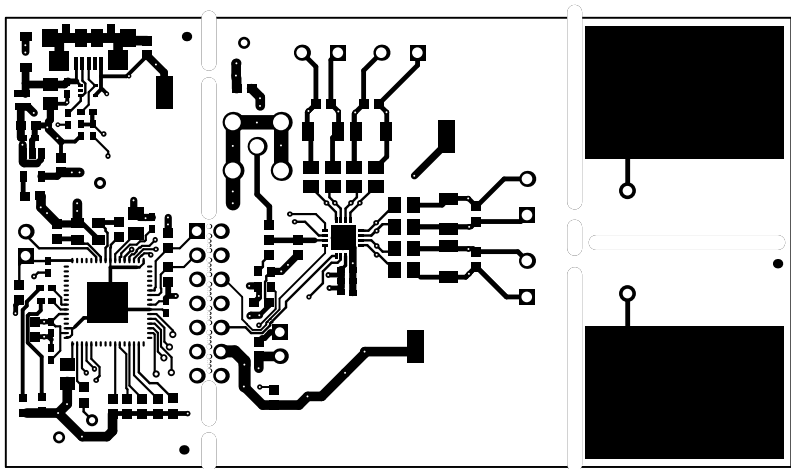


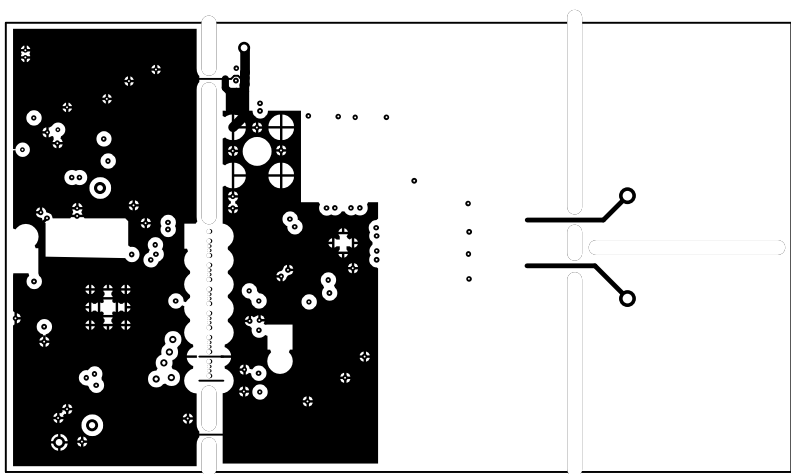
ALL ARTWORK VIEWED FROM TOP SIDE	BOARD #: SU601187	REV: A	SUN REV: Not In VersionControl
LAYER NAME = Top Overlay			
PLOT NAME = Top Overlay	GENERATED : 6/8/2015 3:11:24 PM	TEXAS INSTRUMENTS	



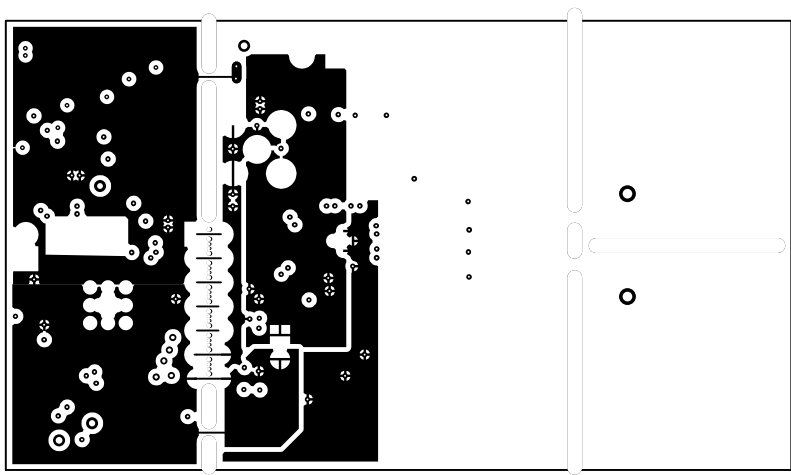
ALL ARTWORK VIEWED FROM TOP SIDE	BOARD #: SU601187	REV: A	SUN REV: Not In VersionControl
LAYER NAME = Top Solder			
PLOT NAME = Top Solder Mask	GENERATED : 6/8/2015 3:11:24 PM	TEXAS INSTRUMENTS	



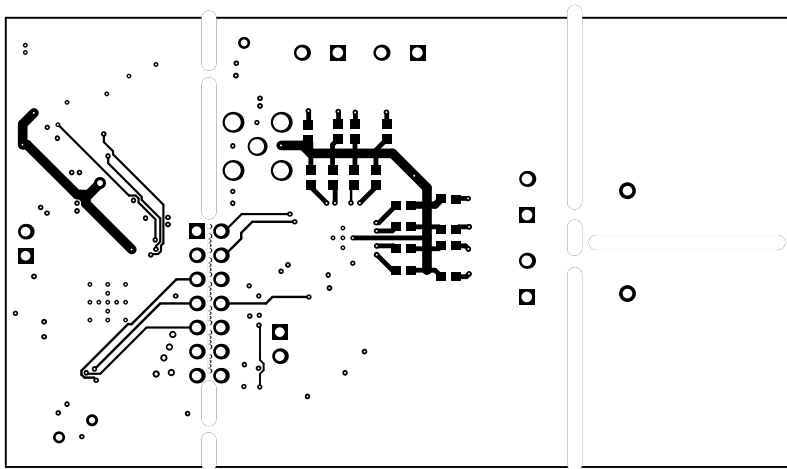
ALL ARTWORK VIEWED FROM TOP SIDE	BOARD #: SU601187	REV: A	SUN REV: Not In VersionControl
LAYER NAME = Top Layer			
PLOT NAME = Top Layer	GENERATED : 6/8/2015 3:11:25 PM	TEXAS INSTRUMENTS	



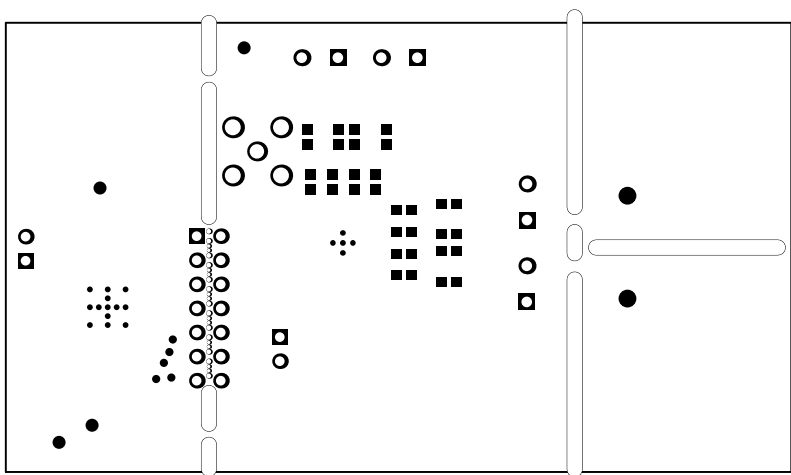
ALL ARTWORK VIEWED FROM TOP SIDE	BOARD #: SU601187	REV: A	SUN REV: Not In VersionControl
LAYER NAME = M1 Board Outline			
PLOT NAME = MidLayer1	GENERATED : 6/8/2015 3:11:25 PM	TEXAS INSTRUMENTS	



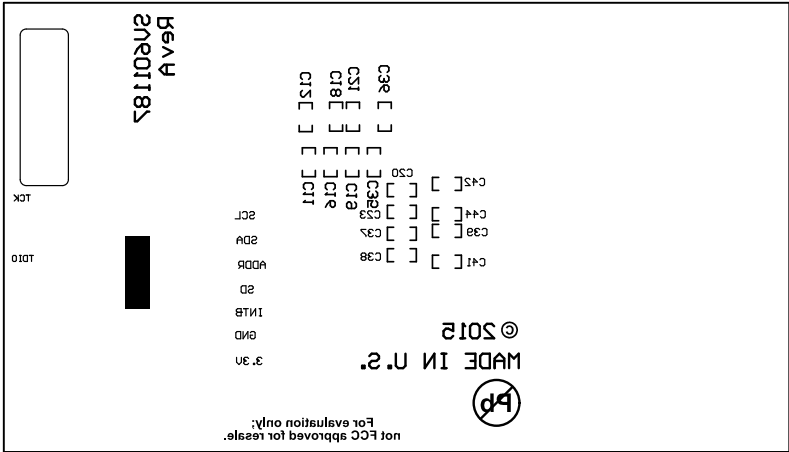
ALL ARTWORK VIEWED FROM TOP SIDE	BOARD #: SU601187	REV: A	SUN REV: Not In VersionControl
LAYER NAME = M1 Board Outline			
PLOT NAME = MidLayer2	GENERATED : 6/8/2015 3:11:26 PM	TEXAS INSTRUMENTS	



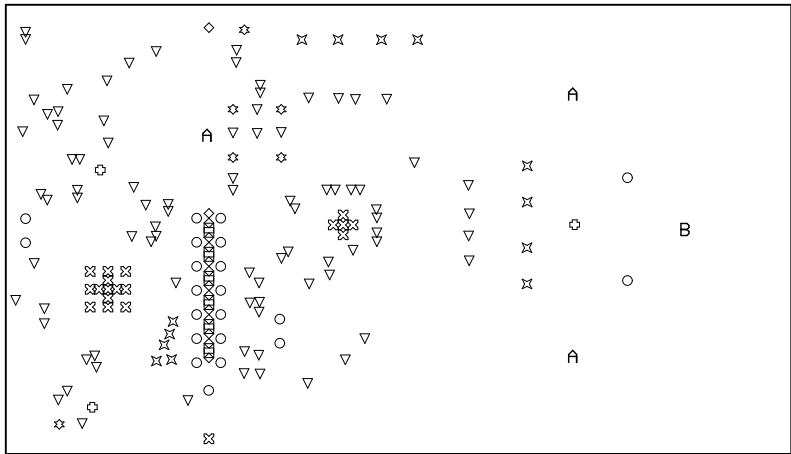
ALL ARTWORK VIEWED FROM TOP SIDE	BOARD #: SU601187	REV: A	SUN REV: Not In VersionControl
LAYER NAME = Bottom Layer			
PLOT NAME = Bottom Layer	GENERATED : 6/8/2015 3:11:26 PM	TEXAS INSTRUMENTS	



ALL ARTWORK VIEWED FROM TOP SIDE	BOARD #: SU601187	REV: A	SUN REV: Not In VersionControl
LAYER NAME = Bottom Solder			
PLOT NAME = Bottom Solder Mask	GENERATED : 6/8/2015 3:11:27 PM	TEXAS INSTRUMENTS	



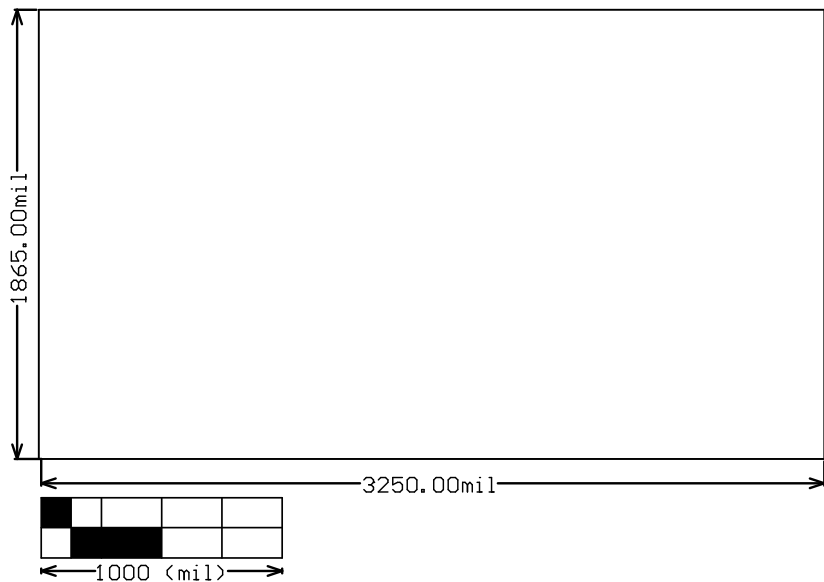
ALL ARTWORK VIEWED FROM TOP SIDE	BOARD #: SU601187	REV: A	SUN REV: Not In VersionControl
LAYER NAME = Bottom Overlay			
PLOT NAME = Bottom Overlay	GENERATED : 6/8/2015 3:11:27 PM	TEXAS INSTRUMENTS	



Symbol	Hit Count	Tool Size	Physical Length	Rout Path Length	Plated	Hole Type
⊗	18	7.874mil (0.2mm)			PTH	Round
▽	85	8mil (0.203mm)			PTH	Round
□	12	14mil (0.356mm)			NPTH	Round
×	5	15mil (0.381mm)			PTH	Round
◇	13	20mil (0.508mm)			NPTH	Round
⊕	2	25mil (0.635mm)			PTH	Round
*	2	28mil (0.711mm)			PTH	Round
○	20	40mil (1.016mm)			PTH	Round
×	8	43.307mil (1.1mm)			PTH	Round
▽	1	59.055mil (1.5mm)			PTH	Round
*	4	66.929mil (1.7mm)			PTH	Round
⊕	1	62mil (1.575mm)	150mil (3.81mm)	88mil (2.235mm)	NPTH	Slot
⊗	1	62mil (1.575mm)	162mil (4.115mm)	100mil (2.54mm)	NPTH	Slot
○	1	62mil (1.575mm)	190mil (4.826mm)	128mil (3.251mm)	NPTH	Slot
◇	1	62mil (1.575mm)	250mil (6.35mm)	188mil (4.775mm)	NPTH	Slot
A	1	62mil (1.575mm)	590mil (14.986mm)	528mil (13.411mm)	NPTH	Slot
B	1	62mil (1.575mm)	815mil (20.701mm)	753mil (19.126mm)	NPTH	Slot
A	2	62mil (1.575mm)	850mil (21.59mm)	788mil (20.015mm)	NPTH	Slot
	178 Total					

Slot definitions : Rout Path Length = Calculated from tool start centre position to tool end centre position.
Physical Length = Rout Path Length + Tool Size = Slot length as defined in the PCB layout

ALL ARTWORK VIEWED FROM TOP SIDE	BOARD #: SU601187	REV: A	SUN REV: Not In VersionControl
LAYER NAME = Drill Drawing			
PLOT NAME = Drill Drawing	GENERATED : 6/8/2015 3:11:28 PM	TEXAS INSTRUMENTS	



ALL ARTWORK VIEWED FROM TOP SIDE	BOARD #: SU601187	REV: A	SUN REV: Not In VersionControl
LAYER NAME = M2 Board Dimensions			
PLOT NAME = Board Dimensions	GENERATED : 6/8/2015 3:11:28 PM	TEXAS INSTRUMENTS	