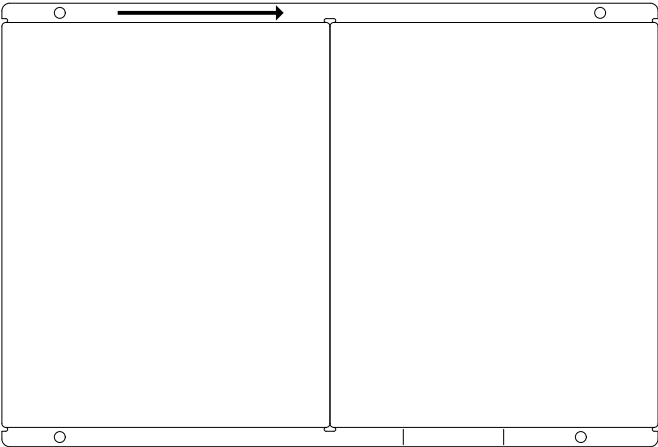
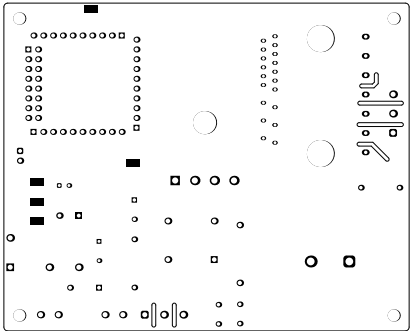


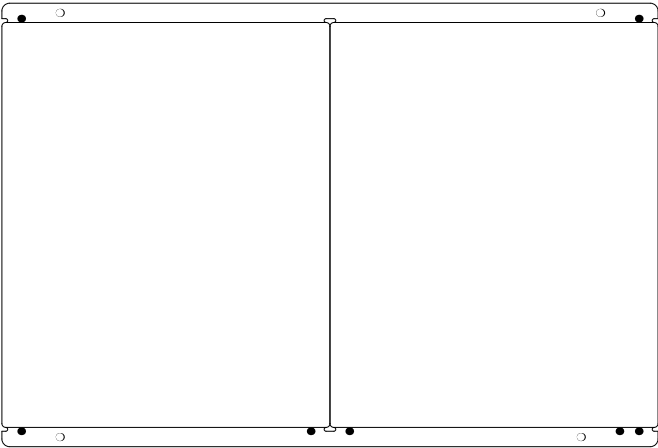
ALL ARTWORK VIEWED FROM TOP SIDE	BOARD #: MCUI54	REV: E1	SUN REV: Not in version control
LAYER NAME = Top Overlay	TID #: TIDA-010265		
PLOT NAME = Top Overlay	GENERATED : 9/30/2024 1:34:51 PM	TEXAS INSTRUMENTS	

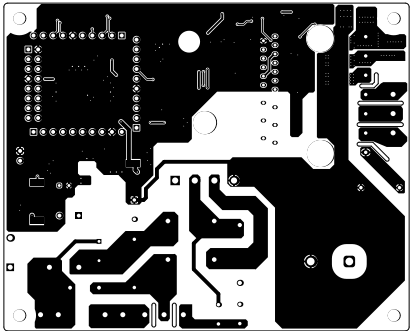


拼板

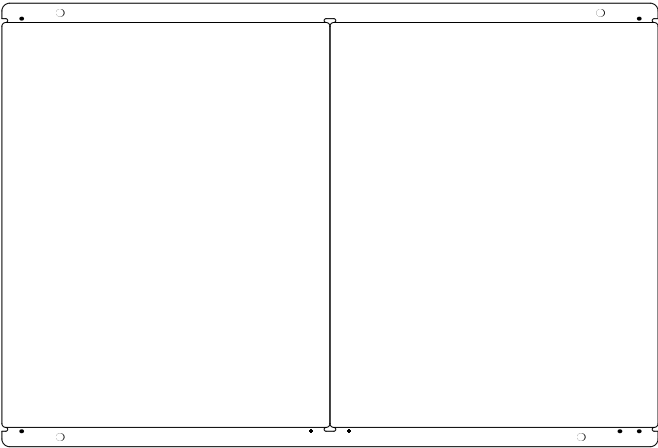


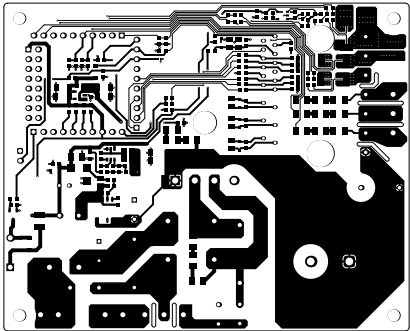
ALL ARTWORK VIEWED FROM TOP SIDE	BOARD #: MCUI54	REV: E1	SUN REV: Not in version control
LAYER NAME = Top Solder	TID #: TIDA-010265		
PLOT NAME = Top Solder Mask	GENERATED : 9/30/2024 1:34:51 PM	TEXAS INSTRUMENTS	



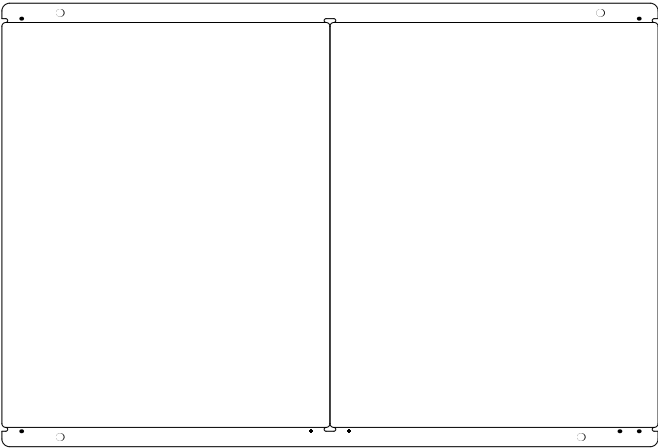


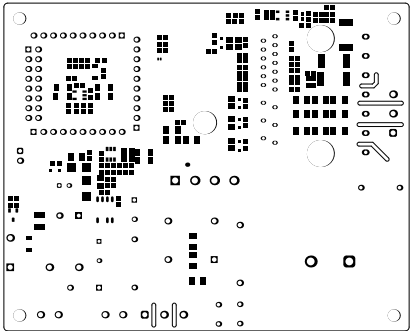
ALL ARTWORK VIEWED FROM TOP SIDE	BOARD #: MCUI54	REV: E1	SUN REV: Not in version control
LAYER NAME = Top Layer	TID #: TIDA-010265		
PLOT NAME = Top Layer	GENERATED : 9/30/2024 1:34:51 PM	TEXAS INSTRUMENTS	



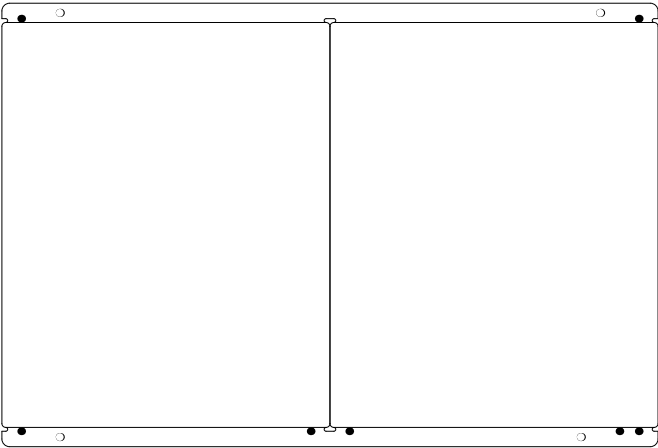


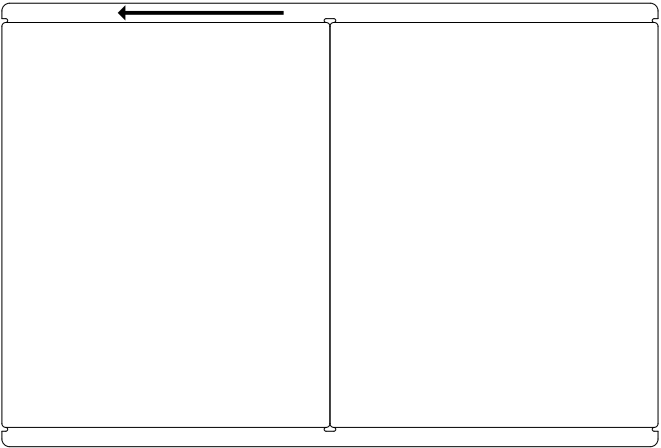
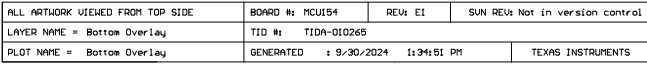
ALL ARTWORK VIEWED FROM TOP SIDE	BOARD #: MCUI54	REV: E1	SUN REV: Not in version control
LAYER NAME = Bottom Layer	TID #: TIDA-010265		
PLOT NAME = Bottom Layer	GENERATED : 9/30/2024 1:34:51 PM	TEXAS INSTRUMENTS	



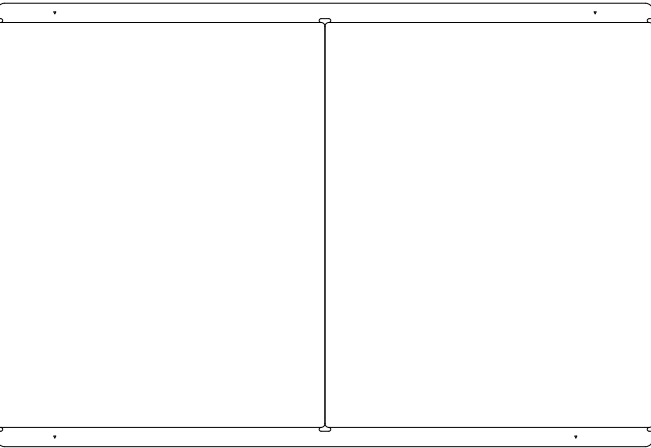
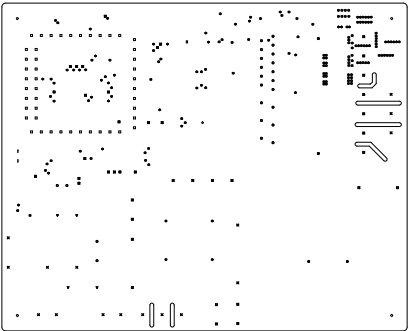


ALL ARTWORK VIEWED FROM TOP SIDE	BOARD #: MCUI54	REV: E1	SUN REV: Not in version control
LAYER NAME = Bottom Solder	TID #: TIDA-010265		
PLOT NAME = Bottom Solder Mask	GENERATED : 9/30/2024 1:34:51 PM	TEXAS INSTRUMENTS	

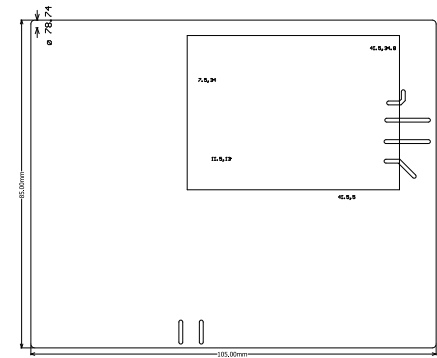




Symbol	Count	Hole Size	Plated	Hole Type	Drill Layer Pair	Via/Pad	Pad Shape	Template
D	1	3.200mm (125.98mil)	NPTH	Round	Top Layer - Bottom Layer	Pad	Rounded	c0hn320
◇	1	6.000mm (236.22mil)	NPTH	Round	Top Layer - Bottom Layer	Pad	Rounded	c600hn600m600p-1
I	2	1.016mm (40.00mil)	PTH	Round	Top Layer - Bottom Layer	Pad	<Mixed>	<Mixed>
✕	2	1.100mm (43.31mil)	PTH	Round	Top Layer - Bottom Layer	Pad	Rounded	c160hi10
✱	2	2.000mm (78.74mil)	PTH	Round	Top Layer - Bottom Layer	Pad	<Mixed>	<Mixed>
⊗	2	7.000mm (275.59mil)	NPTH	Round	Top Layer - Bottom Layer	Pad	Rounded	c700hn700m700p-1
▽	4	1.000mm (39.37mil)	PTH	Round	Top Layer - Bottom Layer	Pad	<Mixed>	<Mixed>
⊙	4	1.200mm (47.24mil)	PTH	Round	Top Layer - Bottom Layer	Pad	<Mixed>	<Mixed>
⊗	4	1.600mm (62.99mil)	PTH	Round	Top Layer - Bottom Layer	Pad	<Mixed>	<Mixed>
▽	4	2.000mm (78.74mil)	NPTH	Round	Top Layer - Bottom Layer	Pad	Rounded	c200hn200
○	4	3.150mm (124.02mil)	NPTH	Round	Top Layer - Bottom Layer	Pad	Rounded	c315hn315m315p-1
✕	14	1.300mm (51.18mil)	PTH	Round	Top Layer - Bottom Layer	Pad	<Mixed>	<Mixed>
⊗	17	0.900mm (35.43mil)	PTH	Round	Top Layer - Bottom Layer	Pad	<Mixed>	<Mixed>
✱	20	0.300mm (11.81mil)	PTH	Round	Top Layer - Bottom Layer	Via	Rounded	v50h30m0m0
◇	23	0.750mm (29.53mil)	PTH	Round	Top Layer - Bottom Layer	Pad	<Mixed>	<Mixed>
□	46	1.020mm (40.16mil)	PTH	Round	Top Layer - Bottom Layer	Pad	<Mixed>	<Mixed>
✕	167	0.200mm (7.87mil)	PTH	Round	Top Layer - Bottom Layer	Via	Rounded	<Mixed>
317 Total								



ALL ARTWORK VIEWED FROM TOP SIDE	BOARD #: MCUI54	REV: E1	SUN REV: Not in version control
LAYER NAME = Drill Drawing	TID #: TIDA-010265		
PLOT NAME = Drill Drawing	GENERATED : 9/30/2024 1:34:52 PM	TEXAS INSTRUMENTS	



ALL ARTWORK VIEWED FROM TOP SIDE	BOARD #: MCUI54	REV: E1	SUN REV: Not in version control
LAYER NAME = M2 Board Dimensions	TID #: TIDA-010265		
PLOT NAME = Board Dimensions	GENERATED : 9/30/2024 1:34:52 PM	TEXAS INSTRUMENTS	

