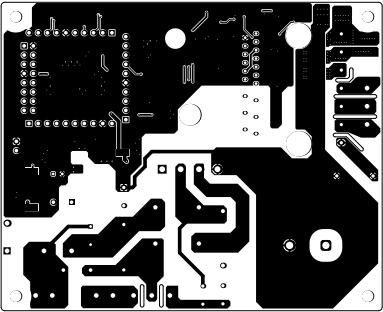
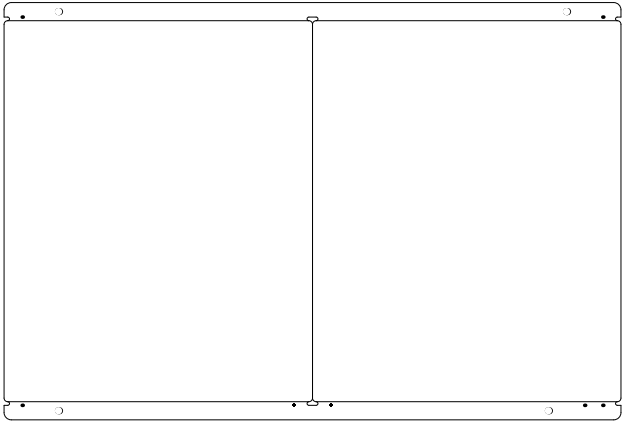
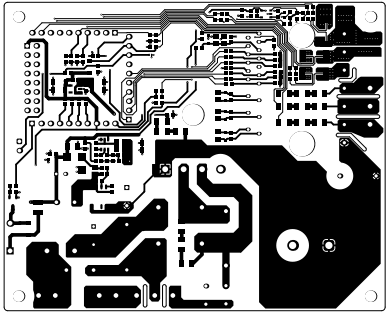


ALL artwork VIEWED FROM TOP SIDE	BOARD #:	NCU154	REV:	E1	SUN REV: Not in version control
LAYER NAME = Top Solder	TID #:	TIDA-010265			
PLOT NAME = Top Solder Mask	GENERATED	t: 9/30/2024	11:35:58 PM	TEXAS INSTRUMENTS	

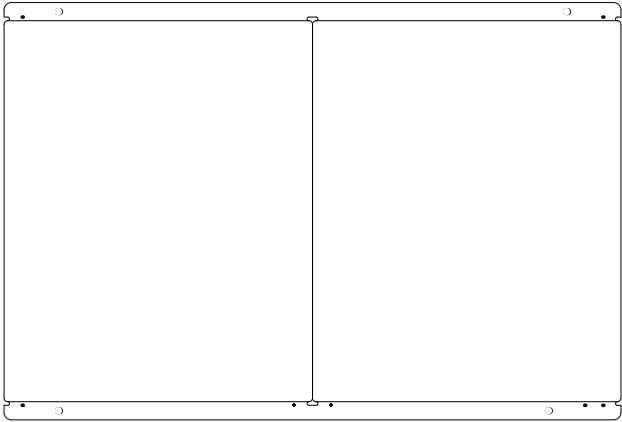


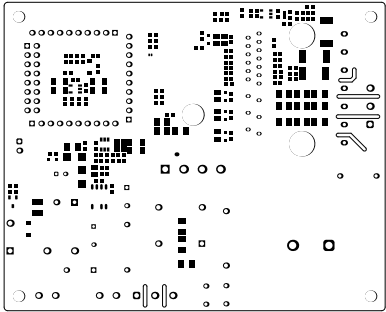
ALL ARTWORK VIEWED FROM TOP SIDE	BOARD #:	MCU154	REV:	E1	SUN REV:	Not in version control
LAYER NAME = Top Layer	TID #:	TIDA-010265				
PLOT NAME = Top Layer	GENERATED	t: 9/30/2024 11:35:59 PM		TEXAS INSTRUMENTS		



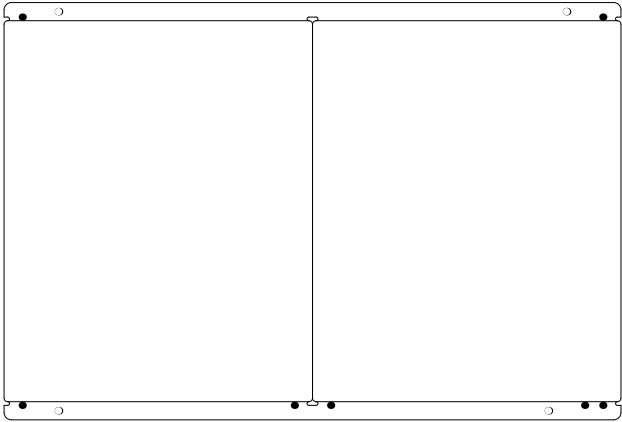


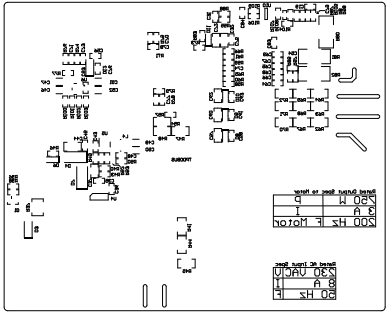
ALL ARTWORK VIEWED FROM TOP SIDE	BOARD #: NCU154	REV: E1	SUN REV: Not in version control
LAYER NAME = Bottom Layer	TID #: TIDA-010265		
PLOT NAME = Bottom Layer	GENERATED : 9/30/2024 11:36:59 PM	TEXAS INSTRUMENTS	



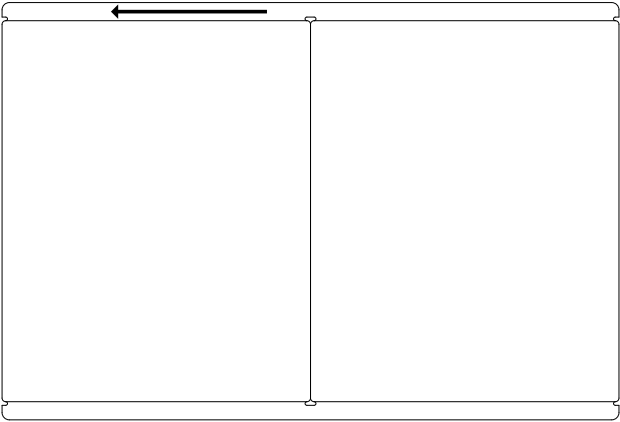


ALL ARTWORK VIEWED FROM TOP SIDE	BOARD #:	NCU154	REV:	E1	SUN REV:	Not in version control
LAYER NAME = Bottom Solder	TID #:	TID#-010265				
PLOT NAME = Bottom Solder Mask	GENERATED	t: 9/30/2024 11:36:59 PM		TEXAS INSTRUMENTS		

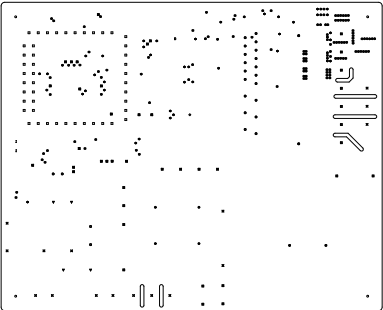




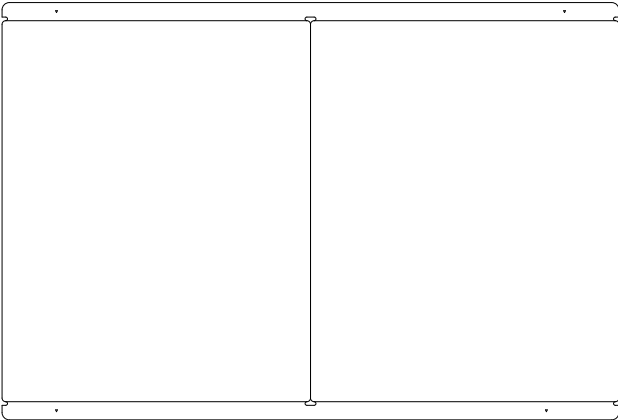
ALL ARTWORK VIEWED FROM TOP SIDE	BOARD #: NCU154	REV: E1	SUN REV: Not in version control
LAYER NAME = Bottom Overlay	TID #: TIDA-010265		
PLOT NAME = Bottom Overlay	GENERATED : 9/30/2024 11:35:59 PM		TEXAS INSTRUMENTS

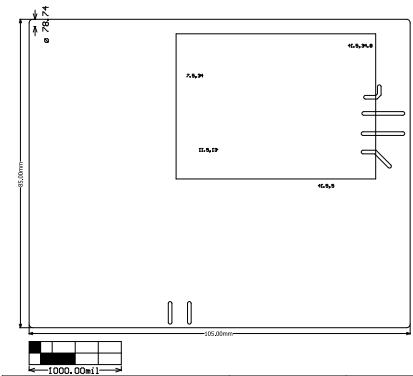


Symbol	Count	Hole Size	Plated	Hole Type	Drill Layer Pair	Uia/Pad	Pad Shape	Template
D	1	3.200mm (125.99mil)	NPTH	Round	Top Layer - Bottom Layer	Pad	Rounded	c0h320
⊖	1	6.000mm (236.22mil)	NPTH	Round	Top Layer - Bottom Layer	Pad	Rounded	c600h600w600p-1
I	2	1.016mm (40.00mil)	PTH	Round	Top Layer - Bottom Layer	Pad	(Mixed)	(Mixed)
✕	2	1.100mm (43.31mil)	PTH	Round	Top Layer - Bottom Layer	Pad	Rounded	c160h110
✱	2	2.000mm (78.74mil)	PTH	Round	Top Layer - Bottom Layer	Pad	(Mixed)	(Mixed)
⊙	2	7.000mm (275.59mil)	NPTH	Round	Top Layer - Bottom Layer	Pad	Rounded	c700h700w700p-1
V	4	1.000mm (39.37mil)	PTH	Round	Top Layer - Bottom Layer	Pad	(Mixed)	(Mixed)
⊙	4	1.200mm (47.24mil)	PTH	Round	Top Layer - Bottom Layer	Pad	(Mixed)	(Mixed)
⊗	4	1.600mm (62.99mil)	PTH	Round	Top Layer - Bottom Layer	Pad	(Mixed)	(Mixed)
∇	4	2.000mm (78.74mil)	NPTH	Round	Top Layer - Bottom Layer	Pad	Rounded	c200h200
○	4	3.150mm (124.02mil)	NPTH	Round	Top Layer - Bottom Layer	Pad	Rounded	c315h315w315p-1
✕	14	1.300mm (51.18mil)	PTH	Round	Top Layer - Bottom Layer	Pad	(Mixed)	(Mixed)
⊗	17	0.900mm (35.43mil)	PTH	Round	Top Layer - Bottom Layer	Pad	(Mixed)	(Mixed)
⊗	20	0.900mm (11.81mil)	PTH	Round	Top Layer - Bottom Layer	Via	Rounded	v50h30w0mx0
○	23	0.750mm (29.53mil)	PTH	Round	Top Layer - Bottom Layer	Pad	(Mixed)	(Mixed)
□	46	1.020mm (40.16mil)	PTH	Round	Top Layer - Bottom Layer	Pad	(Mixed)	(Mixed)
⊖	167	0.200mm (7.87mil)	PTH	Round	Top Layer - Bottom Layer	Via	Rounded	(Mixed)
367 Total								



ALL ARTWORK VIEWED FROM TOP SIDE	BOARD #: MCU154	REV: E1	SUN REV: Not in version control
LAYER NAME = Drill Drawing	TID #: TIDA-010265		
PLOT NAME = Drill Drawing	GENERATED: 1/9/30/2024 11:36:00 PM	TEXAS INSTRUMENTS	





ALL ARTWORK VIEWED FROM TOP SIDE	BOARD #: NCU154	REV: E1	SUN REV: Not in version control
LAYER NAME = P2 Board Dimensions	TID #: TIDA-010265		
PLOT NAME = Board Dimensions	GENERATED: 1 9/30/2024 11:36:00 PM	TEXAS INSTRUMENTS	

