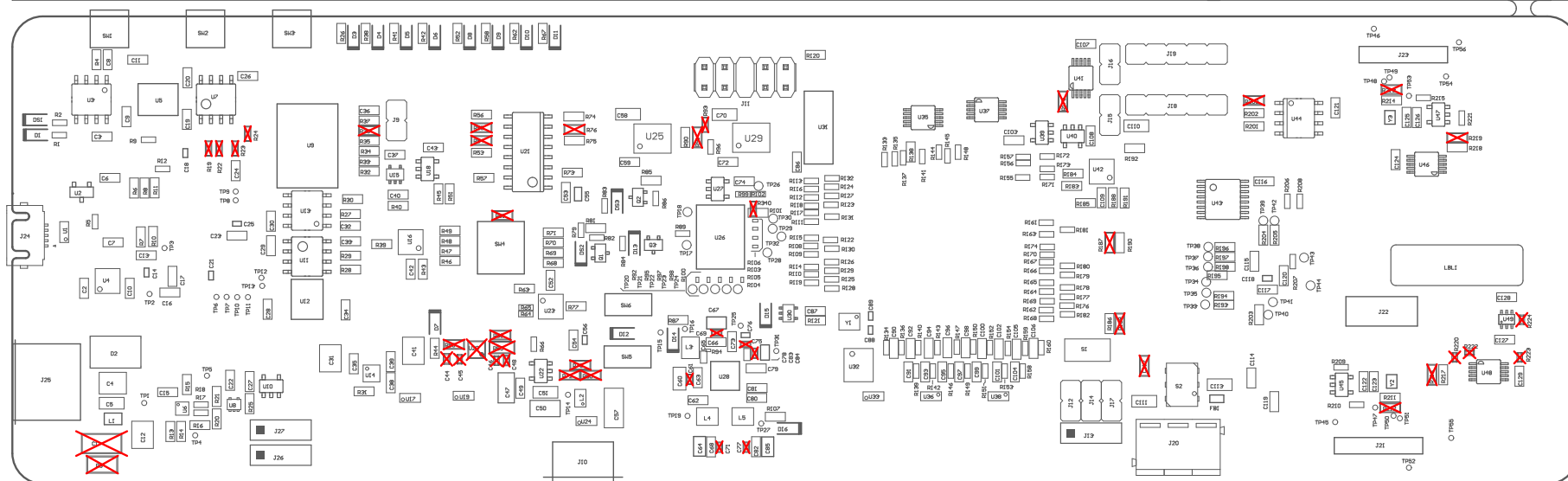
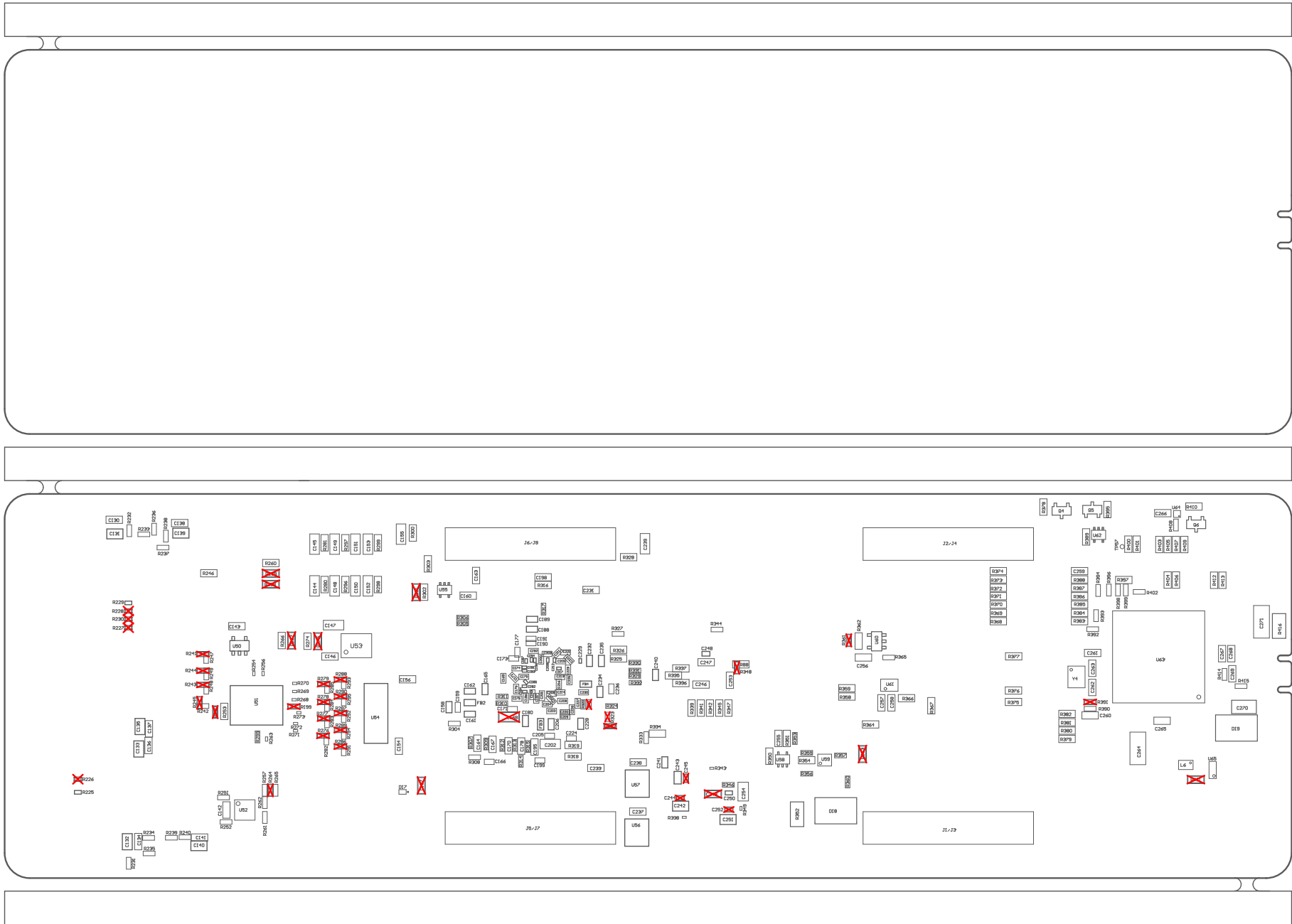


- 224 Install label in silkscreened box after final wash. Text shall be 8 pt font. Text shall be per the Label Table in the PDF schematic.
- 223 These assemblies are ESD sensitive, ESD precautions shall be observed.
- 222 These assemblies must be clean and free from flux and all contaminants. Use of no clean flux is not acceptable.
- 221 These assemblies must comply with workmanship standards IPC-A-610 Class 2, unless otherwise specified.



COMPONENTS MARKED 'DNP' SHOULD NOT BE POPULATED.
ASSEMBLY VARIANT: 001

PCB VIEWED FROM TOP SIDE	BOARD #: PROC193	REV: E1	SUN REV: Not in version control
	TID #: N/A		
PLOT NAME = Top Assembly Drawing	GENERATED : 22-05-2024 17:33:10	TEXAS INSTRUMENTS	



PCB VIEWED FROM BOTTOM SIDE	BOARD #: PROC193	REV: E1	SUN REV: Not in version control
	TID #: N/A		
PLOT NAME = Bottom Assembly Drawing	GENERATED : 22-05-2024 17:33:10	TEXAS INSTRUMENTS	