

4

3

2

1

REVISIONS			
REV	DESCRIPTION	DATE	APPROVED
1.3A	PRODUCTION RELEASE	12-31-2015	

DRILL CHART: TOP to BOTTOM				
ALL UNITS ARE IN MILS				
FIGURE	SIZE	TOLERANCE	PLATED	QTY
.	8.0	+2.0/-2.0	PLATED	761
.	10.0	+2.0/-2.0	PLATED	1562
.	30.0	+3.0/-3.0	PLATED	2
.	33.0	+3.0/-3.0	PLATED	60
.	35.04	+3.0/-3.0	PLATED	52
.	36.0	+3.0/-3.0	PLATED	4
.	40.0	+3.0/-3.0	PLATED	95
.	43.0	+3.0/-3.0	PLATED	2
.	45.0	+3.0/-3.0	PLATED	28
.	50.0	+3.0/-3.0	PLATED	6
.	67.0	+3.0/-3.0	PLATED	12
.	69.0	+3.0/-3.0	PLATED	2
Ø	79.0	+3.0/-3.0	PLATED	2
H	91.0	+3.0/-3.0	PLATED	2
⊙	120.0	+3.0/-3.0	PLATED	4
⊙	140.0	+3.0/-3.0	PLATED	1
.	33.46	+2.0/-2.0	NON-PLATED	2
⊙	47.0	+2.0/-2.0	NON-PLATED	2
.	59.0	+2.0/-2.0	NON-PLATED	2
.	68.9	+2.0/-2.0	NON-PLATED	2
⊕	125.98	+2.0/-2.0	NON-PLATED	12
⊙	138.0	+2.0/-2.0	NON-PLATED	4

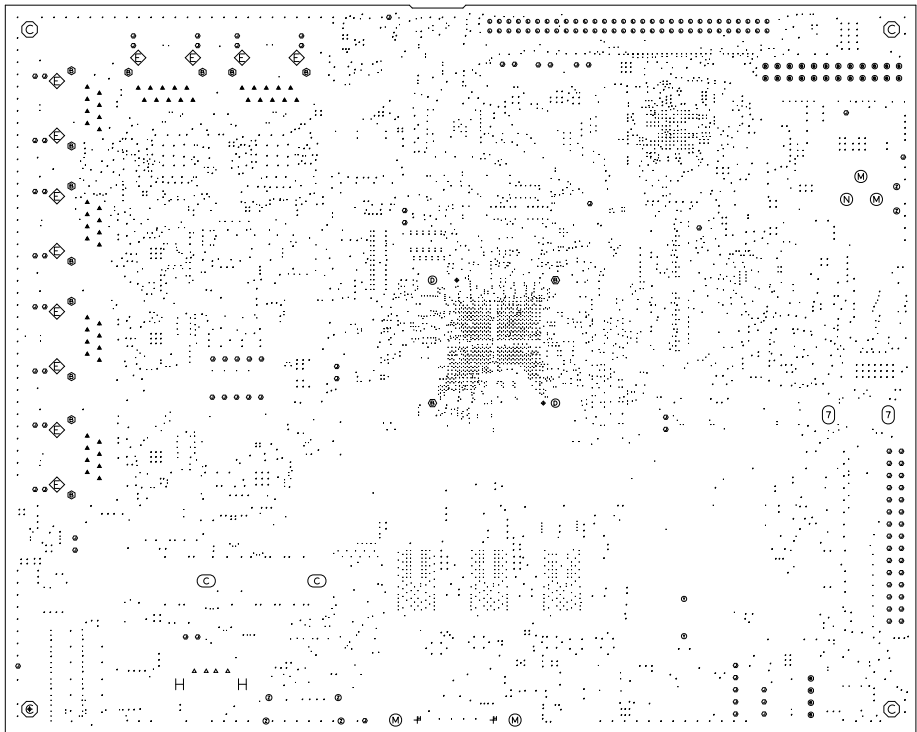
DRILL CHART: TOP to L2_GND1				
ALL UNITS ARE IN MILS				
FIGURE	SIZE	TOLERANCE	PLATED	QTY
.	5.0	+2.0/-2.0	PLATED	518
.	8.0	+2.0/-2.0	PLATED	612

DRILL CHART: L2_GND1 to L3_SIG1				
ALL UNITS ARE IN MILS				
FIGURE	SIZE	TOLERANCE	PLATED	QTY
.	5.0	+2.0/-2.0	PLATED	518
.	8.0	+2.0/-2.0	PLATED	612

DRILL CHART: L3_SIG1 to L10_SIG4				
ALL UNITS ARE IN MILS				
FIGURE	SIZE	TOLERANCE	PLATED	QTY
.	8.0	+2.0/-2.0	PLATED	920

DRILL CHART: L10_SIG4 to L11_GND4				
ALL UNITS ARE IN MILS				
FIGURE	SIZE	TOLERANCE	PLATED	QTY
.	5.0	+2.0/-2.0	PLATED	361
.	8.0	+2.0/-2.0	PLATED	446

DRILL CHART: L11_GND4 to BOTTOM				
ALL UNITS ARE IN MILS				
FIGURE	SIZE	TOLERANCE	PLATED	QTY
.	5.0	+2.0/-2.0	PLATED	363
.	8.0	+2.0/-2.0	PLATED	447



7.50 [190.5]

CUSTOMER NAME: TEXAS INSTRUMENTS	
BOARD NAME: AM571X_INDUSTRIAL_EVM	DESCRIPTION: FABRICATION DRAWING
BOARD NO: 3M0000	REV: 1.3A DATE: 12/31/2015 SH 1 OF 1

LAYERS	SINGLE-ENDED				EDGE-COUPLED DIFFERENTIAL					
	TRACE WIDTH in mils	TARGET Ohms +/-10%	TRACE WIDTH in mils	TARGET Ohms +/-10%	TRACE WIDTH in mils	TRACE SPACE in mils	TARGET Ohms +/-10%	TRACE WIDTH in mils	TRACE SPACE in mils	TARGET Ohms +/-10%
L1_TOP	6.8	50	4.2	60	5.9	6.1	90	4.25	5.75	100
L3_SIG1	4.3	50	-	-	4.3	7.7	90	3.25	8.75	100
L4_SIG2	4.5	50	-	-	-	-	-	3.9	8.1	100
L9_SIG3	4.5	50	-	-	-	-	-	3.9	8.1	100
L10_SIG4	4.3	50	-	-	4.3	7.7	90	3.25	8.75	100
L12_BOTTOM	6.8	50	4.2	60	5.9	6.1	90	4.25	5.75	100


NOTE :
IMPEDANCE REQUIREMENT :- THIS DESIGN MAY NOT CONTAIN ALL THE FEATURES
LISTED IN THE ABOVE TABLE

FAB NOTES:

- ALL DIMENSIONS ARE IN INCHES, UNLESS OTHERWISE NOTED.
- THE PWB SHALL BE FABRICATED TO IPC-6012, CLASS 2 AND WORKMANSHIP SHALL CONFORM TO IPC-A-600, CLASS 2. CURRENT REVISIONS.
- BOARD MATERIAL SHALL BE 180 Tg/350 Td ISOLA FR-370 HR OR EQUIVALENT, RoHS COMPLIANT AND LEAD FREE ASSEMBLY CAPABLE. BOARD MATERIAL SHALL MEET OR EXCEED IPC-4101B. COLOR: NATURAL.
- BOARD MATERIAL & CONSTRUCTION TO BE UL94V0 CERTIFIED AND MARKED ON TOP SIDE OF FINISHED BOARD.
- MINIMUM COPPER WALL THICKNESS OF PLATED-THRU HOLES TO BE .001 INCH, WITH A MINIMUM ANNULAR RING OF .002 INCH.
- OVERALL BOARD THICKNESS TO BE .0625 +/- 10% AND APPLIES AFTER ALL LAMINATION AND PLATING PROCESSES, MEASURED FROM COPPER TO COPPER.
- MAX. WARP & TWIST TO BE .0075 INCHES PER INCH.
- BOARD MUST BE ELECTRICALLY TESTED USING SUPPLIED IPC-D-356 NETLIST.
- ALL VIAS TO HAVE SOLDERMASK.

PROCESS NOTES:

- PLATE ALL EXPOSED AREAS WITH ELECTROLESS IMMERSION GOLD, NICKEL 150 MICROINCHES THK MIN GOLD 2-8 MICROINCHES THK MIN.
- APPLY LPI SOLDERMASK OVER BARE COPPER (SMOBC). COLOR: BLACK SOLDERMASK SHALL CONFORM TO IPC-SM-840, CLASS H. CURRENT REV.
- SOLDERMASK ARTWORK HAS ZERO (0) OVERSIZED PADS. FABRICATION VENDOR IS ALLOWED TO ADJUST THE COMPONENT SOLDERMASK PADS TO MEET THEIR TOOLING REQUIREMENTS.
- APPLY LPI SILKSCREEN OR EQUIVALENT PER THE ARTWORK. COLOR: WHITE.

UNLESS OTHERWISE SPECIFIED		SIGNATURES	DATE	 TEXAS INSTRUMENTS	
DIMENSIONS ARE IN INCH TOLERANCES ON: 2 PL DECIMALS + 3 PL DECIMALS + ANGLES + FRACTIONS +		LAYOUT BY Lnt			
		REVIEWED BY			
		APPROVED BY TI			
				AM571X_INDUSTRIAL_EVM_3M0000_PCB_REV1_3A	
				SIZE	
				SCALE	1:1

4

3

2

1