

8

7

6

5

4

3

2

D

C

B

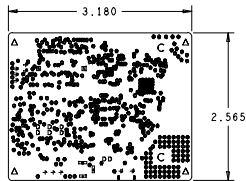
A

D

C

B

A



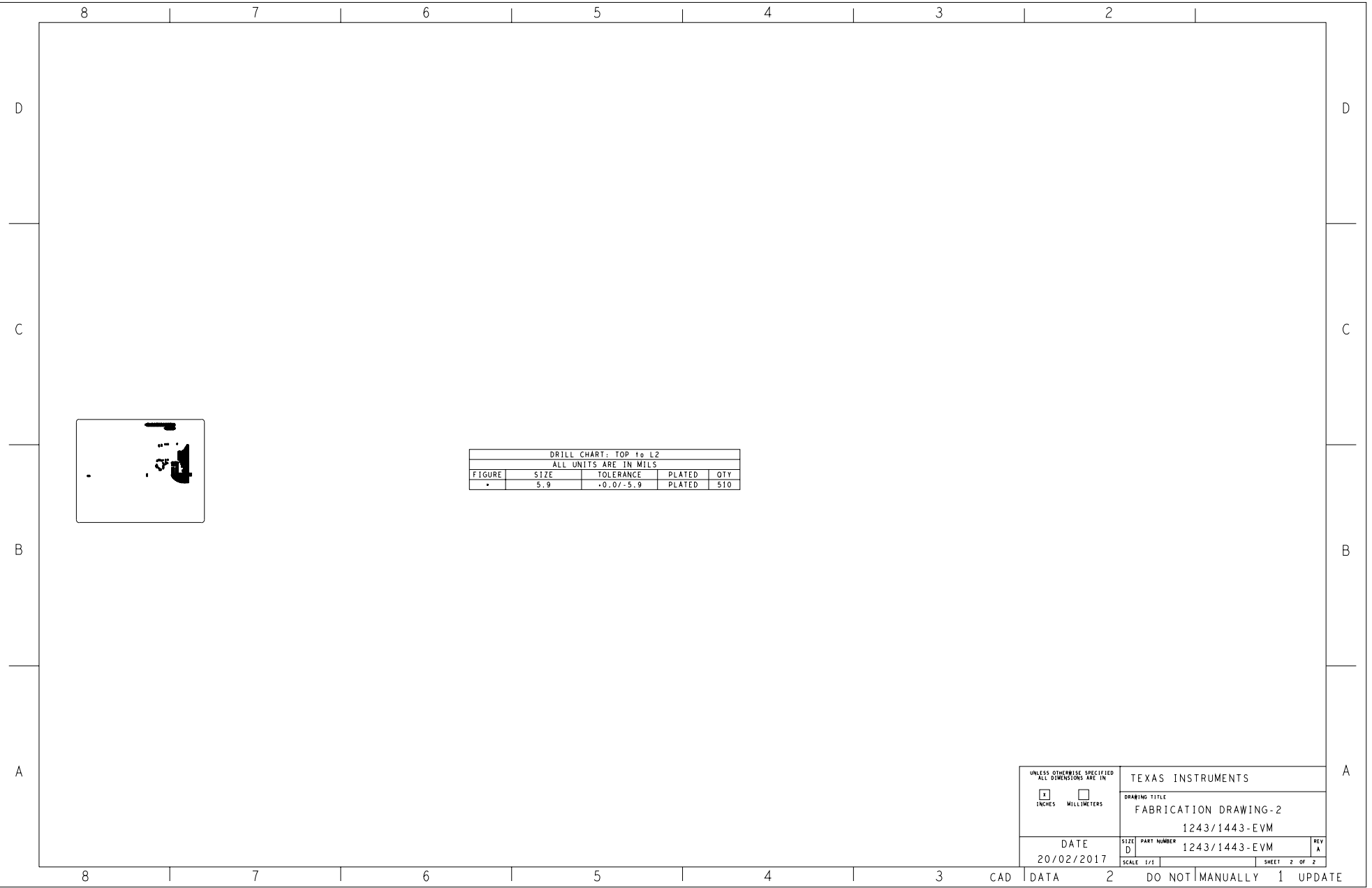
DRILL CHART: TOP to BOTTOM				
ALL UNITS ARE IN MILS				
FIGURE	SIZE	TOLERANCE	PLATED	QTY
•	12.2	+0.0/-12.2	PLATED	635
•	33.46	+2.0/-2.0	PLATED	2
•	40.16	+2.0/-2.0	PLATED	2
•	40.2	+2.0/-2.0	PLATED	3
•	43.31	+2.99/-2.99	PLATED	8
•	47.33	+2.99/-2.99	PLATED	3
C	157.48	+2.0/-2.0	PLATED	2
■	40.2	+2.0/-2.0	NON-PLATED	2
Δ	160.0	+2.0/-2.0	NON-PLATED	4
■	51.18x23.62	+2.0/-2.0	PLATED	2
■	118.11x39.37	+2.0/-2.0	PLATED	1
■	118.11x39.37	+2.0/-2.0	PLATED	1
■	137.8x39.37	+2.0/-2.0	PLATED	1

NOTES: UNLESS OTHERWISE SPECIFIED.

- 1.FABRICATE PER IPC-6012A CLASS 2.
2. FOR BOARD THICKNESS AND IMPEDANCE DETAILS REFER STACKUP DOCUMENT.
- 3.PRINTED WIRING BOARD SHALL COMPLY WITH REQUIREMENTS OF ANSI/J-STD-003.
- 4.SURFACE FINISH:IMMERSION SILVER
- 5.SOLDERMASK ON BOTH SIDES OF THE BOARD SHALL BE LPI, COLOR RED.
- 6.SILK SCREEN LEGEND TO BE APPLIED PER LAYER STACKUP USING WHITE NON-CONDUCTIVE EPOXY INK.
- 7.THIS PRINTED WIRING BOARD IS DESIGNED WITH A MINIMUM CONDUCTOR WIDTH AND SPACING OF 4 MIL & 4 MILS.
- 8.ALL VIAS ARE TENTED ON BOTH SIDES UNLESS SOLDERMASK OPENED IN GERBER.
- 9.ALL VIAS ON PAD SHOULD BE FILLED WITH NON CONDUCTIVE EPOXY AND SURFACE SHOULD BE FLAT
REFER VIA FILL DOCUMENT TO IDENTIFY THE VIAS TO BE FILLED
FLATNESS TOLERANCE FOR VIA ON PADS: +0.000 +/- 0.001 INCHES ON BOTH SIDES.
10. SOLDER MASK OPENING IS KEPT SAME SIZE AS PAD (1:1) FOR ALL COMPONENTS EXCEPT U2
THE MANUFACTURER IS REQUESTED TO SIZE IT AS PER THEIR SOLDERMASK TOLERANCE.
FOR U2 (BGA) PLEASE FOLLOW SAME SOLDERMASK SIZE AS GERBER
- 11.VENDOR SHOULD FOLLOW ROHS COMPLIANT PROCESS AND Pb FREE FOR MANUFACTURING
- 12.MANUFACTURER'S IDENTIFICATION,DATECODE LETTER SHALL BE SILKSCREENED ON SOLDER SIDE OF THE BOARD.
13. TRACE WIDTH SHOULD BE ACCURATELY ETCHED. MAX TOLERANCE +/- 1 MIL
- 14.BOARD DIMENSIONS ARE IN (INCHES).
- 15.BOW AND TWIST SHALL NOT EXCEED 0.7% OF LONGEST SIDE
- 16.PCB Material must meet or exceed UL94V-0 requirements.
PCB must bear the UL94V-0 registered material ID number.
- 17.LAYER TO LAYER REGISTRATION SHALL BE WITHIN +/-2 MIL
- 18.REFER STACKUP DOCUMENT FOR IMPEDENCE CONTROL TRACES ON LAYER 1.
50 OHM SINGLE ENDED AND 100HM DIFFERENTIAL IMPEDENCE CONTROL TRACES.
- 19.FOR ANTENNA ETCHING TOLERANCE REFER "ANTENNA ETCHING REQUIREMENTS"DOCUMENT.

UNLESS OTHERWISE SPECIFIED ALL DIMENSIONS ARE IN		TEXAS INSTRUMENTS	
<input checked="" type="checkbox"/> INCHES	<input type="checkbox"/> MILLIMETERS	DRAWING TITLE	
		FABRICATION DRAWING-1	
		1243/1443-EVM	
DATE		SIZE	PART NUMBER
20/02/2017		D	1243/1443-EVM
		SCALE	SHEET
		1/1	1 OF 2

CAD DATA 2 DO NOT MANUALLY 1 UPDATE



DRILL CHART: TOP to L2				
ALL UNITS ARE IN MILS				
FIGURE	SIZE	TOLERANCE	PLATED	QTY
•	5.9	+0.0/-5.9	PLATED	510

UNLESS OTHERWISE SPECIFIED ALL DIMENSIONS ARE IN		TEXAS INSTRUMENTS	
<input checked="" type="checkbox"/> INCHES	<input type="checkbox"/> MILLIMETERS	DRAWING TITLE	
		FABRICATION DRAWING-2	
		1243/1443-EVM	
DATE		SIZE	PART NUMBER
20/02/2017		D	1243/1443-EVM
		SCALE	SHEET
		1/1	2 OF 2