

8

7

6

5

4

3

2

D

D

C

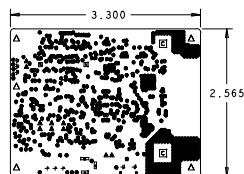
C

B

B

A

A



NOTES: UNLESS OTHERWISE SPECIFIED.

- 1.FABRICATE PER IPC-6012A CLASS 2.
2. FOR BOARD THICKNESS AND IMPEDANCE DETAILS REFER STACKUP DOCUMENT.
- 3.PRINTED WIRING BOARD SHALL COMPLY WITH REQUIREMENTS OF ANSI/J-STD-003.
- 4.SURFACE FINISH:IMMERSION SILVER
- 5.SOLDERMASK ON BOTH SIDES OF THE BOARD SHALL BE LPI, COLOR RED.
- 6.SILK SCREEN LEGEND TO BE APPLIED PER LAYER STACKUP USING WHITE NON-CONDUCTIVE EPOXY INK.
- 7.THIS PRINTED WIRING BOARD IS DESIGNED WITH A MINIMUM CONDUCTOR WIDTH AND SPACING OF 4 MIL & 4 MILS.
- 8.ALL VIAS ARE TENTED ON BOTH SIDES UNLESS SOLDERMASK OPENED IN GERBER.
- 9.ALL VIAS ON PAD INCLUDING BGA AREA SHOULD BE FILLED WITH NON CONDUCTIVE EPOXY AND SURFACE SHOULD BE FLAT BGA AREA VIAS SHOULD BE CAPPED WITH COPPER PLATING TO ENSURE FLAT SURFACE REFER VIA FILL DOCUMENT TO IDENTIFY THE VIAS TO BE FILLED FLATNESS TOLERANCE FOR VIA ON PADS: +0.000 +/- 0.001 INCHES ON BOTH SIDES.
10. SOLDER MASK OPENING IS KEPT SAME SIZE AS PAD (1:1) FOR ALL COMPONENTS EXCEPT U2 THE MANUFACTURER IS REQUESTED TO RESIZE IT AS PER THEIR SOLDERMASK TOLERANCE EXCEPT NPTH DRILL AND FIDUCIALS. FOR U2 (BGA) PLEASE FOLLOW SAME SOLDERMASK SIZE AS GERBER
- 11.VENDOR SHOULD FOLLOW ROHS COMPLIANT PROCESS AND Pb FREE FOR MANUFACTURING
- 12.MANUFACTURER'S IDENTIFICATION,DATECODE LETTER SHALL BE SILKSCREENED ON SOLDER SIDE OF THE BOARD.
13. TRACE WIDTH SHOULD BE ACCURATELY ETCHED, MAX TOLERANCE +/- 1 MIL
- 14.BOARD DIMENSIONS ARE IN (INCHES).
- 15.BOW AND TWIST SHALL NOT EXCEED 0.7% OF LONGEST SIDE
- 16.PCB Material must meet or exceed UL94V-0 requirements. PCB must bear the UL94V-0 registered material ID number.
- 17.LAYER TO LAYER REGISTRATION SHALL BE WITHIN +/-2 MIL
- 18.REFER STACKUP DOCUMENT FOR IMPEDENCE CONTROL TRACES ON LAYER 1.

50 OHM SINGLE ENDED AND 100HM DIFFERENTIAL IMPEDENCE CONTROL TRACES.

DRILL CHART: TOP to BOTTOM				
ALL UNITS ARE IN MILS				
FIGURE	SIZE	TOLERANCE	PLATED	QTY
•	12.2	+0.0/-12.2	PLATED	1051
•	33.46	+2.0/-2.0	PLATED	2
•	40.2	+2.0/-2.0	PLATED	3
•	43.31	+2.99/-2.99	PLATED	10
•	47.33	+2.99/-2.99	PLATED	3
□	157.48	+2.0/-2.0	PLATED	2
■	40.2	+3.0/-3.0	NON-PLATED	2
Δ	160.0	+1.0/-1.0	NON-PLATED	5
■	51.18x23.62	+2.0/-2.0	PLATED	2
■	118.11x39.37	+2.0/-2.0	PLATED	1
■	118.11x39.37	+2.0/-2.0	PLATED	1
■	137.8x39.37	+2.0/-2.0	PLATED	1

UNLESS OTHERWISE SPECIFIED ALL DIMENSIONS ARE IN		TEXAS INSTRUMENTS	
<input checked="" type="checkbox"/> INCHES	<input type="checkbox"/> MILLIMETERS	DRAWING TITLE FABRICATION DRAWING-1 1642-EVM	
DATE 02/03/2017	SIZE D	PART NUMBER 1642-EVM	REV A
SCALE 1/1	SHEET 1 OF 2		

8

7

6

5

4

3

CAD

DATA

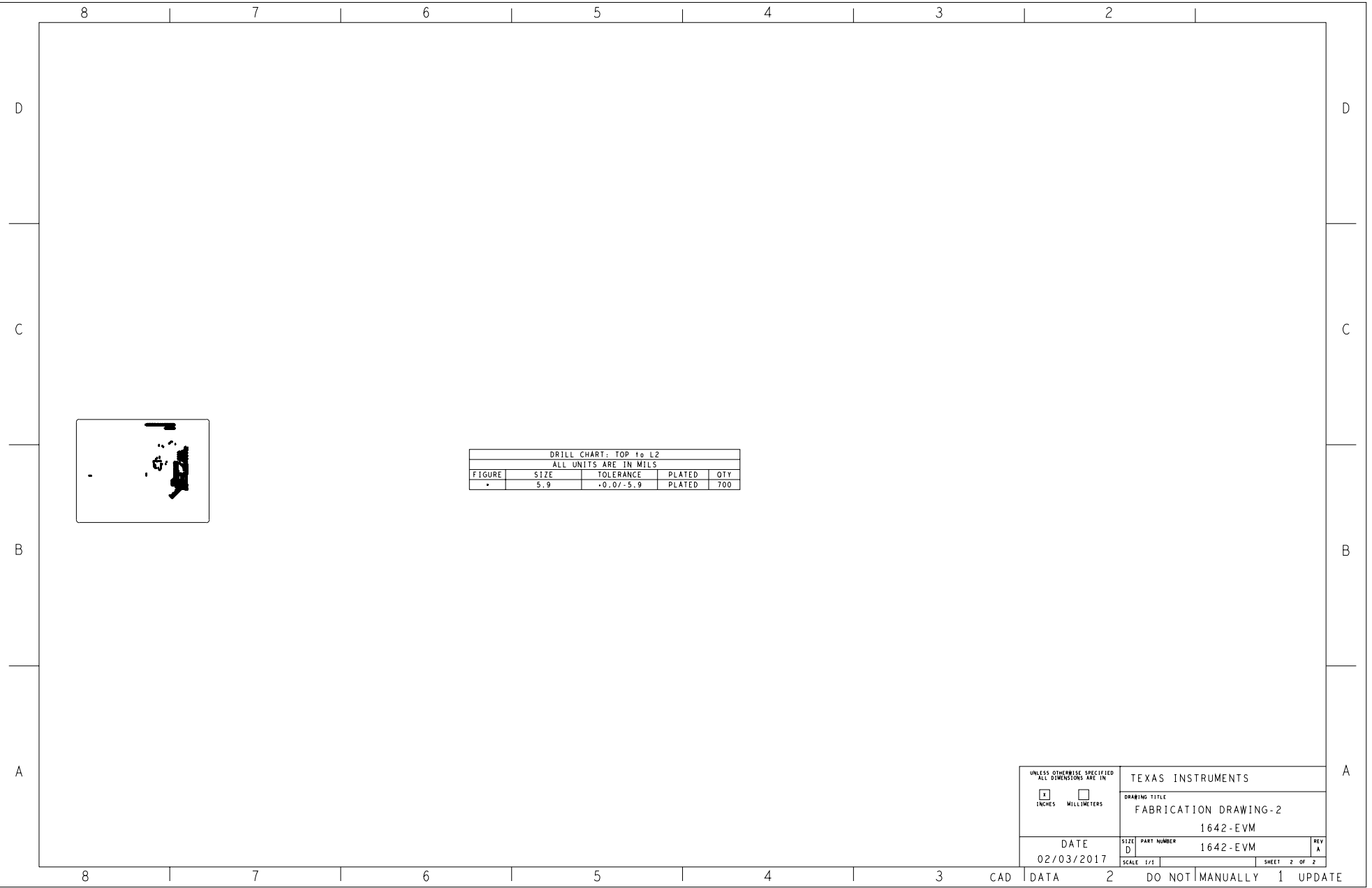
2

DO NOT

MANUALLY

1

UPDATE



DRILL CHART: TOP to L2				
ALL UNITS ARE IN MILS				
FIGURE	SIZE	TOLERANCE	PLATED	QTY
•	5.9	+0.0/-5.9	PLATED	700

UNLESS OTHERWISE SPECIFIED ALL DIMENSIONS ARE IN		TEXAS INSTRUMENTS		
<input checked="" type="checkbox"/> INCHES	<input type="checkbox"/> MILLIMETERS	DRAWING TITLE		
		FABRICATION DRAWING-2		
		1642-EVM		
DATE		SIZE	PART NUMBER	REV
02/03/2017		D	1642-EVM	A
SCALE 1/1		SHEET 2 OF 2		

CAD DATA 2 DO NOT MANUALLY 1 UPDATE