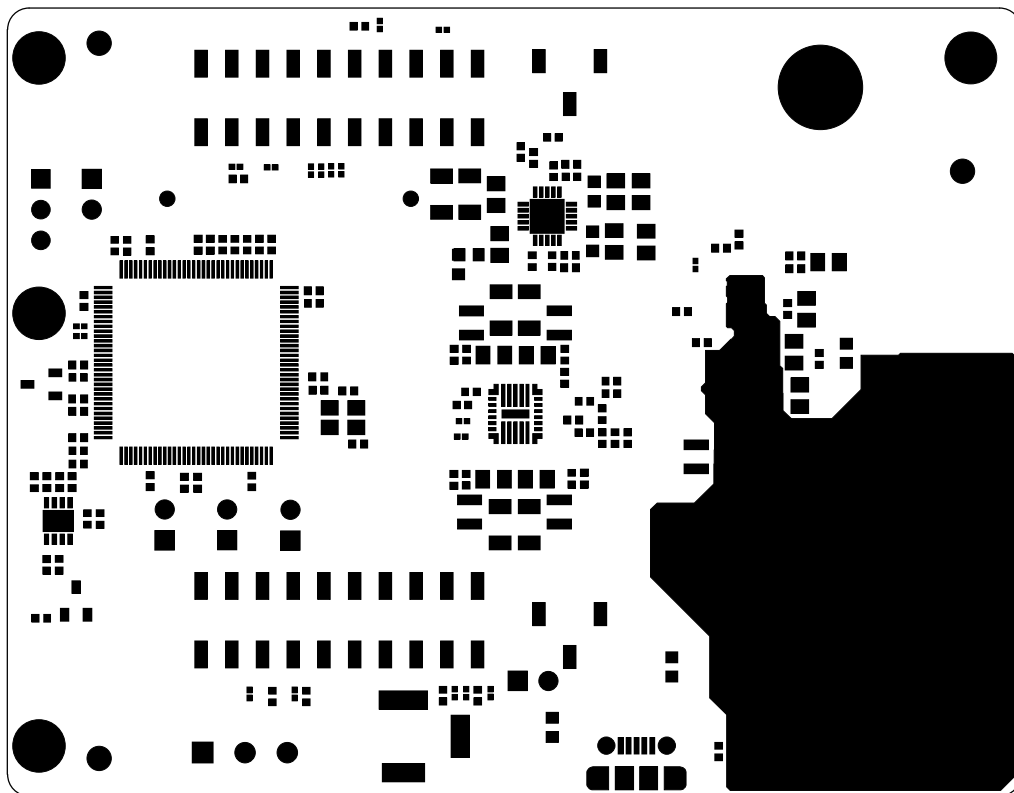

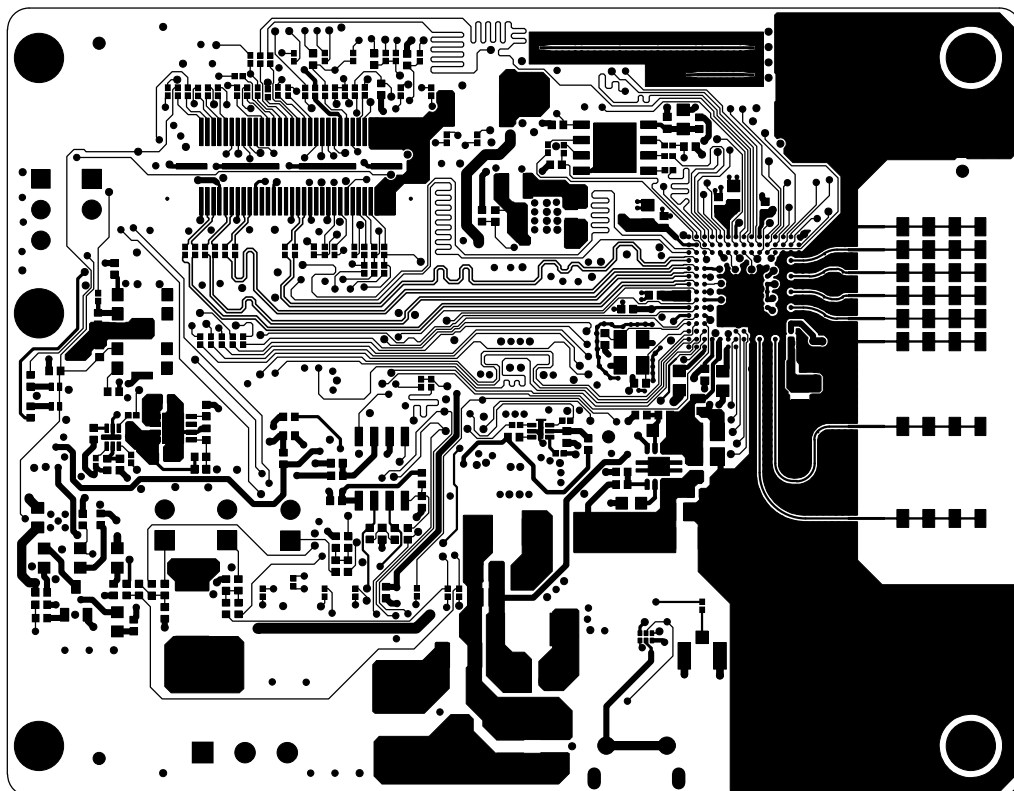

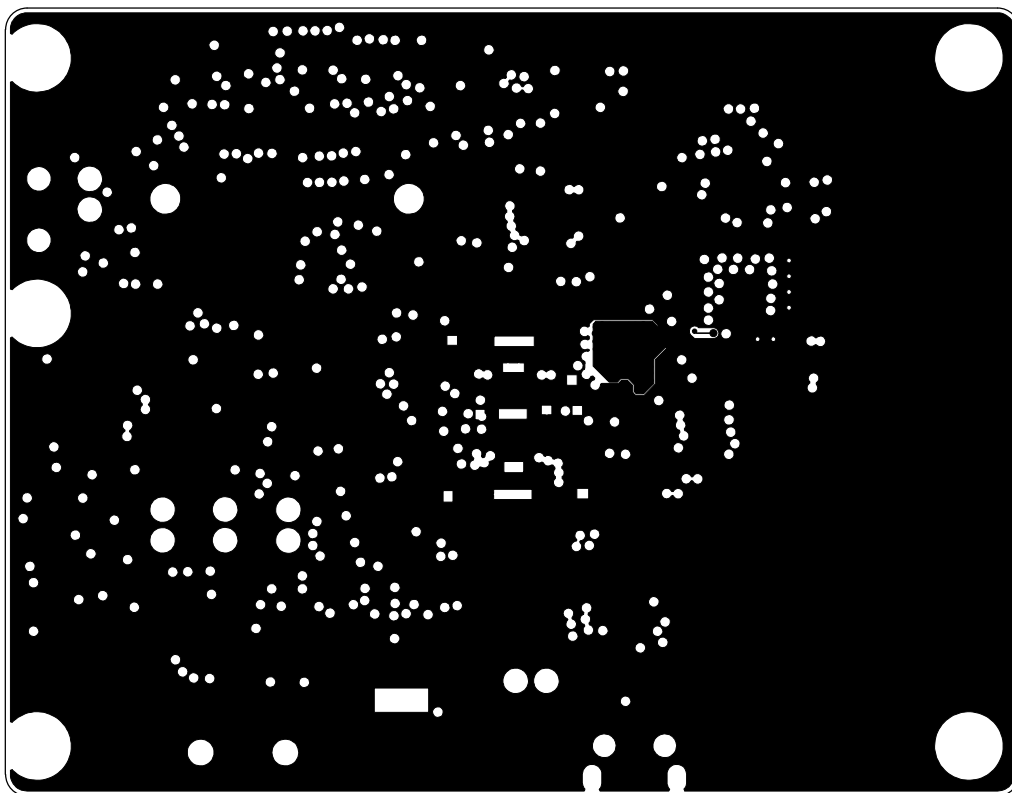
 TEXAS INSTRUMENTS	TEXAS INSTRUMENTS	
	SILKSCREEN TOP	1642-EVM Rev-A
	DATE: 02/MARCH/2017	




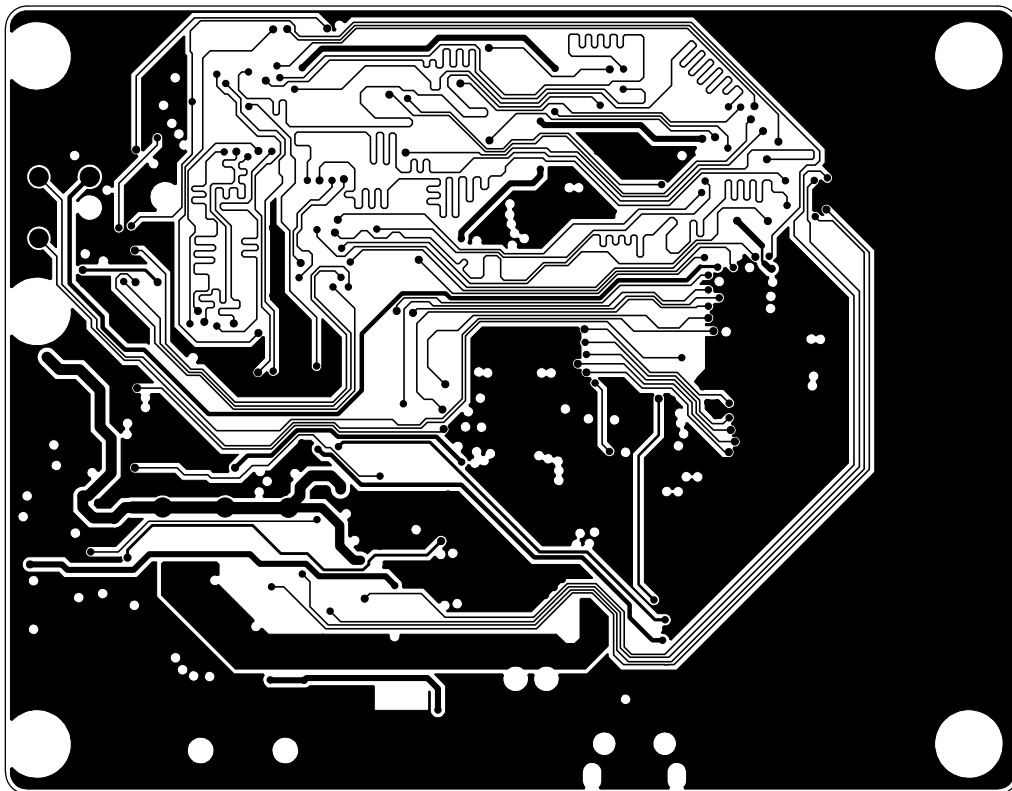
 TEXAS INSTRUMENTS	TEXAS INSTRUMENTS	
	SOLDERMASK BOTTOM	1642-EVM Rev-A
	DATE: 02/MARCH/2017	




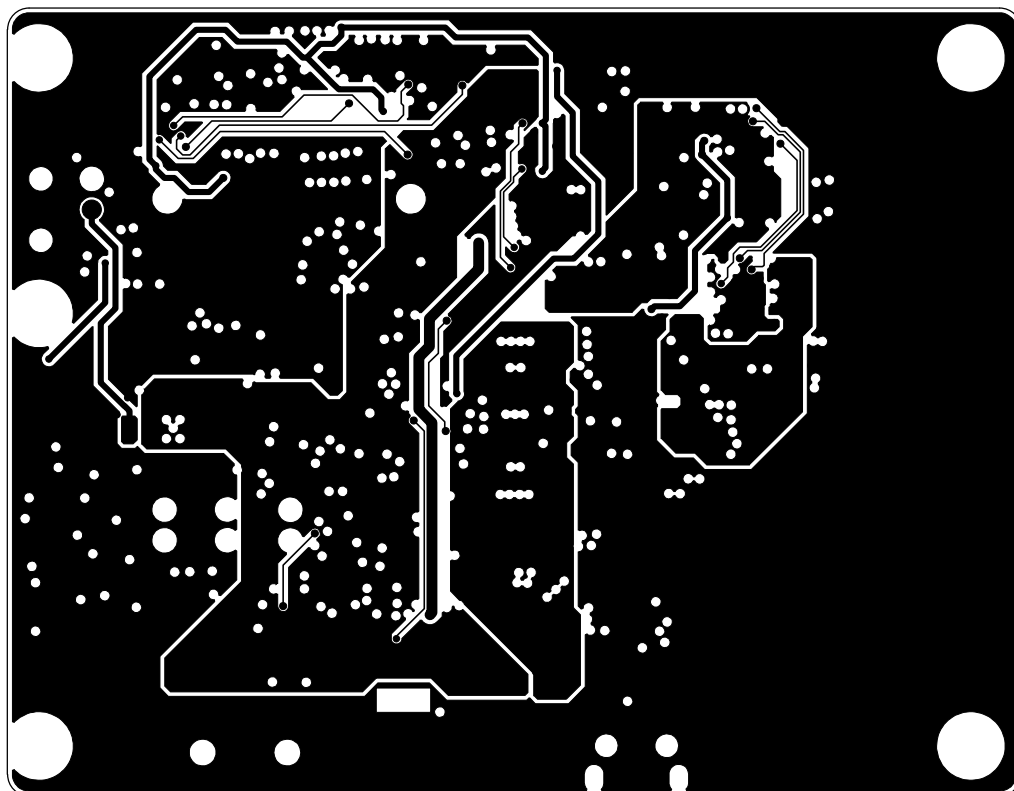
 TEXAS INSTRUMENTS	TEXAS INSTRUMENTS	
	LAYER-1 TOP	1642-EVM Rev-A
	DATE: 02/MARCH/2017	




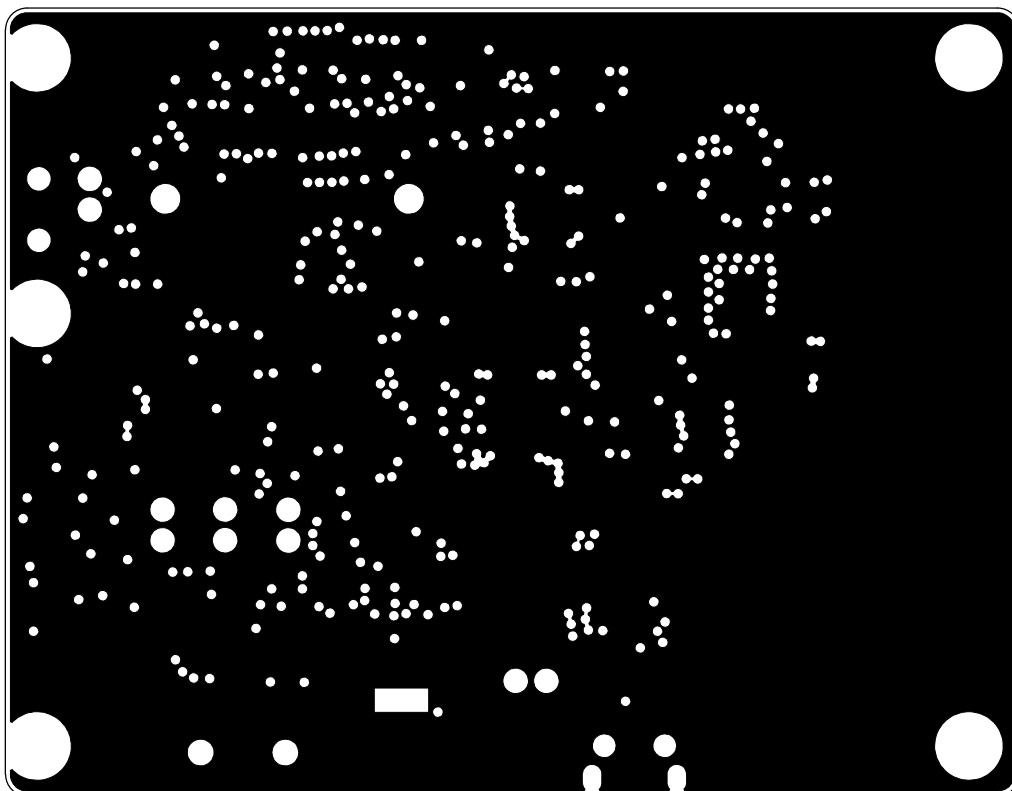
 TEXAS INSTRUMENTS	TEXAS INSTRUMENTS	
	LAYER-2 GROUND	1642-EVM Rev-A
	DATE: 02/MARCH/2017	




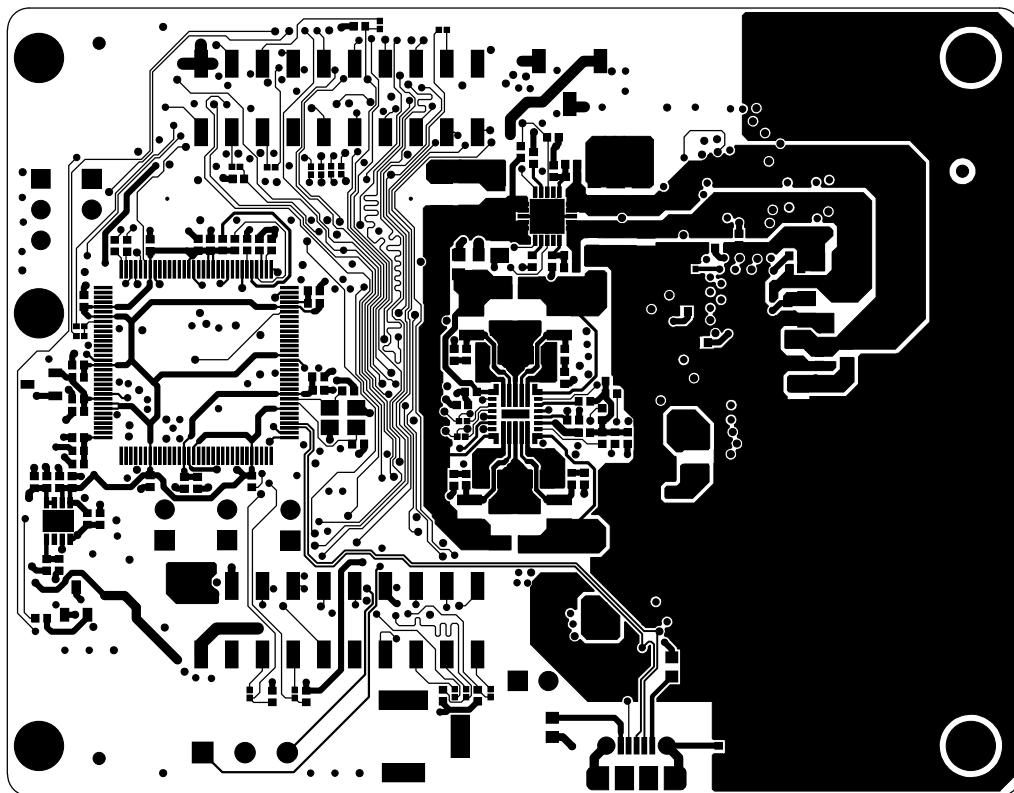
 TEXAS INSTRUMENTS	TEXAS INSTRUMENTS	
	LAYER-3 GND/SIGNAL	1642-EVM Rev-A
	DATE: 02/MARCH/2017	




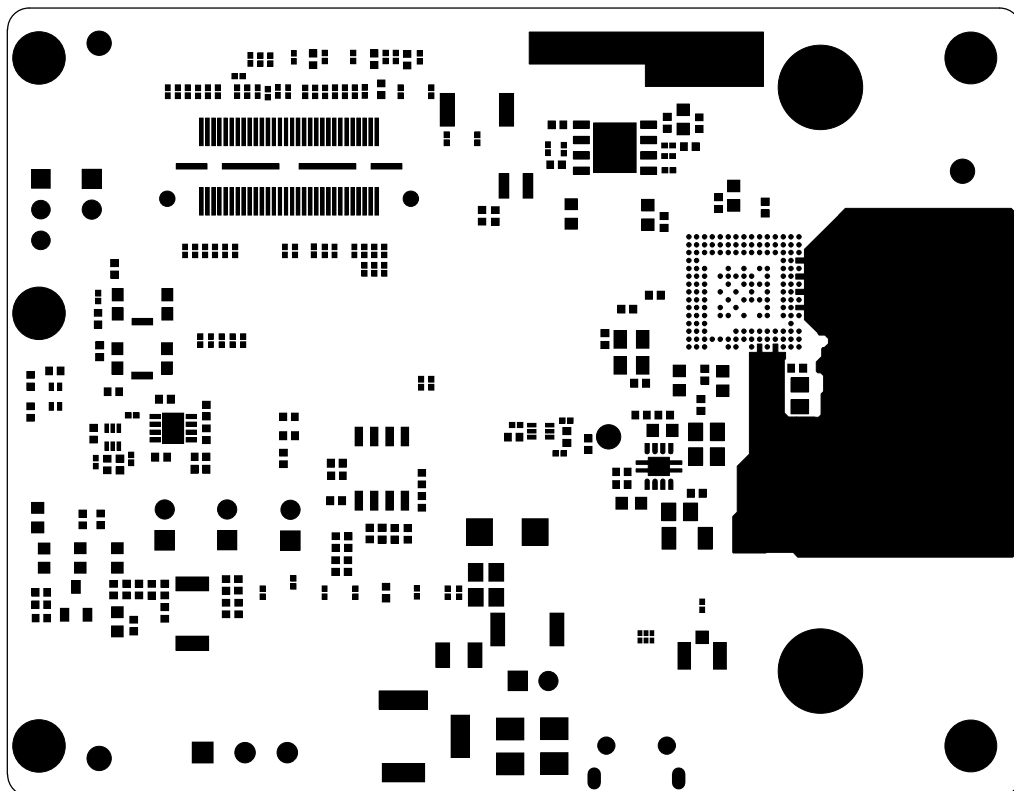
 TEXAS INSTRUMENTS	TEXAS INSTRUMENTS	
	LAYER-4 GND/SIGNAL	1642-EVM Rev-A
	DATE: 02/MARCH/2017	




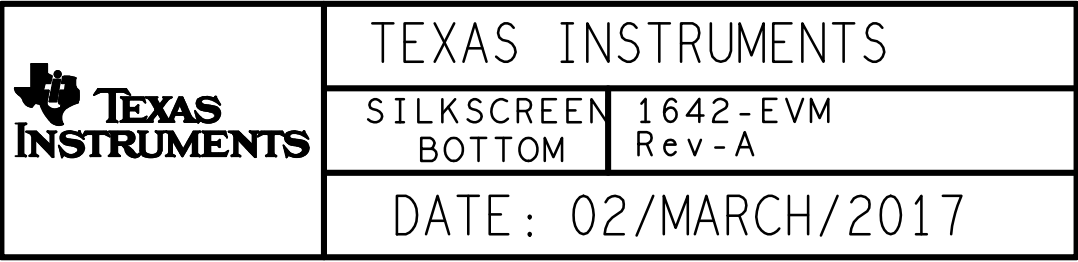
 TEXAS INSTRUMENTS	TEXAS INSTRUMENTS	
	LAYER-5 GROUND	1642-EVM Rev-A
	DATE: 02/MARCH/2017	



 TEXAS INSTRUMENTS	TEXAS INSTRUMENTS	
	LAYER - 6 BOTTOM	1642 - EVM Rev - A
	DATE : 02/MARCH/2017	




 TEXAS INSTRUMENTS	TEXAS INSTRUMENTS	
	SOLDERMASK TOP	1642-EVM Rev-A
	DATE: 02/MARCH/2017	



DATE: 02/MARCH/2017



 TEXAS INSTRUMENTS	TEXAS INSTRUMENTS	
	BOARD OUTLINE	1642-EVM Rev-A
	DATE: 02/MARCH/2017	