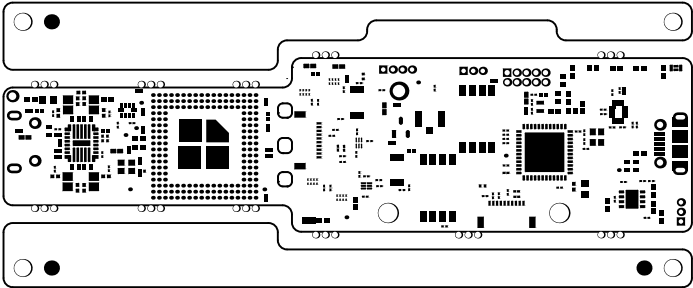
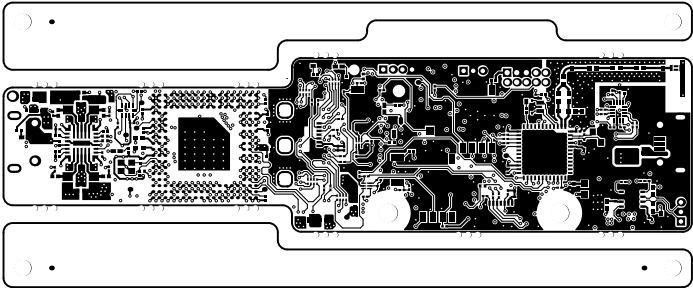


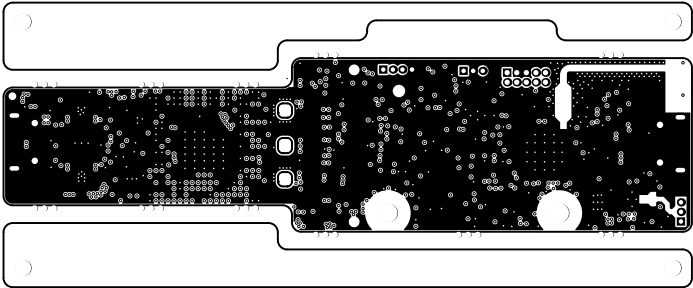
ALL ARTWORK VIEWED FROM TOP SIDE	BOARD #: PROC091	REV: F	SUN REV: Not In VersionControl
LAYER NAME = Top Overlay	TID #: N/A		
PLOT NAME = Top Overlay	GENERATED : 11-11-2020 20:25:39		TEXAS INSTRUMENTS



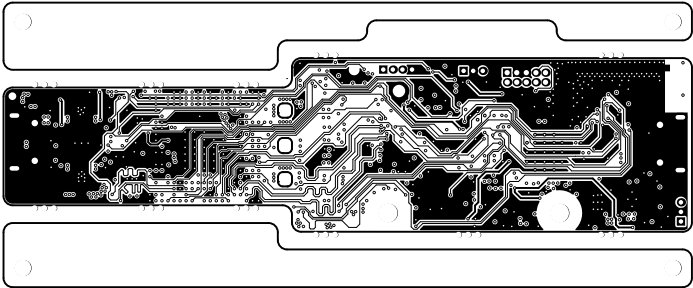
ALL ARTWORK VIEWED FROM TOP SIDE	BOARD #: PROC091	REV: F	SUN REV: Not In VersionControl
LAYER NAME = Top Solder	TID #: N/A		
PLOT NAME = Top Solder Mask	GENERATED : 11-11-2020 20:25:40		TEXAS INSTRUMENTS



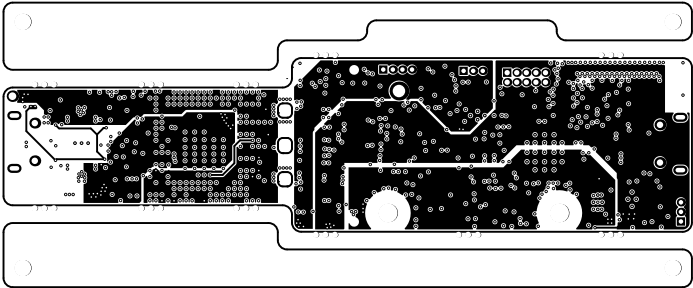
ALL ARTWORK VIEWED FROM TOP SIDE	BOARD #: PROC091	REV: F	SUN REV: Not In VersionControl
LAYER NAME = Top Layer	TID #: N/A		
PLOT NAME = Top Layer	GENERATED : 11-11-2020 20:25:40		TEXAS INSTRUMENTS



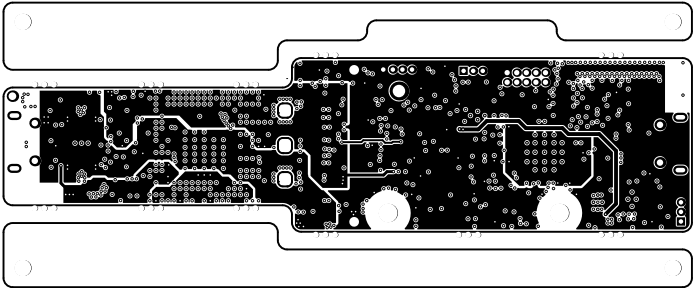
ALL ARTWORK VIEWED FROM TOP SIDE	BOARD #: PROC091	REV: F	SUN REV: Not In VersionControl
LAYER NAME = GND1	TID #: N/A		
PLOT NAME = Signal Layer 1	GENERATED : 11-11-2020 20:25:40		TEXAS INSTRUMENTS



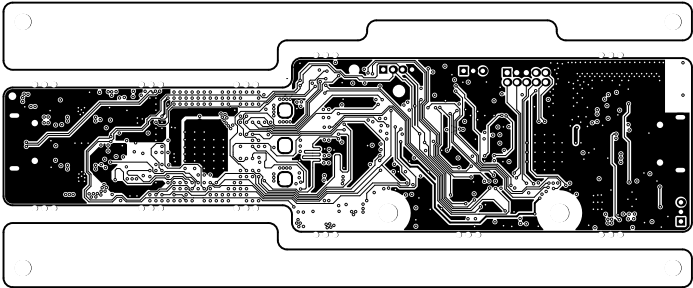
ALL ARTWORK VIEWED FROM TOP SIDE	BOARD #: PROC091	REV: F	SUN REV: Not In VersionControl
LAYER NAME = Sig1	TID #: N/A		
PLOT NAME = Signal Layer 2	GENERATED : 11-11-2020 20:25:40		TEXAS INSTRUMENTS



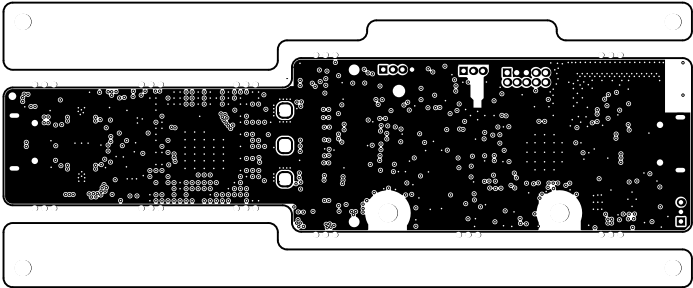
ALL ARTWORK VIEWED FROM TOP SIDE	BOARD #: PROC091	REV: F	SUN REV: Not In VersionControl
LAYER NAME = PWR1	TID #: N/A		
PLOT NAME = Signal Layer 3	GENERATED : 11-11-2020 20:25:40		TEXAS INSTRUMENTS



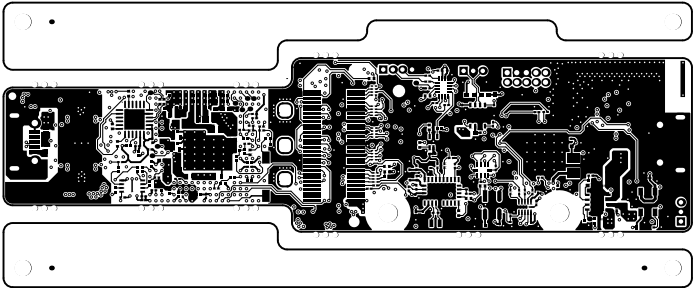
ALL ARTWORK VIEWED FROM TOP SIDE	BOARD #: PROC091	REV: F	SUN REV: Not In VersionControl
LAYER NAME = PWR2	TID #: N/A		
PLOT NAME = Signal Layer 4	GENERATED : 11-11-2020 20:25:40		TEXAS INSTRUMENTS



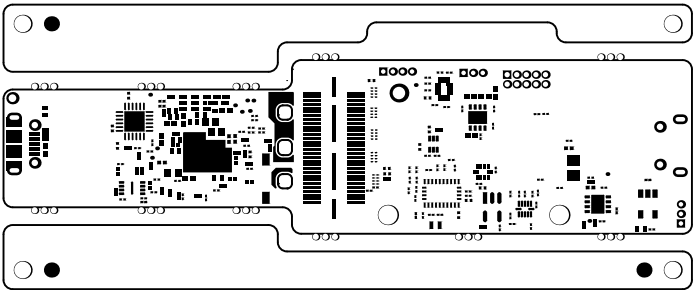
ALL ARTWORK VIEWED FROM TOP SIDE	BOARD #: PROC091	REV: F	SUN REV: Not In VersionControl
LAYER NAME = Sig2	TID #: N/A		
PLOT NAME = Signal Layer 5	GENERATED : 11-11-2020 20:25:40		TEXAS INSTRUMENTS



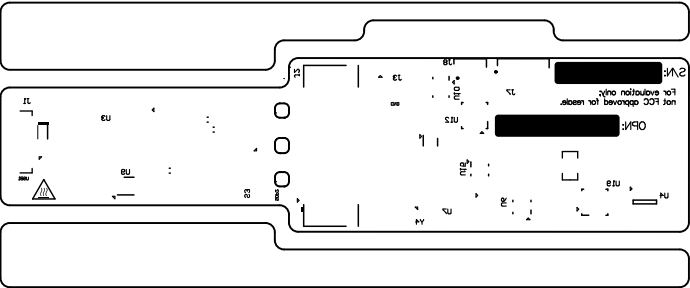
ALL ARTWORK VIEWED FROM TOP SIDE	BOARD #: PROC091	REV: F	SUN REV: Not In VersionControl
LAYER NAME = GND2	TID #: N/A		
PLOT NAME = Signal Layer 6	GENERATED : 11-11-2020 20:25:41		TEXAS INSTRUMENTS



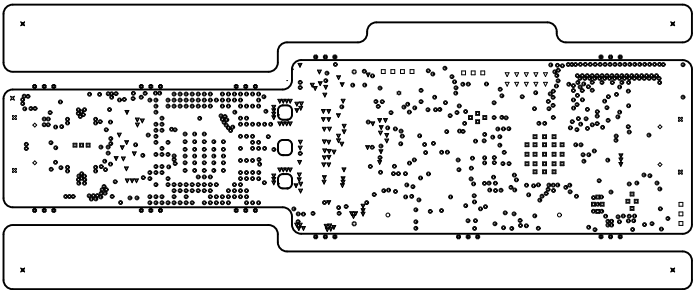
ALL ARTWORK VIEWED FROM TOP SIDE	BOARD #: PROC091	REV: F	SUN REV: Not In VersionControl
LAYER NAME = Bottom Layer	TID #: N/A		
PLOT NAME = Bottom Layer	GENERATED : 11-11-2020 20:25:41		TEXAS INSTRUMENTS



ALL ARTWORK VIEWED FROM TOP SIDE	BOARD #: PROC091	REV: F	SVN REV: Not In VersionControl
LAYER NAME = Bottom Solder	TID #: N/A		
PLOT NAME = Bottom Solder Mask	GENERATED : 11-11-2020 20:25:41		TEXAS INSTRUMENTS



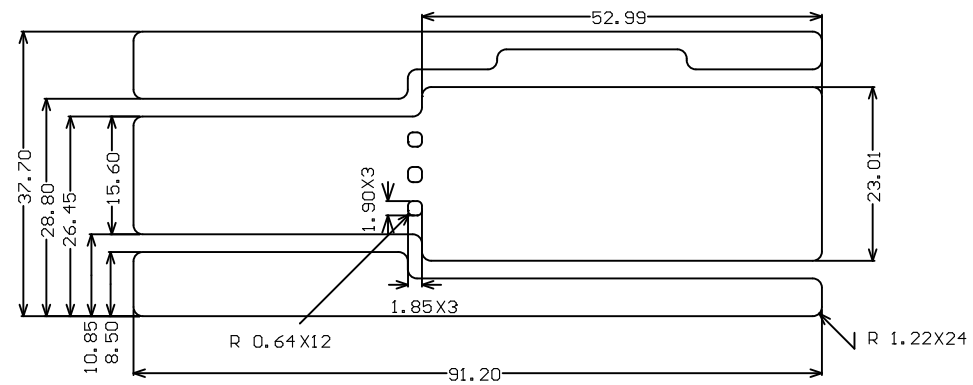
ALL ARTWORK VIEWED FROM TOP SIDE	BOARD #: PROC091	REV: F	SUN REV: Not In VersionControl
LAYER NAME = Bottom Overlay	TID #: N/A		
PLOT NAME = Bottom Overlay	GENERATED : 11-11-2020 20:25:41		TEXAS INSTRUMENTS



Symbol	Quantity	Finished Hole Size	Plated	Hole Type	Drill Layer Pair	Hole Tolerance
■	36	7.87mil	PTH	Round	Top Layer - Bottom Layer	+/-3.00mil
●	626	8.00mil	PTH	Round	Top Layer - Bottom Layer	
▼	112	8.00mil	PTH	Round	Top Layer - Bottom Layer	
□	10	23.62mil	PTH	Round	Top Layer - Bottom Layer	
⊠	4	23.62mil	PTH	Slot	Top Layer - Bottom Layer	
▽	10	27.56mil	PTH	Round	Top Layer - Bottom Layer	
⊕	33	32.00mil	NPTH	Round	Top Layer - Bottom Layer	
◇	4	33.47mil	PTH	Round	Top Layer - Bottom Layer	
⊗	1	40.00mil	PTH	Round	Top Layer - Bottom Layer	
⊙	2	40.16mil	NPTH	Round	Top Layer - Bottom Layer	
⊛	1	64.96mil	PTH	Round	Top Layer - Bottom Layer	
⊠	4	88.00mil	NPTH	Round	Top Layer - Bottom Layer	
○	2	100.00mil	NPTH	Round	Top Layer - Bottom Layer	
845 Total						

Slot definitions : Routed Path Length = Calculated from tool start centre position to tool end centre position.
Hole Length = Routed Path Length + Tool Size = Slot length as defined in the PCB layout

ALL ARTWORK VIEWED FROM TOP SIDE	BOARD #: PROC091	REV: F	SUN REV: Not In VersionControl
LAYER NAME = Drill Drawing	TID #: N/A		
PLOT NAME = Drill Drawing	GENERATED : 11-11-2020 20:25:41		TEXAS INSTRUMENTS



ALL ARTWORK VIEWED FROM TOP SIDE	BOARD #: PROC091	REV: F	SUN REV: Not In VersionControl
LAYER NAME = M2 Board Dimensions	TID #: N/A		
PLOT NAME = Board Dimensions	GENERATED : 11-11-2020 20:25:52		TEXAS INSTRUMENTS