
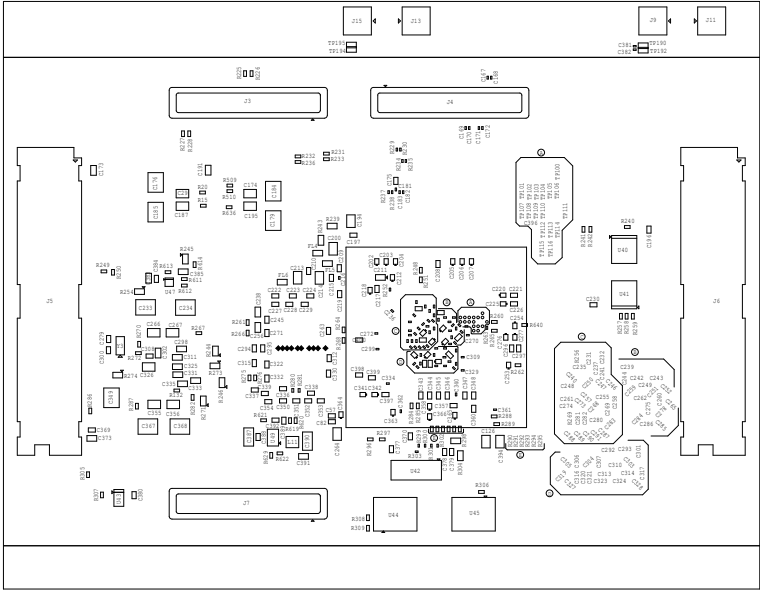



|   |                  |                           |  |           |
|---|------------------|---------------------------|--|-----------|
|  |                  | TEXAS INSTRUMENTS         |  | PROC10566 |
| BOARD NAME: J7200X SOM 941x8764x BRD  | REV: E6          | DESCRIPTION: TOP ASSEMBLY |  |           |
| SCALE: 1  | DATE: 02/09/2020 | SHEET OF19                |  |           |

J7200X SOM 941x+8764x BOTTOM ASSEMBLY REV.E6



|   |  |                   |                              |           |
|---|--|-------------------|------------------------------|-----------|
|  |  | TEXAS INSTRUMENTS |                              | PROC105E6 |
| BOARD NAME: J7200X SOM 941x+8764x BRD   |  | REV: E6           | DESCRIPTION: BOTTOM ASSEMBLY |           |
| SCALE: 1  |  | DATE: 02/09/2020  | SHEET OF 19                  |           |