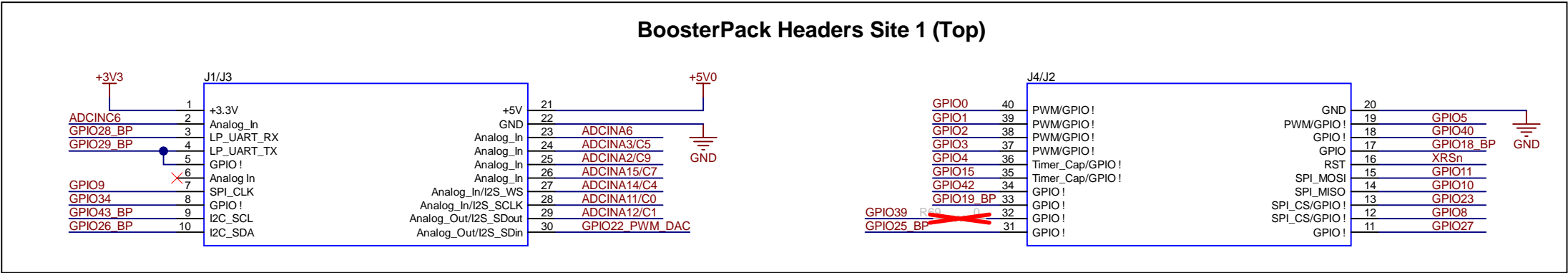


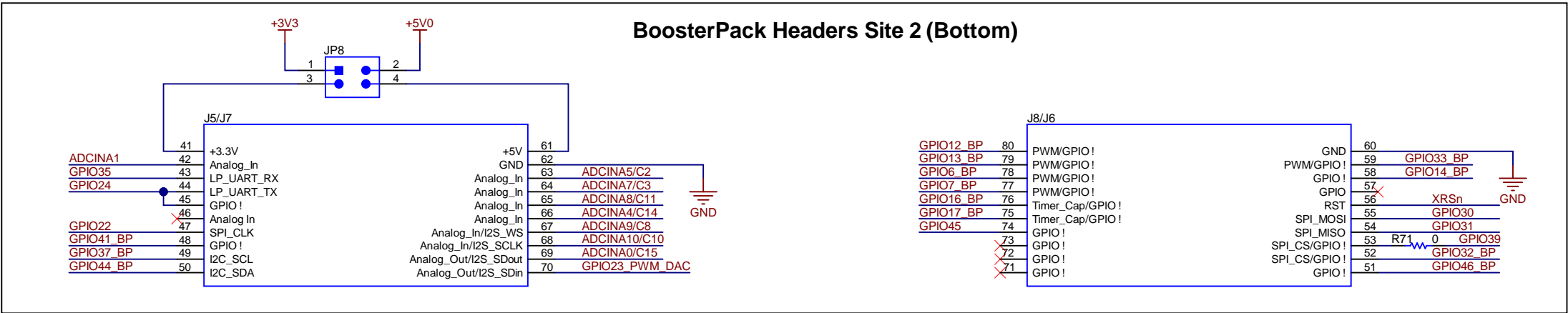
A

A



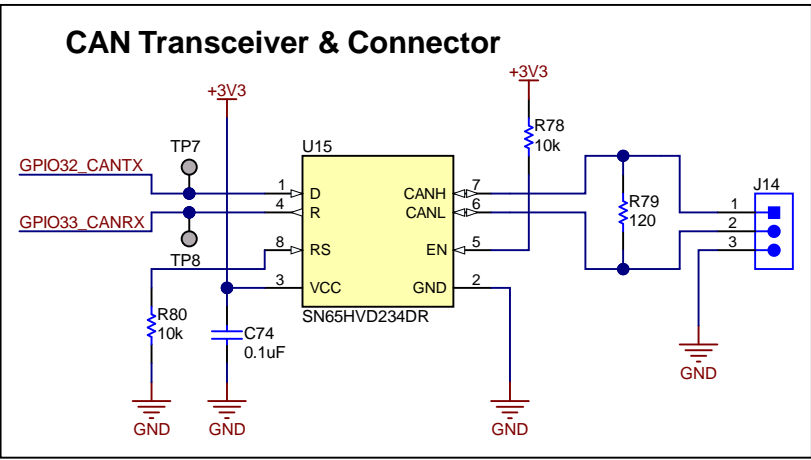
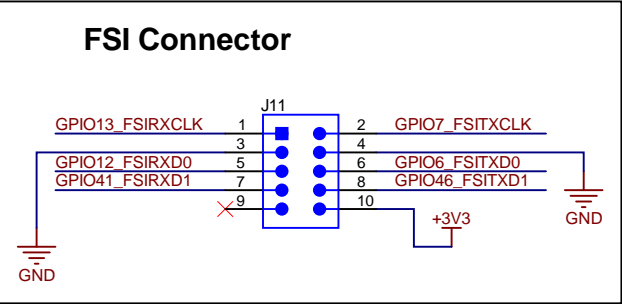
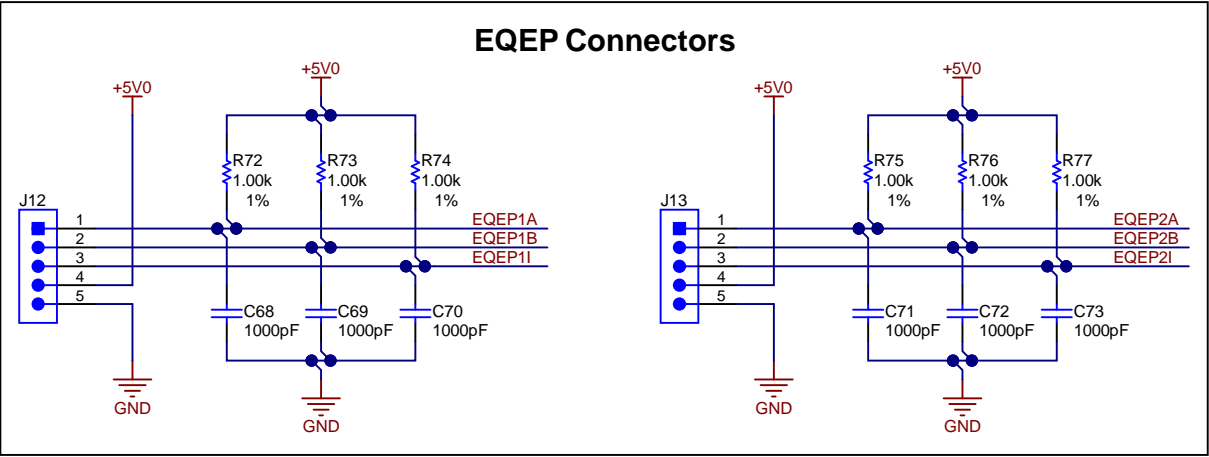
B

B



C

C



D

D

Texas Instruments and/or its licensors do not warrant the accuracy or completeness of this specification or any information contained therein. Texas Instruments and/or its licensors do not warrant that this design will meet the specifications, will be suitable for your application or fit for any particular purpose, or will operate in an implementation. Texas Instruments and/or its licensors do not warrant that the design is production worthy. You should completely validate and test your design implementation to confirm the system functionality for your application.

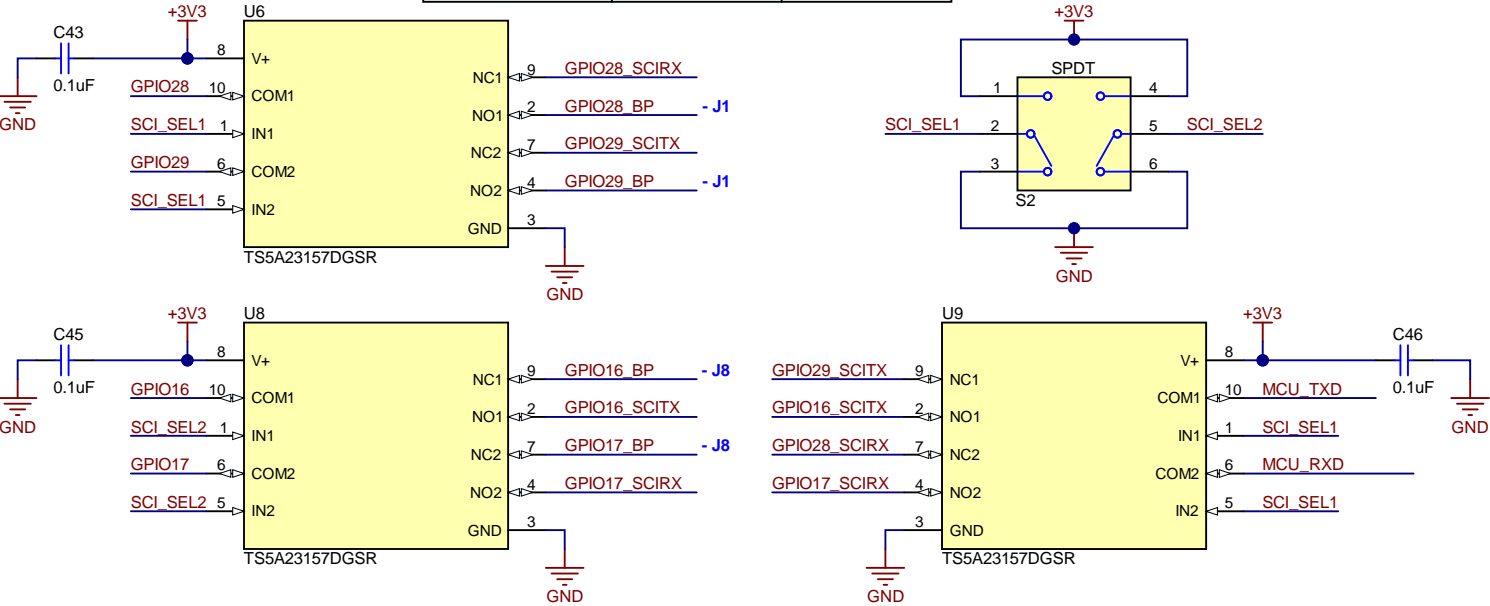
Orderable: <a href="#">LAUNCHXL-F280025C</a>	Designed for: <a href="#">Public Release</a>	Mod. Date: 8/18/2020
TID #: <a href="#">N/A</a>	Project Title: <a href="#">LAUNCHXL-F280025C</a>	
Number: <a href="#">MCU089</a>	Rev: <a href="#">A</a>	Sheet Title:
SVN Rev: <a href="#">Not in version control</a>	Assembly Variant: <a href="#">001</a>	Sheet: <a href="#">2</a> of <a href="#">8</a>
Drawn By:	File: <a href="#">MCU089A_Connectors.SchDoc</a>	Size: <a href="#">B</a>
Engineer: <a href="#">Kevin Allen</a>	Contact: <a href="#">http://www.ti.com/support</a>	<a href="#">http://www.ti.com</a>
© Texas Instruments 2020		



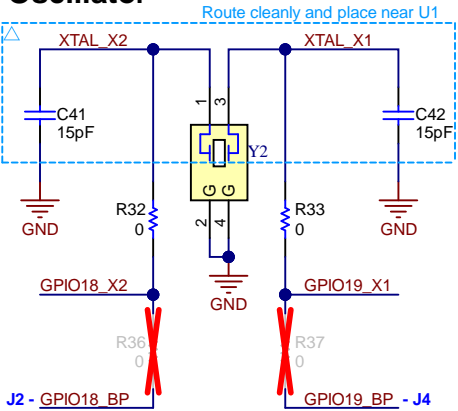
## UART Routing

SCI_SEL1	SCI_SEL2	GPIO28/29 Route	GPIO16/17 Route
0	0	XDS110 COM Port	BP
0	1	XDS110 COM Port	NC
1	0	BP	BP
1	1	BP	XDS110 COM Port

- DEFAULT

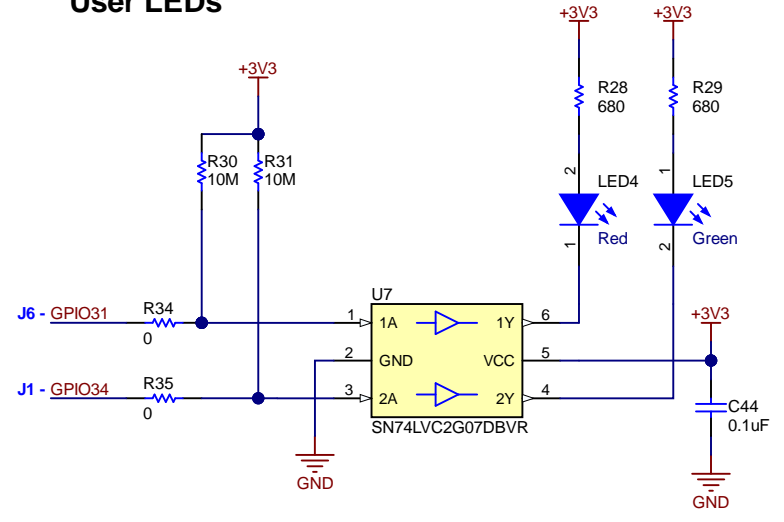


## Oscillator

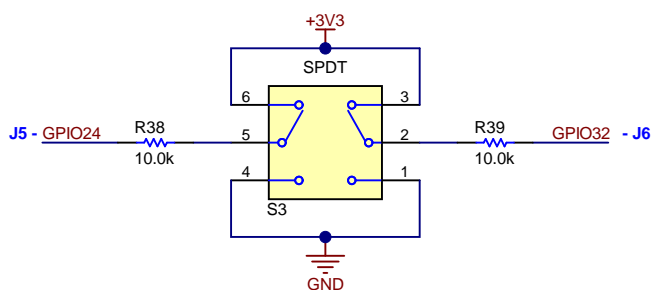


By default:  
- Crystal Y2 is connected between GPIO18\_X2 and GPIO19\_X1.  
- GPIO18\_BP AND GPIO19\_BP are connected to the BoosterPack headers.  
If GPIO18 and GPIO 19 are needed at the Boosterpac k Headers:  
- Remove R32 and R33, populate R36 and R37 with 0 ohm resistors  
- The F28002x device's internal oscillator will need to be used

## User LEDs



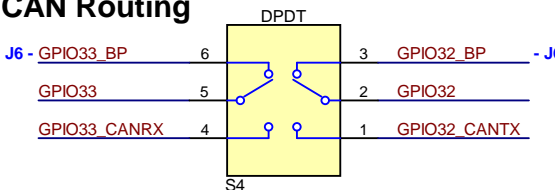
## Boot Mode Select



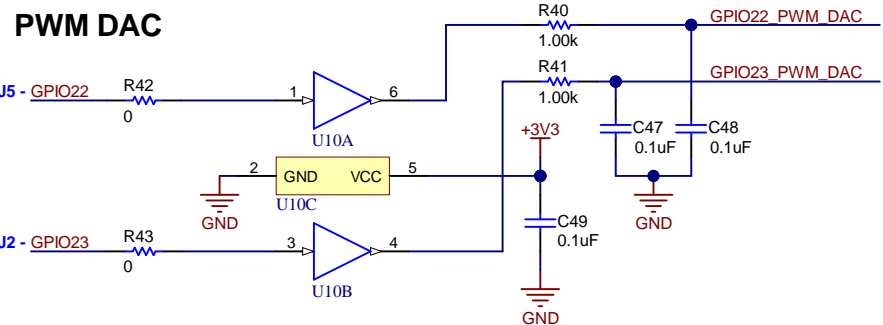
## Selected Boot Mode Chart

Mode #	GPIO24	GPIO32	Boot Mode
00	0	0	Boot from Parallel GPIO
01	0	1	Boot from SCI / Wait Mode
02	1	0	Boot from CAN
03	1	1	Boot from Flash

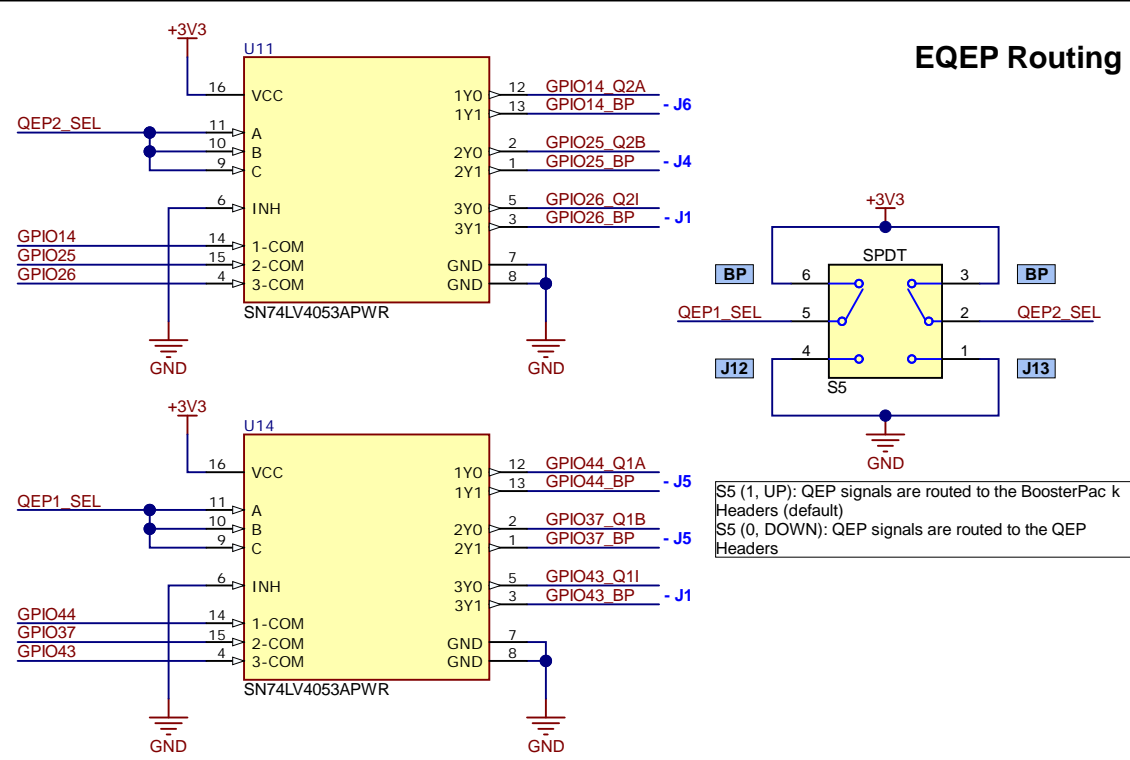
## CAN Routing



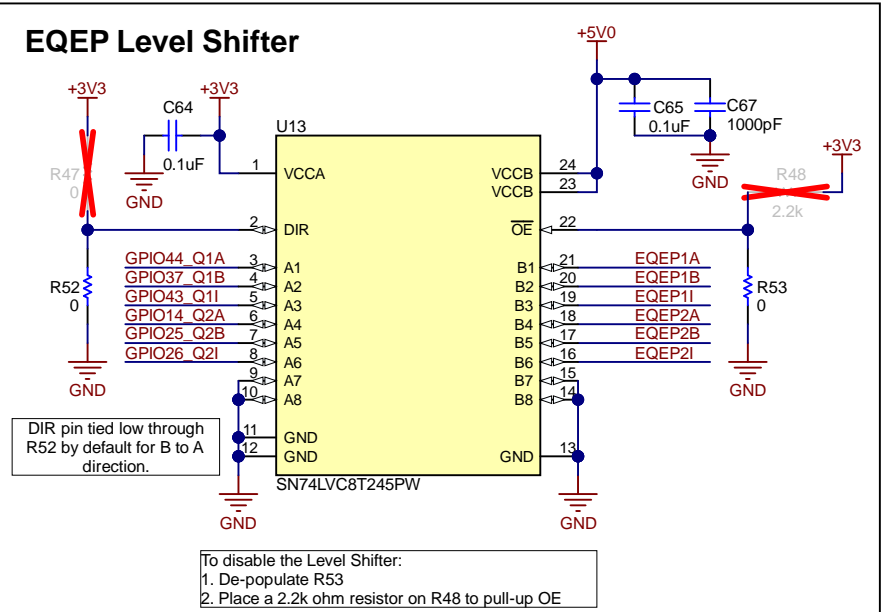
## PWM DAC



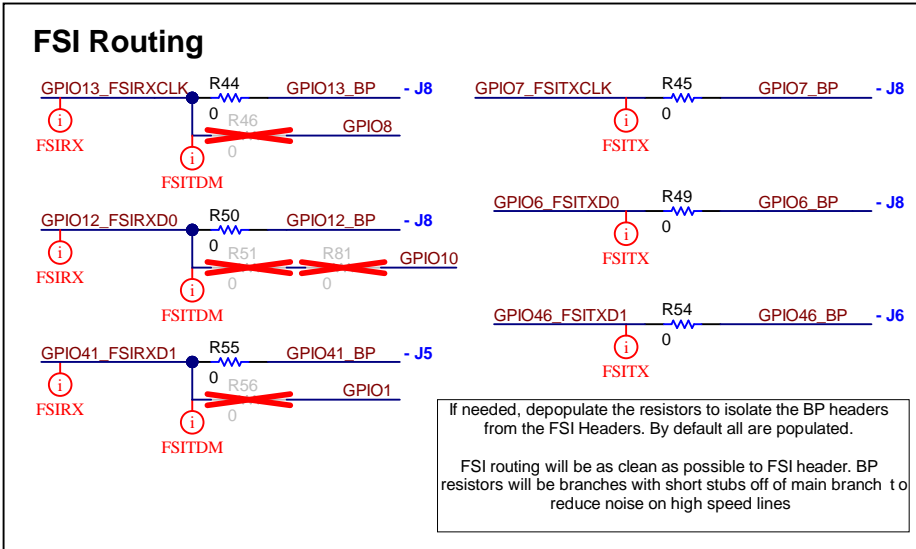
## EQEP Routing



## EQEP Level Shifter

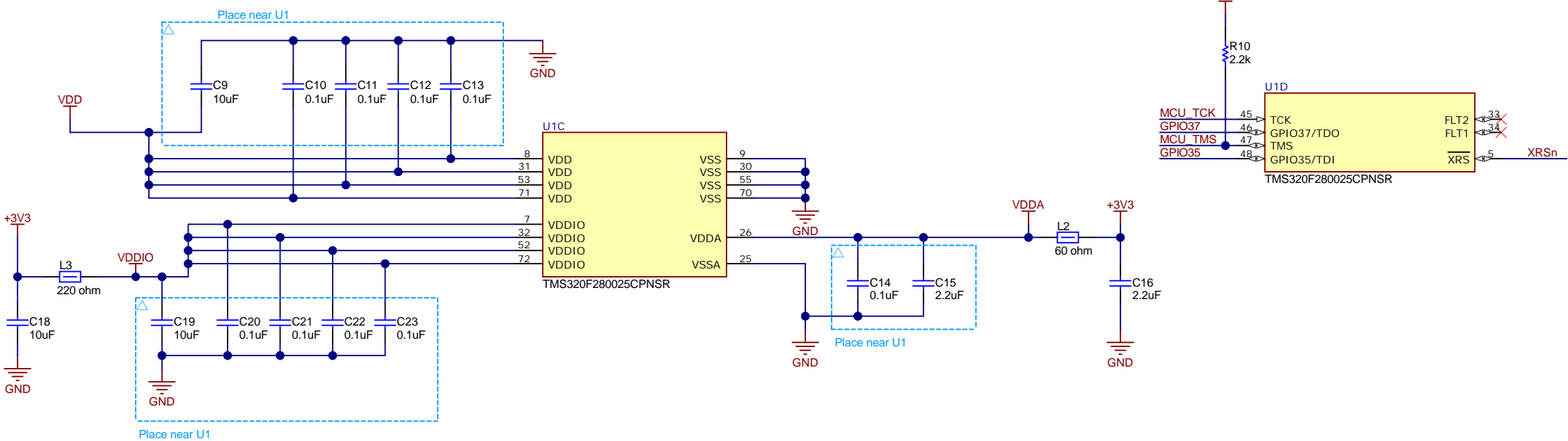


## FSI Routing

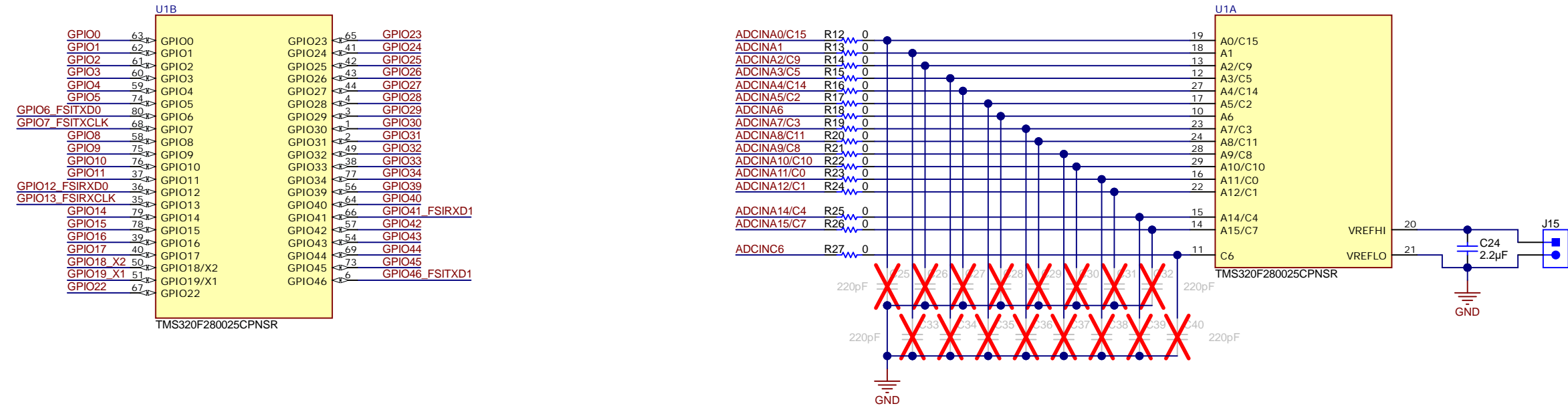
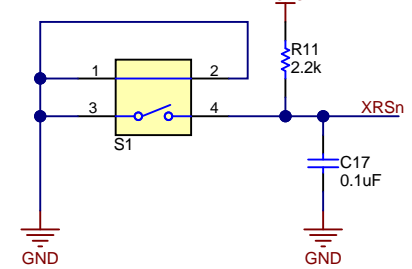


Texas Instruments and/or its licensors do not warrant the accuracy or completeness of this specification or any information contained therein. Texas Instruments and/or its licensors do not warrant that this design will meet the specifications, will be suitable for your application or fit for any particular purpose, or will operate in an implementation. Texas Instruments and/or its licensors do not warrant that the design is production worthy. You should completely validate and test your design implementation to confirm the system functionality for your application.

F28002x Device



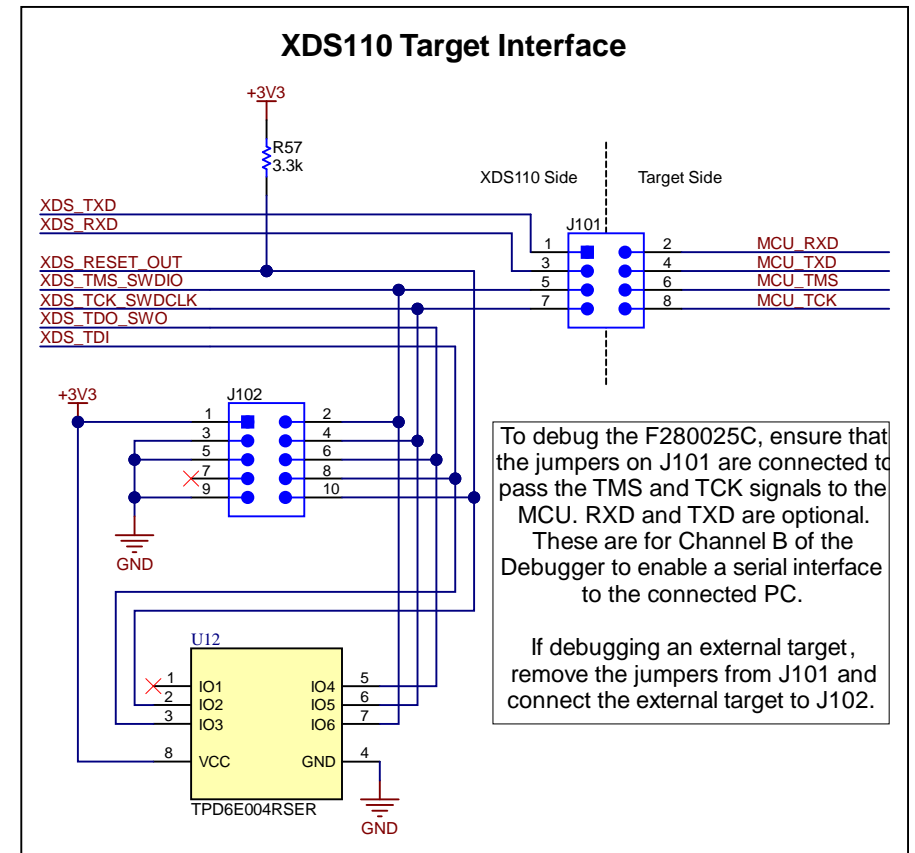
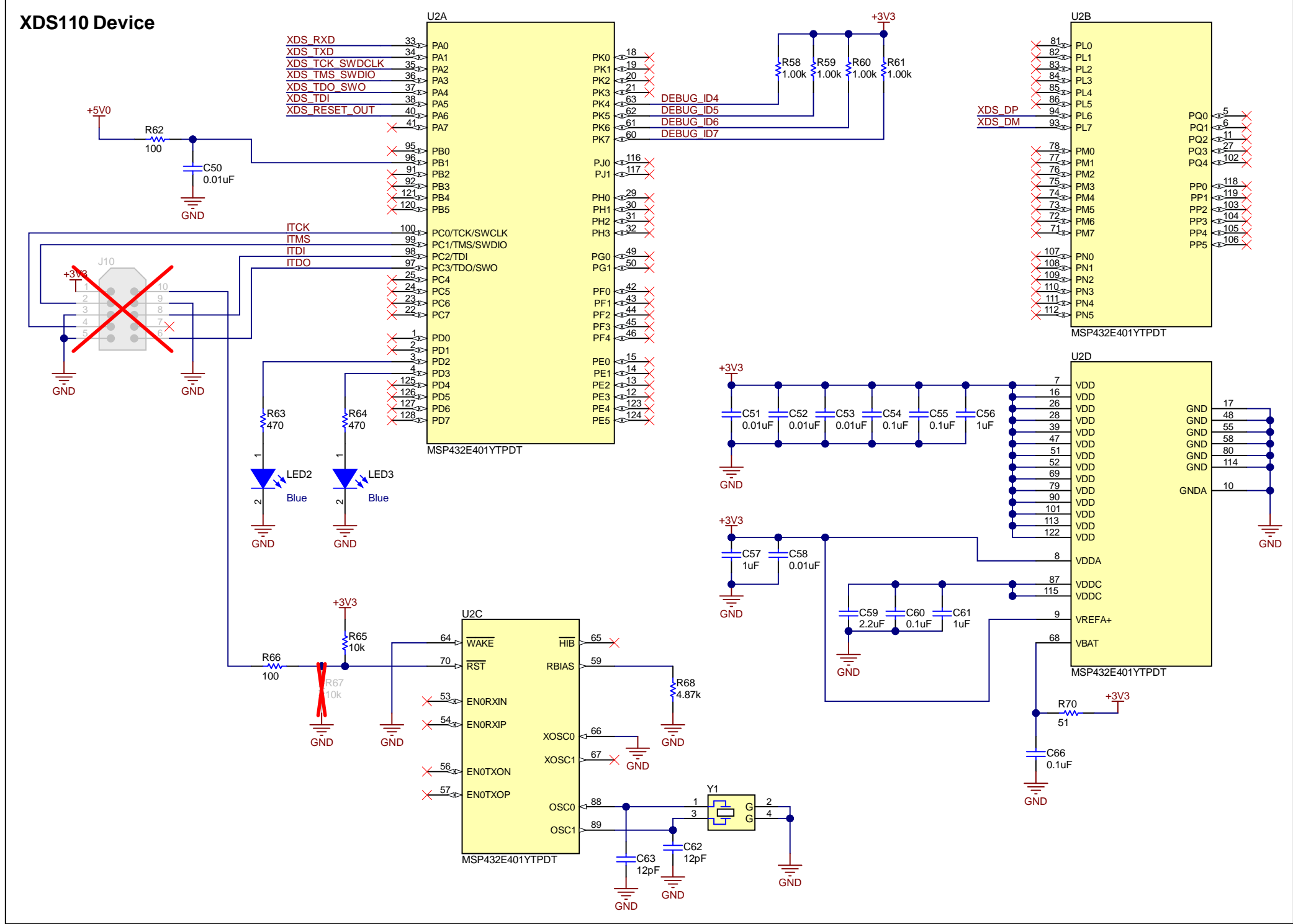
Reset Button



Texas Instruments and/or its licensors do not warrant the accuracy or completeness of this specification or any information contained therein. Texas Instruments and/or its licensors do not warrant that this design will meet the specifications, will be suitable for your application or fit for any particular purpose, or will operate in an implementation. Texas Instruments and/or its licensors do not warrant that the design is production worthy. You should completely validate and test your design implementation to confirm the system functionality for your application.

Orderable: LAUNCHXL-F280025C	Designed for: Public Release	Mod. Date: 8/18/2020
TID #: N/A	Project Title: LAUNCHXL-F280025C	
Number: MCU089	Rev: A	Sheet Title:
SVN Rev: Not in version control	Assembly Variant: 001	Sheet: 4 of 8
Drawn By:	File: MCU089A_F280025C_Device.SchDoc	Size: B
Engineer: Kevin Allen	Contact: http://www.ti.com/support	http://www.ti.com
		© Texas Instruments 2020





Texas Instruments and/or its licensors do not warrant the accuracy or completeness of this specification or any information contained therein. Texas Instruments and/or its licensors do not warrant that this design will meet the specifications, will be suitable for your application or fit for any particular purpose, or will operate in an implementation. Texas Instruments and/or its licensors do not warrant that the design is production worthy. You should completely validate and test your design implementation to confirm the system functionality for your application.

