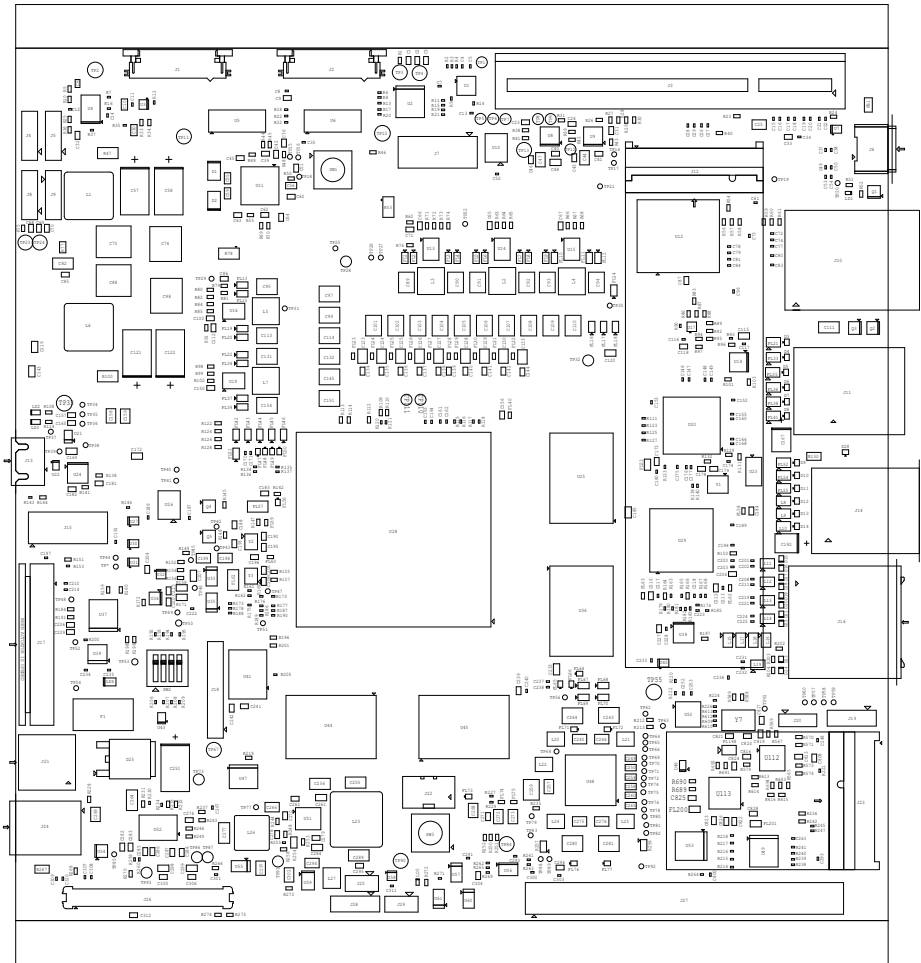


ASSEMBLY NOTES:- ASSEMBLY TOP

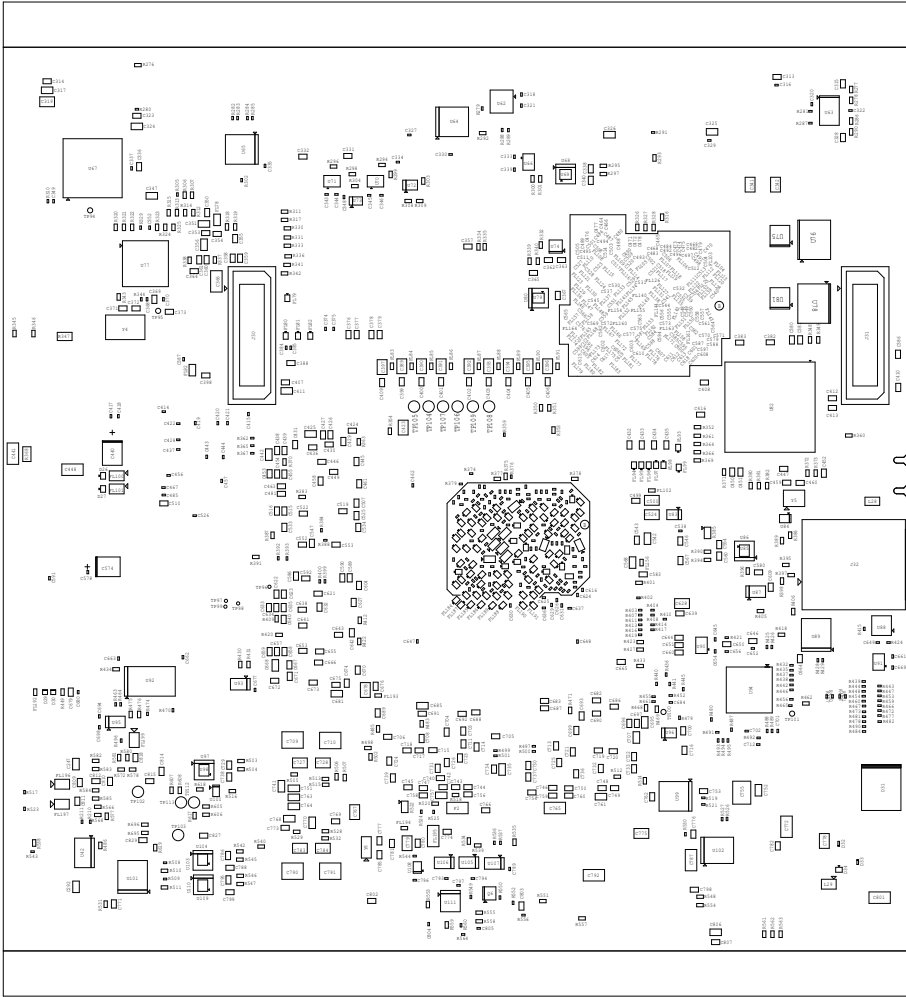
- 1- All MSL components should be baked as per JEDEC standard.
- 2- PCB should be baked at 120 degree for 8 hours.
- 3- Board assembly must comply with workmanship standards IPC-A-610 Class 2, unless otherwise specified.
- 4- These assemblies are ESD sensitive, ESD precautions shall be observed.
- 5- These assemblies must be clean and free from flux and all contaminants. Use of no clean flux is not acceptable.
- 6- Provide serial numbers to the assembled boards for identification.
- 7- The assembled board are wrapped in ESD Covers(individual) and packed securely before shipment.




		TEXAS INSTRUMENTS		PROC154E3
BOARD NAME:AM69 PROCESSOR STARTER KIT		REV: E3	DESCRIPTION: TOP ASSEMBLY	
SCALE: 1		DATE: 28/03/2023	SHEET OF23	

ASSEMBLY NOTES:- ASSEMBLY BOTTOM

- 1- All MSL components should be baked as per JEDEC standard.
- 2- PCB should be baked at 120 degree for 8 hours.
- 3- Board assembly must comply with workmanship standards IPC-A-610 Class 2, unless otherwise specified.
- 4- These assemblies are ESD sensitive, ESD precautions shall be observed.
- 5- These assemblies must be clean and free from flux and all contaminants. Use of no clean flux is not acceptable.
- 6- Provide serial numbers to the assembled boards for identification.
- 7- The assembled board are wrapped in ESD Covers(individual) and packed securely before shipment.



		TEXAS INSTRUMENTS		PROC154E3
BOARD NAME:AM69 PROCESSOR STARTER KIT		REV: E3	DESCRIPTION: BOTTOM ASSEMBLY	
SCALE: 1		DATE: 28/03/2023	SHEET OF 23	