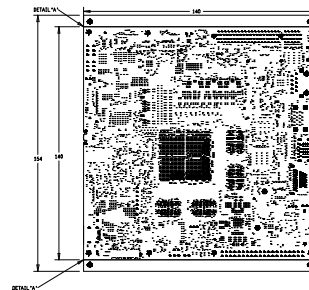



REVISIONS		
REV #	DESCRIPTION	DATE
REV #	CCN #	DDMMYY

BACKDRILL, BOTTOM TO L11-CHD4				
ALL UNITS ARE IN MILS				
FIGURE	SIZE	TOLERANCE	PLATED	QTY
1	7.00	+3.0/-3.0	PLATED	400

- | SHELL CANTILEVER TOP TO BOTTOM | | | | |
|--------------------------------|-------|------------|-------------|------------|
| ALL UNITS ARE IN METERS | | | | |
| LEGEND | DEPTH | WIND SPEED | PLATE NO. | PLATE SIZE |
| 1 | 7.00 | < 3.0 m/s | PLATE #6 | 2 |
| 2 | 8.00 | < 3.0 m/s | PLATE #6 | 2 |
| 3 | 9.00 | < 3.0 m/s | PLATE #2427 | 2 |
| 4 | 10.00 | < 3.0 m/s | PLATE #2427 | 2 |
| 5 | 11.00 | < 3.0 m/s | PLATE #16 | 2 |
| 6 | 12.00 | < 3.0 m/s | PLATE #16 | 2 |
| 7 | 13.00 | < 3.0 m/s | PLATE #16 | 2 |
| 8 | 14.00 | < 3.0 m/s | PLATE #16 | 2 |
| 9 | 15.00 | < 3.0 m/s | PLATE #16 | 2 |
| 10 | 16.00 | < 3.0 m/s | PLATE #16 | 2 |
| 11 | 17.00 | < 3.0 m/s | PLATE #16 | 2 |
| 12 | 18.00 | < 3.0 m/s | PLATE #16 | 2 |
| 13 | 19.00 | < 3.0 m/s | PLATE #16 | 2 |
| 14 | 20.00 | < 3.0 m/s | PLATE #16 | 2 |
| 15 | 21.00 | < 3.0 m/s | PLATE #16 | 2 |
| 16 | 22.00 | < 3.0 m/s | PLATE #16 | 2 |
| 17 | 23.00 | < 3.0 m/s | PLATE #16 | 2 |
| 18 | 24.00 | < 3.0 m/s | PLATE #16 | 2 |
| 19 | 25.00 | < 3.0 m/s | PLATE #16 | 2 |
| 20 | 26.00 | < 3.0 m/s | PLATE #16 | 2 |
| 21 | 27.00 | < 3.0 m/s | PLATE #16 | 2 |
| 22 | 28.00 | < 3.0 m/s | PLATE #16 | 2 |
| 23 | 29.00 | < 3.0 m/s | PLATE #16 | 2 |
| 24 | 30.00 | < 3.0 m/s | PLATE #16 | 2 |
| 25 | 31.00 | < 3.0 m/s | PLATE #16 | 2 |
| 26 | 32.00 | < 3.0 m/s | PLATE #16 | 2 |
| 27 | 33.00 | < 3.0 m/s | PLATE #16 | 2 |
| 28 | 34.00 | < 3.0 m/s | PLATE #16 | 2 |
| 29 | 35.00 | < 3.0 m/s | PLATE #16 | 2 |
| 30 | 36.00 | < 3.0 m/s | PLATE #16 | 2 |
| 31 | 37.00 | < 3.0 m/s | PLATE #16 | 2 |
| 32 | 38.00 | < 3.0 m/s | PLATE #16 | 2 |
| 33 | 39.00 | < 3.0 m/s | PLATE #16 | 2 |
| 34 | 40.00 | < 3.0 m/s | PLATE #16 | 2 |
| 35 | 41.00 | < 3.0 m/s | PLATE #16 | 2 |
| 36 | 42.00 | < 3.0 m/s | PLATE #16 | 2 |
| 37 | 43.00 | < 3.0 m/s | PLATE #16 | 2 |
| 38 | 44.00 | < 3.0 m/s | PLATE #16 | 2 |
| 39 | 45.00 | < 3.0 m/s | PLATE #16 | 2 |
| 40 | 46.00 | < 3.0 m/s | PLATE #16 | 2 |
| 41 | 47.00 | < 3.0 m/s | PLATE #16 | 2 |
| 42 | 48.00 | < 3.0 m/s | PLATE #16 | 2 |
| 43 | 49.00 | < 3.0 m/s | PLATE #16 | 2 |
| 44 | 50.00 | < 3.0 m/s | PLATE #16 | 2 |
| 45 | 51.00 | < 3.0 m/s | PLATE #16 | 2 |
| 46 | 52.00 | < 3.0 m/s | PLATE #16 | 2 |
| 47 | 53.00 | < 3.0 m/s | PLATE #16 | 2 |
| 48 | 54.00 | < 3.0 m/s | PLATE #16 | 2 |
| 49 | 55.00 | < 3.0 m/s | PLATE #16 | 2 |
| 50 | 56.00 | < 3.0 m/s | PLATE #16 | 2 |
| 51 | 57.00 | < 3.0 m/s | PLATE #16 | 2 |
| 52 | 58.00 | < 3.0 m/s | PLATE #16 | 2 |
| 53 | 59.00 | < 3.0 m/s | PLATE #16 | 2 |
| 54 | 60.00 | < 3.0 m/s | PLATE #16 | 2 |
| 55 | 61.00 | < 3.0 m/s | PLATE #16 | 2 |
| 56 | 62.00 | < 3.0 m/s | PLATE #16 | 2 |
| 57 | 63.00 | < 3.0 m/s | PLATE #16 | 2 |
| 58 | 64.00 | < 3.0 m/s | PLATE #16 | 2 |
| 59 | 65.00 | < 3.0 m/s | PLATE #16 | 2 |
| 60 | 66.00 | < 3.0 m/s | PLATE #16 | 2 |
| 61 | 67.00 | < 3.0 m/s | PLATE #16 | 2 |
| 62 | 68.00 | < 3.0 m/s | PLATE #16 | 2 |
| 63 | 69.00 | < 3.0 m/s | PLATE #16 | 2 |
| 64 | 70.00 | < 3.0 m/s | PLATE #16 | 2 |
| 65 | 71.00 | < 3.0 m/s | PLATE #16 | 2 |
| 66 | 72.00 | < 3.0 m/s | PLATE #16 | 2 |
| 67 | 73.00 | < 3.0 m/s | PLATE #16 | 2 |
| 68 | 74.00 | < 3.0 m/s | PLATE #16 | 2 |
| 69 | 75.00 | < 3.0 m/s | PLATE #16 | |



DEFINITION SPECIFICATIONS						
S/L#	TYPE	LAYER	TRACEWIDTH[MIL]	SPACING[MIL]	IMPEDANCE[Ohm]	REF. LAYER
01	EDGE COUPLED MICROSTRIP	L1/L16	4.7	5.0	120	L3/L14
02	EDGE COUPLED MICROSTRIP	L1/L18	4.7	5.0	100	L2/L15
03	EDGE COUPLED MICROSTRIP	L1/L6	4.7	5.7	90	L2/L15
04	EDGE COUPLED MICROSTRIP	L1/L18	7.4	5.0	85	L2/L15
05	EDGE COUPLED MICROSTRIP	L1	9	5	80	L2
06	MICROSTRIP	L1	19	-	40	L2
07	MICROSTRIP	L1/L18	13	-	50	L2/L15
08	EDGE COUPLED STRIPLINE	L3,L3,L10	3	5	100	L2/L14, L4/L16, L3/L15, L1/L13, L1/L13, L3/L15
09	EDGE COUPLED STRIPLINE	L10,L12,L14	3	5	100	L3/L15, L1/L13, L1/L13, L3/L15
10	EDGE COUPLED STRIPLINE	L1/L4	4.3	5	85	L3/L15
11	EDGE COUPLED STRIPLINE	L3,L5	5	5	80	L2/L4, L4/L16
12	EDGE COUPLED STRIPLINE	L7	7.3	5.4	66	L1/L16
13	EDGE COUPLED STRIPLINE	L3	3	10	132	L2/L4
14	STRIPLINE	L3,L3,L10	3.0	-	90	L2/L4, L4/L16, L3/L15, L1/L13, L1/L13, L3/L15
15	STRIPLINE	L3	3.0	-	20	L2/L4
16	STRIPLINE	L3	3	-	66	L2/L4
17	STRIPLINE	L3,L3,L10	6	-	40	L2/L4, L4/L16, L3/L15

SIGNATURES		DATE		 TEXAS INSTRUMENTS		PROC134C1	
LAYOUT BY GAK/RSM		121022					
REVIEWED BY ZA		121022		AM69 PROCESSOR STARTER KIT			
APPROVED BY AMB		121022					
				SIZE D		Rev E1	
				SCALE: NONE		SHEET 1 OF 23	