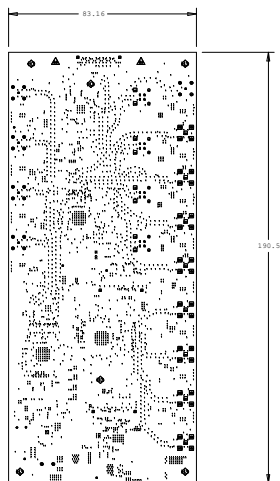


REVISIONS		
REV #	DESCRIPTION	DATE
REV #	CCN #	211220

FABRICATION NOTES:

2. FABRICATE PCB IN ACCORDANCE WITH IPC-6012C, CLASS 2 PER IPC-6011.
3. MATERIALS:
1. LAMINATE AND PREPREG (B-2) TYPE TO BE IN ACCORDANCE WITH IPC-4101/126, (MIN. T<sub>g</sub> 170)
2. COFFER PULL TO BE IN ACCORDANCE WITH IPC-M-150, UNLESS OTHERWISE SPECIFIED, COFFER PULL THICKNESS TOLERANCE SHALL BE AS PER IPC-6012C TABLE NO.1-7 AND 3-8.
4. ALL HOLES SHALL BE LOCATED WITHIN 0.1508" DIAMETER OF THEIR POSITION. LAYER TO LAYER REGISTRATION SHALL BE WITHIN 0.1508".
5. BOM AND TEST SET SHALL NOT EXCEED MORE THAN 0.75% OF THE DESIGN LENGTH.
6. CONDUCTOR HOLE SHALL BE NOT LESS THAN 30 TIMES ITS CALIBER SIZE, HOLE FOR MATCHING IMPEDANCE SHALL BE ACCORDING TO THE MODIFIED WITNESS AND SPECING.
7. ADH WAVE SHALL BE READABLE ON THE SURFACE OF THE LAMINATE IN 10 TIMES OF THE WAVELENGTH.
8. FURNISH OPTICAL INSPECTION OF ALL THE LAYERS IS REQUIRED.
9. FINISH:
1. ALL EXPOSED CONDUCTIVE TRACKING AREAS NOT COVERED WITH SOLDER MASK OR OTHER PLATING SHALL BE BRIG. ELECTROPLATED NICKEL/IMMERSION GOLD. ELECTROPLATED NICKEL SHALL BE 0.04-0.05 MICRONS. THICKNESS SHALL BE 0.04-0.05 MICRONS OF NICKEL/IMMERSION GOLD SURFACE.
2. APPLY LIQUID FLOW IMMAGABLE SOLDER MASK PER IPC-8460, CLASS B, TO BOTH SIDES OF THE BOARD OVER APER COVER.
3. ALL THE SURFACE OF THE BOARD SHALL BE FILLED WITH NON CONDUCTIVE INK AND CAN PLATED.
4. ALL OTHER VIA HOLES SHALL BE FILLED WITH NON CONDUCTIVE INK AND COVERED WITH SOLDER MASK.
5. ALL UNCOVERED HOLE SHALL BE FILLED WITH NON CONDUCTIVE INK AND COVERED WITH SOLDER MASK. THERE SHALL BE 0.001(0.003)" PER SIZE SHALL BE REDUCED IF REQUIRED.
10. SOLDERMASK SHALL BE WHITE, PERMANENT, ORGANIC, NON-CONDUCTIVE INK. THERE SHALL BE NO SOLDERMASK ON ANY FERROUS COMPONENT PAD. CLIPPING OF SILE SCREEN SHALL BE ALLOWED IF THE SILE SCREEN FALLS ON SOLDERABLE AREA.
11. SURFACE AND VIA HOLES FINISH SHALL NOT BE LESS THAN 200 (5.0003)".
11. ALL HOLES SURROUNDED BY LAND <0.010" SHALL BE COMPLIANT TO IPC6012, CLASS 2.
12. MARKING:
1. BOARD SHALL MEET THE REQUIREMENTS OF UL-786 WITH FLAMMABILITY RATING OF MINIMUM 94V-0. UL LOGO, MANUFACTURER'S IDENTIFICATION AND DATE CODE LETTER SHAL BE PERMANENT IN SILVERCOAT.
13. TEST REQUIREMENTS:
1. 100% NET LIST ELECTRICAL VERIFICATION USING MINIMUM SUPPLIED IPC-334 TEST SET FOR OPENS AND SHORTS.
14. TRAVEL IS ALLOWED ONLY IN THE PANEL FRAME, NOT IN THE CIRCUIT AREA.
15. TEAR DROPS SHALL BE ADDED ON INTERNAL AND EXTERNAL LAYER FOR ALL THE VIA'S AND THROUGH HOLE PADS.
16. FINISHED PCB THICKNESS SHALL BE 0.0151" (+0.001"/-0.004").
17. WAX TRACE WITH/STARCH ON BOARD IS 0.0035"/0.004".
18. ALL THE IMPEDANCE SHALL BE MATCHED AS PER IMPEDANCE TABLE WITH 3+/-10% TOLERANCE.
19. ALL UNCONNECTED VIA'S SHALL BE SUPPRESSED IN INTERNAL LAYERS.




DRILL CHART: TOP 10 BOLT				
ALL UNITS ARE IN MILS				
FIGURE	SIZE	TOLERANCE	PLATED	QTY
•	8.0	+3.0/-3.0	PLATED	27
•	32.0	+2.0/-2.0	PLATED	16
•	40.0	+2.0/-2.0	PLATE 8	8
•	40.0	+3.0/-3.0	PLATE 7	7
•	48.0	+2.0/-2.0	PLATE 8	8
•	56.0	+2.0/-2.0	PLATE 20	20
•	56.0	+3.0/-3.0	PLATE	2
■	60.0	+2.0/-2.0	PLATE 8	8
■	62.0	+2.0/-2.0	PLATE 8	8
■	74.0	+2.0/-2.0	PLATE	32
•	40.0	+3.0/-3.0	NON-PLATED	6
◆	126.0	+3.0/-3.0	NON-PLATED	6
◆	166.0	+3.0/-3.0	NON-PLATED	2

### IMPEDANCE SPECIFICATIONS

S#	TYPE	LAYER	TRACEWIDTH (mils)	SPACING (mils)	IMPEDANCE (ohms)	REF. LAYER
01	COPLANAR MICROSTRIP	L1	17.5	12	50	L3
02	MICROSTRIP	L1, L2	6.0	NA	50	L2, L7
03	EDGE COUPLED MICROSTRIP	L1, L2	4.0	6.5	100	L2, L7
04	EDGE COUPLED MICROSTRIP	L1, L2	5.1	11	100	L2, L7
05	STRIPLINE	L1, L2	4.0	NA	50	L2/ L4, L5/ L7
06	EDGE COUPLED STRIPLINE	L1, L2	3.5	10.0	100	L2/ L4, L5/ L7

## LAYER STACKUP

LAYER NAME	FINISHED Cu	X-SECTION	DIELECTRIC THICKNESS
			(INCHES)
PRIMARY SIDE SILKSCREEN			
PRIMARY SIDE SOLDERMASK			
L01	PRIMARY SIDE	1oz.	
L02	GROUND-PLANE-1	1oz.	0.0036
L03	INNER-SIGNAL-1	1oz.	0.0051
L04	POWER-PLANE-1	1oz.	0.0048
L05	GROUND-PLANE-2	1oz.	0.0326
L06	INNER-SIGNAL-2	1oz.	0.0048
L07	GROUND-PLANE-3	1oz.	0.0051
L08	SECONDARY SIDE	1oz.	0.0036
SECONDARY SIDE SOLDERMASK			
SECONDARY SIDE SILKSCREEN			

SIGNATURES		DATE		 TEXAS INSTRUMENTS	PROC082
LAYOUT BY	SS	110121			
REVIEWED BY	ZA	110121			
APPROVED BY	AMS	110121			
				PROC082E3	
				SIZE D	Rev E3
				SCALE: NONE	SHEET 1 OF 15