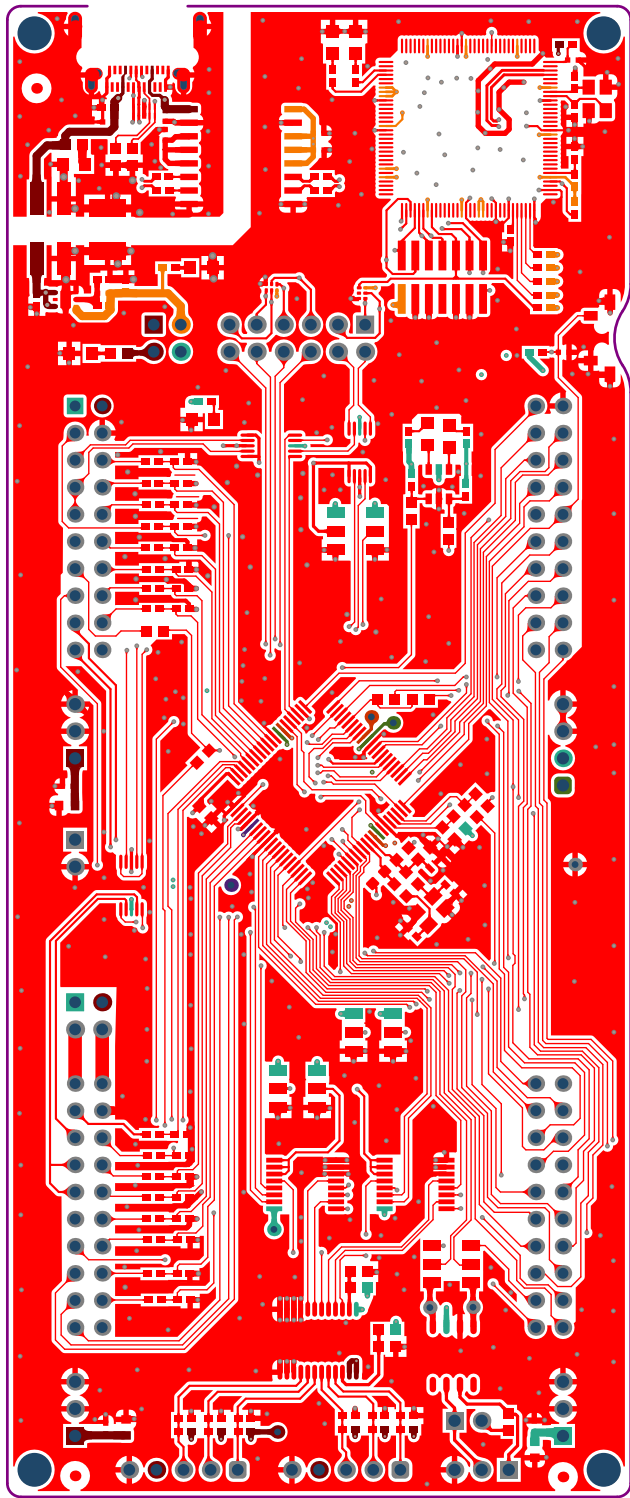
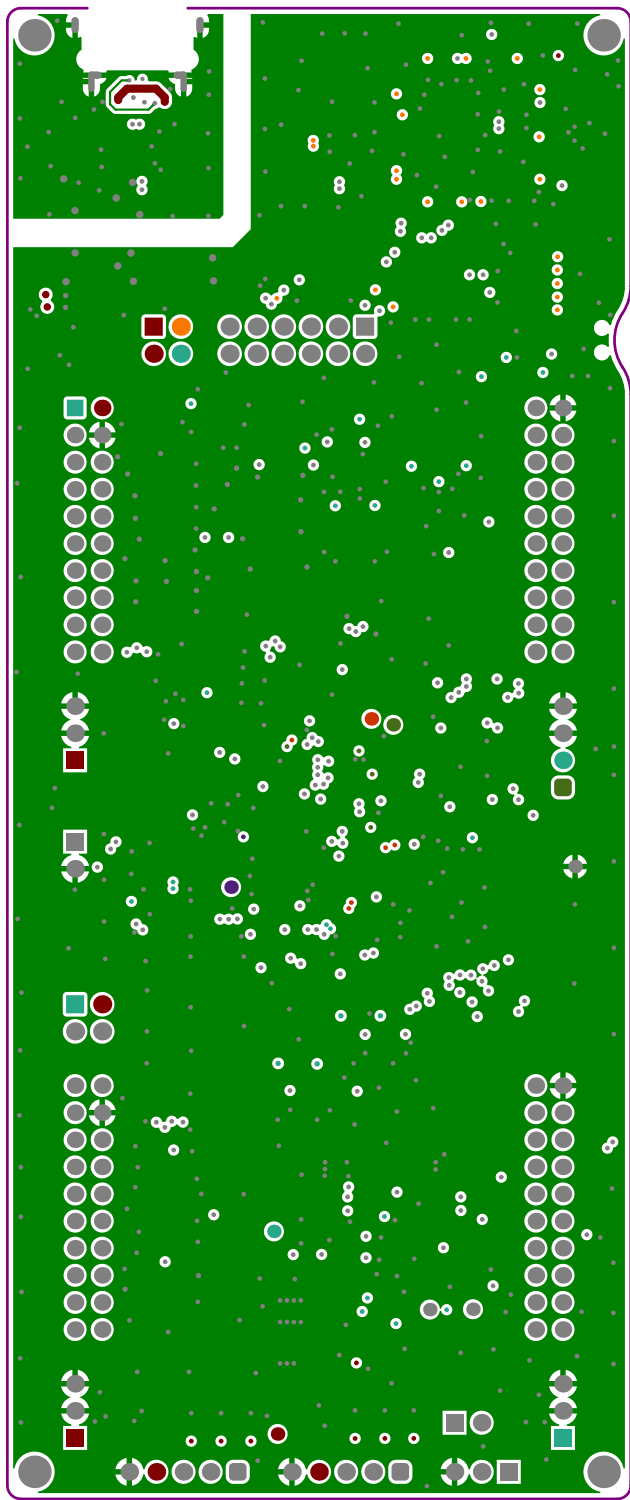


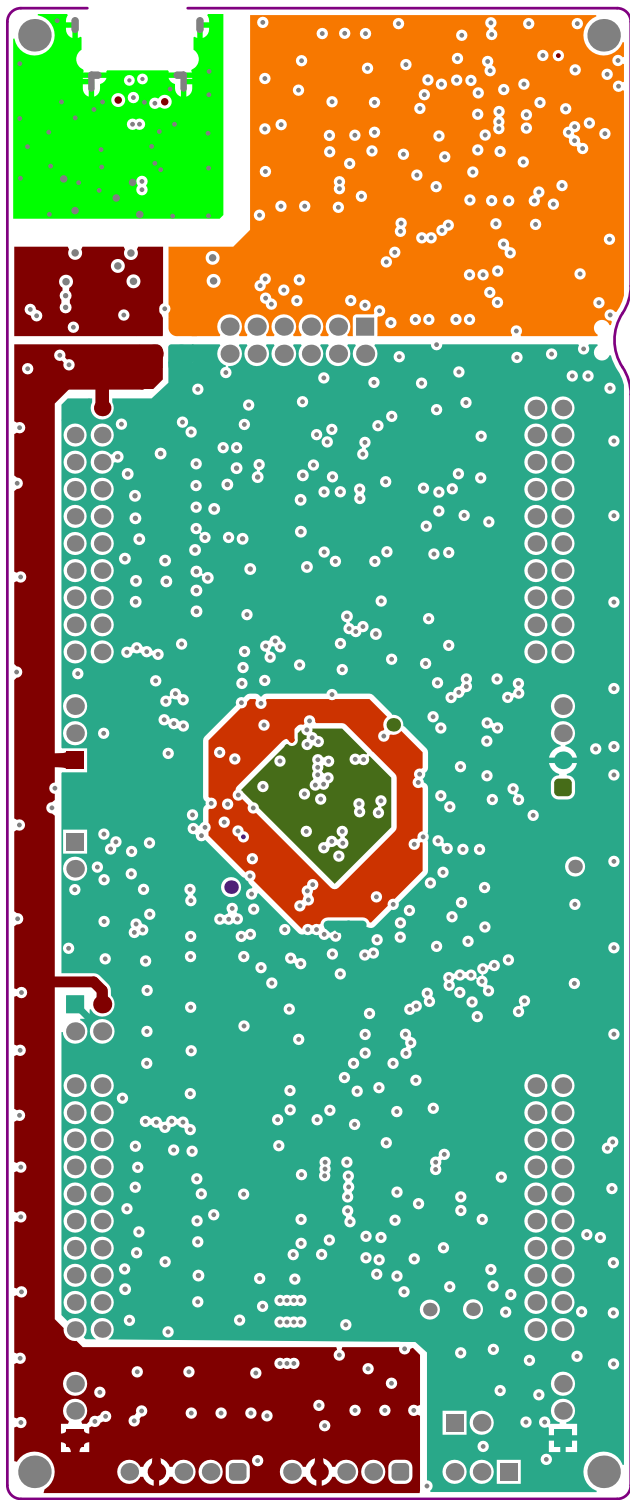
ALL ARTWORK VIEWED FROM TOP SIDE	BOARD #: MCU110	REV: A	SVN REV: 42c87052b884e9ec54069d3af18ed8ddbea16290
LAYER NAME = Top Solder Information	TID #: .TID		
PLOT NAME = Top Solder Mask	GENERATED : 6/1/2023 12:13:07 AM	TEXAS INSTRUMENTS	



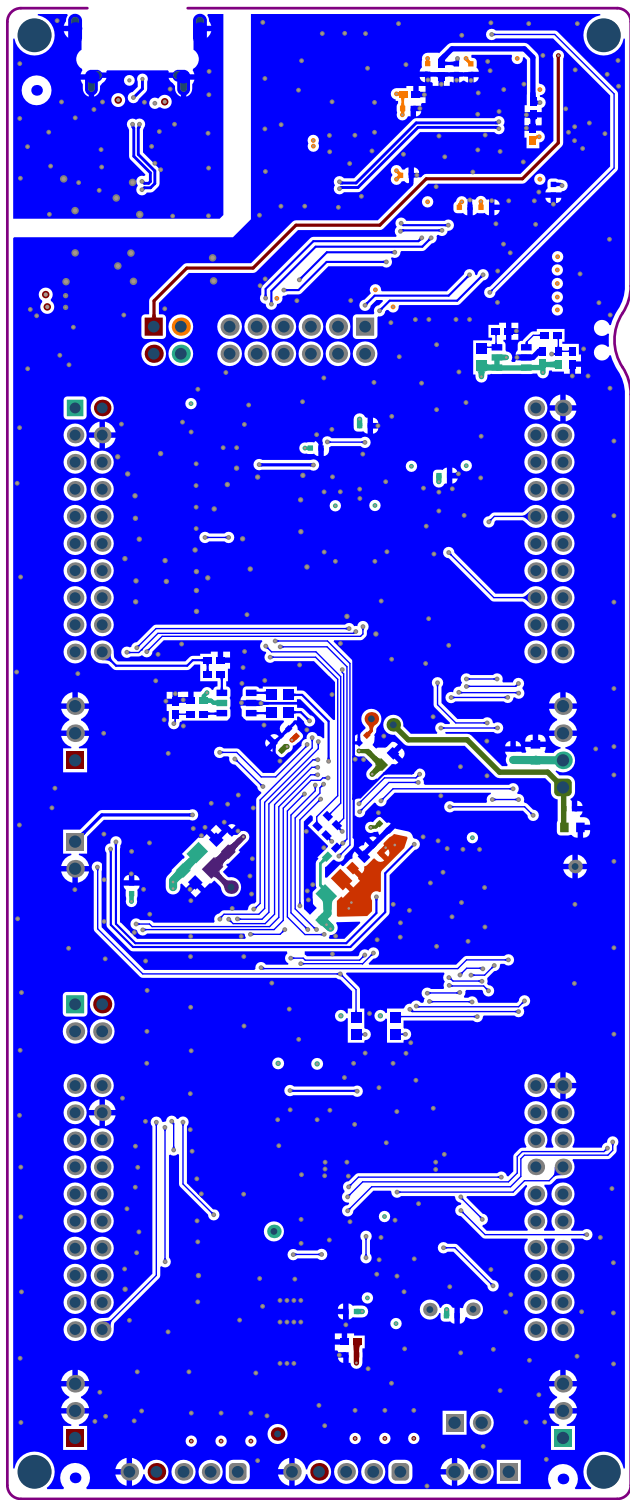
ALL ARTWORK VIEWED FROM TOP SIDE	BOARD #: MCU110	REV: A	SVN REV: 42c87052b884e9ec54069d8af18ed8ddbea16290
LAYER NAME = M11 Top Signal	TID #: .TID		
PLOT NAME = Top Signal	GENERATED : 6/1/2023 12:13:07 AM	TEXAS INSTRUMENTS	



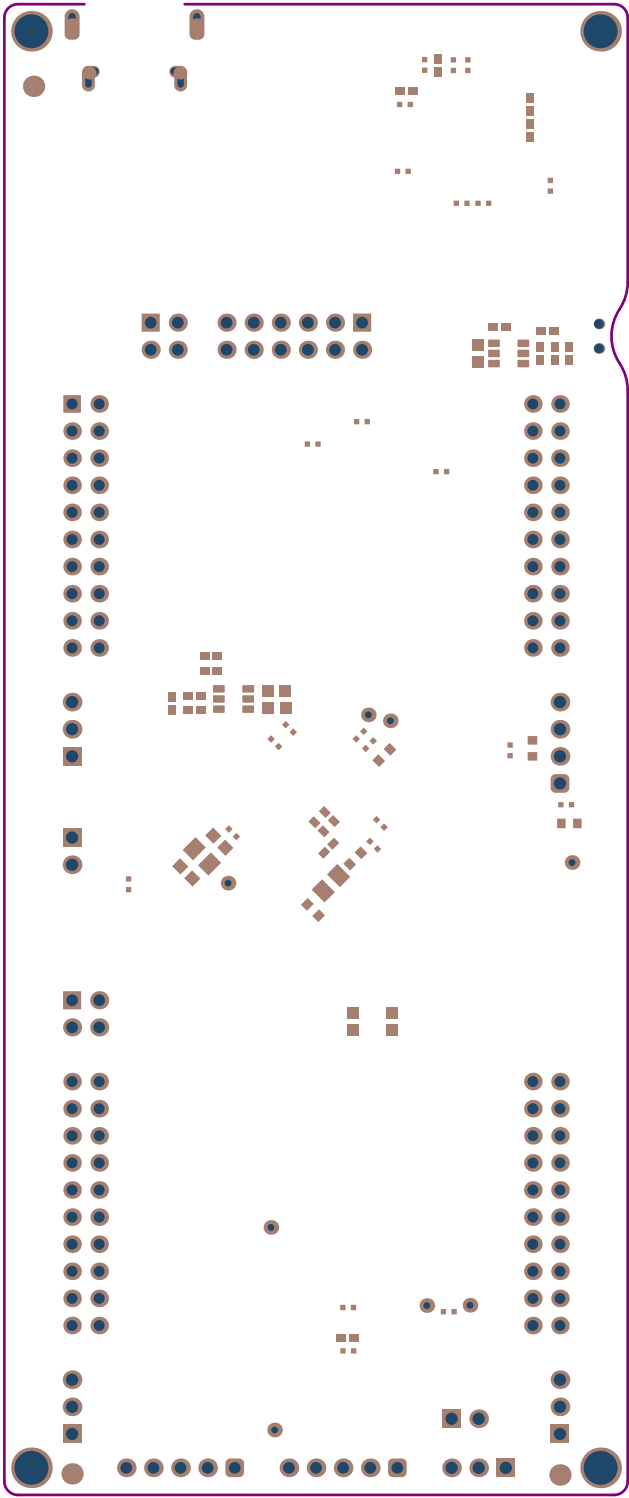
ALL ARTWORK VIEWED FROM TOP SIDE	BOARD #: MCU110	REV: A	SVN REV: 42c87052b884e9ec54069d8af18ed8ddbea16290
LAYER NAME = M11 Gerber Information	TID #: .TID		
PLOT NAME = GND	GENERATED : 6/1/2023 12:13:07 AM	TEXAS INSTRUMENTS	



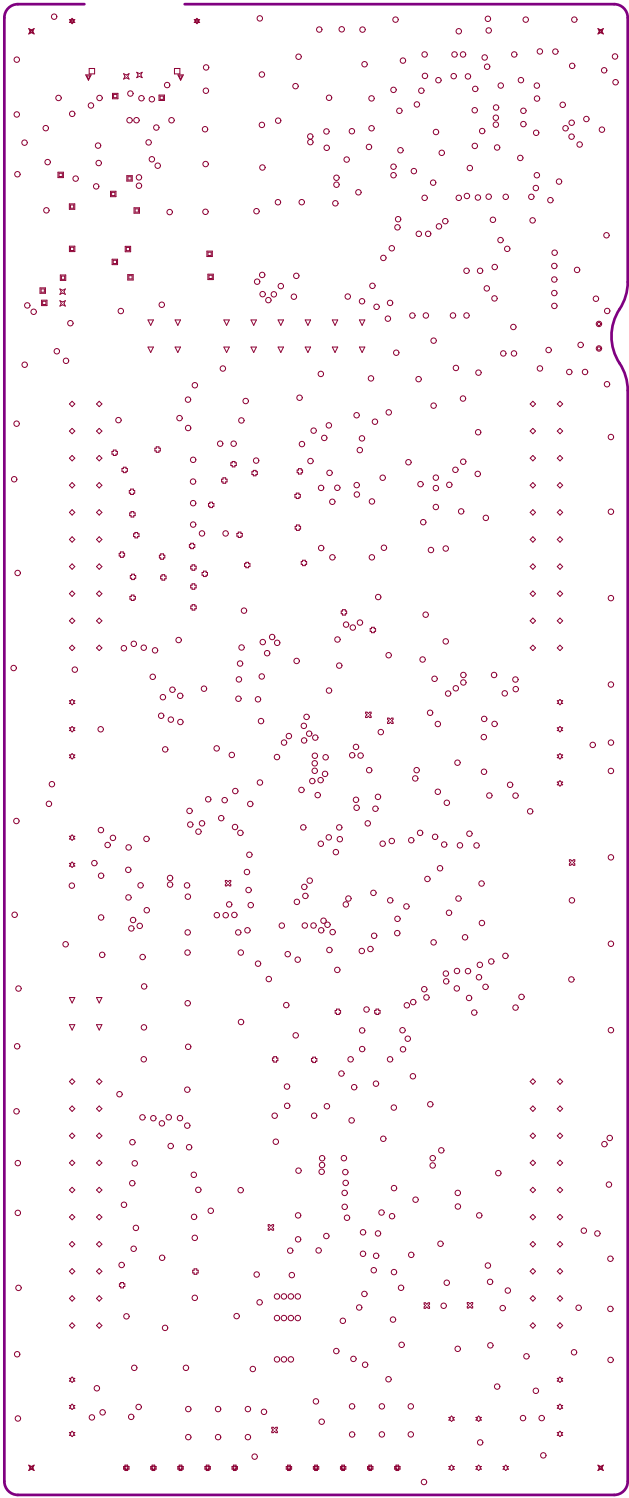
ALL ARTWORK VIEWED FROM TOP SIDE	BOARD #: MCU110	REV: A	SVN REV: 42c87052b884e9ec54069d8af18ed8ddbea16290
LAYER NAME = M11 Gerber Information	TID #: .TID		
PLOT NAME = PWR	GENERATED : 6/1/2023 12:13:07 AM	TEXAS INSTRUMENTS	



ALL ARTWORK VIEWED FROM TOP SIDE	BOARD #: MCU110	REV: A	SVN REV: 42c87052b884e9ec54069d8af18ed8ddbea16290
LAYER NAME = M1 Bottom Signal	TID #: .TID		
PLOT NAME = Bottom Signal	GENERATED : 6/1/2023 12:13:07 AM	TEXAS INSTRUMENTS	



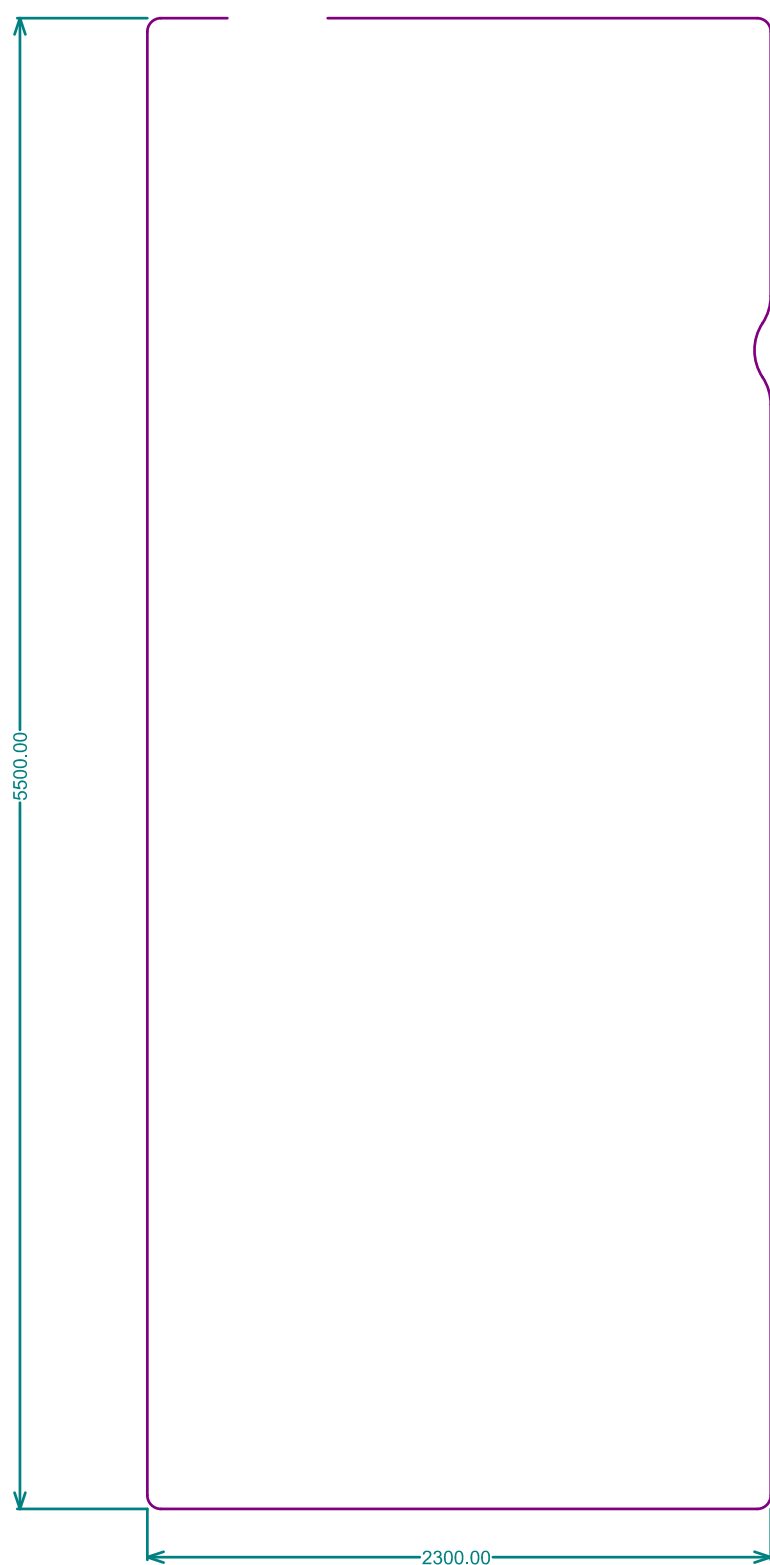
ALL ARTWORK VIEWED FROM TOP SIDE	BOARD #: MCU110	REV: A	SVN REV: 42c87052b884e9ec54069d8af18ed8ddbea16290
LAYER NAME = Bottom Solder Mask	TID #: .TID		
PLOT NAME = Bottom Solder Mask	GENERATED : 6/1/2023 12:13:07 AM	TEXAS INSTRUMENTS	



Symbol	Count	Hole Size	Plated	Hole Type	Drill Layer Pair	Via/Pad	Pad Shape	Template	Description	Hole Tolerance (+)	Hole Tolerance (-)	Hole Length	Routed Path Length
	2	0.700mm (27.56mil)	PTH	Slot	Top Signal - Bottom Signal	Pad	Rounded Rectangle	r125_70h70_125r100m125_70p-1_-1				1,250mm (49,21mil)	0,550mm (21,65mil)
	2	0.900mm (35.43mil)	NPTH	Round	Top Signal - Bottom Signal	Pad	Rounded	c-100hn90m95				-	-
	2	1.500mm (59.06mil)	PTH	Slot	Top Signal - Bottom Signal	Pad	Rounded Rectangle	r70_150h150_70r100m70_150p-1_-1				0.700mm (27.56mil)	-0.800mm (-31.50mil)
	2	1.900mm (74.80mil)	PTH	Slot	Top Signal - Bottom Signal	Pad	Rounded Rectangle	r60_190h190_60r100m60_190p-1_-1				0.600mm (23.62mil)	-1.300mm (-51.18mil)
	4	0.200mm (7.87mil)	PTH	Round	Top Signal - Bottom Signal	Via	Rounded	(Mixed)				-	-
	4	3.175mm (125.00mil)	NPTH	Round	Top Signal - Bottom Signal	Pad	Rounded	c305hn318m343				-	-
	8	0.635mm (25.00mil)	PTH	Round	Top Signal - Bottom Signal	Pad	Rounded	c127h64				-	-
	10	1.100mm (43.31mil)	PTH	Round	Top Signal - Bottom Signal	Pad	(Mixed)	(Mixed)		0.050mm (1.97mil)	0.050mm (1.97mil)	-	-
	16	0.400mm (15.75mil)	PTH	Round	Top Signal - Bottom Signal	Via	Rounded	v70h40m0mx0				-	-
	20	1.100mm (43.31mil)	PTH	Round	Top Signal - Bottom Signal	Pad	(Mixed)	(Mixed)				-	-
	20	1.150mm (45.28mil)	PTH	Round	Top Signal - Bottom Signal	Pad	(Mixed)	(Mixed)				-	-
	34	0.300mm (11.81mil)	PTH	Round	Top Signal - Bottom Signal	Via	Rounded	v50h30m0mx0				-	-
	80	1.020mm (40.16mil)	PTH	Round	Top Signal - Bottom Signal	Pad	(Mixed)	(Mixed)				-	-
	660	0.250mm (9.84mil)	PTH	Round	Top Signal - Bottom Signal	Via	Rounded	v45h25m0mx0				-	-
	864 Total												

Slot definitions : Routed Path Length = Calculated from tool start centre position to tool end centre position.
Hole Length = Routed Path Length + Tool Size = Slot length as defined in the PCB layout

ALL ARTWORK VIEWED FROM TOP SIDE	BOARD #: MCU110	REV: A	SVN REV: 42c87052b884e9ec54069d38af18ed8ddbea16290
LAYER NAME = Drill Drawing	TID #: .TID		
PLOT NAME = Drill Drawing	GENERATED : 6/1/2023 12:13:08 AM	TEXAS INSTRUMENTS	



ALL ARTWORK VIEWED FROM TOP SIDE	BOARD #: MCU110	REV: A	SVN REV: 42c87052b884e9ec54069d8af18ed8ddbea16290
LAYER NAME = M12 Gerber Dimensions	TID #: .TID		
PLOT NAME = Board Dimensions	GENERATED : 6/1/2023 12:13:09 AM		TEXAS INSTRUMENTS

