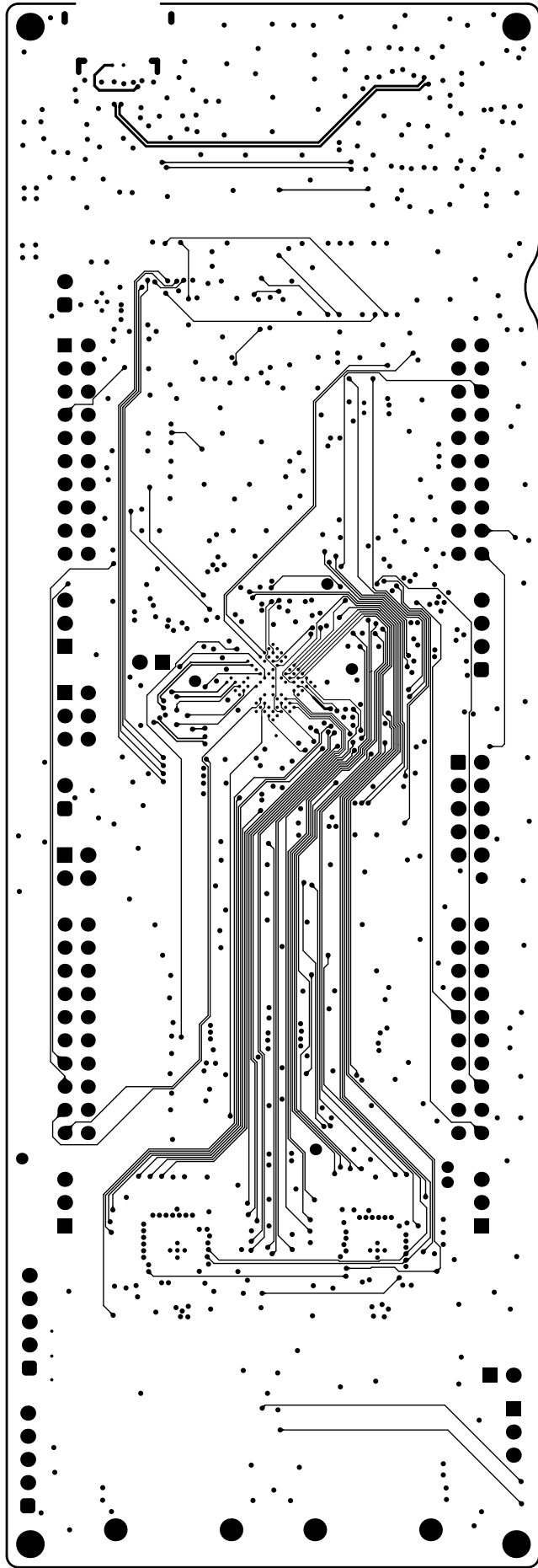
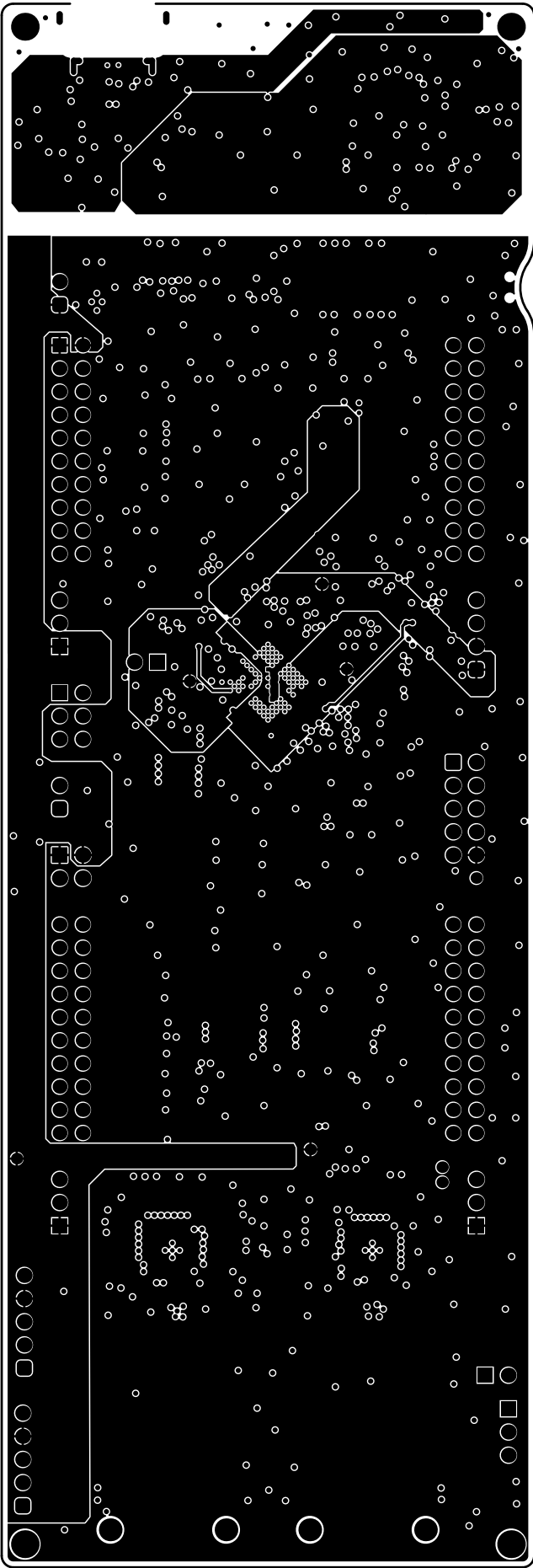
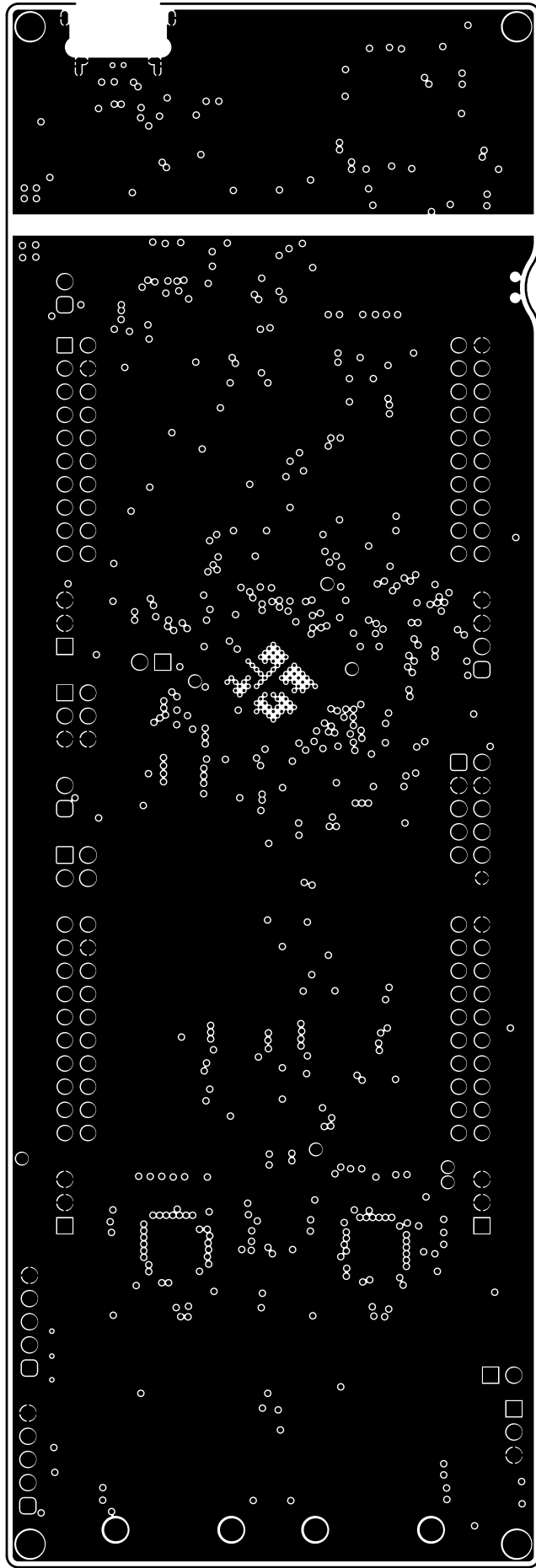


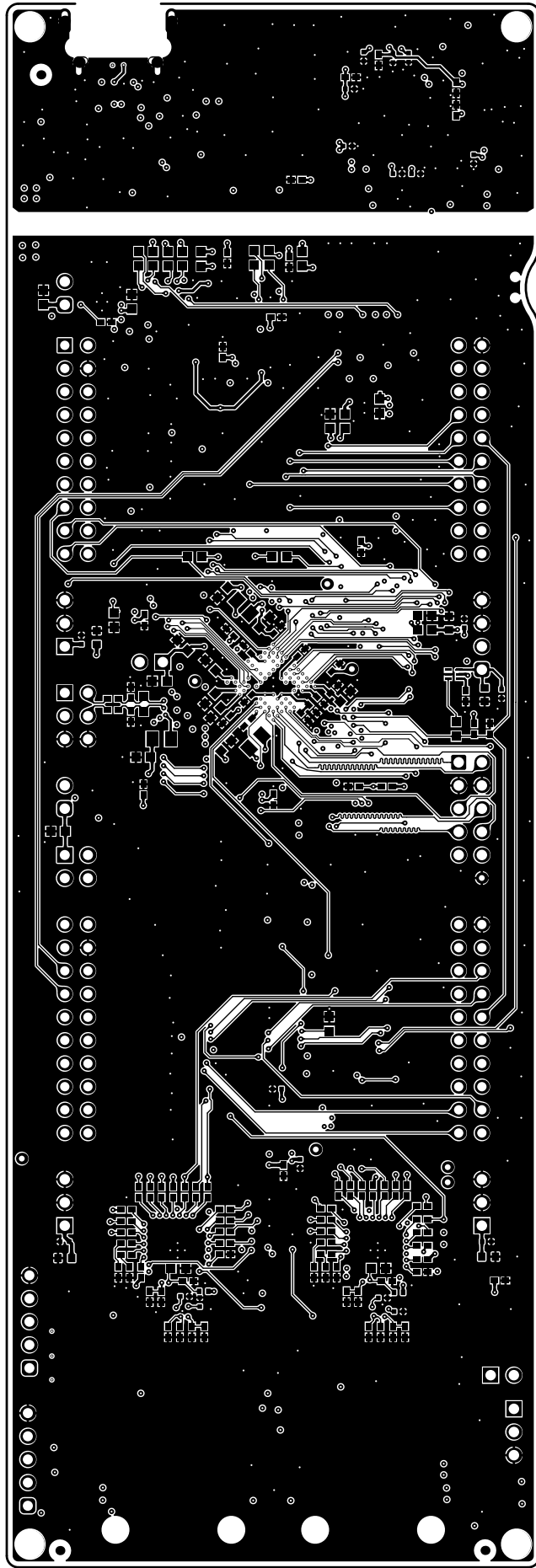
GND



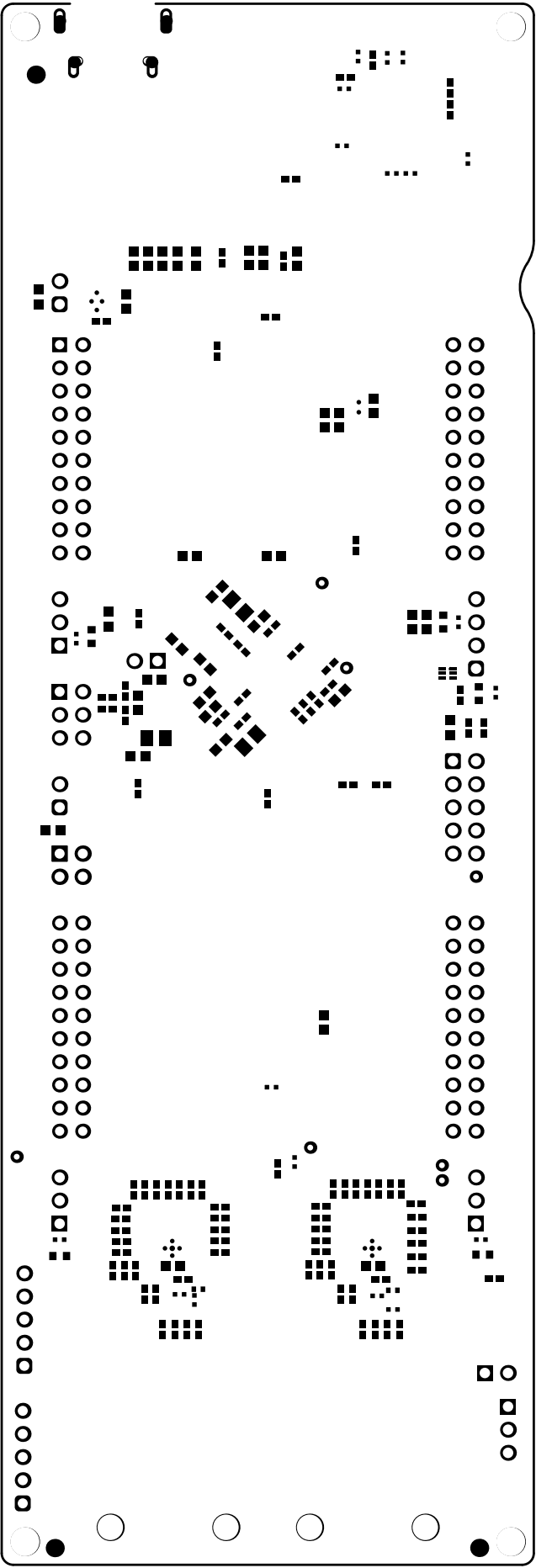
Middle Signal



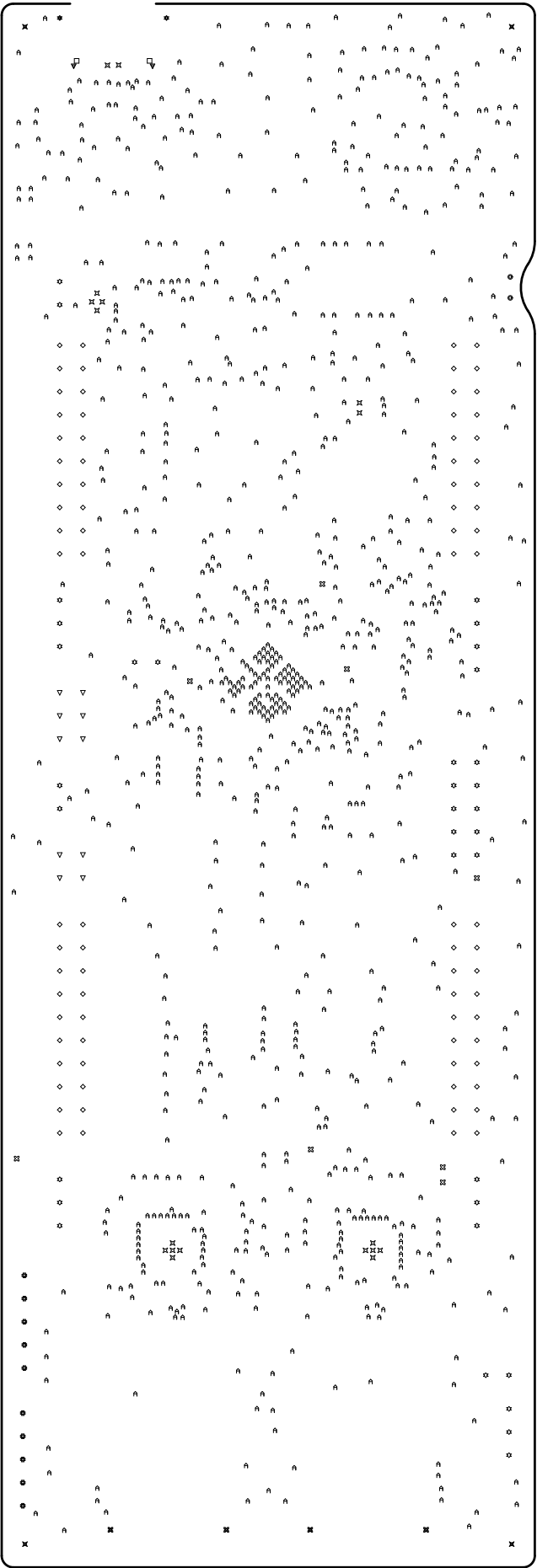




Bottom Signal



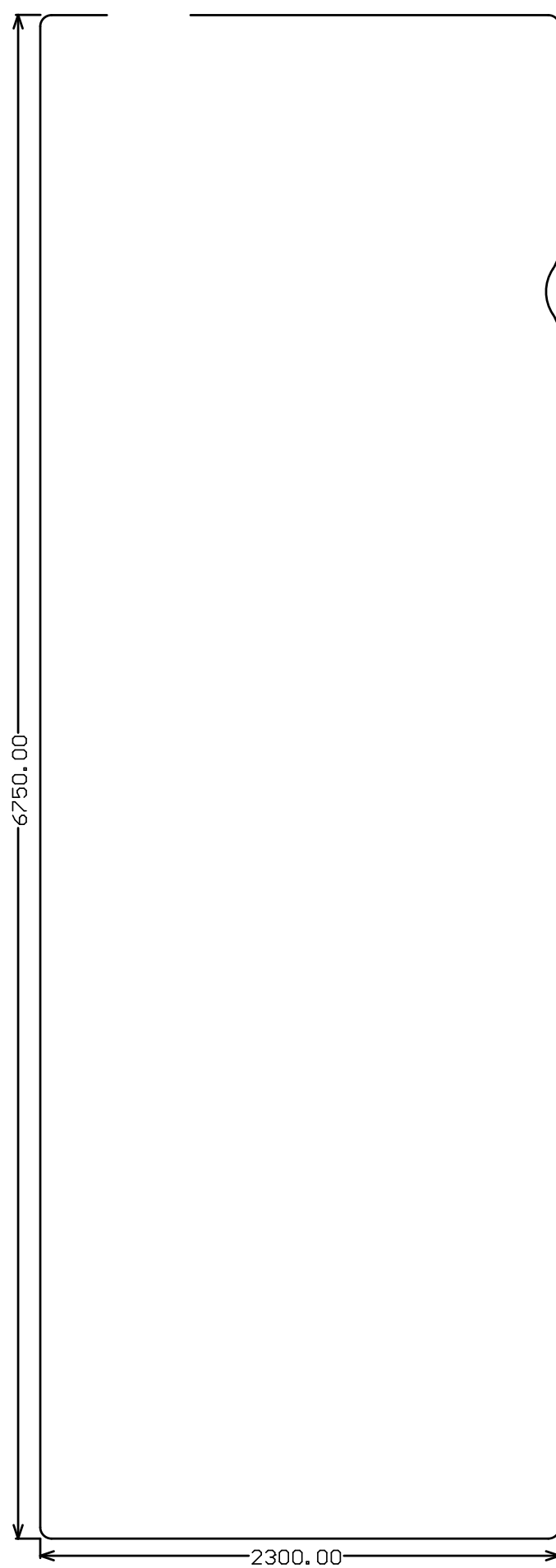
Bottom Solder



| Symbol | Count | Hole Size | Plated | Hole Type | Drill Layer Pair | Hole Tolerance |
|--------|------------|---------------------|--------|-----------|----------------------------|-------------------|
| ✕ | 18 | 7.87mil (0.200mm) | PTH | Round | Top Signal - Bottom Signal | +/-1.97mil |
| ⌢ | 903 | 8.00mil (0.203mm) | PTH | Round | Top Signal - Bottom Signal | |
| ⊗ | 8 | 25.00mil (0.635mm) | PTH | Round | Top Signal - Bottom Signal | |
| □ | 2 | 27.56mil (0.700mm) | PTH | Slot | Top Signal - Bottom Signal | |
| ◎ | 2 | 35.43mil (0.900mm) | NPTH | Round | Top Signal - Bottom Signal | |
| ◇ | 80 | 40.16mil (1.020mm) | PTH | Round | Top Signal - Bottom Signal | |
| ▽ | 10 | 43.31mil (1.100mm) | PTH | Round | Top Signal - Bottom Signal | |
| ⊕ | 10 | 43.31mil (1.100mm) | PTH | Round | Top Signal - Bottom Signal | |
| ☆ | 34 | 45.28mil (1.150mm) | PTH | Round | Top Signal - Bottom Signal | |
| ✧ | 2 | 59.06mil (1.500mm) | PTH | Slot | Top Signal - Bottom Signal | |
| ▽ | 2 | 74.80mil (1.900mm) | PTH | Slot | Top Signal - Bottom Signal | |
| ⊗ | 4 | 110.24mil (2.800mm) | NPTH | Round | Top Signal - Bottom Signal | +1.97mil/-1.18mil |
| ✕ | 4 | 125.00mil (3.175mm) | NPTH | Round | Top Signal - Bottom Signal | |
| | 1079 Total | | | | | |

Slot definitions : Routed Path Length = Calculated from tool start centre position to tool end centre position.
Hole Length = Routed Path Length + Tool Size = Slot length as defined in the PCB layout

Drill Drawing



M2 Board Dimensions