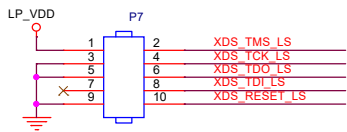


# XDS110 Debugger Interface

## ARM Cortex Debug Connector

Functions: JTAG

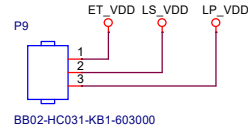


Use case:

- A: Use split LP connector, power target from ET VDD
- B: Use split LP connector, power target externally
- C: Use 10-pin arm, power target from ET VDD
- D: Use 10-pin arm, power target externally

## Level Shifter Voltage Selector

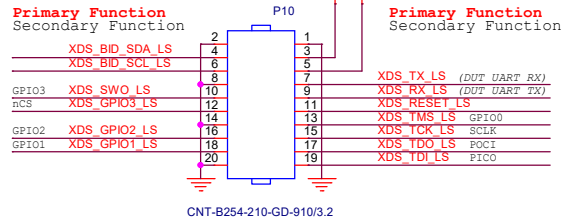
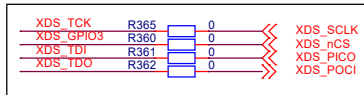
1-2: Supply from XDS110 (3.3 V).  
2-3: Supply from target board.



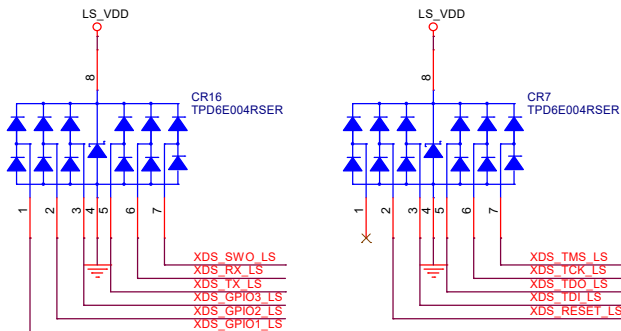
## LaunchPad Connector

Functions: JTAG, UART, GPIOs

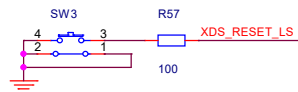
### SPI Signals



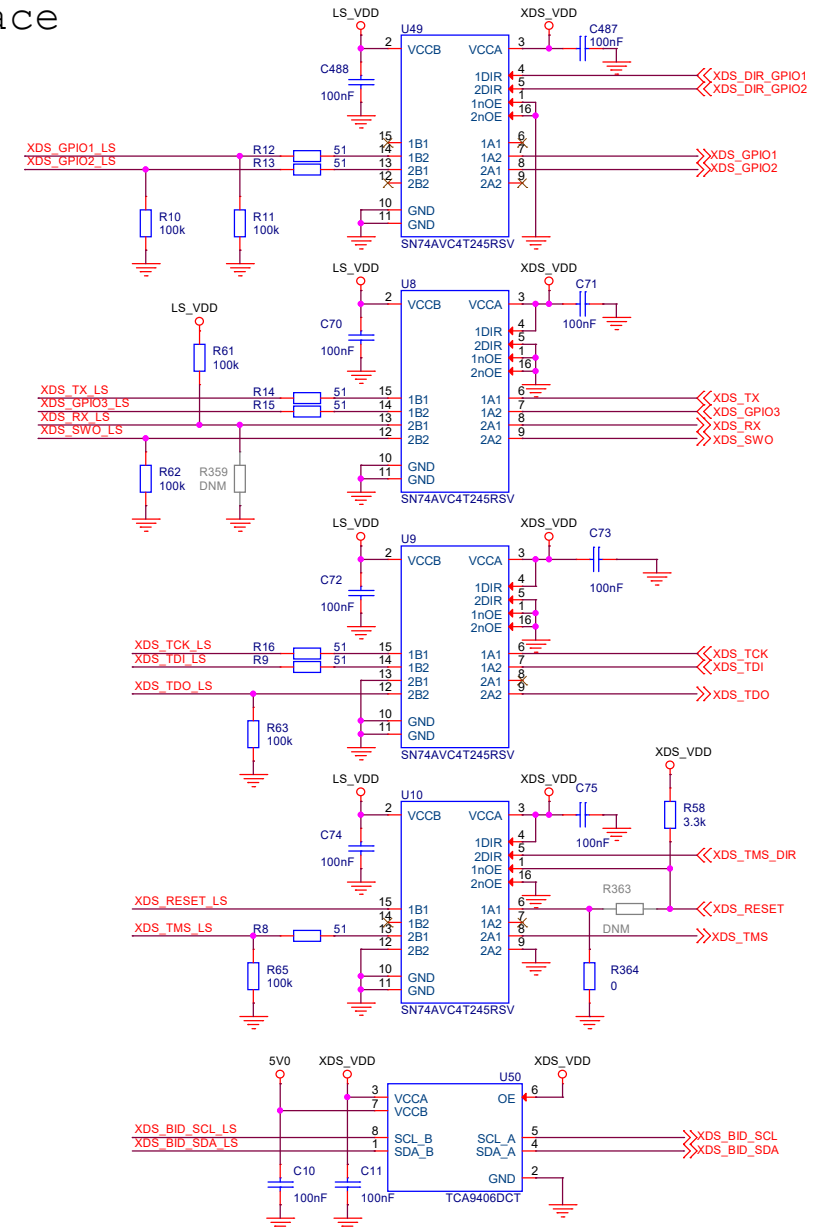
## ESD Protection



## Reset Button



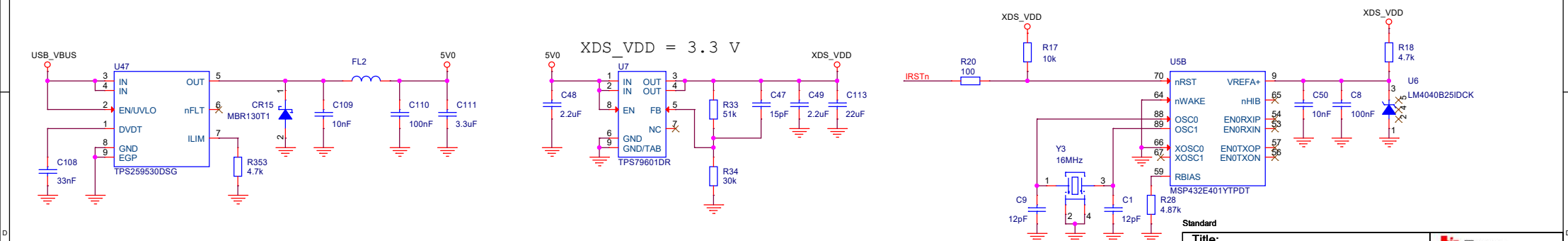
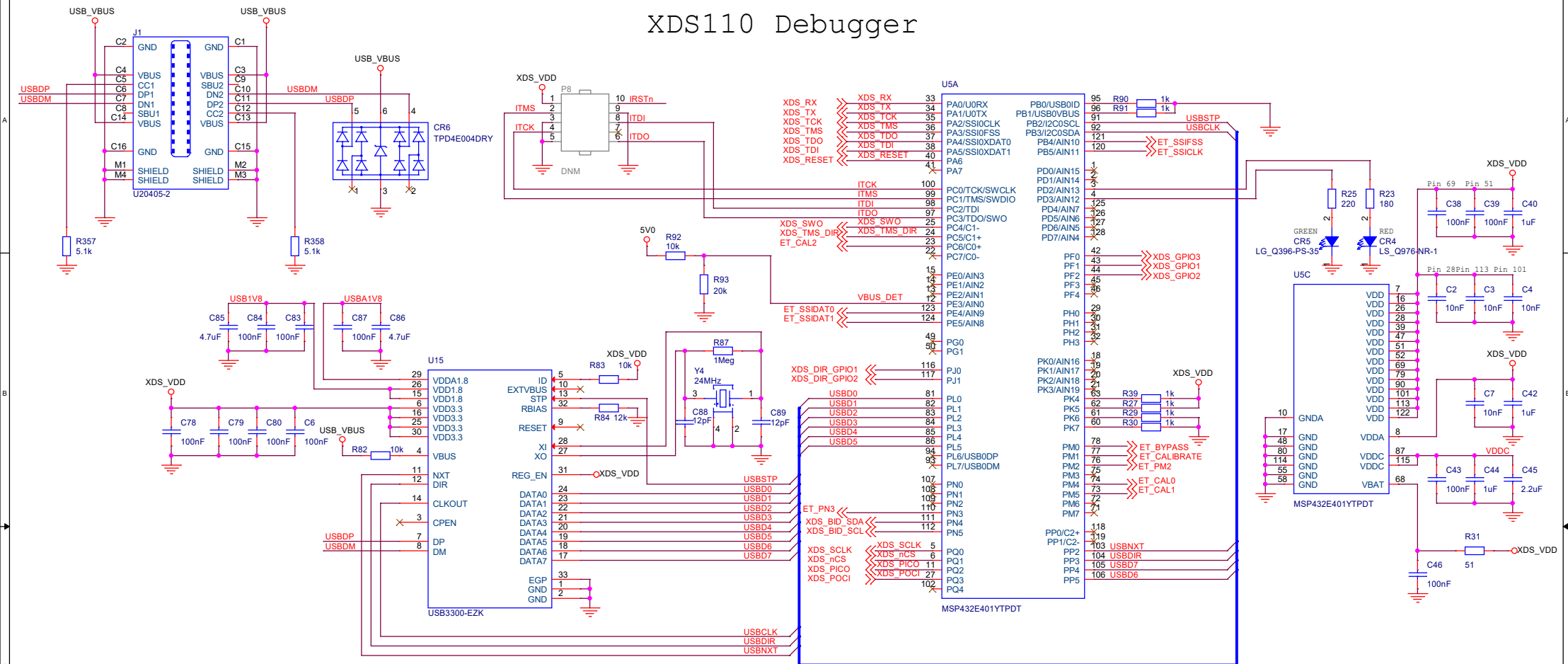
## Level Shifters




Standard

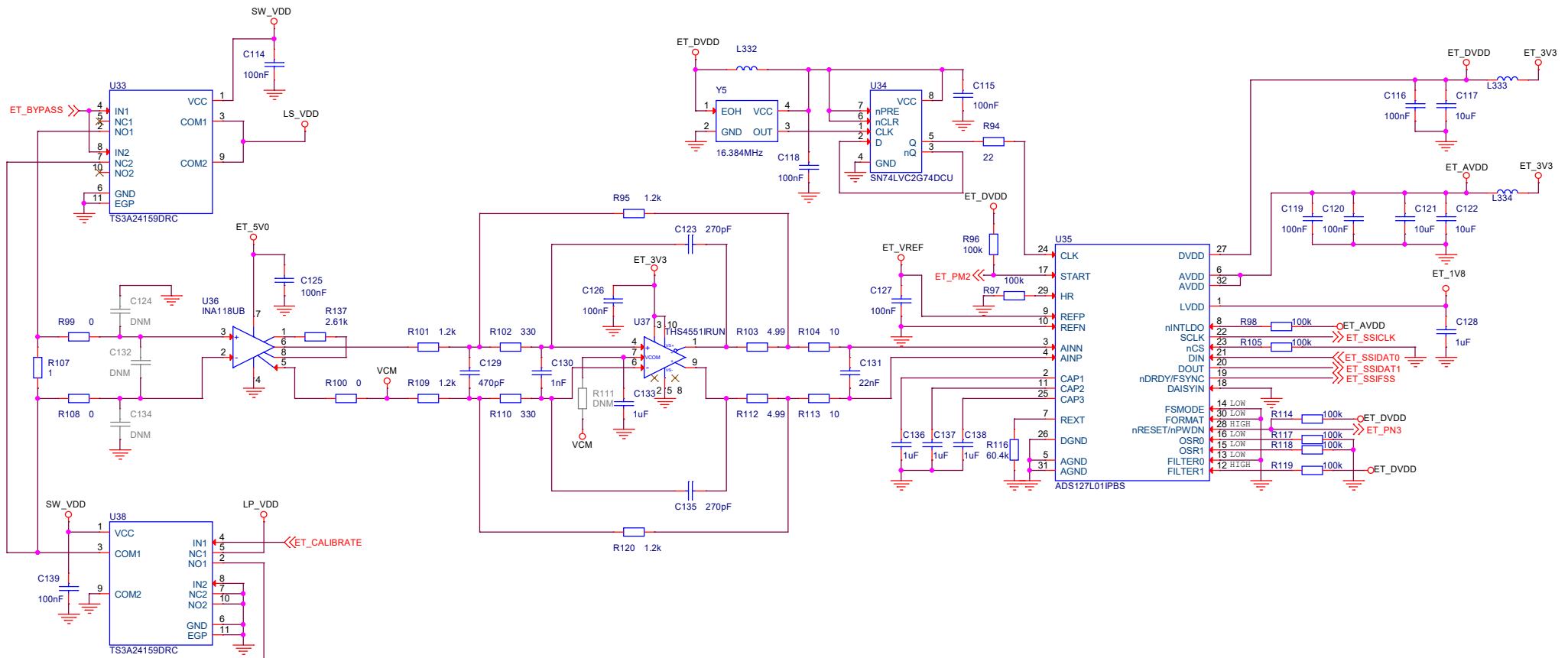
Title: LP-XDS110ET	TEXAS INSTRUMENTS
Drawn: RGW	PN: MCU101
Checked: SJO	
Size: A3	Rev: B
Date:	Sheet: 1 of 5
Wednesday, October 05, 2022	

## XDS110 Debugger

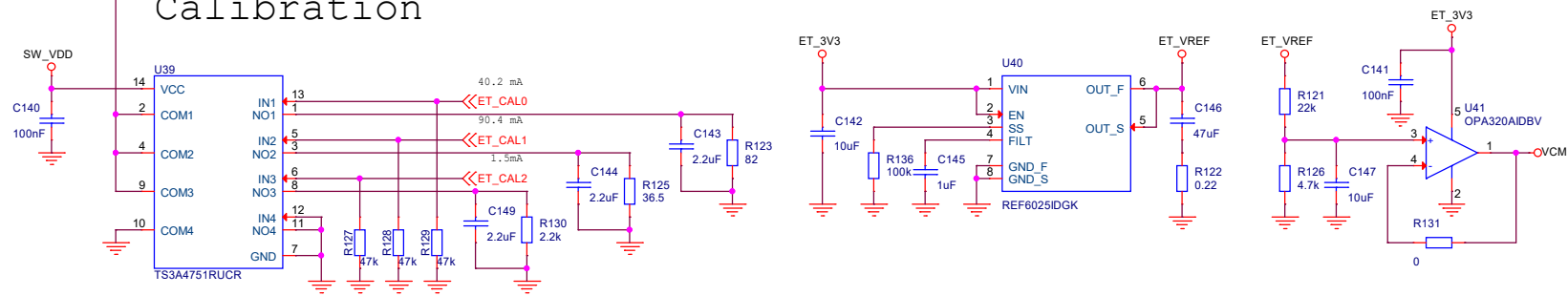


Title: <b>LP-XDS110ET</b>		 <b>TEXAS INSTRUMENTS</b>	
Drawn: <b>RGW</b>		PN: <b>MCU101</b>	
Checked: <b>SJO</b>			
Size: <b>A3</b>		Rev: <b>B</b> Sheet: <b>2 of 5</b>	
Date:		<b>Wednesday, October 05, 2022</b>	


## EnergyTrace



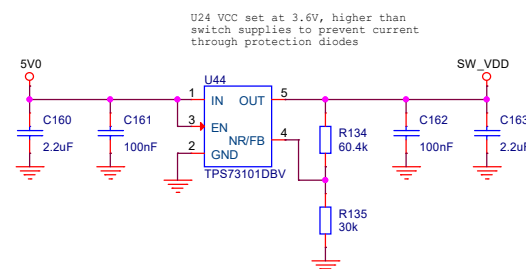
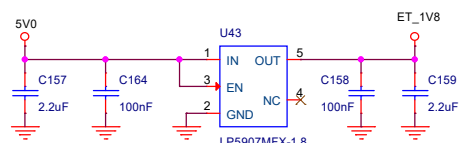
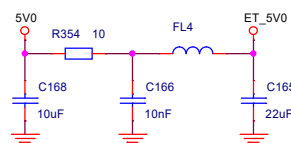
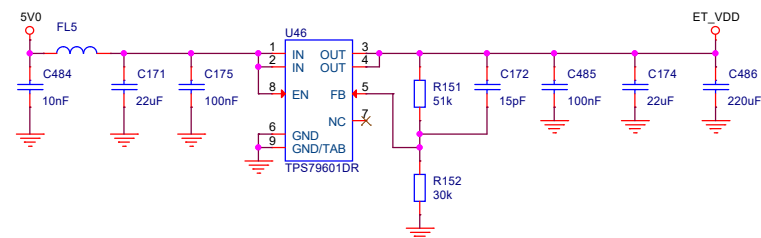
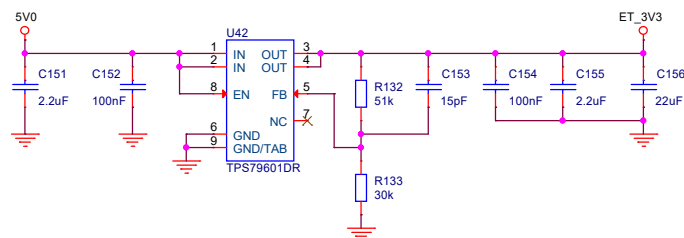
## Calibration



### Standard

Title: <b>LP-XDS110ET</b>		 <b>TEXAS INSTRUMENTS</b>	
Drawn: <b>RGW</b>		PN: <b>MCU101</b>	
Checked: <b>SJO</b>			
Size: <b>A3</b>	Rev: <b>B</b>	Sheet: <b>3 of 5</b>	
Date: <b>Wednesday, October 05, 2022</b>			

# EnergyTrace Power Supply



Standard

Title: LP-XDS110ET	TEXAS INSTRUMENTS
Drawn: RGW	PN: MCU101
Checked: SJO	
Size: A3	Rev: B
Date:	Sheet: 4 of 5
Wednesday, October 05, 2022	

Mechanical

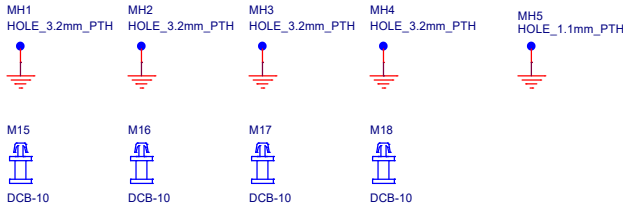
Jumpers

P9:  Mount on Pin 1-2

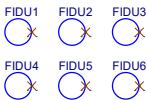
PCB



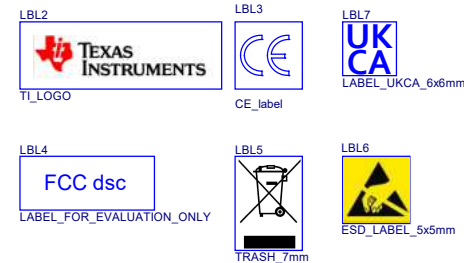
Mounting Holes



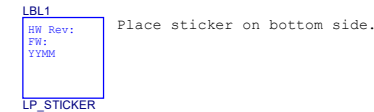
Fiducials




Labels



Stickers



Standard	
Title: LP-XDS110ET	
Drawn: RGW	PN: MCU101
Checked: SJO	
Size: A3	Rev: B Sheet: 5 of 5
Date:	Wednesday, October 05, 2022