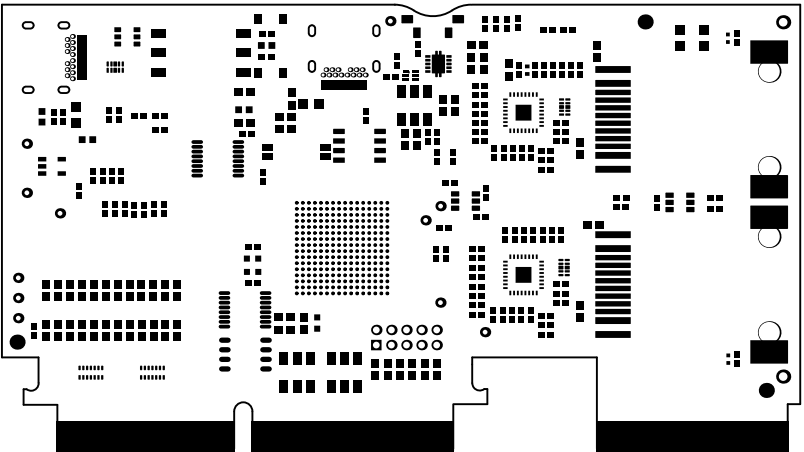
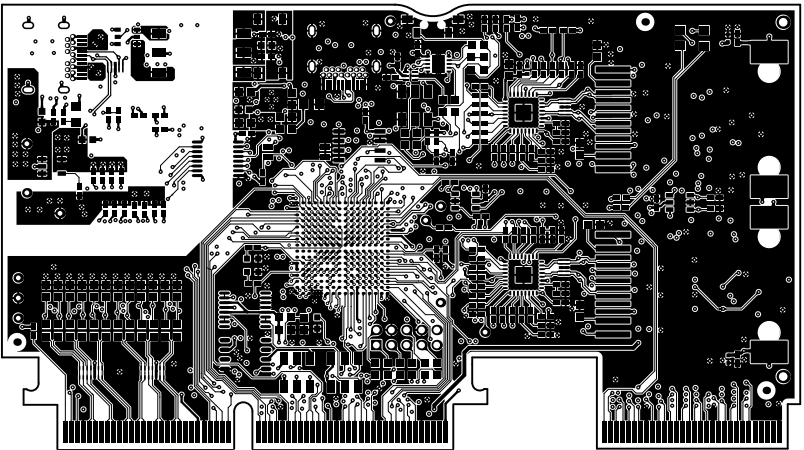


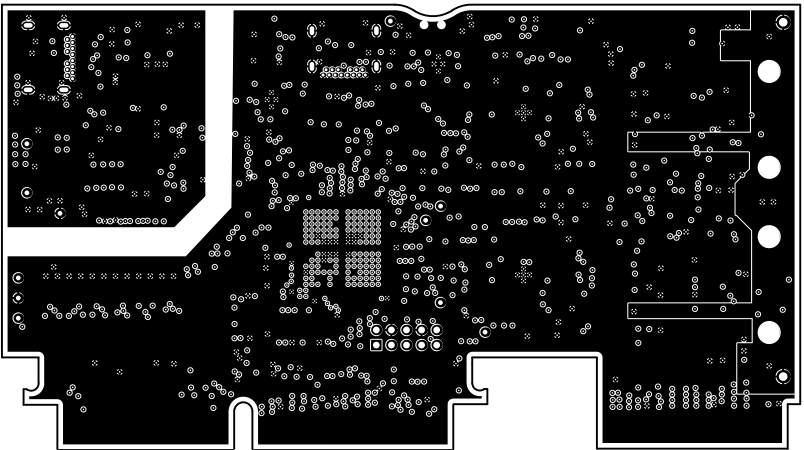
ALL ARTWORK VIEWED FROM TOP SIDE	BOARD #: MCU114	REV: A	SUN REV:
LAYER NAME = Top Overlay	TID #: N/A		
PLOT NAME = Top Overlay	GENERATED : 6/13/2023 6:50:40 PM	TEXAS INSTRUMENTS	



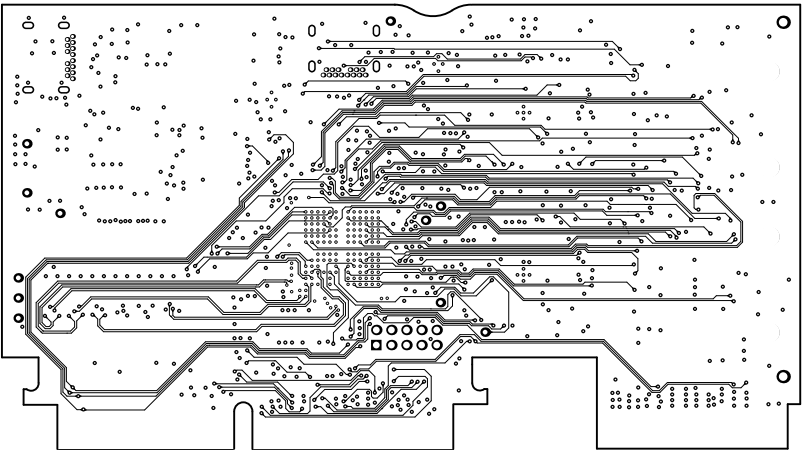
ALL ARTWORK VIEWED FROM TOP SIDE	BOARD #: MCU114	REV: A	SUN REV:
LAYER NAME = Top Solder	TID #: N/A		
PLOT NAME = Top Solder Mask	GENERATED : 6/13/2023 6:50:41 PM		TEXAS INSTRUMENTS



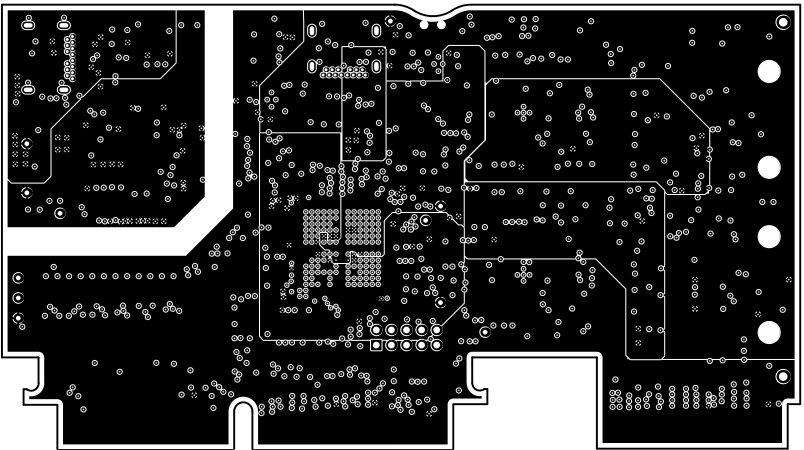
ALL ARTWORK VIEWED FROM TOP SIDE	BOARD #: MCU114	REV: A	SUN REV:
LAYER NAME = Top Layer	TID #: N/A		
PLOT NAME = Top Layer	GENERATED : 6/13/2023 6:50:41 PM	TEXAS INSTRUMENTS	



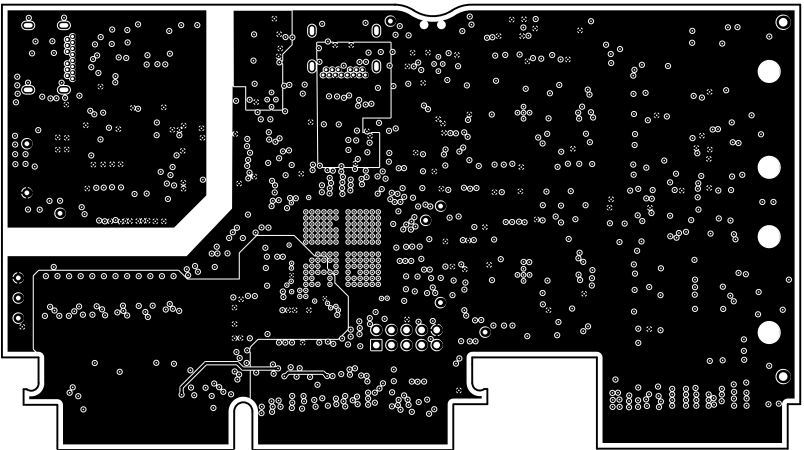
ALL ARTWORK VIEWED FROM TOP SIDE	BOARD #: MCU114	REV: A	SUN REV:
LAYER NAME = GND 2	TID #: N/A		
PLOT NAME = GND 2	GENERATED : 6/13/2023 6:50:41 PM		TEXAS INSTRUMENTS



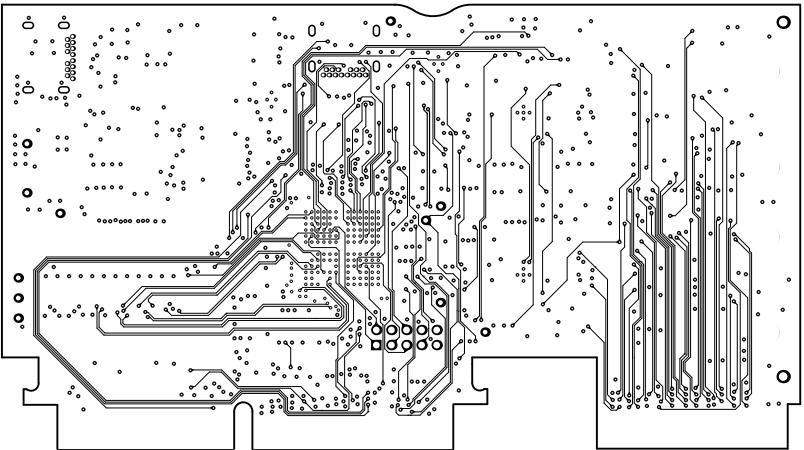
ALL ARTWORK VIEWED FROM TOP SIDE	BOARD #: MCU114	REV: A	SUN REV:
LAYER NAME = Signal Layer 3	TID #: N/A		
PLOT NAME = Signal Layer 3	GENERATED : 6/13/2023 6:50:41 PM		TEXAS INSTRUMENTS



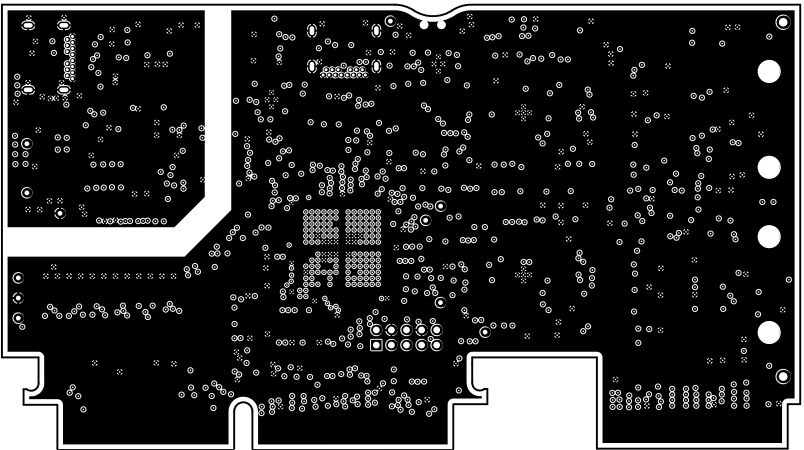
ALL ARTWORK VIEWED FROM TOP SIDE	BOARD #: MCU114	REV: A	SUN REV:
LAYER NAME = Power 4	TID #: N/A		
PLOT NAME = Power 4	GENERATED : 6/13/2023 6:50:41 PM		TEXAS INSTRUMENTS



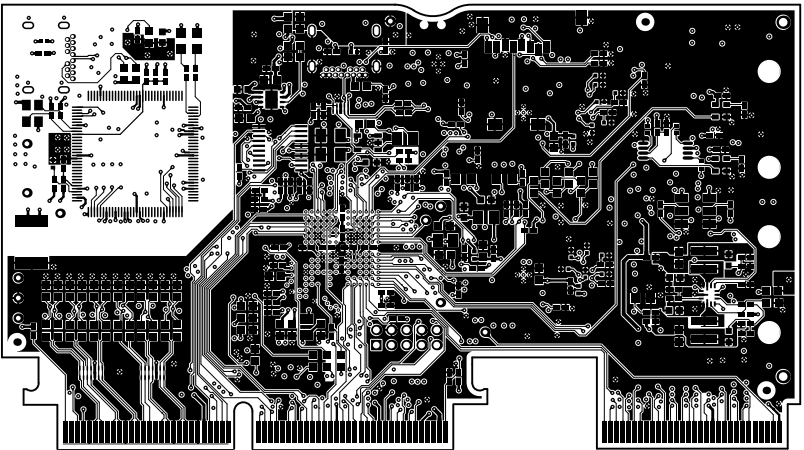
ALL ARTWORK VIEWED FROM TOP SIDE	BOARD #: MCU114	REV: A	SUN REV:
LAYER NAME = Power 5	TID #: N/A		
PLOT NAME = Power 5	GENERATED : 6/13/2023 6:50:41 PM	TEXAS INSTRUMENTS	



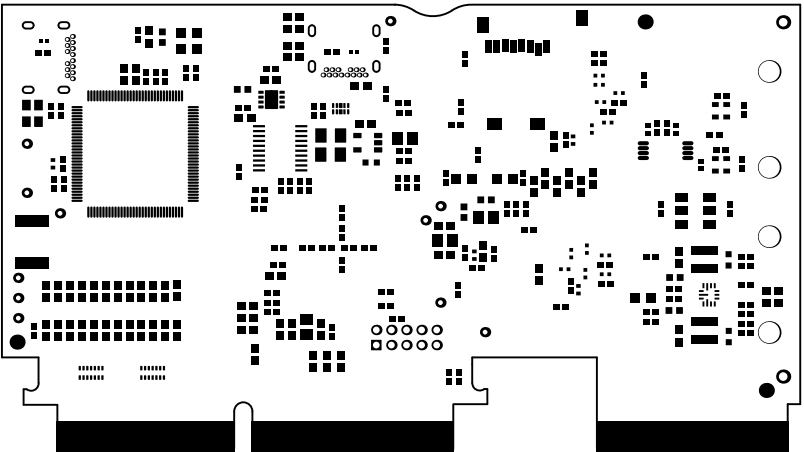
ALL ARTWORK VIEWED FROM TOP SIDE	BOARD #: MCU114	REV: A	SUN REV:
LAYER NAME = Signal Layer 6	TID #: N/A		
PLOT NAME = Signal Layer 6	GENERATED : 6/13/2023 6:50:41 PM		TEXAS INSTRUMENTS



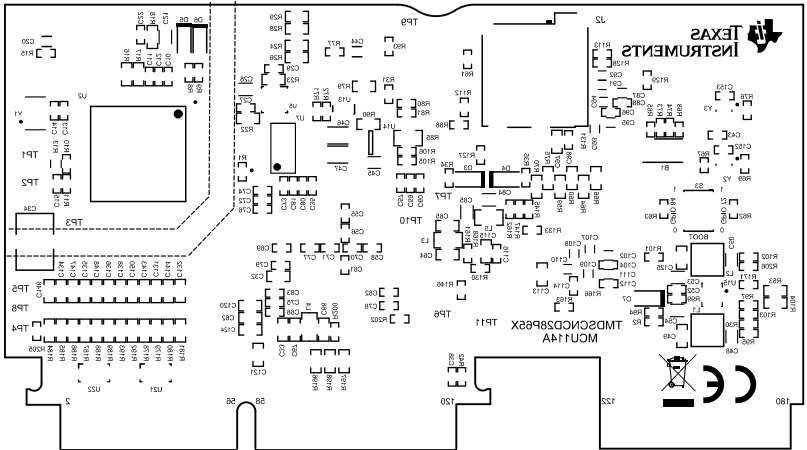
ALL ARTWORK VIEWED FROM TOP SIDE	BOARD #: MCU114	REV: A	SUN REV:
LAYER NAME = GND 7	TID #: N/A		
PLOT NAME = GND 7	GENERATED : 6/13/2023 6:50:41 PM		TEXAS INSTRUMENTS



ALL ARTWORK VIEWED FROM TOP SIDE	BOARD #: MCU114	REV: A	SUN REV:
LAYER NAME = Bottom	TID #: N/A		
PLOT NAME = Bottom Layer	GENERATED : 6/13/2023 6:50:42 PM		TEXAS INSTRUMENTS



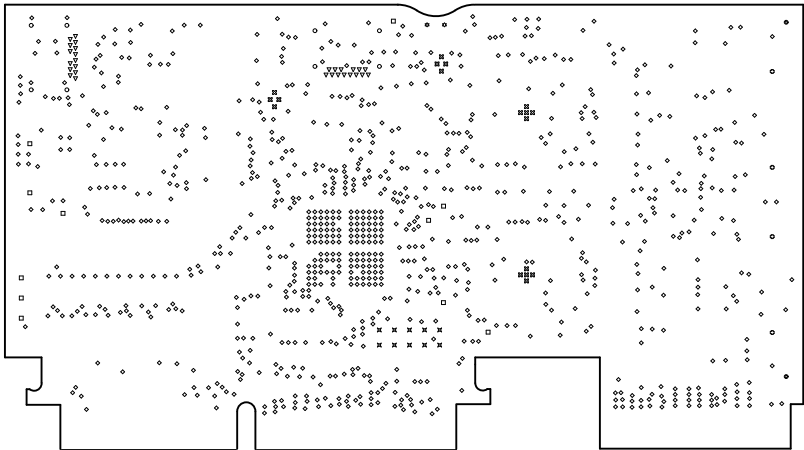
ALL ARTWORK VIEWED FROM TOP SIDE	BOARD #: MCU114	REV: A	SUN REV:
LAYER NAME = Bottom Solder	TID #: N/A		
PLOT NAME = Bottom Solder Mask	GENERATED : 6/13/2023 6:50:42 PM		TEXAS INSTRUMENTS



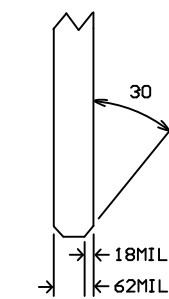
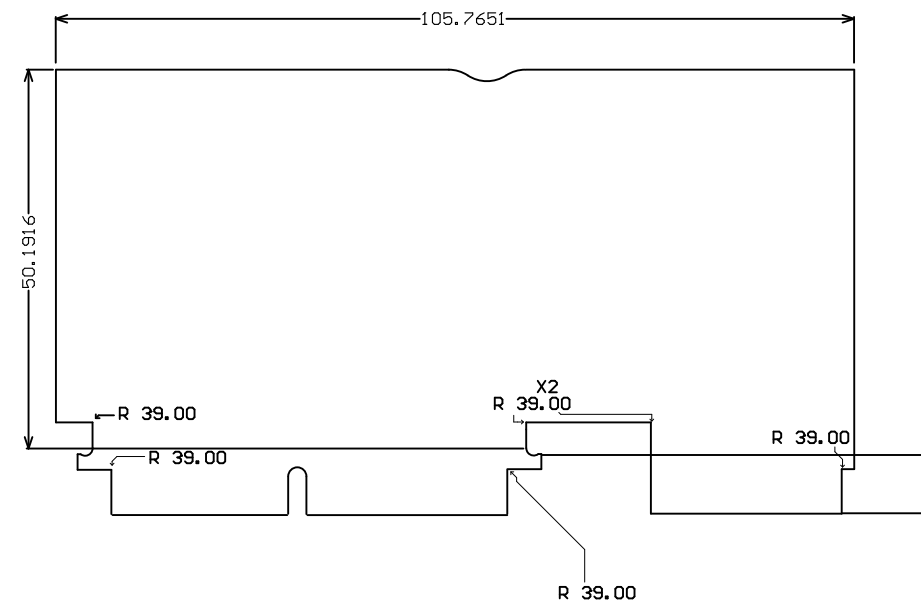
ALL ARTWORK VIEWED FROM TOP SIDE	BOARD #: MCU114	REV: A	SUN REV:
LAYER NAME = Bottom Overlay	TID #: N/A		
PLOT NAME = Bottom Overlay	GENERATED : 6/13/2023 6:50:42 PM	TEXAS INSTRUMENTS	

Symbol	Count	Hole Size	Plated	Hole Type	Drill Layer Pair	Hole Tolerance
⌘	18	7.87mil (0.200mm)	PTH	Round	Top Layer - Bottom	
◇	963	8.00mil (0.203mm)	PTH	Round	Top Layer - Bottom	
▽	28	15.75mil (0.400mm)	PTH	Round	Top Layer - Bottom	
○	8	23.62mil (0.600mm)	PTH	Slot	Top Layer - Bottom	
□	11	25.00mil (0.635mm)	PTH	Round	Top Layer - Bottom	
⌘	10	35.04mil (0.890mm)	PTH	Round	Top Layer - Bottom	
☆	2	35.43mil (0.900mm)	NPTH	Round	Top Layer - Bottom	
⊙	2	45.00mil (1.143mm)	PTH	Round	Top Layer - Bottom	+1.97mil/-1.18mil
⊙	4	110.24mil (2.800mm)	NPTH	Round	Top Layer - Bottom	
	1046 Total					

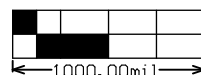
Slot definitions : Routed Path Length = Calculated from tool start centre position to tool end centre position.
Hole Length = Routed Path Length + Tool Size = Slot length as defined in the PCB layout



ALL ARTWORK VIEWED FROM TOP SIDE	BOARD #: MCU114	REV: A	SUN REV:
LAYER NAME = Drill Drawing	TID #: N/A		
PLOT NAME = Drill Drawing	GENERATED : 6/13/2023 6:50:42 PM	TEXAS INSTRUMENTS	



GOLD FINGER
SIDE VIEW



ALL ARTWORK VIEWED FROM TOP SIDE	BOARD #: MCU114	REV: A	SUN REV:
LAYER NAME = M2 Board Dimensions	TID #: N/A		
PLOT NAME = Board Dimensions	GENERATED : 6/13/2023 6:50:43 PM	TEXAS INSTRUMENTS	