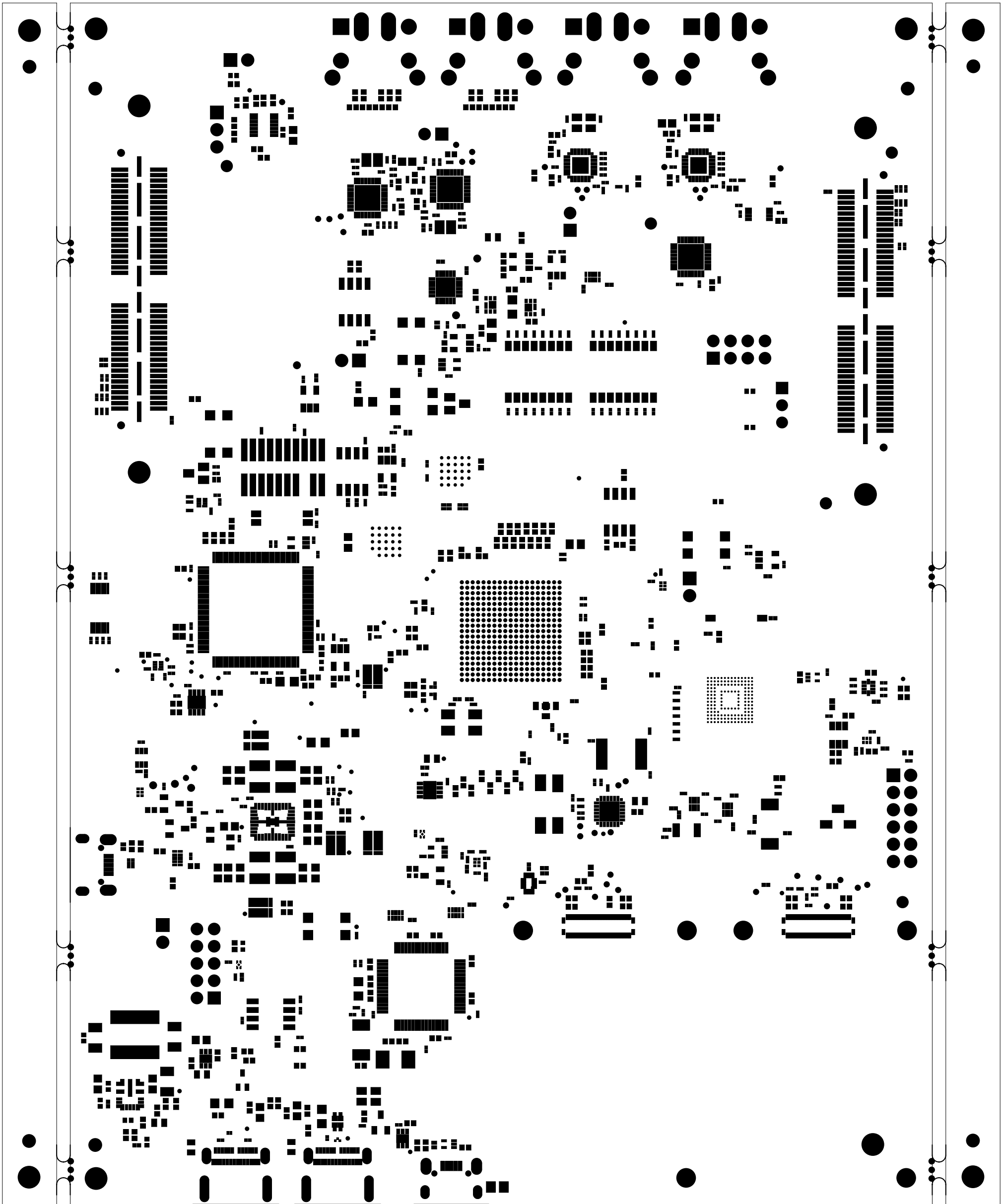


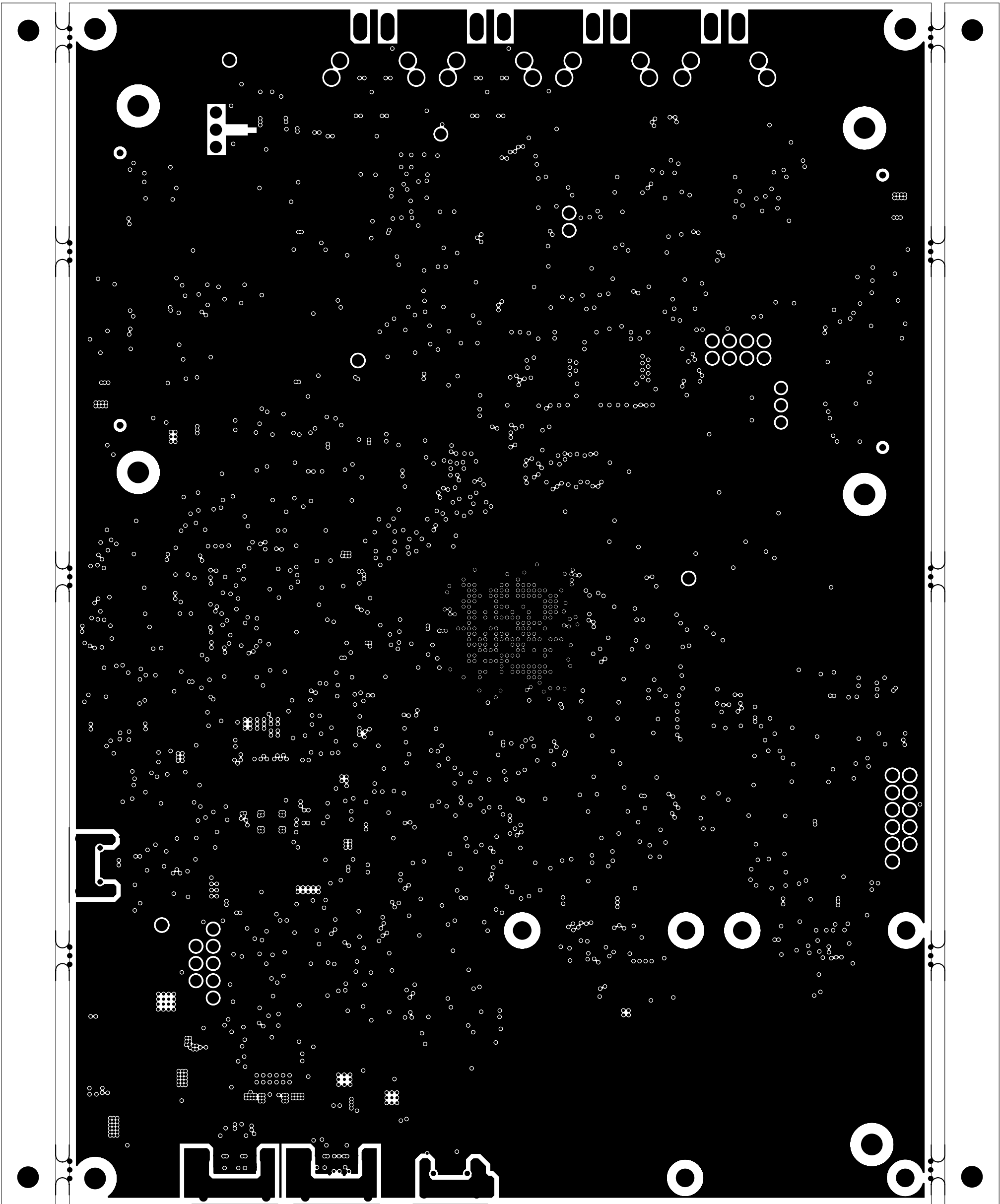
		TEXAS INSTRUMENTS		PROC190A	
BOARD NAME: AM275 EVM		REV: A		DESCRIPTION: PRIMARY-SILKSCREEN	
SCALE: 1		DATE: 28/02/25		SHEET 02 OF 13	




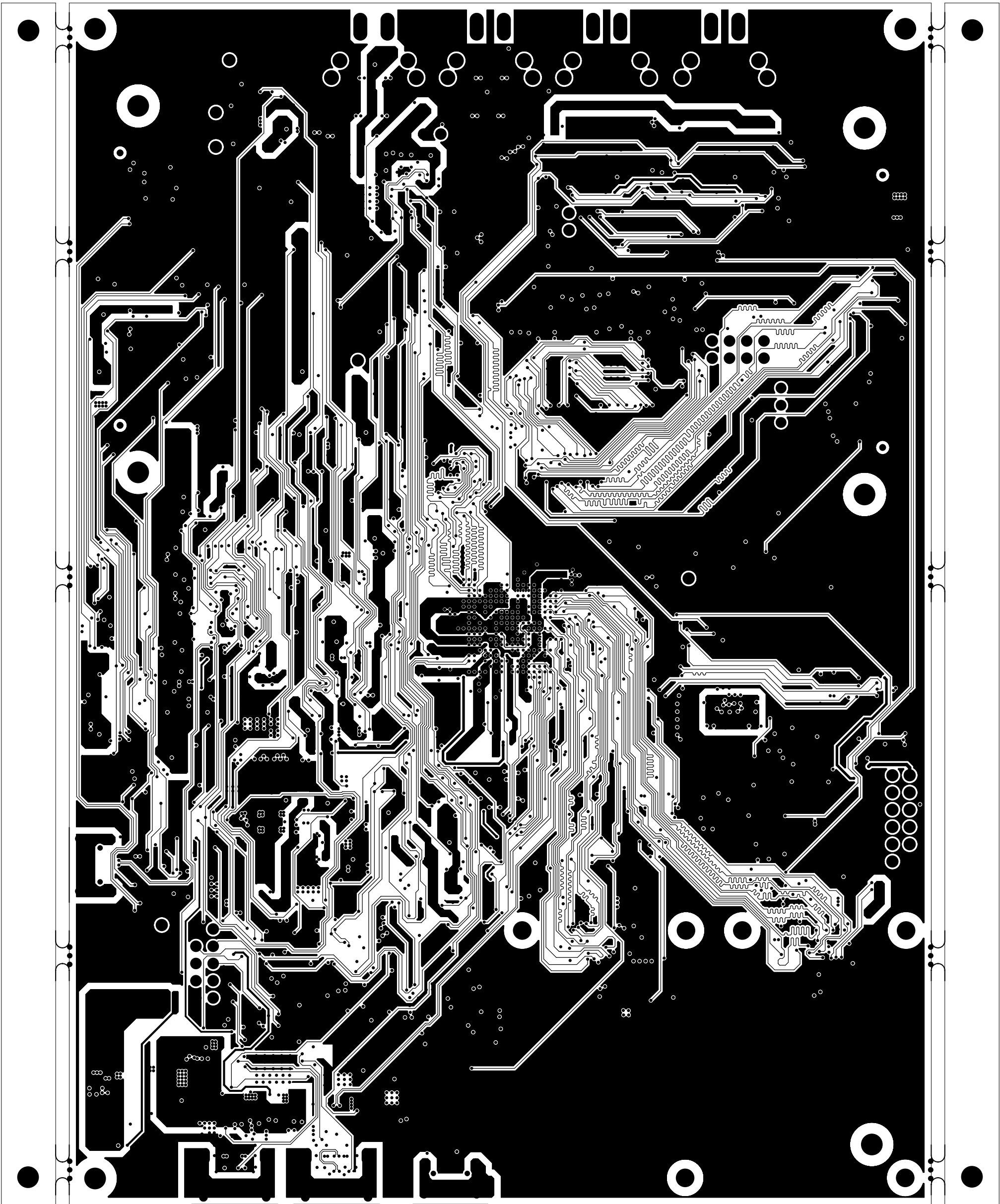
 TEXAS INSTRUMENTS		TEXAS INSTRUMENTS		PROC190A
BOARD NAME: AM275 EVM		REV: A	DESCRIPTION: PRIMARY-SOLDERMASK	
SCALE: 1		DATE: 28/02/25	SHEET 03 OF 13	




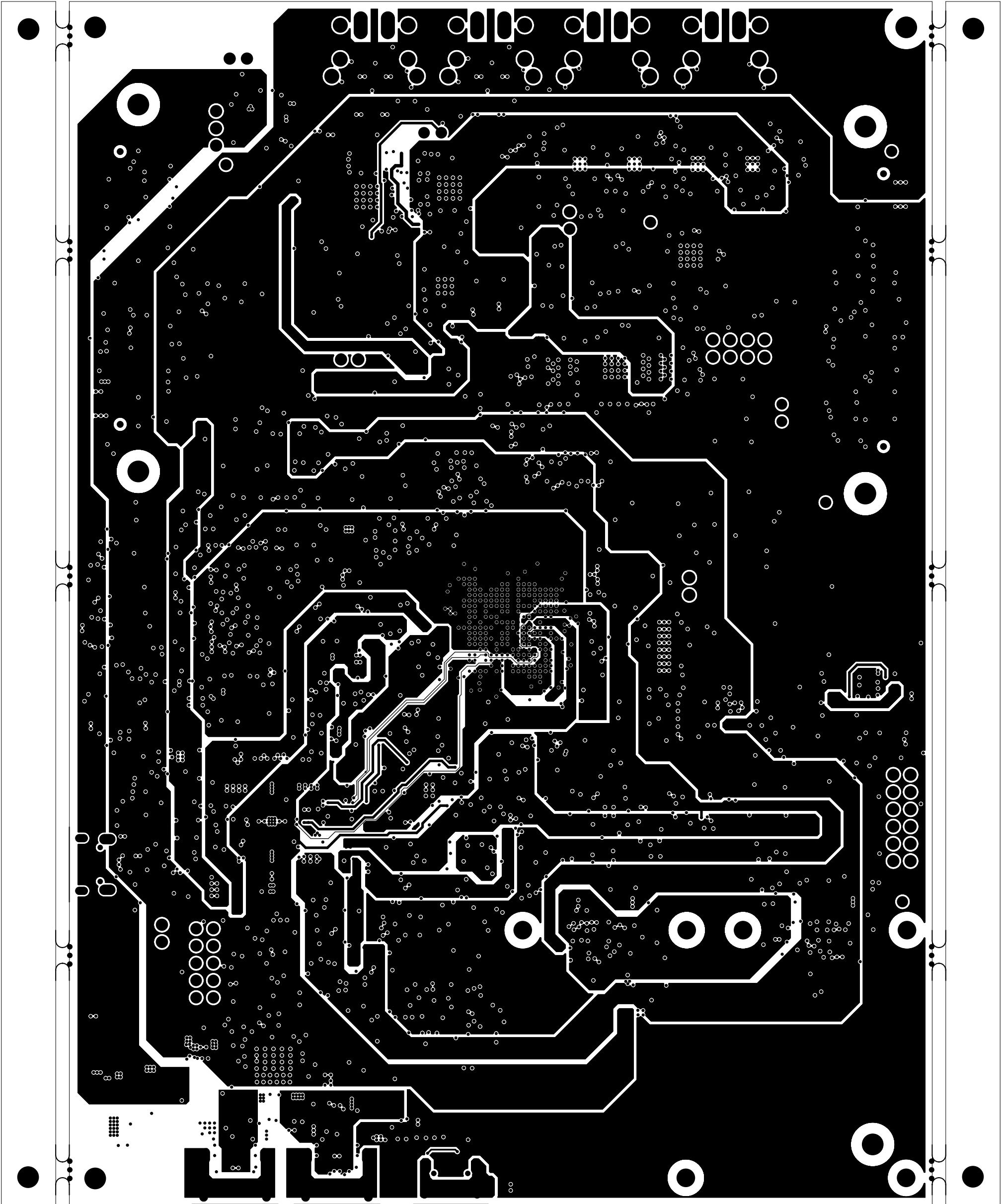
		TEXAS INSTRUMENTS		PROC190A
BOARD NAME: AM275 EVM		REV: A	DESCRIPTION: PRIMARY-SIDE-SIG	
SCALE: 1		DATE: 28/02/25	SHEET 04 OF 13	




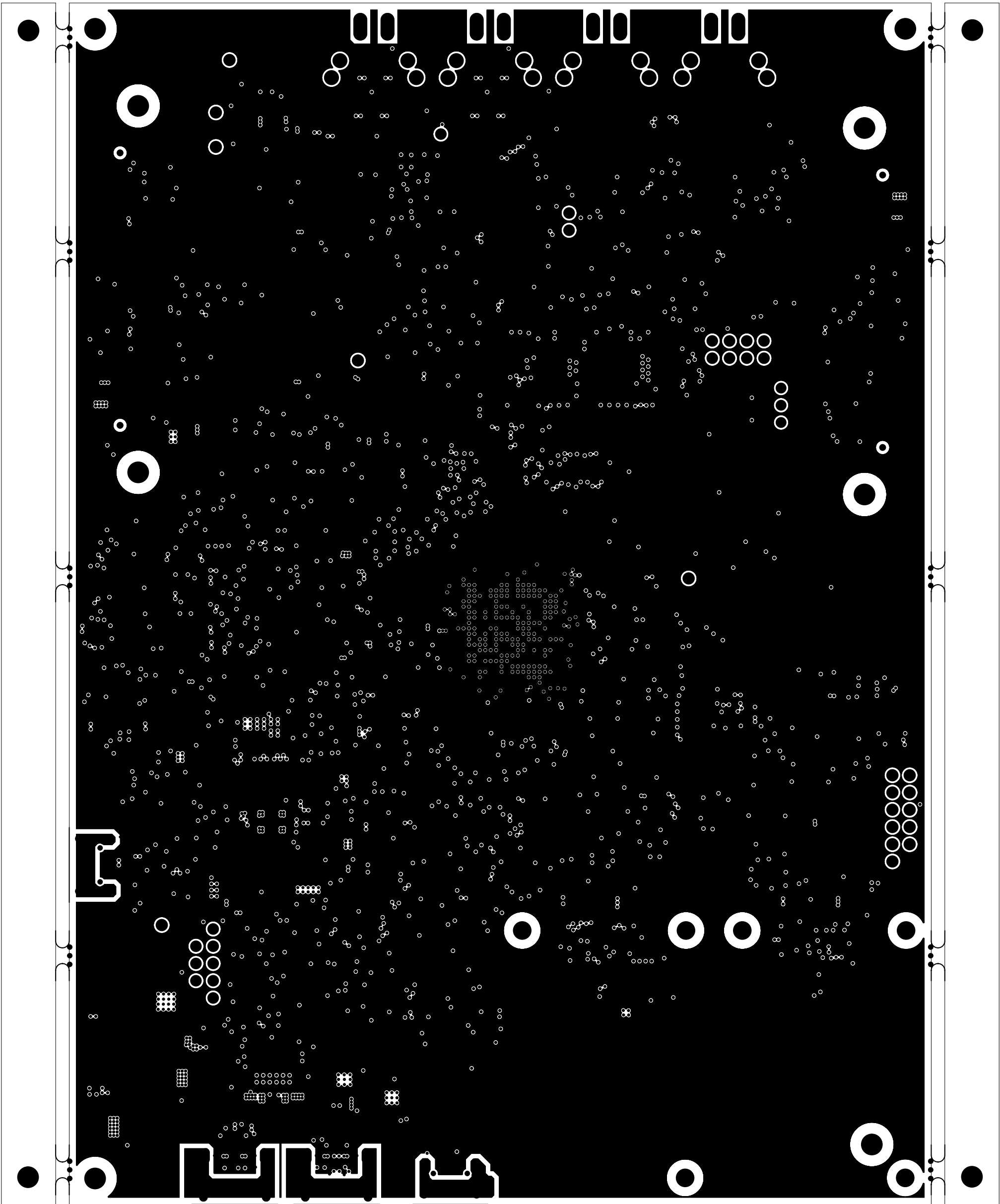
 TEXAS INSTRUMENTS		TEXAS INSTRUMENTS		PROC190A
BOARD NAME: AM275 EVM		REV: A	DESCRIPTION: GROUND-PLANE-01	
SCALE: 1		DATE: 28/02/25	SHEET 05 OF 13	




		TEXAS INSTRUMENTS		PROC190A
BOARD NAME: AM275 EVM		REV: A	DESCRIPTION: INNER-SIGNAL-01	
SCALE: 1		DATE: 28/02/25	SHEET 06 OF 13	




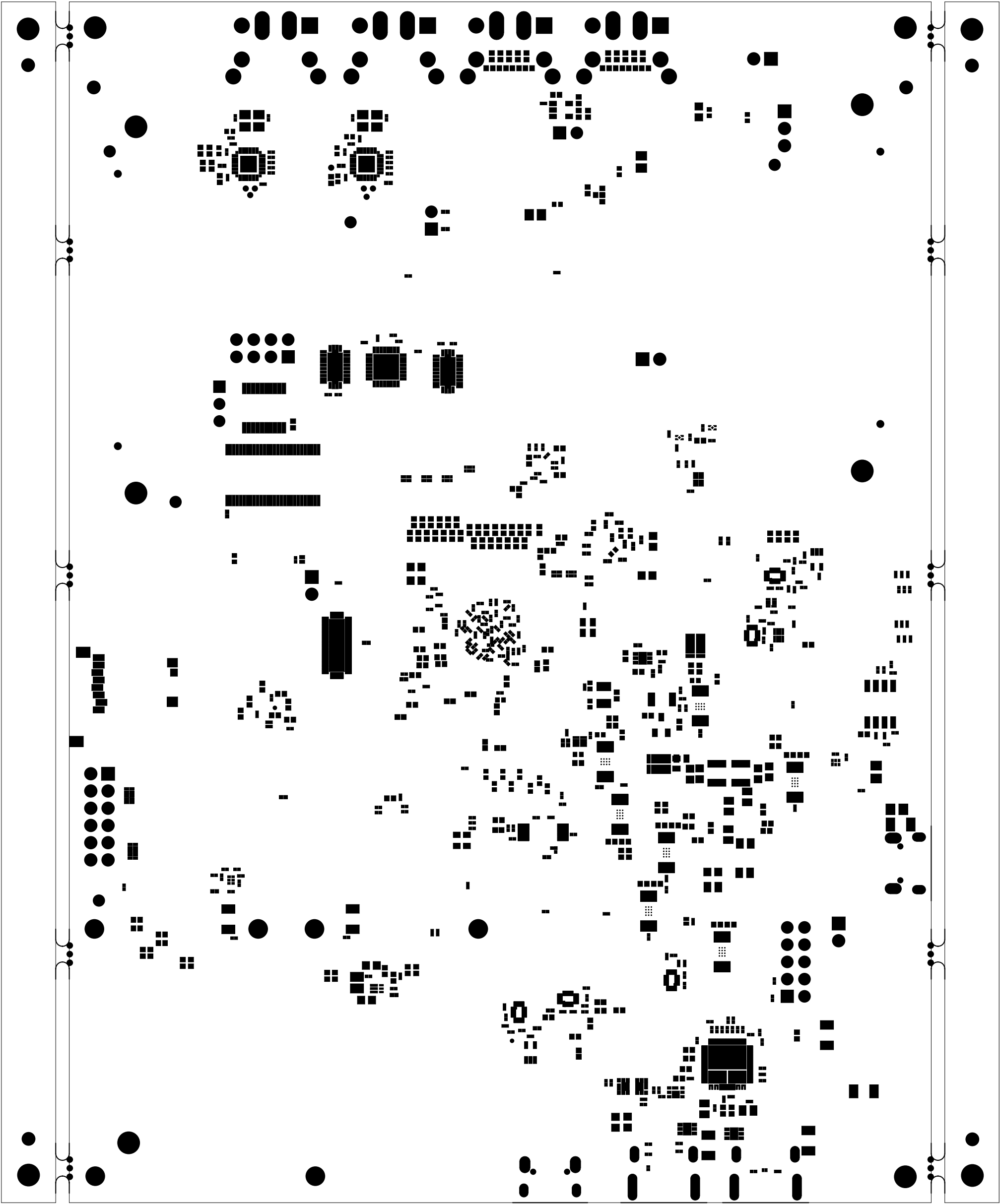
		TEXAS INSTRUMENTS		PROC190A
BOARD NAME: AM275 EVM	REV: A	DESCRIPTION: POWER-PLANE-01		
SCALE: 1	DATE: 28/02/25	SHEET 07 OF 13		




 TEXAS INSTRUMENTS		TEXAS INSTRUMENTS		PROC190A
BOARD NAME: AM275 EVM	REV: A	DESCRIPTION: GROUND-PLANE-02		
SCALE: 1	DATE: 28/02/25	SHEET 08 OF 13		



		TEXAS INSTRUMENTS		PROC190A
BOARD NAME: AM275 EVM		REV: A	DESCRIPTION: SECONDARY-SIDE-SIG	
SCALE: 1		DATE: 28/02/25	SHEET 09 OF 13	



 TEXAS INSTRUMENTS		TEXAS INSTRUMENTS		PROC190A
BOARD NAME: AM275 EVM		REV: A	DESCRIPTION: SECONDARY-SOLDERMASK	
SCALE: 1		DATE: 28/02/25	SHEET 10 OF 13	

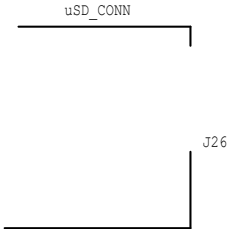
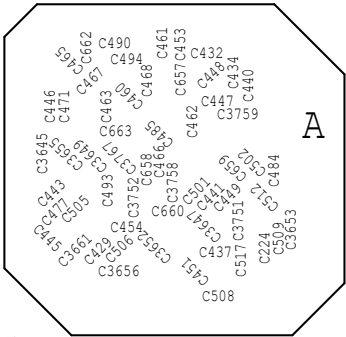
FOR EVALUATION ONLY;
NOT FCC APPROVED FOR RESALE



C3703

C122

ASSY#



U2349

U2350

R616

R618

R628

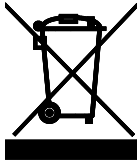
R630

R622

R625

R629

R626



R606

R601

R602

R605

R607

U120

C611

R624

C610

R623

L11

C614

R632

R634

R639

R637

R5777

R641

R642

C620

U127

C612

R633

R635

R636

R637

R638

R639

R640

R641

R642

R643

R644

R645

R646

R647

R648

R649

R650

R651

R652

R653

R654

R655

R656

R657

R658

R659

R660

R661

R662

R663

R664

R665

R666

R667

R668

R669

R670

R671

R672

R673

R674

R675

R676

R677

R678

R679

R680

R681

R682

R683

R684

R685

R686

R687

R688

R689

R690

R691

R692

R693

R694

R695

R696

R697

R698

R699

R700

R701

R702

R703

R704

R705

R706

R707

R708

R709

R710

R711

R712

R713

R714

R715

R716

R717

R718

R719

R720

R721

R722

R723

R724

R725

R726

R727

R728

R729

R730

R731

R732

R733

R734

R735

R736

R737

R738

R739

R740

R741

R742

R743

R744

R745

R746

R747

R748

R749

R750

R751

R752

R753

R754

R755

R756

R757

R758

R759

R760

R761

R762

R763

R764

R765

R766

R767

R768

R769

R770

R771

R772

R773

R774

R775

R776

R777

R778

R779

R780

R781

R782

R783

R784

R785

R786

R787

R788

R789

R790

R791

R792

R793

R794

R795

R796

R797

R798

R799

R800

R801

R802

R803

R804

R805

R806

R807

R808

R809

R810

R811

R812

R813

R814

R815

R816

R817

R818

R819

R820

R821

R822

R823

R824

R825

R826

R827

R828

R829

R830

R831

R832

R833

R834

R835

R836

R837

R838

R839

R840

R841

R842

R843

R844

R845

R846

R847

R848

R849

R850

R851

R852

R853

R854

R855

R856

R857

R858

R859

R860

R861

R862

R863

R864

R865

R866

R867

R868

R869

R870

R871

R872

R873

R874

R875

R876

R877

R878

R879

R880

R881

R882

R883

R884

R885

R886

R887

R888

R889

R890

R891

R892

R893

R894

R895

R896

R897

R898

R899

R900

R901

R902

R903

R904

R905

R906

R907

R908

R909

R910

R911

R912

R913

R914

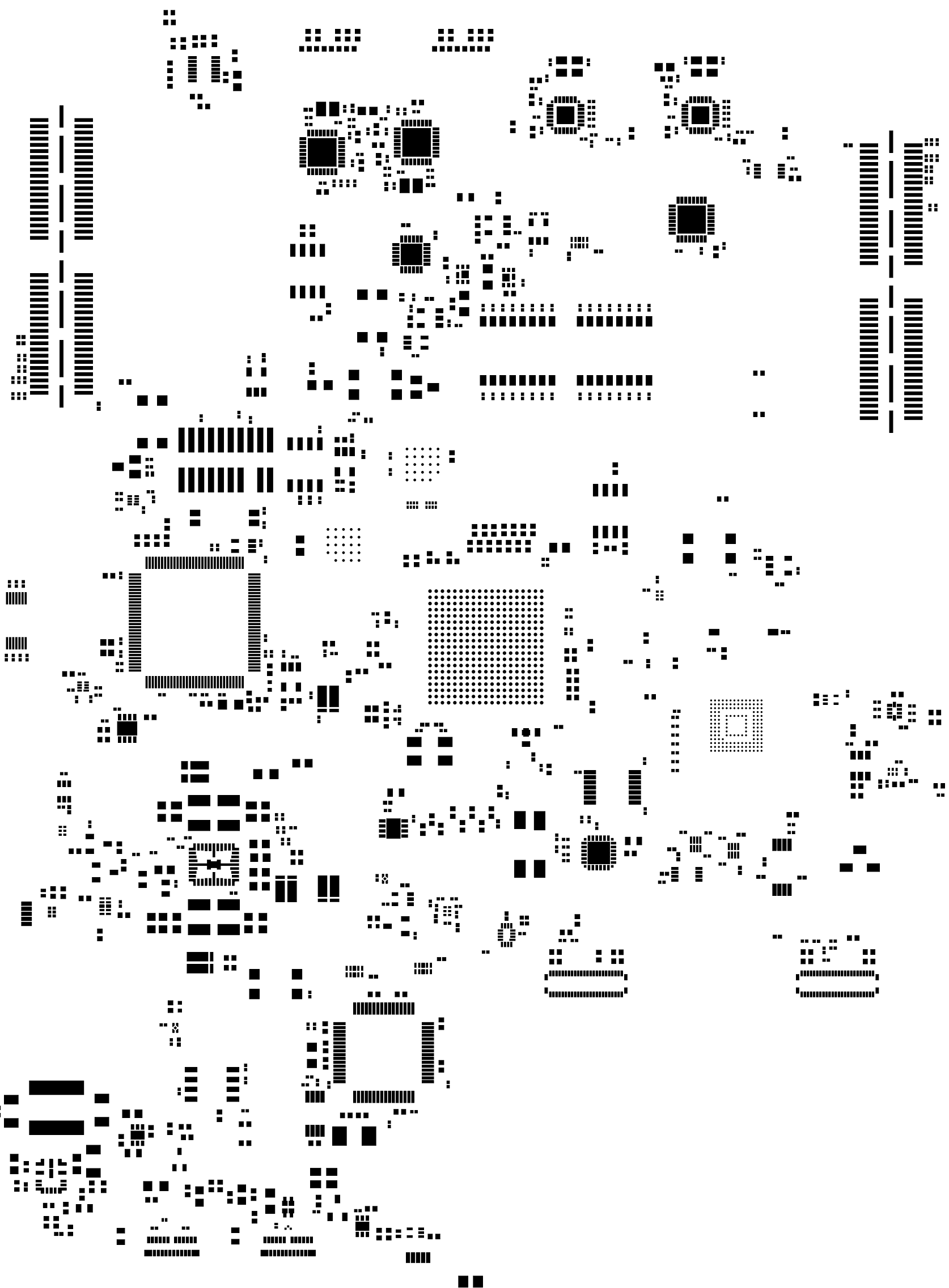
R915


R916

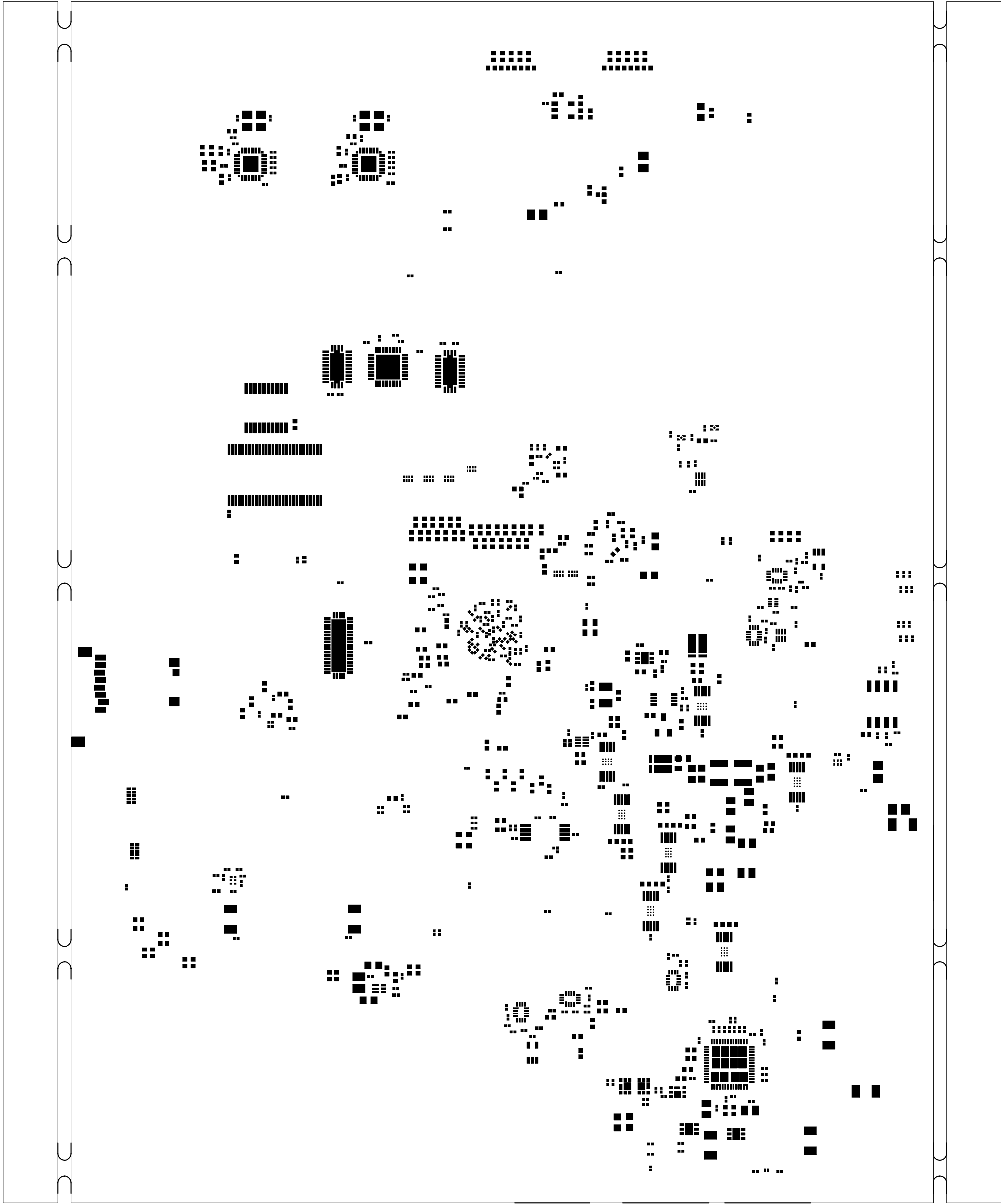
R917


R918

R919



 TEXAS INSTRUMENTS		TEXAS INSTRUMENTS		PROC190A
BOARD NAME: AM275 EVM		REV: A	DESCRIPTION: PRIMARY-PASTEMASK	
SCALE: 1		DATE: 28/02/25	SHEET 12 OF 13	



 TEXAS INSTRUMENTS		TEXAS INSTRUMENTS		PROC190A
BOARD NAME: AM275 EVM		REV: A	DESCRIPTION: SECONDARY-PASTEMASK	
SCALE: 1		DATE: 28/02/25	SHEET 13 OF 13	