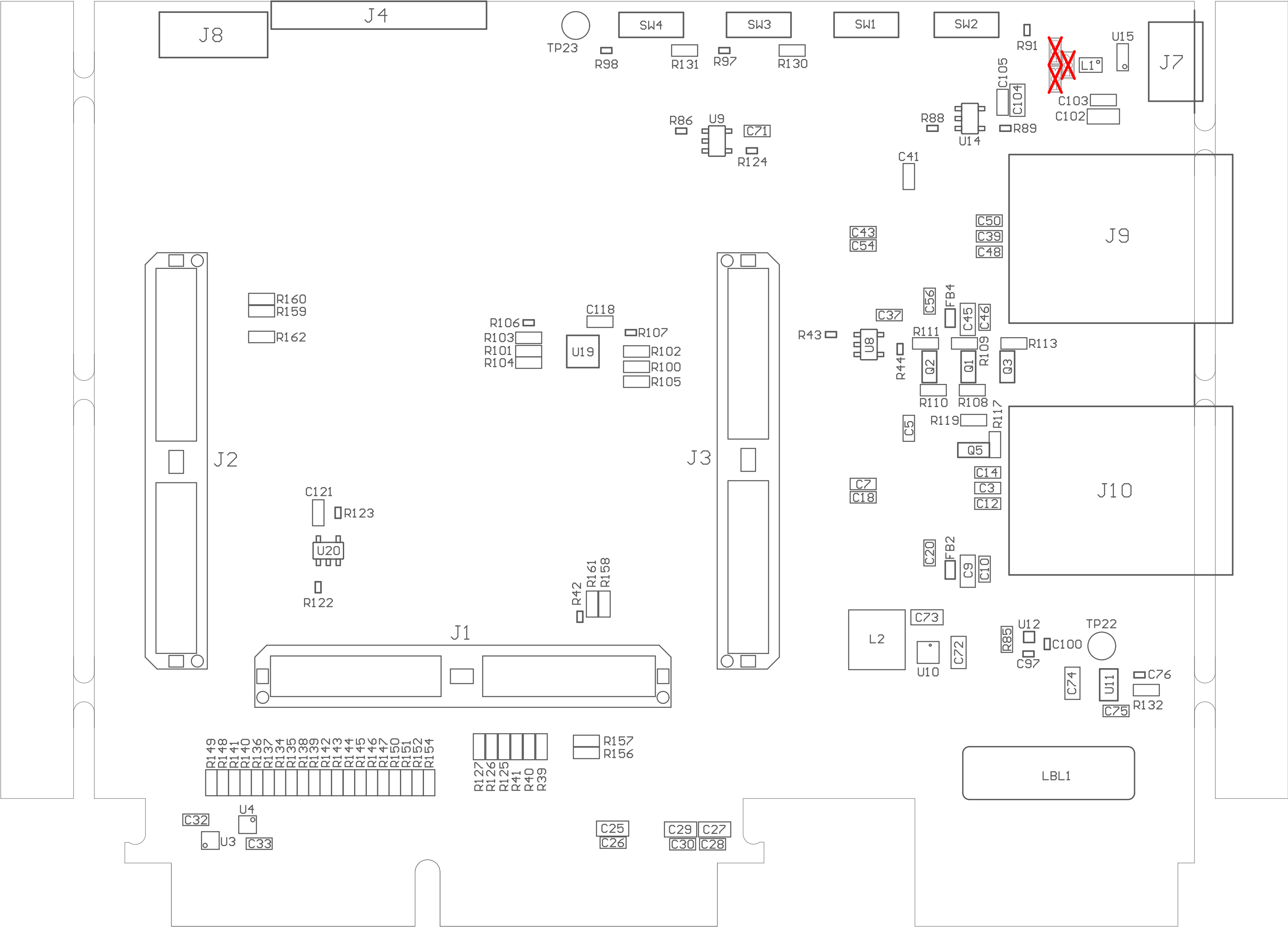


ZZ3 ■ These assemblies must be clean and free from flux and all contaminants. Use of no clean flux is not acceptable.  
ZZ1 ■ Install label in silkscreened box after final wash. Text shall be 8 pt font. Text shall be per the Label Table in the PDF schematic.  
ZZ2 ■ These assemblies are ESD sensitive, ESD precautions shall be observed.  
ZZ4 ■ These assemblies must comply with workmanship standards IPC-A-610 Class 2, unless otherwise specified.



ASSEMBLY VARIANT: 001

PCB VIEWED FROM TOP SIDE	BOARD #: PROC200	REV: E1	SUN REV: 465
TID #:			
GENERATED PLOT NAME = TOP Assembly Drawing	01/10/2024 12:45:43		TEXAS INSTRUMENTS