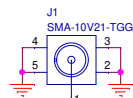
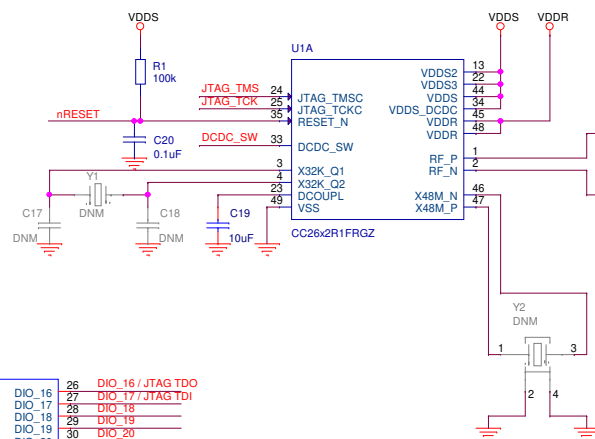
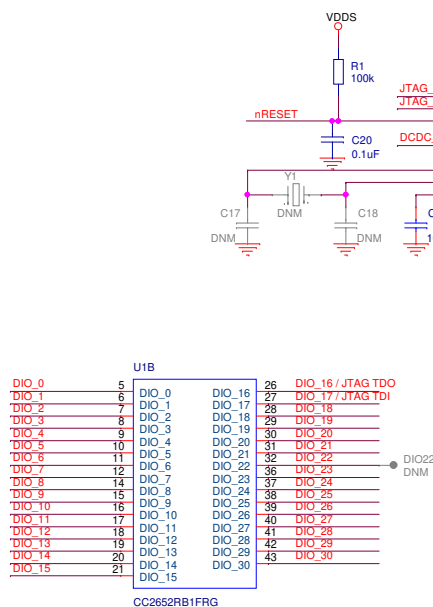


Place L1 and C8 close to pin 33

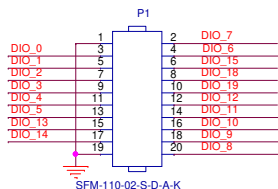


Mount either C24 or C14 To select SMA or PCB ant.

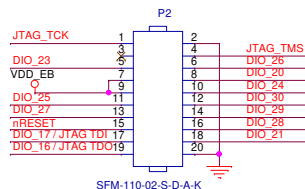
R12 and C15 for antenna matching

Note that a DC-blocking capacitor must be used if antenna has DC-path to ground.

EM connector 1




EM connector 2

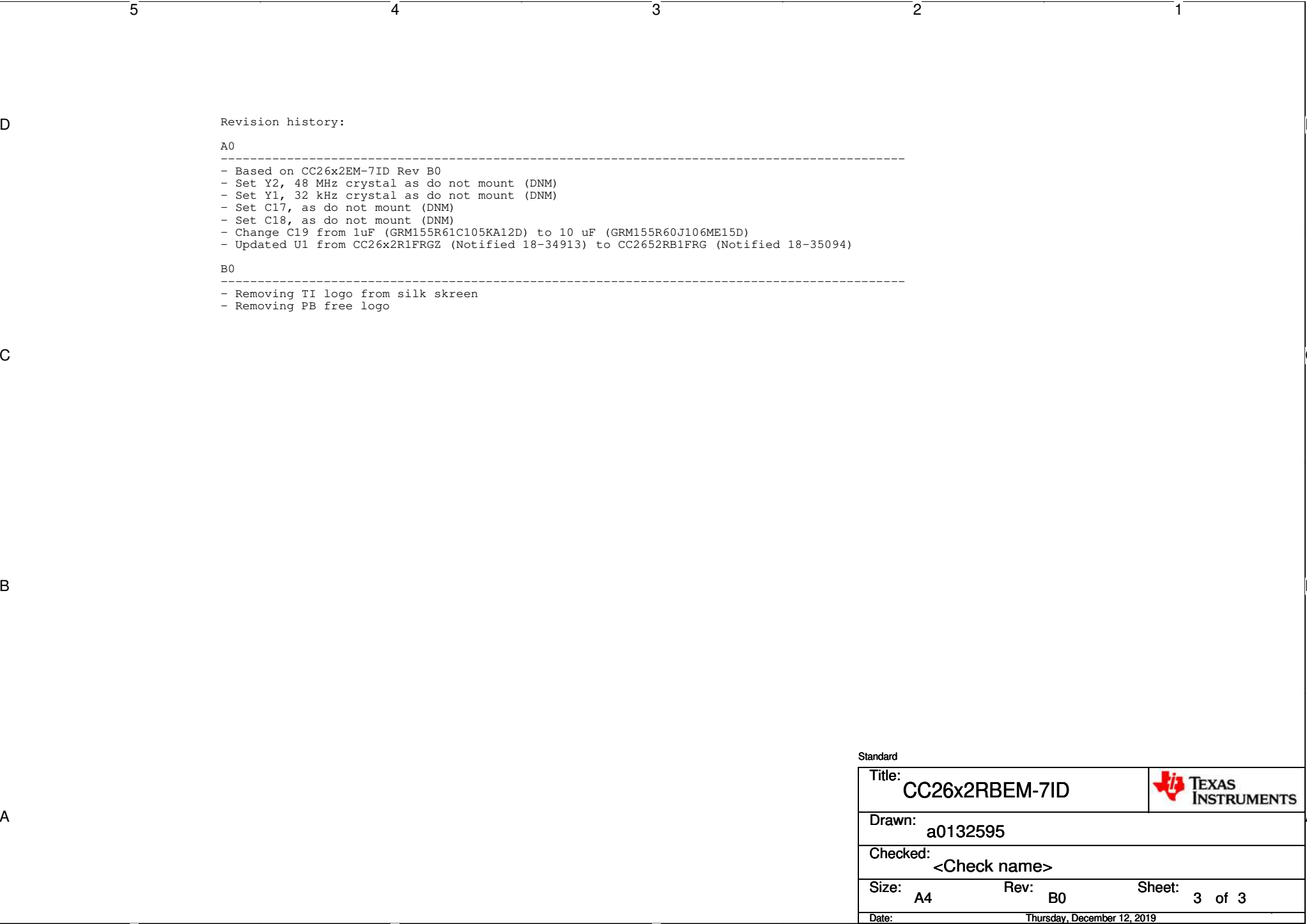


Standard

Title:	CC26x2RBEM-7ID	TEXAS INSTRUMENTS
Drawn:	a0132595	
Checked:	<Check name>	
Size:	A3	Rev: B0
Date:	Thursday, December 12, 2019	Sheet: 1 of 3




Title: CC26x2RBEM-7ID		 TEXAS INSTRUMENTS
Drawn: a0132595		
Checked: <Check name>		
Size: A4	Rev: B0	
Date: Thursday, December 12, 2019		



Revision history:

- A0
- 
- Based on CC26x2EM-7ID Rev B0
  - Set Y2, 48 MHz crystal as do not mount (DNM)
  - Set Y1, 32 kHz crystal as do not mount (DNM)
  - Set C17, as do not mount (DNM)
  - Set C18, as do not mount (DNM)
  - Change C19 from 1uF (GRM155R61C105KA12D) to 10 uF (GRM155R60J106ME15D)
  - Updated U1 from CC26x2R1FRGZ (Notified 18-34913) to CC2652RB1FRG (Notified 18-35094)
- B0
- 
- Removing TI logo from silk skreen
  - Removing PB free logo

Standard	
Title: CC26x2RBEM-7ID	
Drawn: a0132595	
Checked: <Check name>	
Size: A4	Rev: B0 Sheet: 3 of 3
Date: Thursday, December 12, 2019	