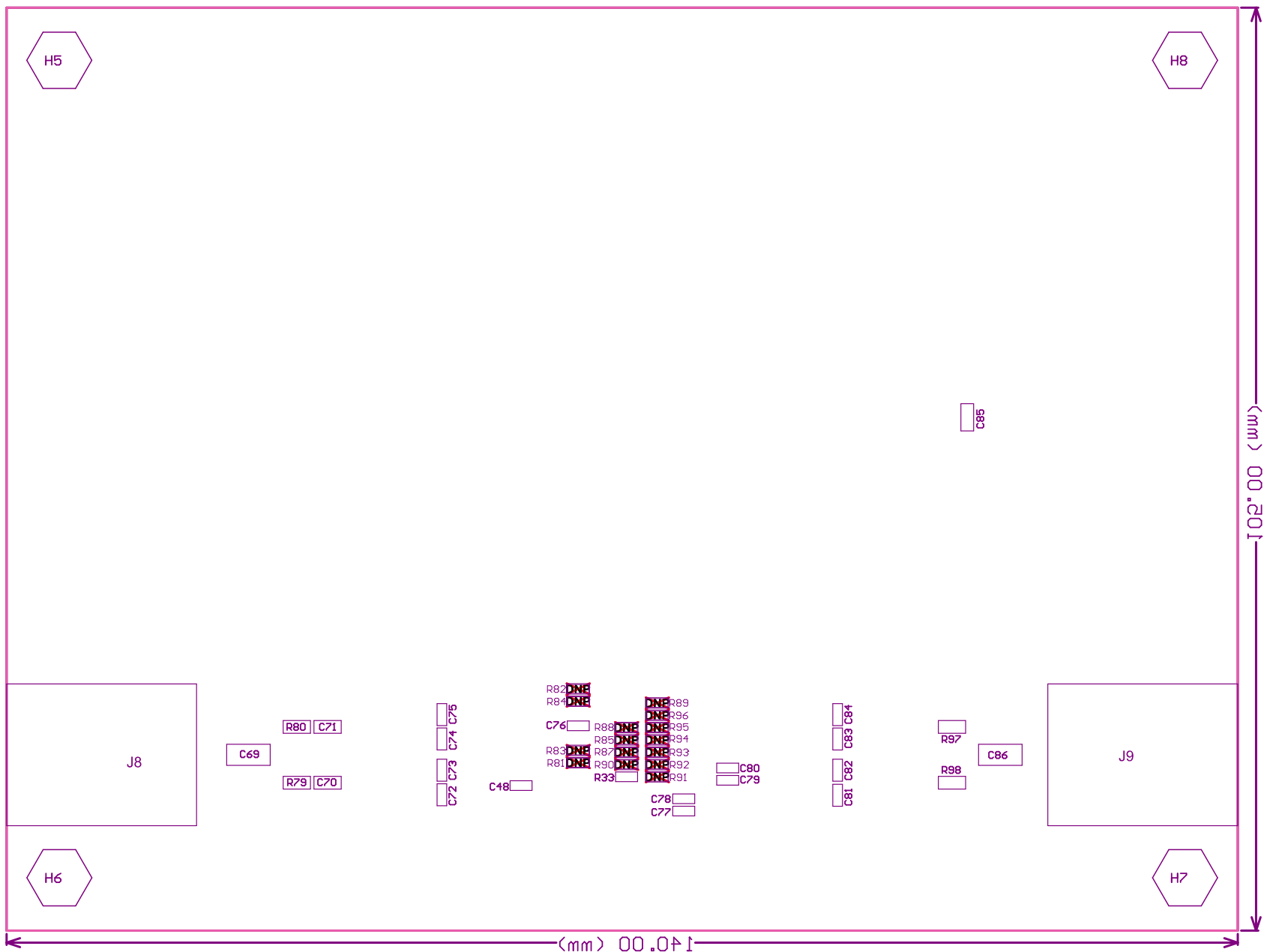


ZZ4	■	Install label in silkscreened box after final wash. Text shall be 8 pt font. Text shall be per the Label Table in the PDF schematic.
ZZ3	■	These assemblies are ESD sensitive, ESD precautions shall be observed.
ZZ2	■	These assemblies must be clean and free from flux and all contaminants. Use of no clean flux is not acceptable.
ZZ1	■	These assemblies must comply with workmanship standards IPC-A-610 Class 2, unless otherwise specified.

COMPONENTS MARKED 'DNP' SHOULD NOT BE POPULATED.
ASSEMBLY VARIANT: 001

PCB VIEWED FROM TOP SIDE	BOARD #: TIDA-010046	REV: E1	SUN REV: Not In VersionControl
M5 Assembly Top	TID #: TIDA-010046		
PLOT NAME = Top Assembly Drawing	GENERATED : 9/16/2019 2:51:39 PM	TEXAS INSTRUMENTS	



COMPONENTS MARKED 'DNP' SHOULD NOT BE POPULATED.
ASSEMBLY VARIANT: 001



PCB VIEWED FROM BOTTOM SIDE	BOARD #: TIDA-010046	REV: E1	SUN REV: Not In VersionControl
M6 Assembly Bottom	TID #: TIDA-010046		
PLOT NAME = Bottom Assembly Drawing	GENERATED : 9/16/2019 2:51:41 PM		TEXAS INSTRUMENTS