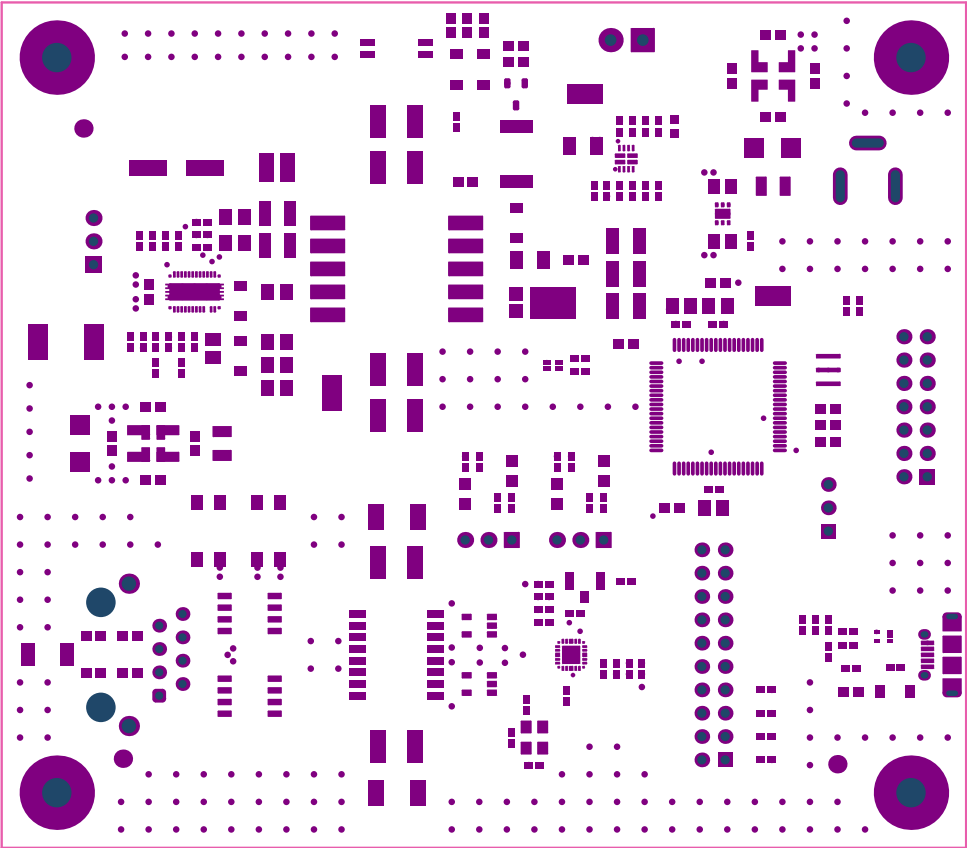
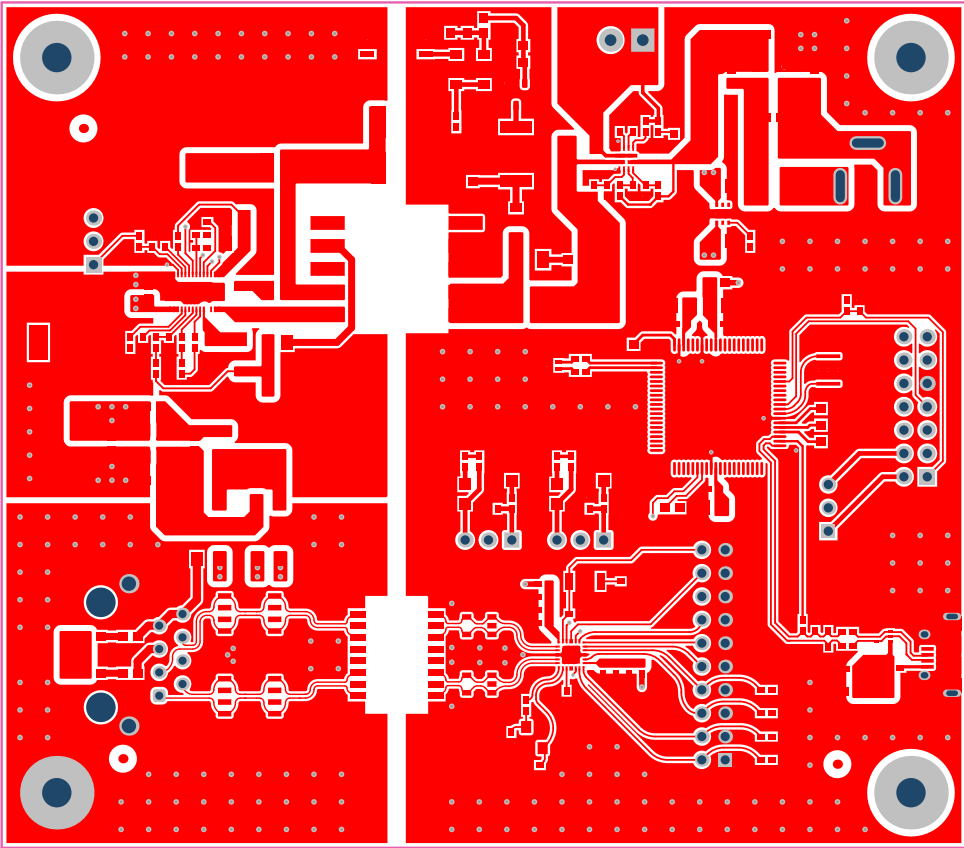


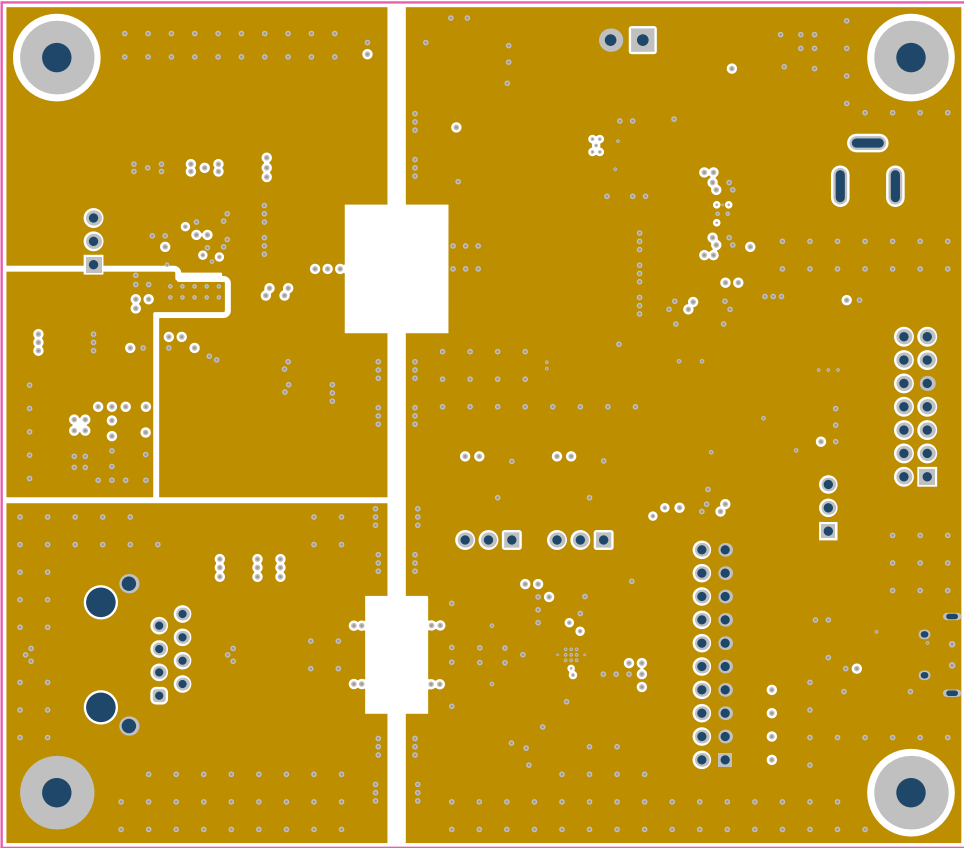
ALL ARTWORK VIEWED FROM TOP SIDE	BOARD #: TIDA-010046	REV: E1	SUN REV: Not In VersionControl
LAYER NAME = Top Overlay	TID #: TIDA-010046		
PLOT NAME = Top Overlay	GENERATED : 9/16/2019 1:00:32 PM		TEXAS INSTRUMENTS



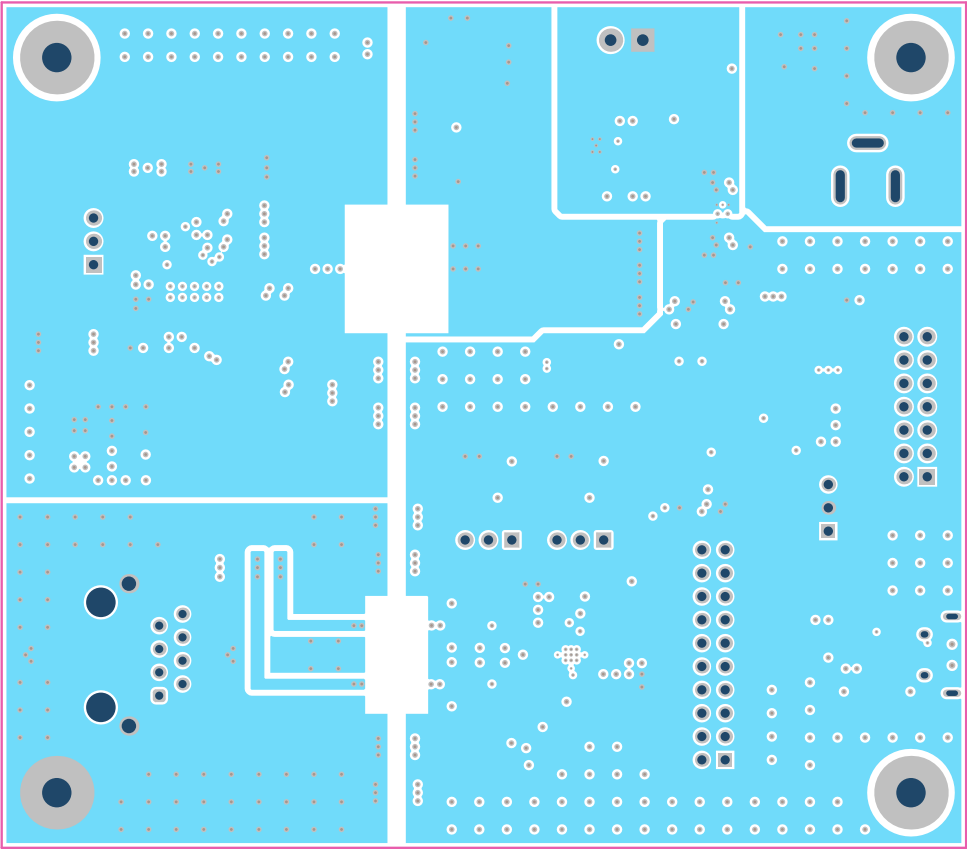
ALL ARTWORK VIEWED FROM TOP SIDE	BOARD #: TIDA-010046	REV: E1	SUN REV: Not In VersionControl
LAYER NAME = Top Solder	TID #: TIDA-010046		
PLOT NAME = Top Solder Mask	GENERATED : 9/16/2019 1:00:34 PM	TEXAS INSTRUMENTS	



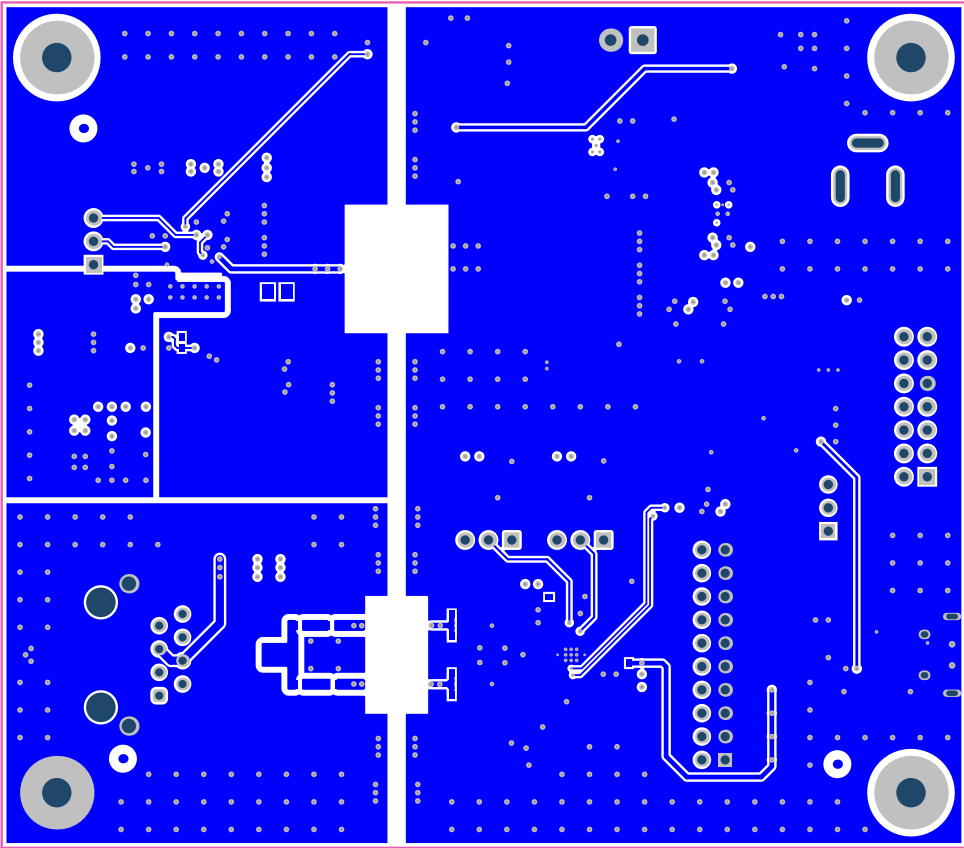
ALL ARTWORK VIEWED FROM TOP SIDE	BOARD #: TIDA-010046	REV: E1	SUN REV: Not In VersionControl
LAYER NAME = Top Layer	TID #: TIDA-010046		
PLOT NAME = Top Layer	GENERATED : 9/16/2019 1:00:35 PM	TEXAS INSTRUMENTS	



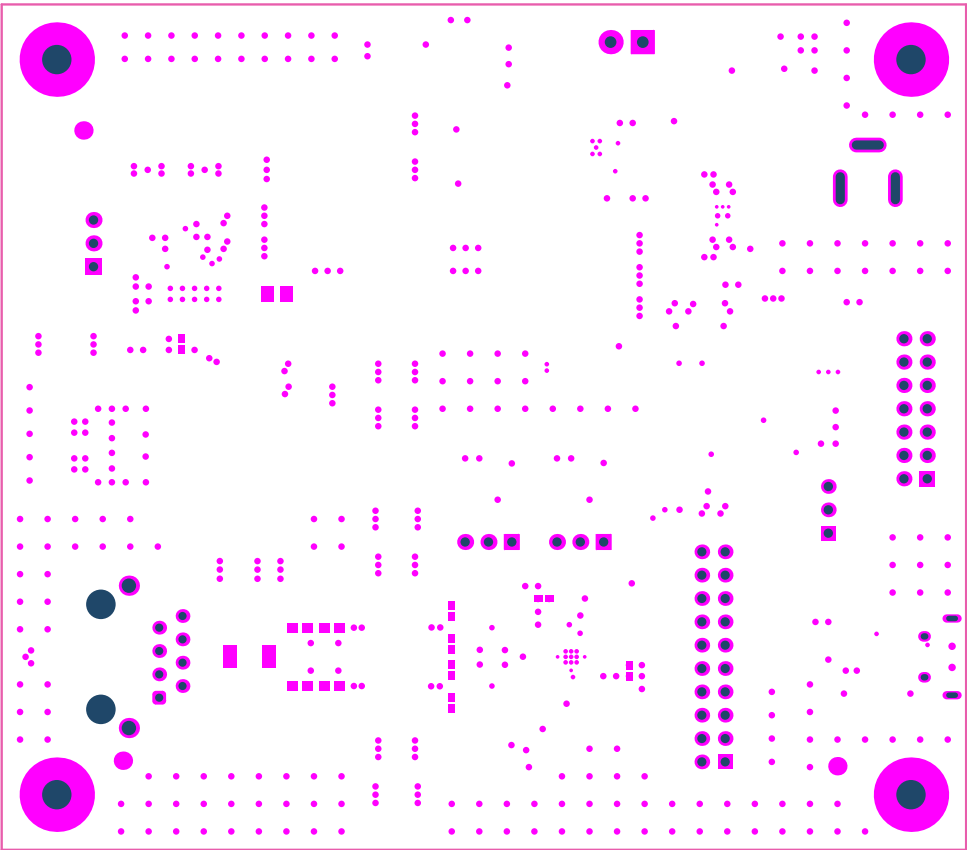
ALL ARTWORK VIEWED FROM TOP SIDE	BOARD #: TIDA-010046	REV: E1	SUN REV: Not In VersionControl
LAYER NAME = GND	TID #: TIDA-010046		
PLOT NAME = Signal Layer 1	GENERATED : 9/16/2019 1:00:36 PM	TEXAS INSTRUMENTS	



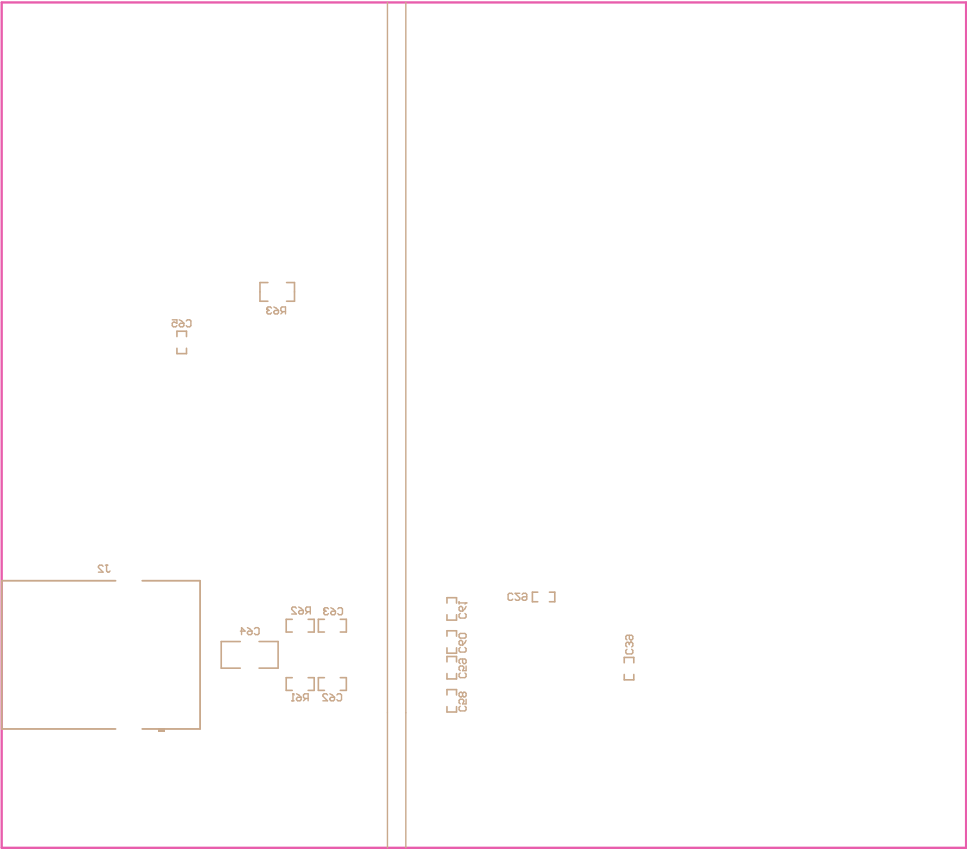
ALL ARTWORK VIEWED FROM TOP SIDE	BOARD #: TIDA-010046	REV: E1	SUN REV: Not In VersionControl
LAYER NAME = PWR	TID #: TIDA-010046		
PLOT NAME = Signal Layer 2	GENERATED : 9/16/2019 1:00:37 PM	TEXAS INSTRUMENTS	



ALL ARTWORK VIEWED FROM TOP SIDE	BOARD #: TIDA-010046	REV: E1	SUN REV: Not In VersionControl
LAYER NAME = Bottom Layer	TID #: TIDA-010046		
PLOT NAME = Bottom Layer	GENERATED : 9/16/2019 1:00:39 PM	TEXAS INSTRUMENTS	



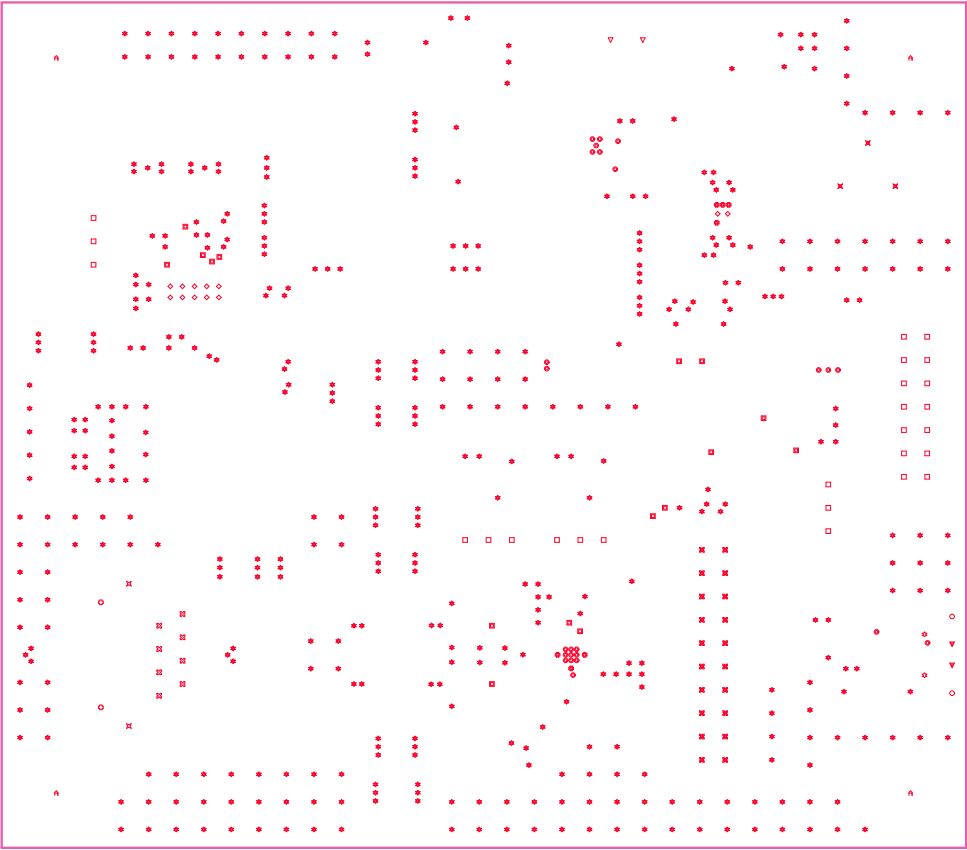
ALL ARTWORK VIEWED FROM TOP SIDE	BOARD #: TIDA-010046	REV: E1	SUN REV: Not In VersionControl
LAYER NAME = Bottom Solder	TID #: TIDA-010046		
PLOT NAME = Bottom Solder Mask	GENERATED : 9/16/2019 1:00:40 PM	TEXAS INSTRUMENTS	



ALL ARTWORK VIEWED FROM TOP SIDE	BOARD #: TIDA-010046	REV: E1	SUN REV: Not In VersionControl
LAYER NAME = Bottom Overlay	TID #: TIDA-010046		
PLOT NAME = Bottom Overlay	GENERATED : 9/16/2019 1:00:41 PM	TEXAS INSTRUMENTS	

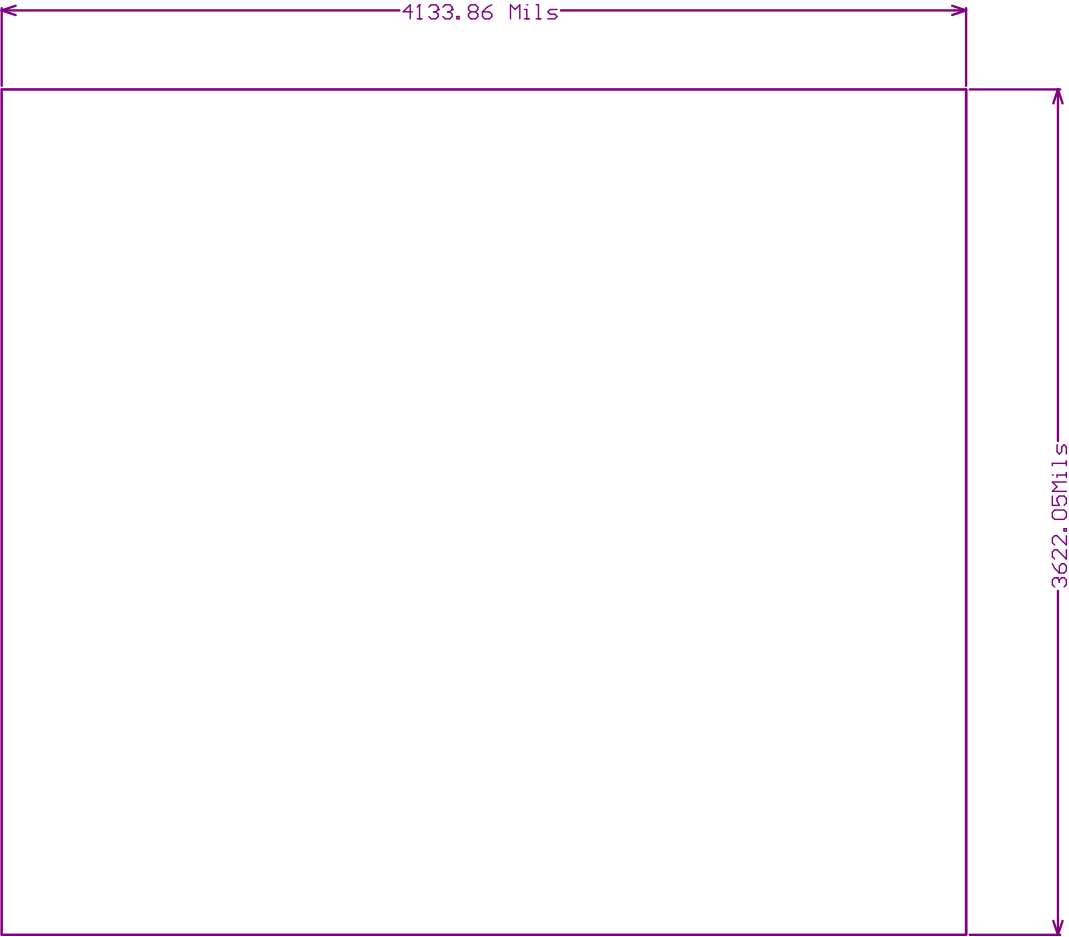
Symbol	Count	Hole Size	Plated	Hole Type	Drill Layer Pair	Hole Length
⊕	7	6.00mil (0.152mm)	PTH	Round	Top Layer - Bottom Layer	-
◇	12	7.87mil (0.200mm)	PTH	Round	Top Layer - Bottom Layer	-
◎	24	8.00mil (0.203mm)	PTH	Round	Top Layer - Bottom Layer	-
▣	16	10.00mil (0.254mm)	PTH	Round	Top Layer - Bottom Layer	-
★	453	12.00mil (0.305mm)	PTH	Round	Top Layer - Bottom Layer	-
▼	2	14.00mil (0.356mm)	PTH	Round	Top Layer - Bottom Layer	-
○	2	23.62mil (0.600mm)	PTH	Slot	Top Layer - Bottom Layer	51.18mil (1.300mm)
☆	2	27.56mil (0.700mm)	PTH	Slot	Top Layer - Bottom Layer	33.47mil (0.850mm)
⊗	8	35.04mil (0.890mm)	PTH	Round	Top Layer - Bottom Layer	-
⊗	20	39.37mil (1.000mm)	PTH	Round	Top Layer - Bottom Layer	-
✕	3	39.37mil (1.000mm)	PTH	Slot	Top Layer - Bottom Layer	137.79mil (3.500mm)
□	26	40.00mil (1.016mm)	PTH	Round	Top Layer - Bottom Layer	-
▽	2	50.00mil (1.270mm)	PTH	Round	Top Layer - Bottom Layer	-
✕	2	61.81mil (1.570mm)	PTH	Round	Top Layer - Bottom Layer	-
⌘	4	125.98mil (3.200mm)	PTH	Round	Top Layer - Bottom Layer	-
⊕	2	126.58mil (3.215mm)	NPTH	Round	Top Layer - Bottom Layer	-
	585 Total					

Slot definitions : Routed Path Length = Calculated from tool start centre position to tool end centre position.
Hole Length = Routed Path Length + Tool Size = Slot length as defined in the PCB layout



DRILL TOLERANCE
FOR 6MIL DRILL +0/-6MIL
FOR 7.87MIL DRILL +0/-7.87MIL
FOR 8MIL DRILL +0/-8MIL
FOR 10MIL DRILL +0/-10MIL
FOR 12MIL DRILL +0/-12MIL
FOR 14MIL DRILL +0/-14MIL
FOR PTH DRILL +/-3MIL
FOR NPTH DRILL +/-2MIL

ALL ARTWORK VIEWED FROM TOP SIDE	BOARD #: TIDA-010046	REV: E1	SUN REV: Not In VersionControl
LAYER NAME = Drill Drawing	TID #: TIDA-010046		
PLOT NAME = Drill Drawing	GENERATED : 9/16/2019 1:00:42 PM	TEXAS INSTRUMENTS	



ALL ARTWORK VIEWED FROM TOP SIDE	BOARD #: TIDA-010046	REV: E1	SUN REV: Not In VersionControl
LAYER NAME =	TID #: TIDA-010046		
PLOT NAME = Board Dimensions	GENERATED : 9/16/2019 1:01:22 PM	TEXAS INSTRUMENTS	