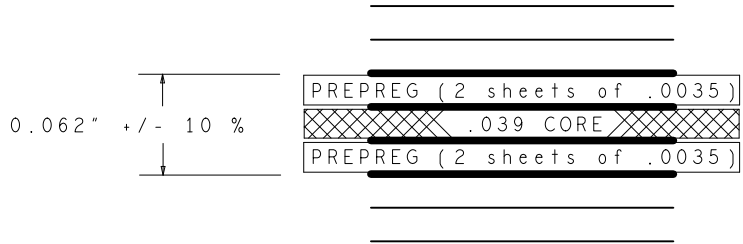


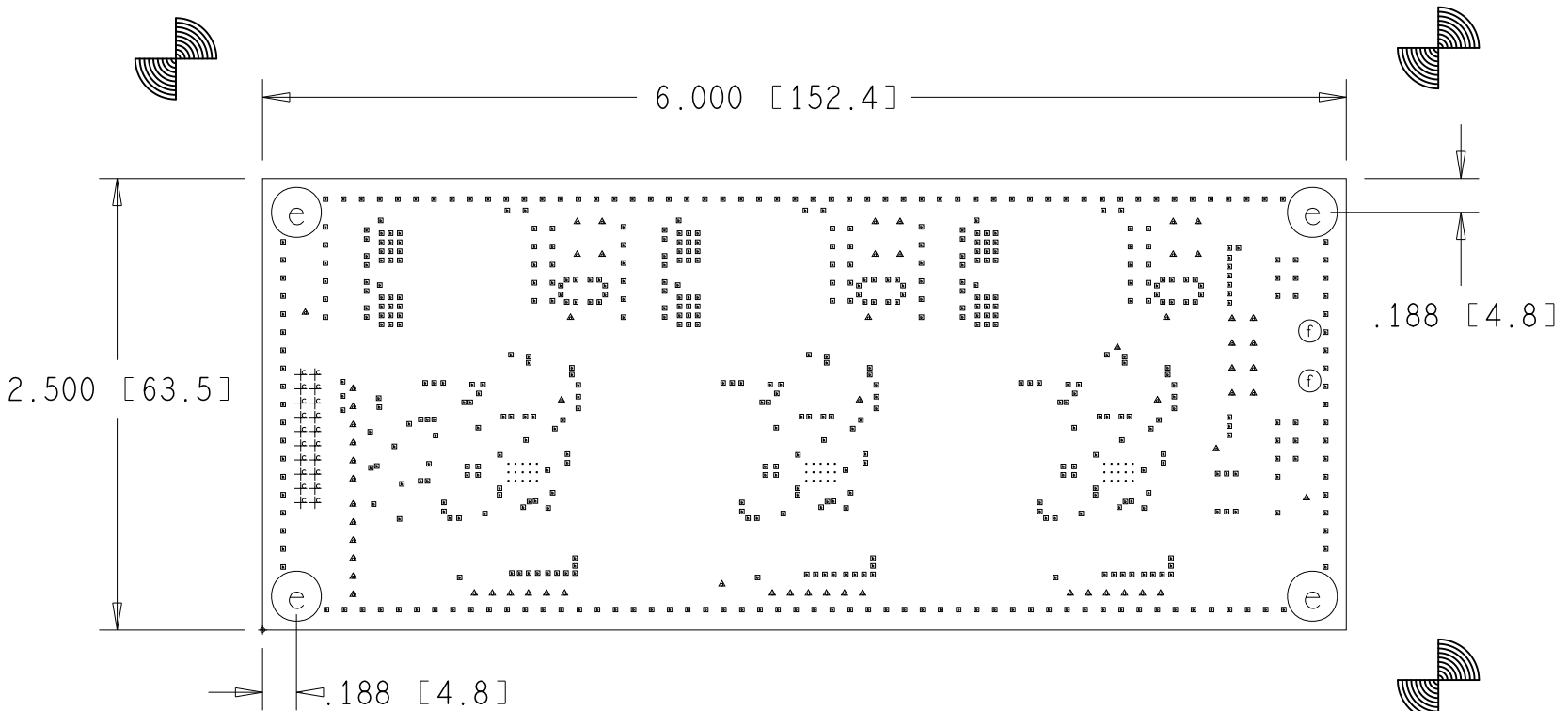
LAYER STACKUP



LAYER DEFINITION	FINISH Cu WT.
SILKSCREEN PRIMARY SIDE	
SOLDERMASK PRIMARY SIDE	
LAYER 1 PRIMARY SIDE	2 oz
LAYER 2 (GND)	2 oz
LAYER 3 (PWR)	2 oz
LAYER 4 SECONDARY SIDE	2 oz
SOLDERMASK SECONDARY SIDE	
SILKSCREEN SECONDARY SIDE	

THIS IN A NON-IMPEDANCE CONTROLLED BOARD

DRILL CHART: TOP to BOTTOM				
ALL UNITS ARE IN MILS				
FIGURE	SIZE	TOLERANCE	PLATED	QTY
.	8.0	+0.0/-8.0	PLATED	45
▪	12.0	+0.0/-12.0	PLATED	554
+	33.62	+3.0/-3.0	PLATED	20
▲	40.0	+3.0/-3.0	PLATED	61
ⓔ	147.0	+3.0/-3.0	PLATED	4
ⓕ	120.0	+3.0/-3.0	NON-PLATED	2



COMPONENT SIDE VIEW

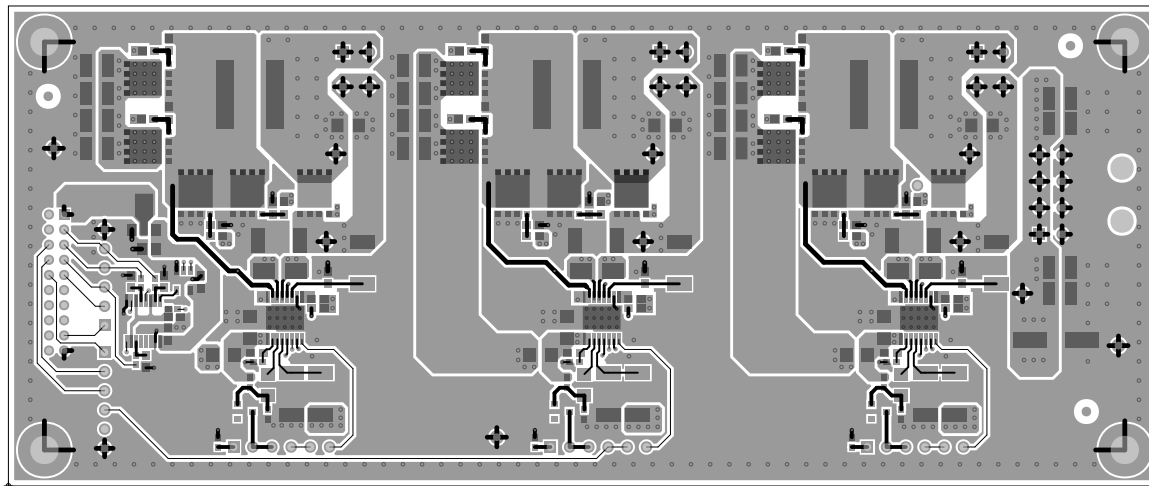
FAB NOTES:

- ALL DIMENSIONS ARE IN INCHES UNLESS OTHERWISE NOTED. ALL BOARD OUTLINE DIMENSION TOLERANCES ARE +/- .010".
- THE PWB SHALL BE FABRICATED TO IPC-6012, CLASS 2 AND WORKMANSHIP SHALL CONFORM TO IPC-A-600, CLASS 2. CURRENT REVISIONS.
- BOARD MATERIAL SHALL BE 180 Tg/340 Td ISOLA FR-370HR OR EQUIVALENT, RoHS COMPLIANT AND LEAD FREE ASSEMBLY CAPABLE. BOARD MATERIAL SHALL MEET OR EXCEED IPC-4101B. RoHS CERTIFICATE OF CONFORMANCE SHALL BE DELIVERED WITH EACH LOT.
- THE BOARD NEEDS TO BE CONSTRUCTED AND MARKED WITH UL94V-0 FLAME-RETARDANT MATERIAL.
- MINIMUM COPPER WALL THICKNESS OF PLATED-THRU HOLES TO BE .001 INCH, WITH A MINIMUM ANNULAR RING OF .001 INCH.
- OVERALL BOARD THICKNESS TO BE .062 +/- 10% AND APPLIES AFTER ALL LAMINATION AND PLATING PROCESSES, MEASURED FROM COPPER TO COPPER.
- MAX. WARP & TWIST TO BE .0075 INCHES PER INCH.
- BOARD MUST BE ELECTRICALLY TESTED USING SUPPLIED IPC-D-356 NETLIST.

PROCESS NOTES:

- PLATE ALL EXPOSED AREAS WITH ELECTROLESS IMMERSION GOLD, NICKEL 100 MIN MICROINCHES THK GOLD 2-6 MICROINCHES THK.
- APPLY LPI SOLDERMASK OVER BARE COPPER (SMOBC), COLOR: GREEN. SOLDERMASK SHALL CONFORM TO IPC-SM-840, CLASS H. CURRENT REV. VIAS ARE TENTED OVER ON TOP SIDE ONLY (DESIGN INTENT) EXCEPT THERMAL VIAS.
- FABRICATION VENDOR IS ALLOWED TO INCREASE SOLDERMASK COMPONENT PADS BY A MAXIMUM 1 MIL ON EACH SIDE OVER THE COPPER PAD IN ORDER TO MEET TOOLING REQUIREMENTS WHILE MAINTAINING WEBBING BETWEEN ADJACENT PADS.
- APPLY LPI SILKSCREEN OR EQUIVALENT PER THE ARTWORK. COLOR: WHITE.

TIDA - 080008		
BOARD NAME: DLP ECD LED Driver_PCB		DESCRIPTION : FABRICATION DRAWING
PROJECT#: DLP ECD LED Driver	DATE : 24-FEB-2020	REVISION : B



TIDA - 080008

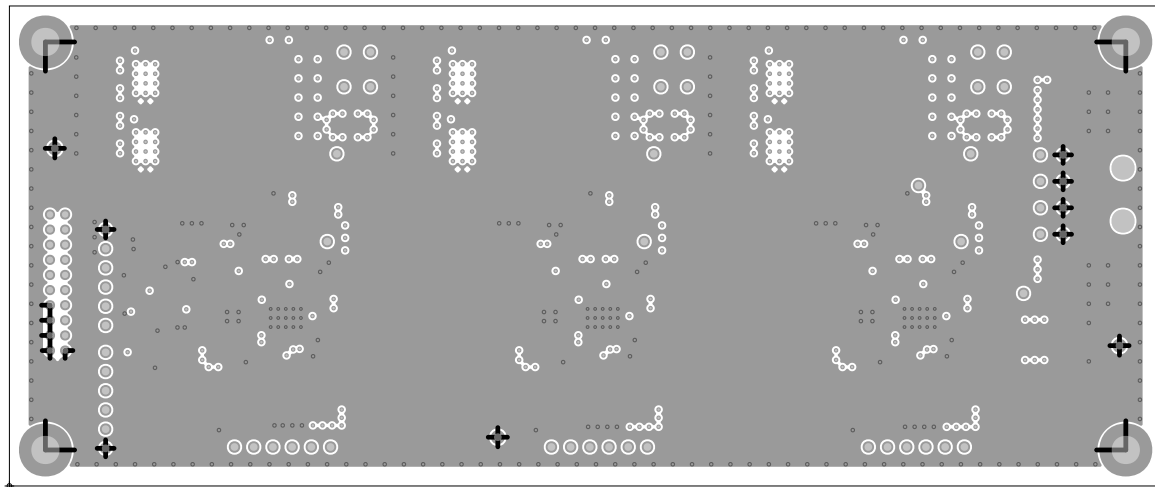
BOARD NAME: DLP ECD LED Driver_PCB

DESCRIPTION :
LAYER 1 - TOP

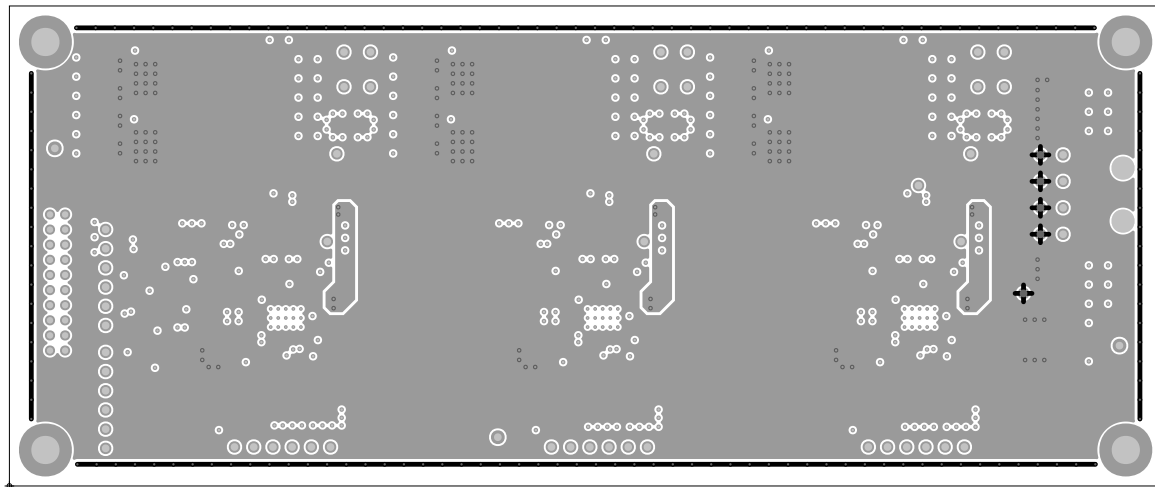
PROJECT#: DLP ECD LED Driver

DATE : 24-FEB-2020

REVISION : B



TIDA - 080008		
BOARD NAME: DLP ECD LED Driver_PCB		DESCRIPTION : LAYER 2 - GND
PROJECT#: DLP ECD LED Driver	DATE : 24-FEB-2020	REVISION : B



TIDA - 080008

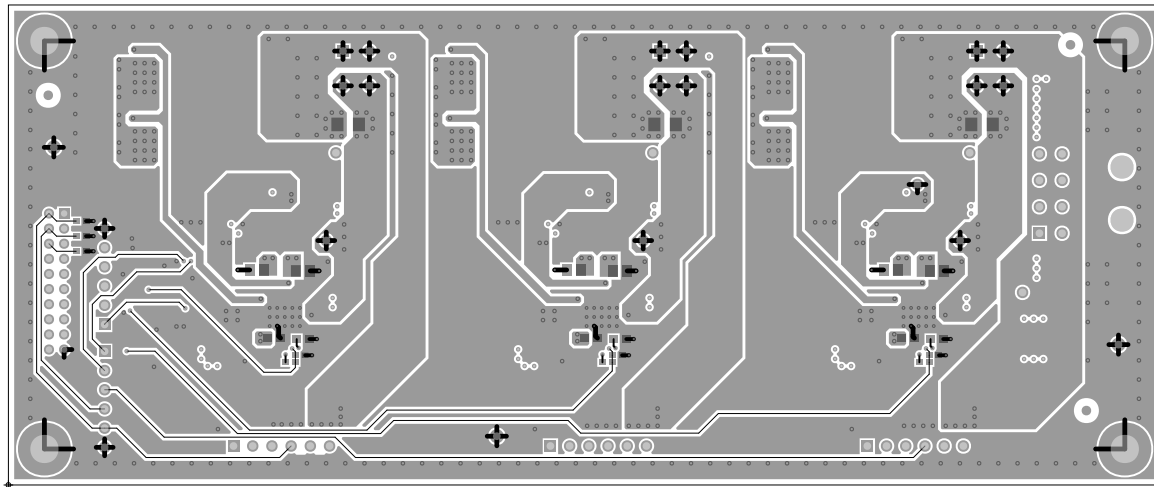
BOARD NAME: DLP ECD LED Driver_PCB

DESCRIPTION :
LAYER 3 - SIGNAL

PROJECT#: DLP ECD LED Driver

DATE : 24-FEB-2020

REVISION : B



TIDA - 080008

BOARD NAME: DLP ECD LED Driver_PCB

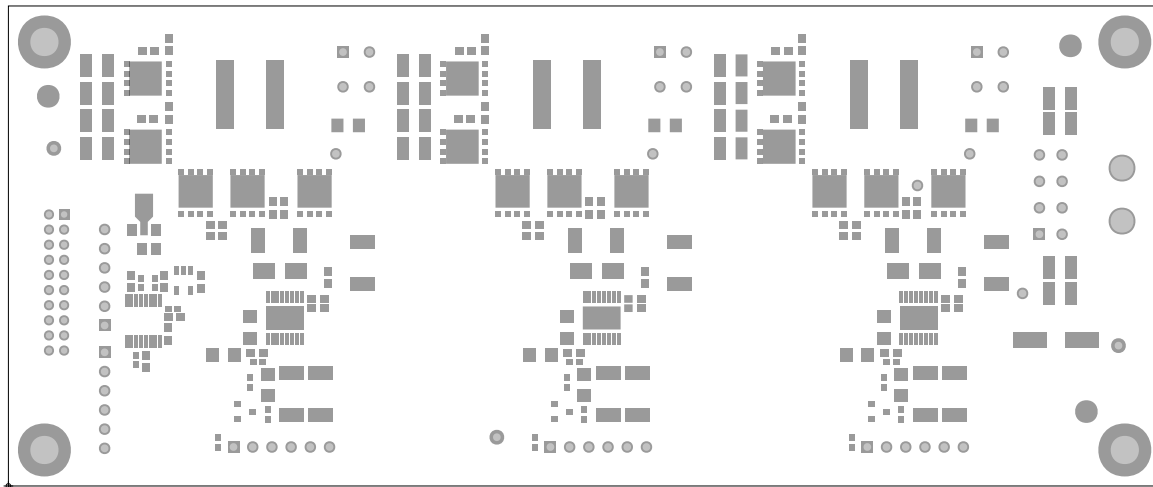
DESCRIPTION :

LAYER 4 - BOTTOM

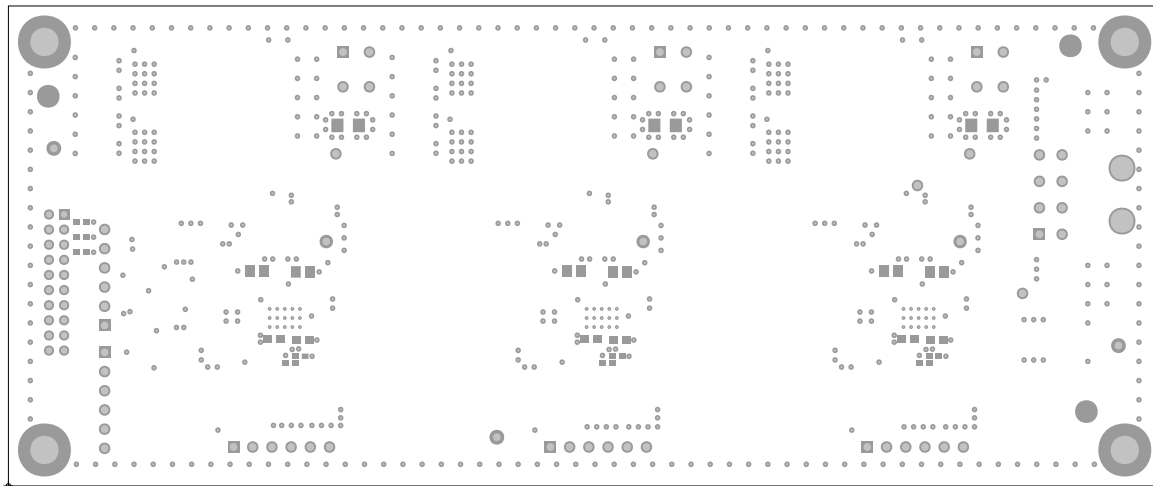
PROJECT#: DLP ECD LED Driver

DATE : 24-FEB-2020

REVISION : B



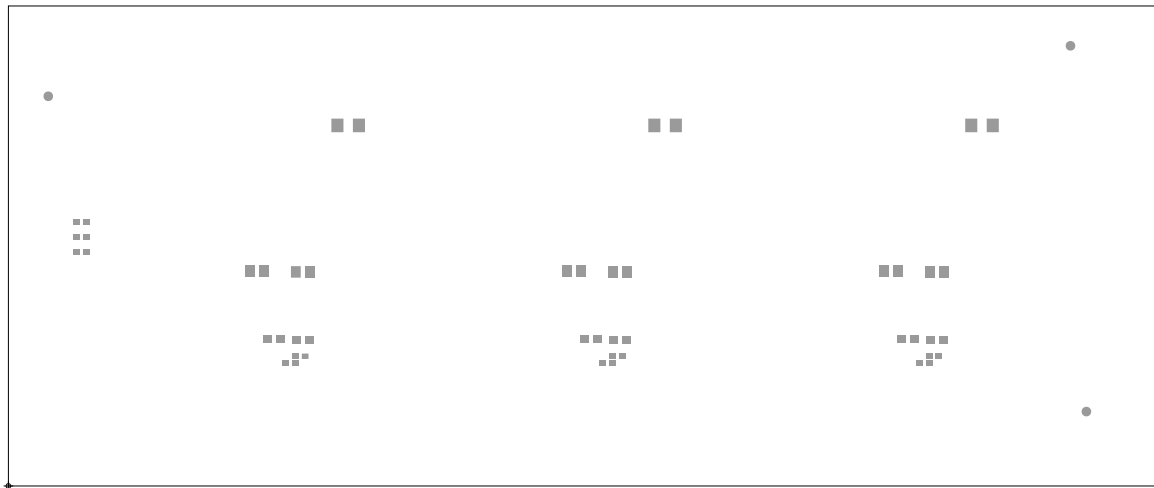
TIDA - 080008		
BOARD NAME: DLP ECD LED Driver_PCB	DESCRIPTION : SOLDERMASK - PRIMARY SIDE	
PROJECT#: DLP ECD LED Driver	DATE : 24-FEB-2020	REVISION : B



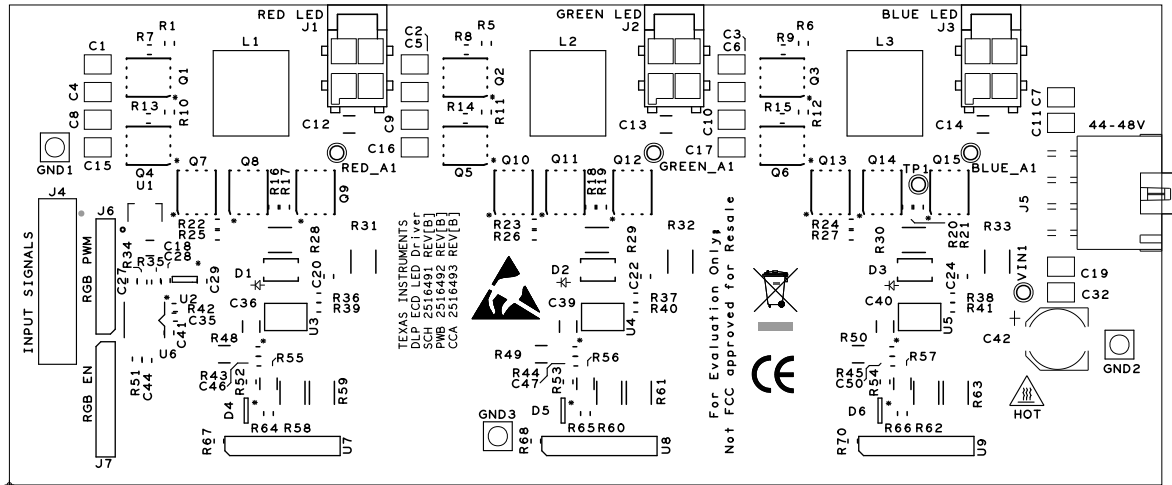
TIDA - 080008		
BOARD NAME: DLP ECD LED Driver_PCB		DESCRIPTION : SOLDERMASK - SECONDARY SIDE
PROJECT#: DLP ECD LED Driver	DATE : 24-FEB-2020	REVISION : B



TIDA - 080008		
BOARD NAME: DLP ECD LED Driver_PCB		DESCRIPTION : PASTEMASK TOP
PROJECT#: DLP ECD LED Driver	DATE : 24-FEB-2020	REVISION : B



TIDA - 080008		
BOARD NAME: DLP ECD LED Driver_PCB	DESCRIPTION : PASTEMASK BOTTOM	
PROJECT#: DLP ECD LED Driver	DATE : 24-FEB-2020	REVISION : B



TIDA - 080008

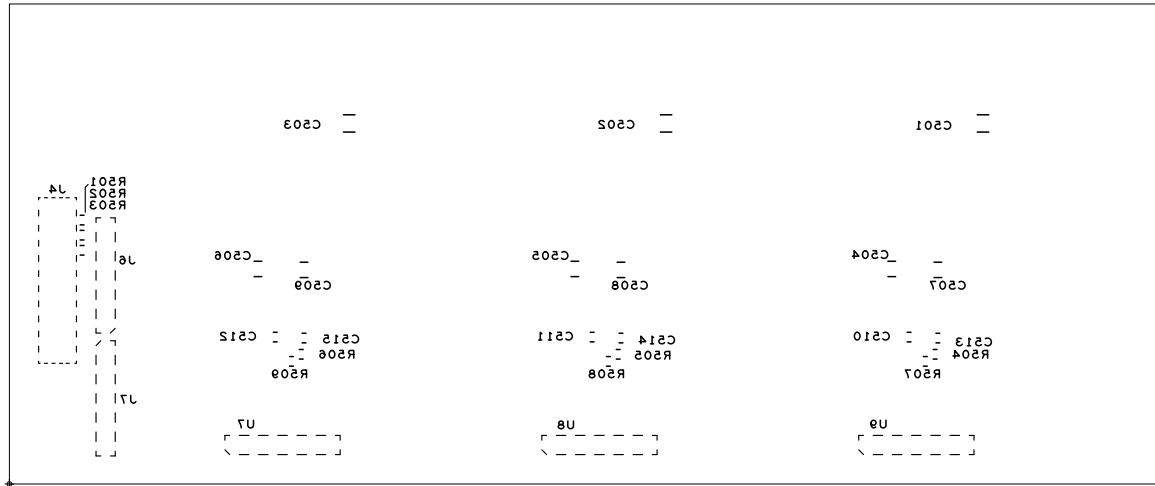
BOARD NAME: DLP ECD LED Driver_PCB

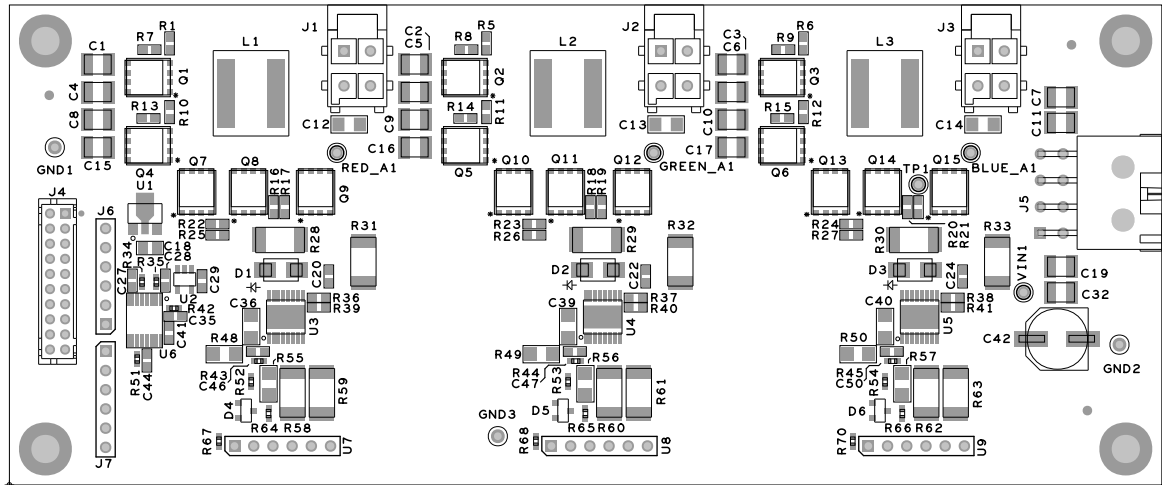
DESCRIPTION :
SILKSCREEN - PRIMARY SIDE

PROJECT#: DLP ECD LED Driver

DATE : 24-FEB-2020

REVISION : B





TIDA - 080008

BOARD NAME: DLP ECD LED Driver_PCB

DESCRIPTION :
ASSEMBLY TOP

PROJECT#: DLP ECD LED Driver

DATE : 24-FEB-2020

REVISION : B

