

Revision History				
Rev	ECN #	Approved Date	Approved by	Notes
N/A	N/A	N/A	N/A	N/A

A

B

C

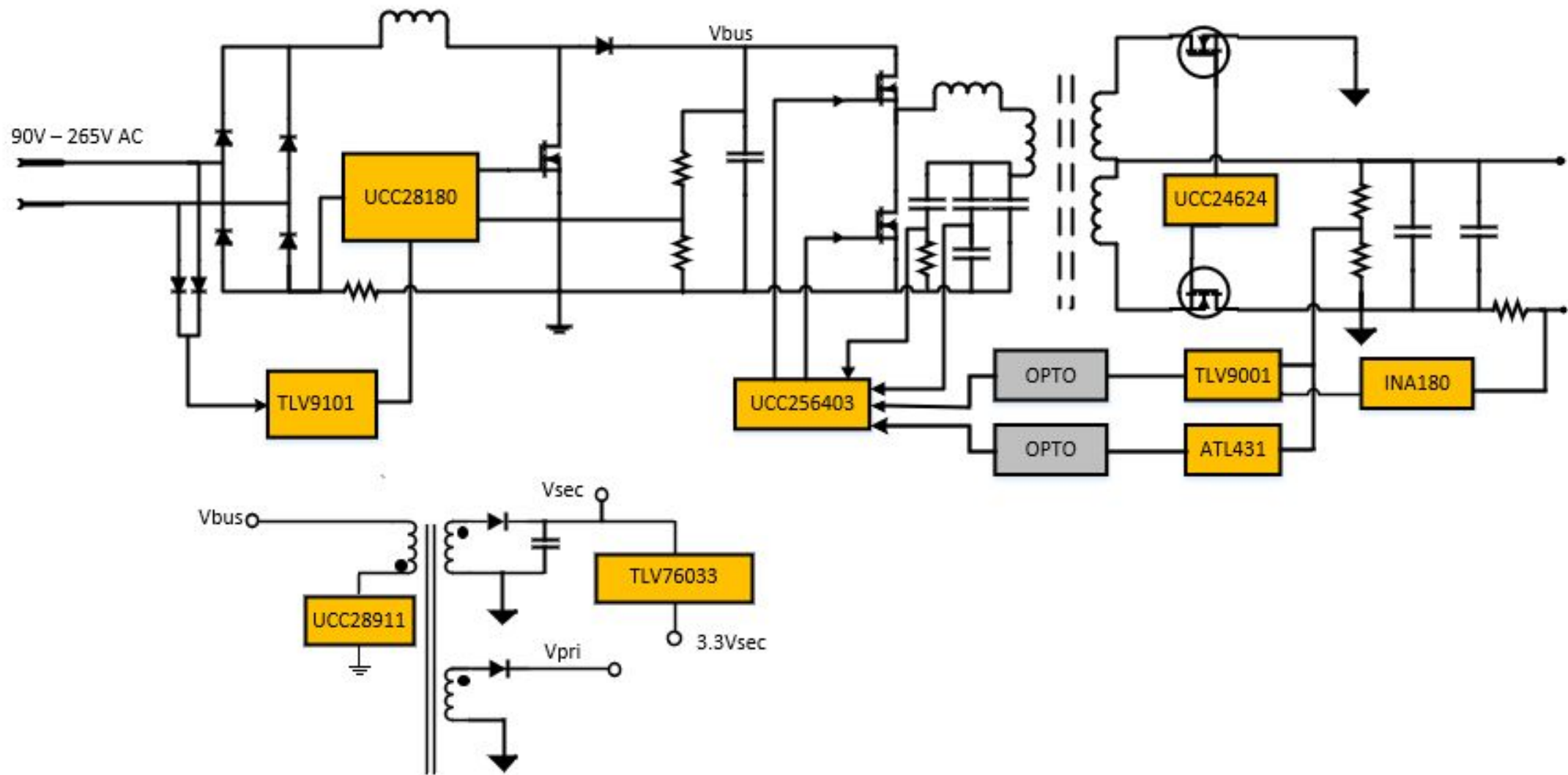
D

A

B

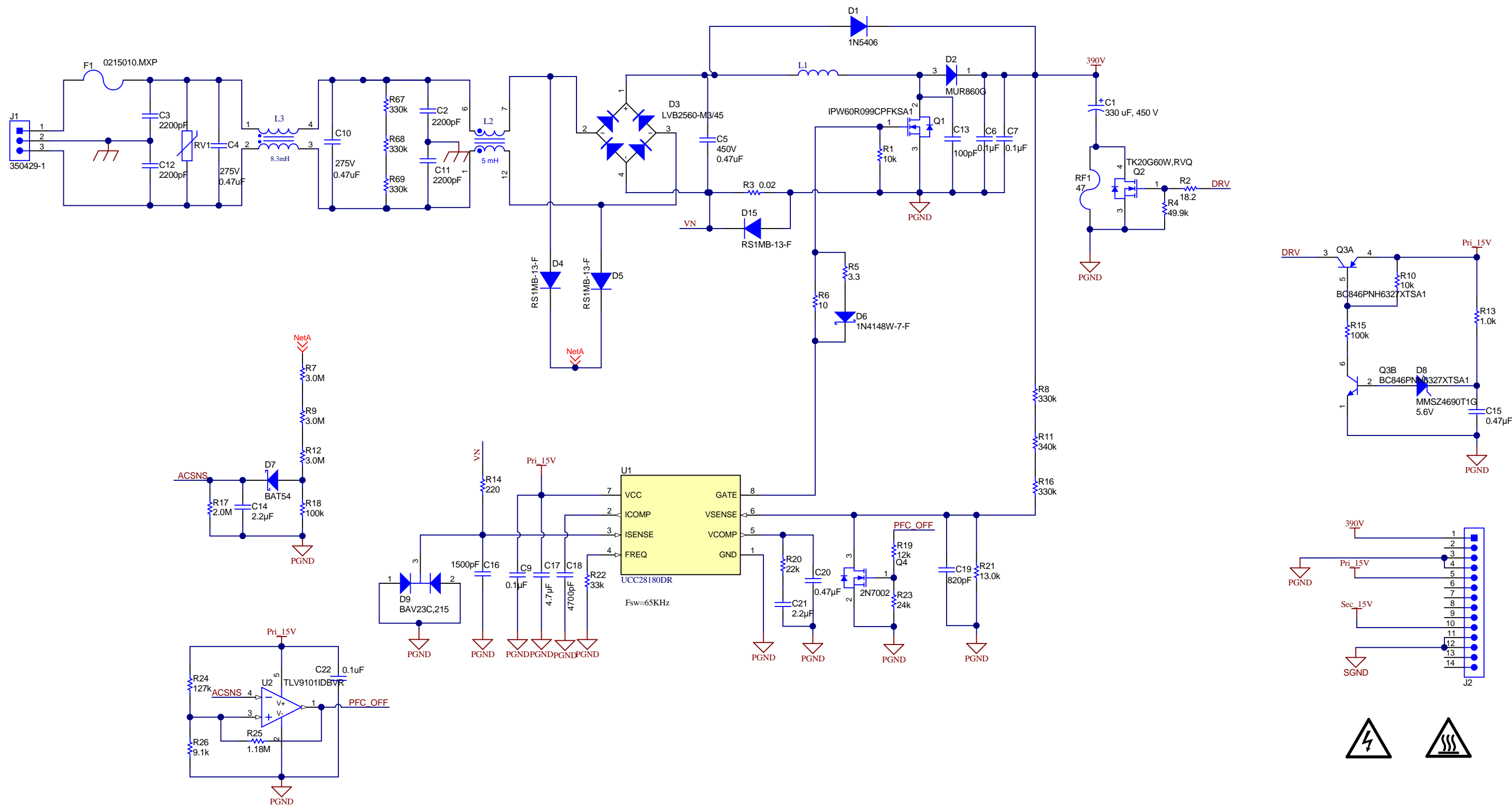
C

D




Texas Instruments and/or its licensors do not warrant the accuracy or completeness of this specification or any information contained therein. Texas Instruments and/or its licensors do not warrant that this design will meet the specifications, will be suitable for your application or fit for any particular purpose, or will operate in an implementation. Texas Instruments and/or its licensors do not warrant that the design is production worthy. You should completely validate and test your design implementation to confirm the system functionality for your application.

Orderable: ChangeMe in variant	Designed for: Public Release	Mod. Date: 1/20/2021
TID #: TIDA-010080	Project Title: Change in menu Project Project Options Parameters	
Number: TIDA-010080	Rev: E1	Sheet Title:
SVN Rev: Not in version control	Assembly Variant: 001	Sheet: 1 of 3
Drawn By:	File: PCB_Project_CoverSheet.SchDoc	Size: B
Engineer: Enter name of project lead	Contact: http://www.ti.com/support	



Texas Instruments and/or its licensors do not warrant the accuracy or completeness of this specification or any information contained therein. Texas Instruments and/or its licensors do not warrant that this design will meet the specifications, will be suitable for your application or fit for any particular purpose, or will operate in an implementation. Texas Instruments and/or its licensors do not warrant that the design is production worthy. You should completely validate and test your design implementation to confirm the system functionality for your application.

Orderable: ChangeMe in variant	Designed for: Public Release	Mod. Date: 1/13/2022	 TEXAS INSTRUMENTS http://www.ti.com © Texas Instruments 2018
TID #: TIDA-010080	Project Title: Change in menu Project\Project Options\Parameters	Sheet Title:	
Number: TIDA-010080 Rev: E1	Assembly Variant: 001	Sheet: 2 of 3	
SVN Rev: Not in version control	File: PFC_SchDoc	Size: B	
Drawn By: Max Wang	Contact: http://www.ti.com/support		

PCB Number: TIDA-010080
PCB Rev: E1

PCB
LOGO
Texas Instruments



PCB
LOGO
FCC disclaimer

PCB
LOGO
WEEE logo

You should delete the nylon screws/standoffs and/or the bumpons as needed for your design (or substitute other parts from Hardware.IntLib). Bumpons are cheaper, but provide less clearance.

Deleting anything else from this page may result in your EVM submission being rejected (until you add them back).

Update the Label Text in the Label Table as needed for each Assembly Variant.

You should delete this note too.

LBL1
PCB Label
THT-14-423-10
Size: 0.65" x 0.20 "

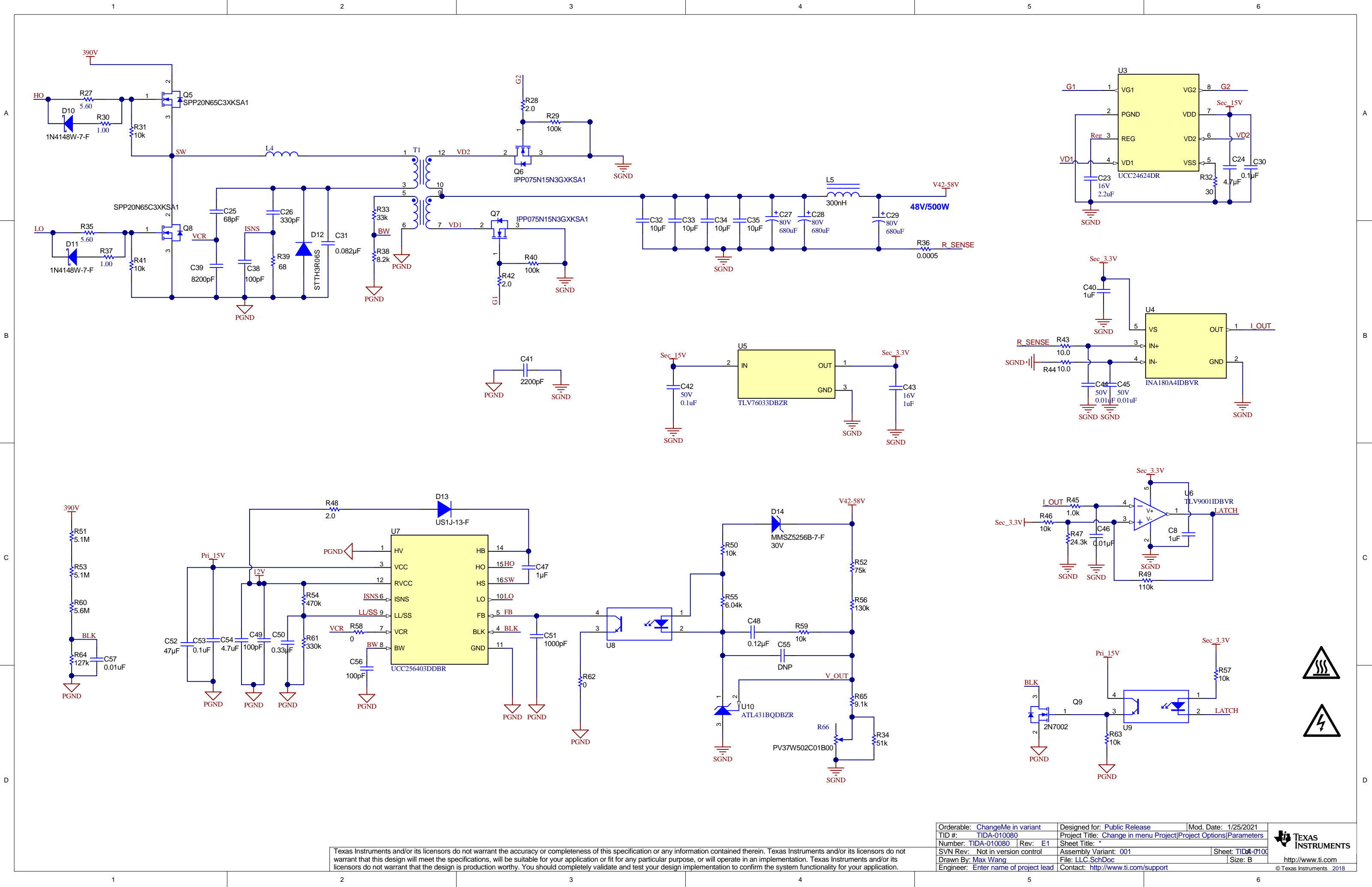
Variant/Label Table	
Variant	Label Text
001	ChangeMe!
002	ChangeMe!

ZZ1
Label Assembly Note
This Assembly Note is for PCB labels only

ZZ2
Assembly Note
These assemblies are ESD sensitive, ESD precautions shall be observed.

ZZ3
Assembly Note
These assemblies must be clean and free from flux and all contaminants. Use of no clean flux is not acceptable.

ZZ4
Assembly Note
These assemblies must comply with workmanship standards IPC-A-610 Class 2, unless otherwise specified.



Texas Instruments and/or its licensors do not warrant the accuracy or completeness of this specification or any information contained therein. Texas Instruments and/or its licensors do not warrant that this design will meet the specifications, will be suitable for your application or fit for any particular purpose, or will operate in an implementation. Texas Instruments and/or its licensors do not warrant that the design is production worthy. You should completely validate and test your design implementation to confirm the system functionality for your application.

Orderable: ChangeMe in variant	Designed for: Public Release	Mod. Date: 1/25/2021
TID #: TIDA-010080	Project Title: Change in menu Project Options	Parameters
Number: TIDA-010080	Rev: E1	Sheet Title: *
SVN Rev: Not in version control	Assembly Variant: 001	Sheet: TIDA-0100
Drawn By: Max Wang	File: LLC.SchDoc	Size: B
Engineer: Enter name of project lead	Contact: http://www.ti.com/support	