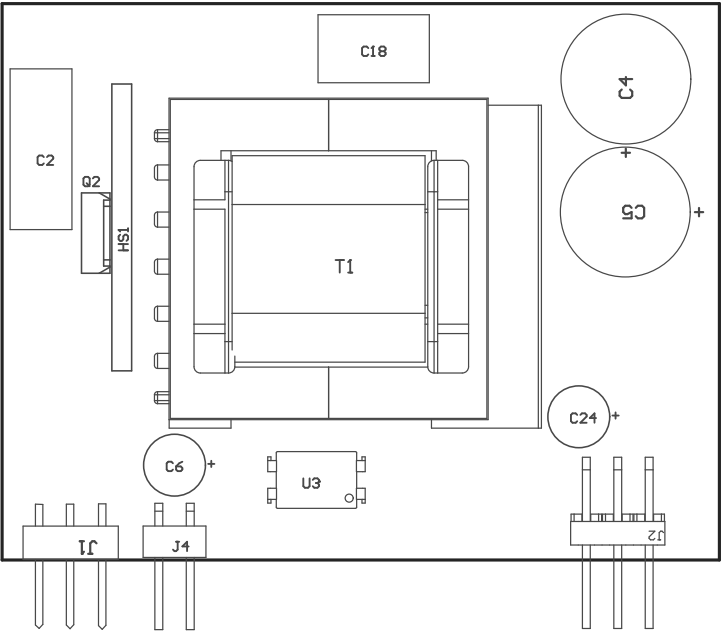
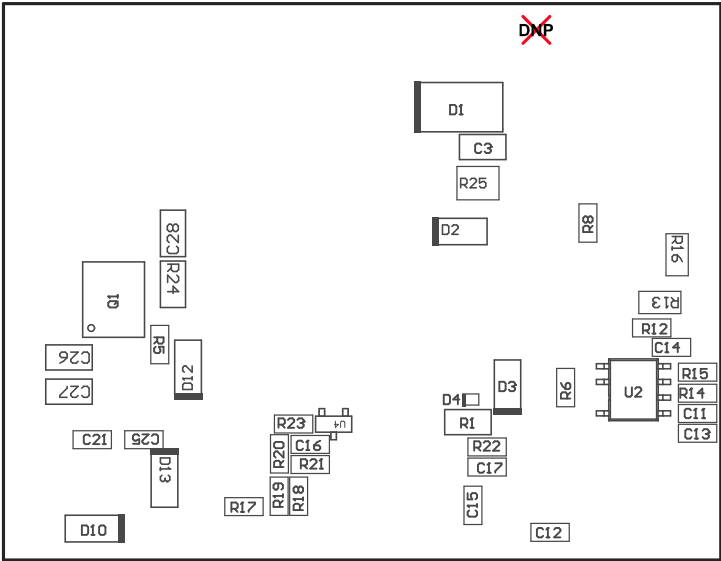


- ZZ1 ■ These assemblies are ESD sensitive, ESD precautions shall be observed.
- ZZ2 ■ These assemblies must be clean and free from flux and all contaminants. Use of no clean flux is not acceptable.
- ZZ3 ■ These assemblies must comply with workmanship standards IPC-A-610 Class 2, unless otherwise specified.



COMPONENTS MARKED 'DNP' SHOULD NOT BE POPULATED.  
ASSEMBLY VARIANT: 001

PCB VIEWED FROM TOP SIDE	BOARD #: XXX###	REV: E1	SUN REV: Not In VersionControl
M5 Assembly Top	TID #: N/A		
PLOT NAME = Top Assembly Drawing	GENERATED : 8/22/2021 12:02:27 AM	TEXAS INSTRUMENTS	



COMPONENTS MARKED 'DNP' SHOULD NOT BE POPULATED.  
ASSEMBLY VARIANT: 001

PCB VIEWED FROM BOTTOM SIDE	BOARD #: XXX###	REV: E1	SUN REV: Not In VersionControl
M6 Assembly Bottom	TID #: N/A		
PLOT NAME = Bottom Assembly Drawing	GENERATED : 8/22/2021 12:02:35 AM	TEXAS INSTRUMENTS	