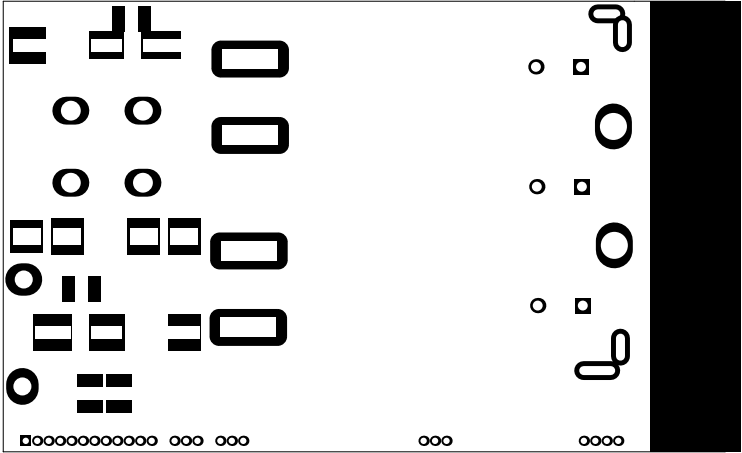
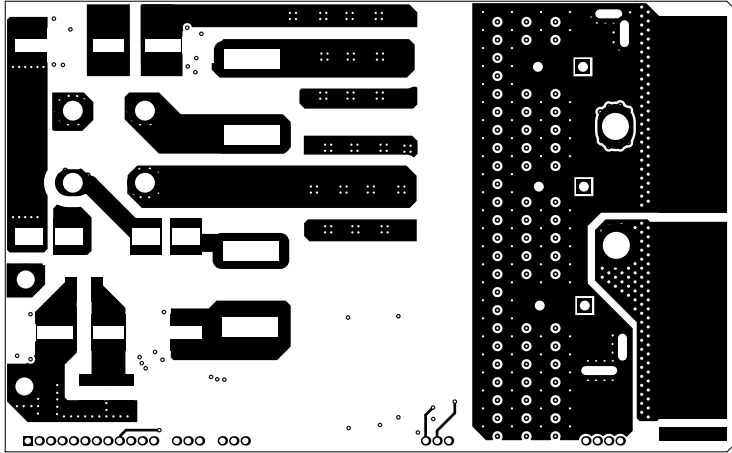


PMP41017E1

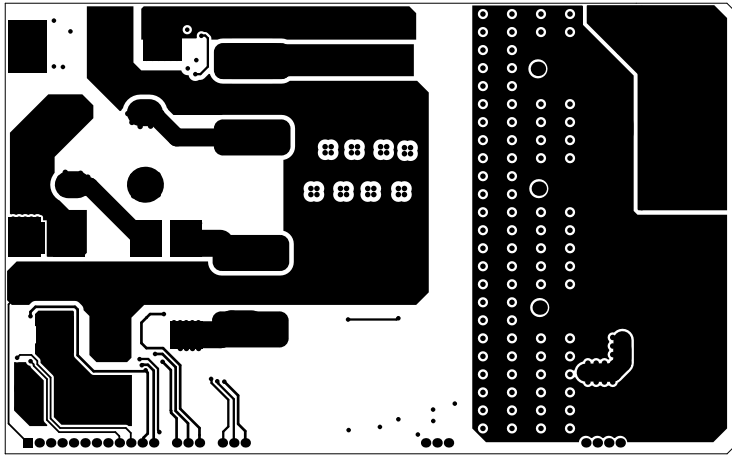
ALL ARTWORK VIEWED FROM TOP SIDE	BOARD #: PMP41017	REV: E1	SUN REV: Not in version control
LAYER NAME = Top Overlay	TID #: N/A		
PLOT NAME = Top Overlay	GENERATED : 5/23/2023 4:10:32 PM	TEXAS INSTRUMENTS	



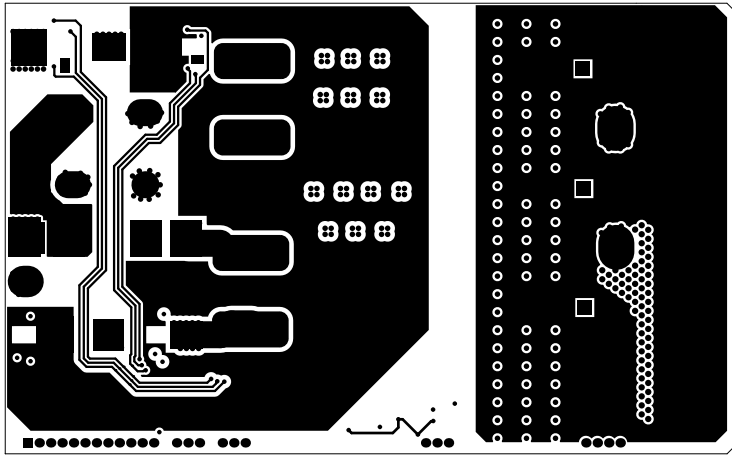
ALL ARTWORK VIEWED FROM TOP SIDE	BOARD #: PMP41017	REV: E1	SUN REV: Not in version control
LAYER NAME = Top Solder	TID #: N/A		
PLOT NAME = Top Solder Mask	GENERATED : 5/23/2023 4:10:32 PM	TEXAS INSTRUMENTS	



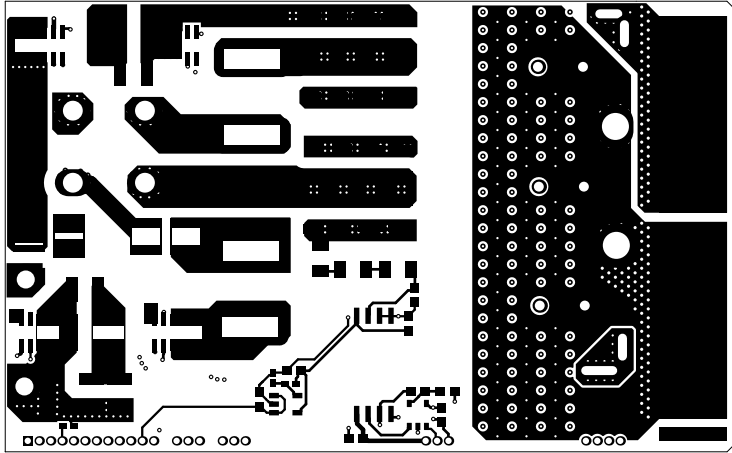
ALL ARTWORK VIEWED FROM TOP SIDE	BOARD #: PMP41017	REV: E1	SUN REV: Not in version control
LAYER NAME = Top Layer	TID #: N/A		
PLOT NAME = Top Layer	GENERATED : 5/23/2023 4:10:33 PM		TEXAS INSTRUMENTS



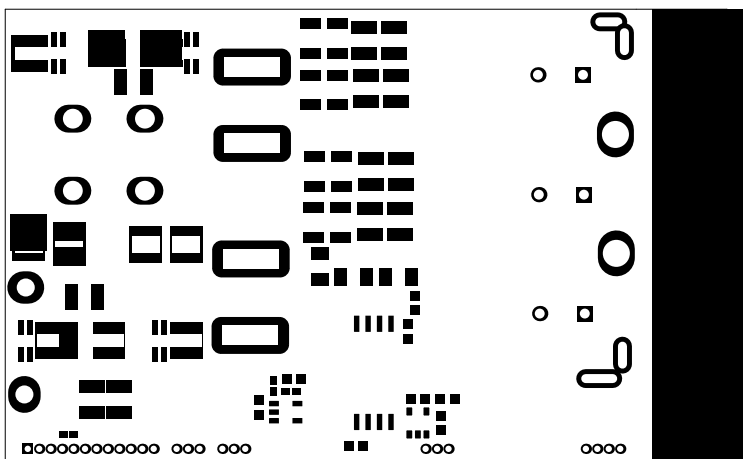
ALL ARTWORK VIEWED FROM TOP SIDE	BOARD #: PMP41017	REV: E1	SUN REV: Not in version control
LAYER NAME =	TID #: N/A		
PLOT NAME = Signal 1	GENERATED : 5/23/2023 4:10:33 PM		TEXAS INSTRUMENTS



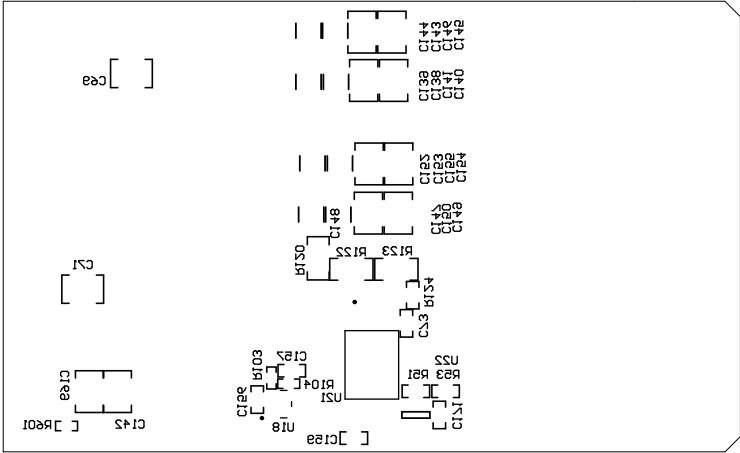
ALL ARTWORK VIEWED FROM TOP SIDE	BOARD #: PMP41017	REV: E1	SUN REV: Not in version control
LAYER NAME =	TID #: N/A		
PLOT NAME = Signal 2	GENERATED : 5/23/2023 4:10:33 PM		TEXAS INSTRUMENTS



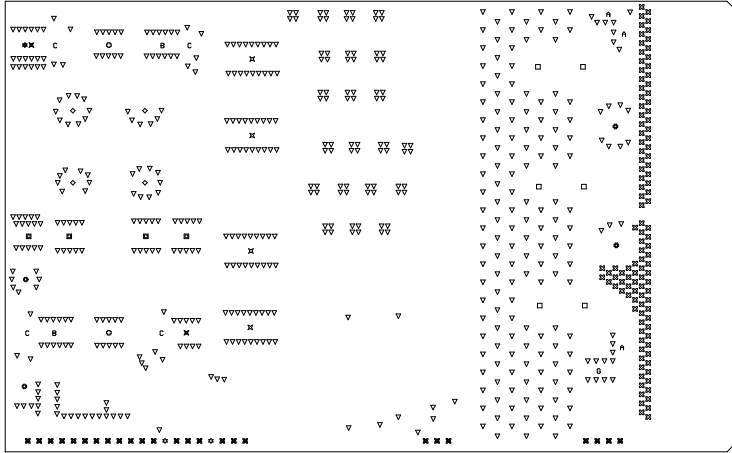
ALL ARTWORK VIEWED FROM TOP SIDE	BOARD #: PMP41017	REV: E1	SVN REV: Not in version control
LAYER NAME = Bottom Layer	TID #: N/A		
PLOT NAME = Bottom Layer	GENERATED : 5/23/2023 4:10:34 PM		TEXAS INSTRUMENTS



ALL ARTWORK VIEWED FROM TOP SIDE	BOARD #: PMP41017	REV: E1	SUN REV: Not in version control
LAYER NAME = Bottom Solder	TID #: N/A		
PLOT NAME = Bottom Solder Mask	GENERATED : 5/23/2023 4:10:34 PM		TEXAS INSTRUMENTS



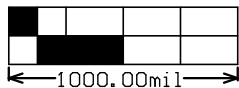
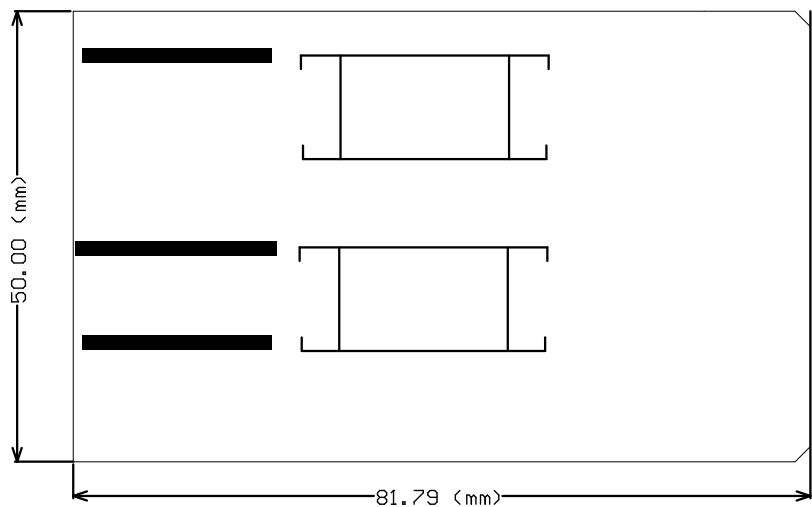
ALL ARTWORK VIEWED FROM TOP SIDE	BOARD #: PMP41017	REV: E1	SUN REV: Not in version control
LAYER NAME = Bottom Overlay	TID #: N/A		
PLOT NAME = Bottom Overlay	GENERATED : 5/23/2023 4:10:34 PM		TEXAS INSTRUMENTS



Symbol	Quantity	Finished Hole Size	Plated	Hole Type	Drill Layer Pair	Hole Tolerance
⚙	2	27.56mil (0.700mm)	NPTH	Round	Top Layer - Bottom Layer	
▽	542	10.00mil (0.254mm)	PTH	Round	Top Layer - Bottom Layer	
⊗	110	13.78mil (0.350mm)	PTH	Round	Top Layer - Bottom Layer	
⊗	25	27.56mil (0.700mm)	PTH	Round	Top Layer - Bottom Layer	
□	6	43.31mil (1.100mm)	PTH	Round	Top Layer - Bottom Layer	
⊙	2	78.74mil (2.000mm)	PTH	Round	Top Layer - Bottom Layer	
◇	4	86.61mil (2.200mm)	PTH	Round	Top Layer - Bottom Layer	
⊗	2	118.11mil (3.000mm)	PTH	Round	Top Layer - Bottom Layer	
C	4	55.12mil (1.400mm)	NPTH	Rectangle	Top Layer - Bottom Layer	
⚙	1	55.12mil (1.400mm)	PTH	Rectangle	Top Layer - Bottom Layer	
⊗	2	55.12mil (1.400mm)	PTH	Rectangle	Top Layer - Bottom Layer	
⊗	2	55.12mil (1.400mm)	PTH	Rectangle	Top Layer - Bottom Layer	
B	2	55.12mil (1.400mm)	PTH	Rectangle	Top Layer - Bottom Layer	
⊗	4	70.87mil (1.800mm)	PTH	Rectangle	Top Layer - Bottom Layer	
⊗	4	86.61mil (2.200mm)	PTH	Rectangle	Top Layer - Bottom Layer	
A	3	39.37mil (1.000mm)	PTH	Slot	Top Layer - Bottom Layer	
G	1	39.37mil (1.000mm)	PTH	Slot	Top Layer - Bottom Layer	
	716 Total					

Slot definitions : Routed Path Length = Calculated from tool start centre position to tool end centre position.
Hole Length = Routed Path Length + Tool Size = Slot length as defined in the PCB layout

ALL ARTWORK VIEWED FROM TOP SIDE	BOARD #: PMP41017	REV: E1	SUN REV: Not in version control
LAYER NAME = Drill Drawing	TID #: N/A		
PLOT NAME = Drill Drawing	GENERATED : 5/23/2023 4:10:35 PM	TEXAS INSTRUMENTS	



ALL ARTWORK VIEWED FROM TOP SIDE	BOARD #: PMP41017	REV: E1	SUN REV: Not in version control
LAYER NAME = M2 Board Dimensions	TID #: N/A		
PLOT NAME = Board Dimensions	GENERATED : 5/23/2023 4:10:36 PM		TEXAS INSTRUMENTS