

A

B

C

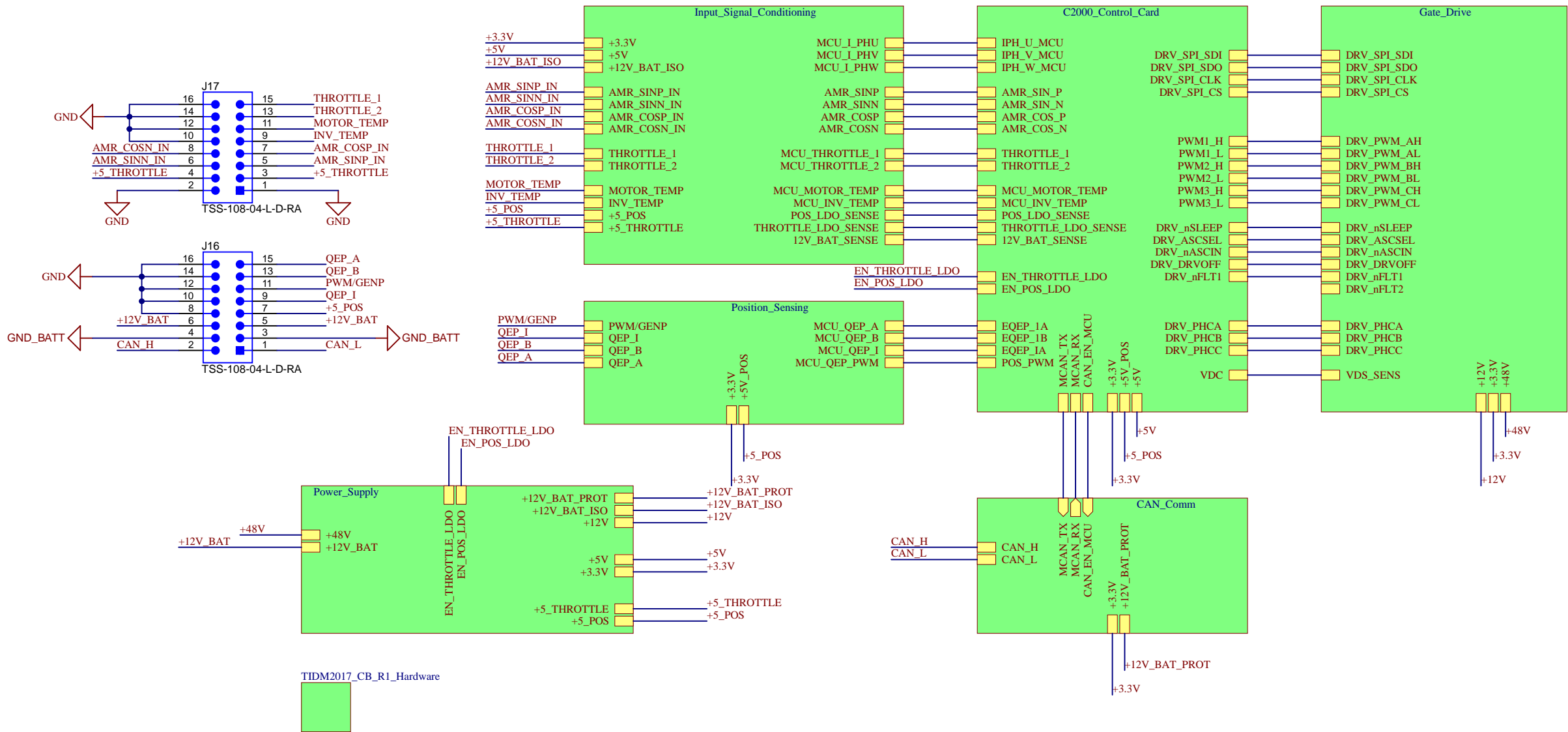
D

A

B

C

D



TIDM2017\_CB\_R1\_Hardware

Texas Instruments and/or its licensors do not warrant the accuracy or completeness of this specification or any information contained therein. Texas Instruments and/or its licensors do not warrant that this design will meet the specifications, will be suitable for your application or fit for any particular purpose, or will operate in an implementation. Texas Instruments and/or its licensors do not warrant that the design is production worthy. You should completely validate and test your design implementation to confirm the system functionality for your application.

Orderable: <a href="#">ChangeMe in variant</a>	Designed for: <a href="#">Public Release</a>	Mod. Date: 12/14/2023
TID #: N/A	Project Title: <a href="#">Control Board 2W Traction Inverter</a>	
Number: <a href="#">TIDM-2017</a>	Rev: <a href="#">C1</a>	Sheet Title:
SVN Rev: Not in version control	Assembly Variant: <a href="#">001</a>	Sheet: <a href="#">1</a> of <a href="#">2</a>
Drawn By: <a href="#">Bhanu Vankayalapati</a>	File: <a href="#">TIDM2017_CB_R1.SchDoc</a>	Size: B
Engineer: <a href="#">Bhanu Vankayalapati</a>	Contact: <a href="#">http://www.ti.com/support</a>	



PCB Number: TIDM-2017  
PCB Rev: C1



<sup>A</sup> You should delete the nylon screws/standoffs and/or the bumpons as needed for your design (or substitute other parts from Hardware.IntLib). Bumpons are cheaper, but provide less clearance.

Deleting anything else from this page may result in your EVM submission being rejected (until you add them back).

Update the Label Text in the Label Table as needed for each Assembly Variant.

You should delete this note too.

LBL1  
PCB Label  
THT-14-423-10  
Size: 0.65" x 0.20 "

ZZ1  
Label Assembly Note  
This Assembly Note is for PCB labels only

Variant/Label Table	
Variant	Label Text
001	ChangeMe!
002	ChangeMe!

ZZ2  
Assembly Note  
These assemblies are ESD sensitive, ESD precautions shall be observed.

ZZ3  
Assembly Note  
These assemblies must be clean and free from flux and all contaminants. Use of no clean flux is not acceptable.

ZZ4  
Assembly Note  
These assemblies must comply with workmanship standards IPC-A-610 Class 2, unless otherwise specified.

1

2

3

4

5

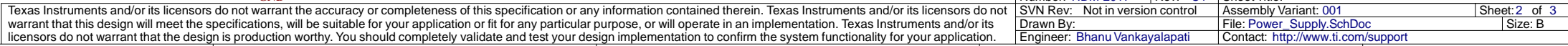
6

A

B

C

D



A

A

B

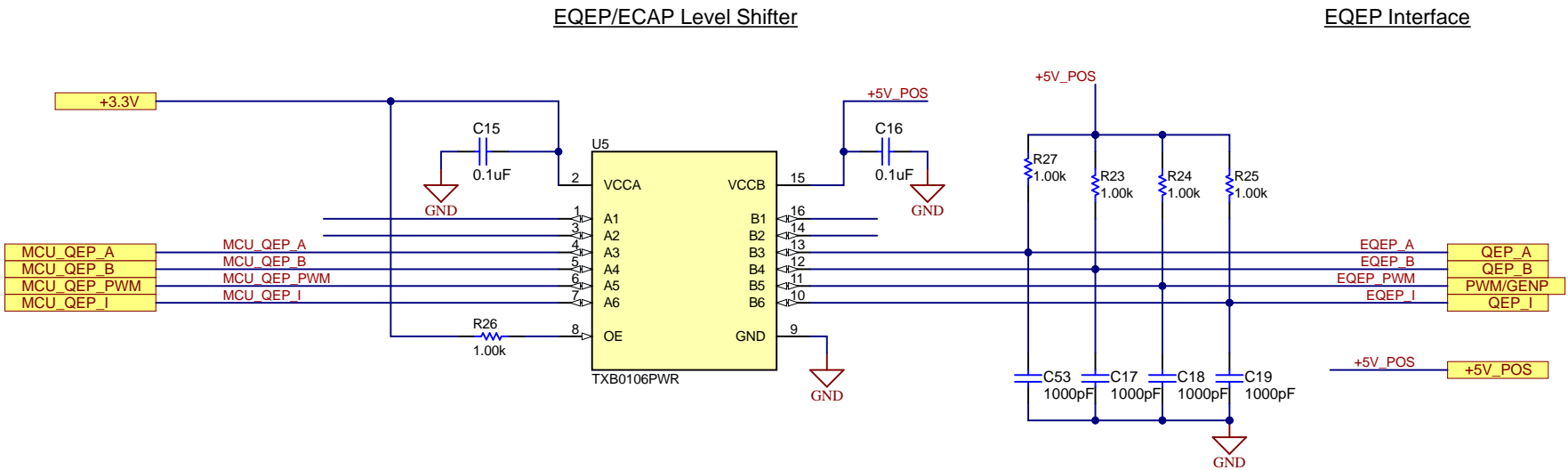
B

C

C

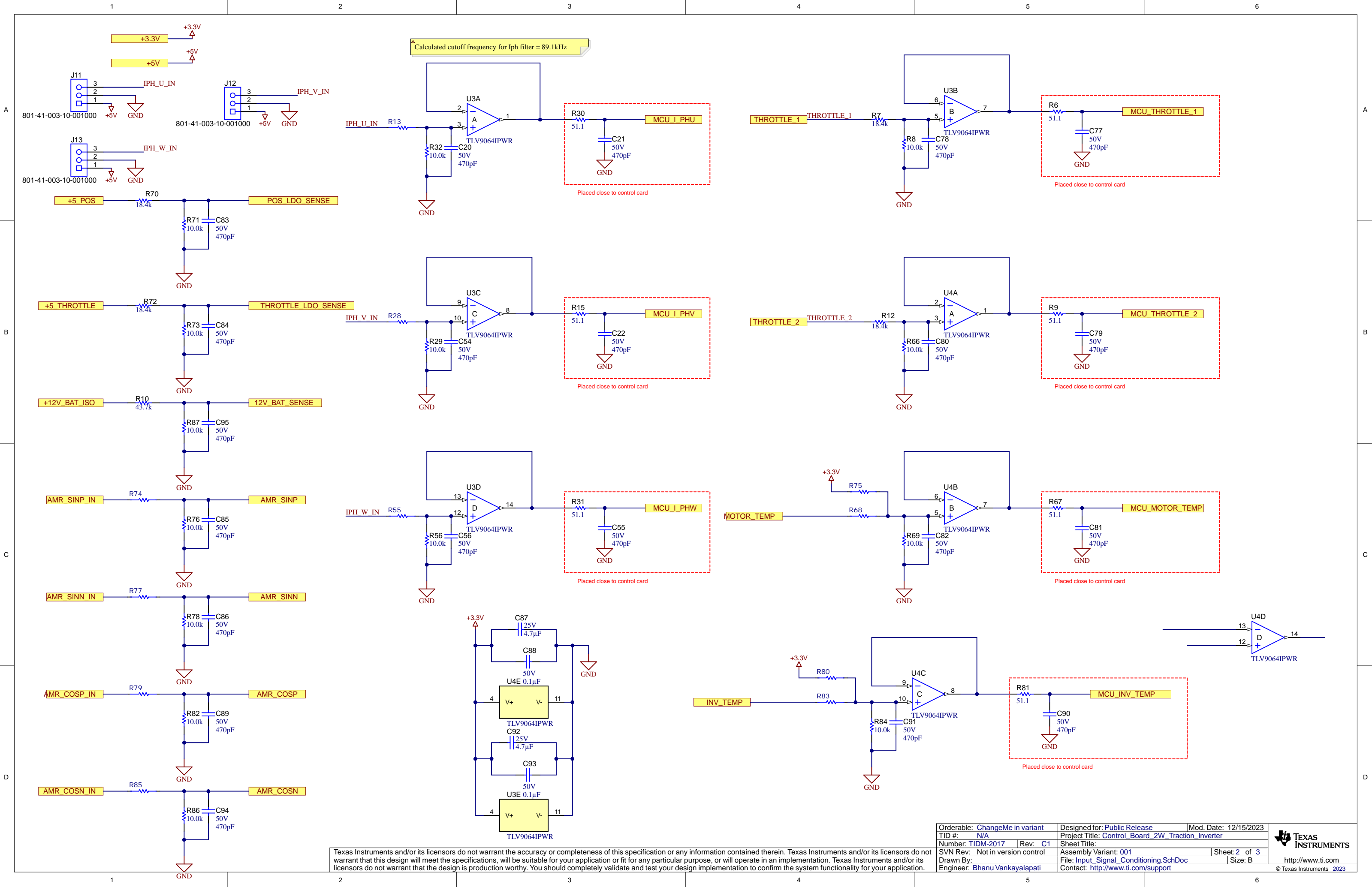
D

D



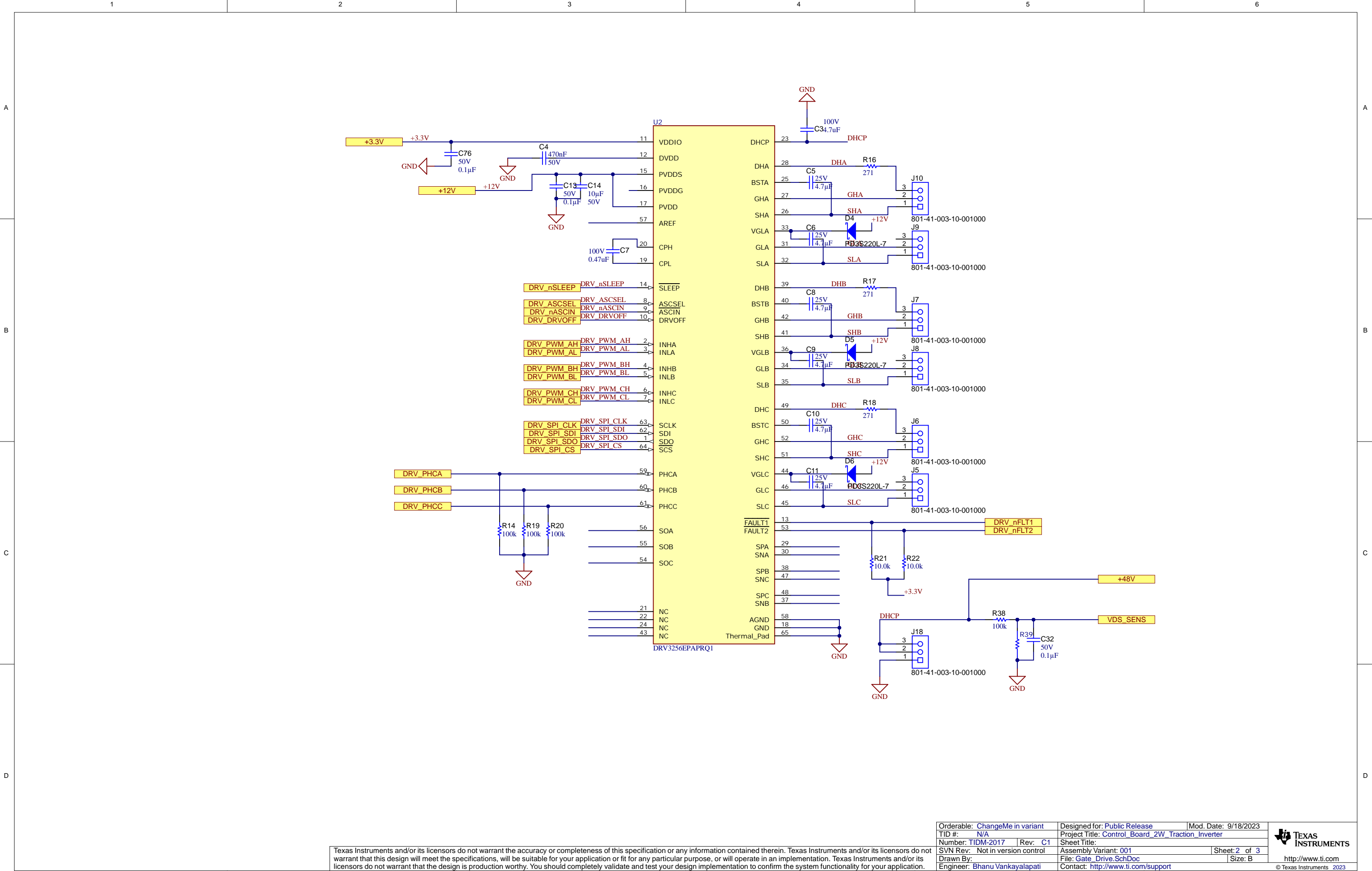
Texas Instruments and/or its licensors do not warrant the accuracy or completeness of this specification or any information contained therein. Texas Instruments and/or its licensors do not warrant that this design will meet the specifications, will be suitable for your application or fit for any particular purpose, or will operate in an implementation. Texas Instruments and/or its licensors do not warrant that the design is production worthy. You should completely validate and test your design implementation to confirm the system functionality for your application.

Orderable: <a href="#">ChangeMe in variant</a>	Designed for: <a href="#">Public Release</a>	Mod. Date: 9/14/2023
TID #: <a href="#">N/A</a>	Project Title: <a href="#">Control Board 2W Traction Inverter</a>	
Number: <a href="#">TIDM-2017</a>	Rev: <a href="#">C1</a>	Sheet Title:
SVN Rev: <a href="#">Not in version control</a>	Assembly Variant: <a href="#">001</a>	Sheet: <a href="#">2</a> of <a href="#">3</a>
Drawn By:	File: <a href="#">Position Sensing.SchDoc</a>	Size: <a href="#">B</a>
Engineer: <a href="#">Bhanu Vankayalapati</a>	Contact: <a href="#">http://www.ti.com/support</a>	



Texas Instruments and/or its licensors do not warrant the accuracy or completeness of this specification or any information contained therein. Texas Instruments and/or its licensors do not warrant that this design will meet the specifications, will be suitable for your application or fit for any particular purpose, or will operate in an implementation. Texas Instruments and/or its licensors do not warrant that the design is production worthy. You should completely validate and test your design implementation to confirm the system functionality for your application.

Orderable: ChangeMe in variant	Designed for: Public Release	Mod. Date: 12/15/2023
TID #: N/A	Project Title: Control_Board_2W_Traction_Inverter	
Number: TIDM-2017	Rev: C1	Sheet Title:
SVN Rev: Not in version control	Assembly Variant: 001	Sheet: 2 of 3
Drawn By:	File: Input_Signal_Conditioning.SchDoc	Size: B
Engineer: Bhanu Vankayalapati	Contact: <a href="http://www.ti.com/support">http://www.ti.com/support</a>	



A

B

C

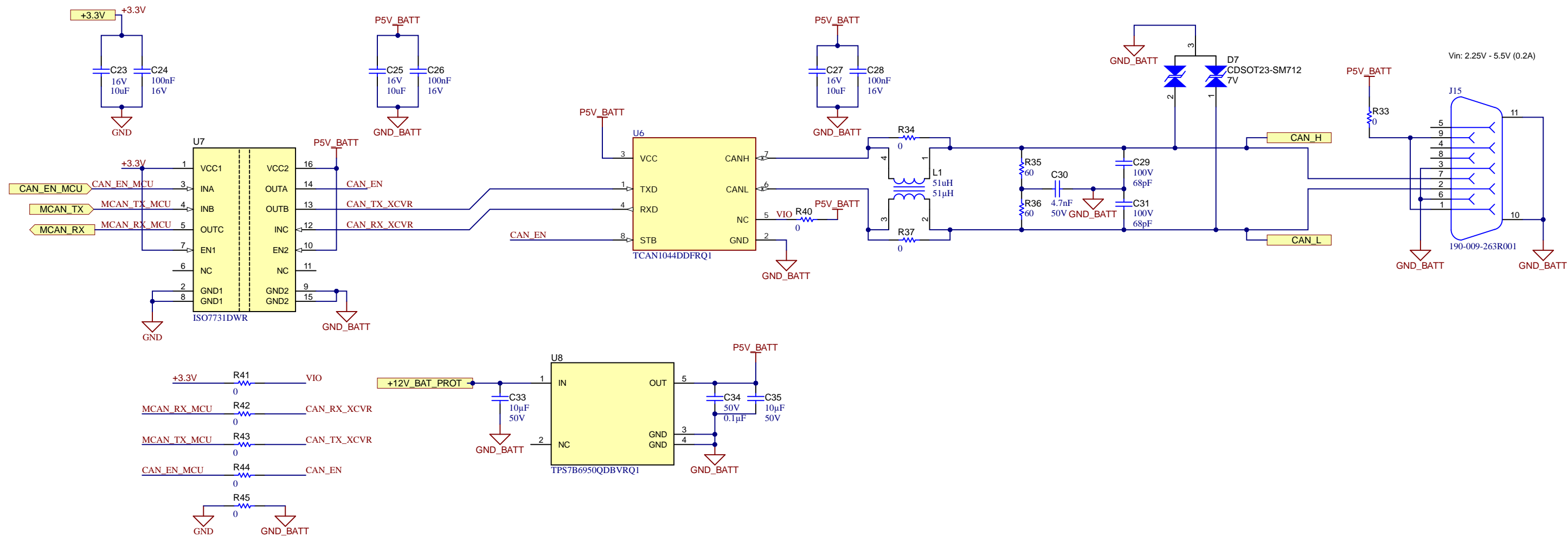
D

A

B

C

D



Texas Instruments and/or its licensors do not warrant the accuracy or completeness of this specification or any information contained therein. Texas Instruments and/or its licensors do not warrant that this design will meet the specifications, will be suitable for your application or fit for any particular purpose, or will operate in an implementation. Texas Instruments and/or its licensors do not warrant that the design is production worthy. You should completely validate and test your design implementation to confirm the system functionality for your application.

Orderable: <a href="#">ChangeMe in variant</a>	Designed for: <a href="#">Public Release</a>	Mod. Date: <a href="#">12/14/2023</a>
TID #: <a href="#">N/A</a>	Project Title: <a href="#">Control Board 2W Traction Inverter</a>	
Number: <a href="#">TIDM-2017</a>	Rev: <a href="#">C1</a>	Sheet Title:
SVN Rev: <a href="#">Not in version control</a>	Assembly Variant: <a href="#">001</a>	Sheet: <a href="#">2</a> of <a href="#">3</a>
Drawn By:	File: <a href="#">CAN_Comm.SchDoc</a>	Size: <a href="#">B</a>
Engineer: <a href="#">Bhanu Vankayalapati</a>	Contact: <a href="#">http://www.ti.com/support</a>	

