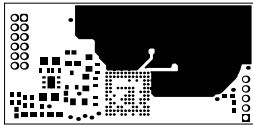


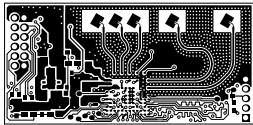
Top Overlay

ALL ARTWORK VIEWED FROM TOP SIDE	BOARD #: TIDEP-01033	REV: A	SUN REV: Not in version control
LAYER NAME = M11 Gerber Information	TID #: TIDEP-01033		
PLOT NAME = Top Overlay	GENERATED : 9/24/2024 5:24:29 PM		TEXAS INSTRUMENTS



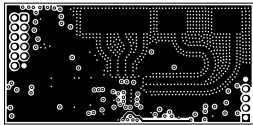
Top Solder

ALL ARTWORK VIEWED FROM TOP SIDE	BOARD #: TIDEP-01033	REV: A	SUN REV: Not in version control
LAYER NAME = M11 Gerber Information	TID #: TIDEP-01033		
PLOT NAME = Top Solder Mask	GENERATED : 9/24/2024 5:24:29 PM		TEXAS INSTRUMENTS



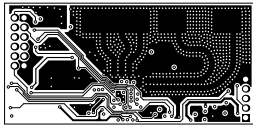
Top Layer

ALL ARTWORK VIEWED FROM TOP SIDE	BOARD #: TIDEP-01033	REV: A	SUN REV: Not in version control
LAYER NAME = M11 Gerber Information	TID #: TIDEP-01033		
PLOT NAME = Top Layer	GENERATED : 9/24/2024 5:24:29 PM		TEXAS INSTRUMENTS



L2\_GND1

ALL ARTWORK VIEWED FROM TOP SIDE	BOARD #: TIDEP-01033	REV: A	SUN REV: Not in version control
LAYER NAME = M11 Gerber Information	TID #: TIDEP-01033		
PLOT NAME = Signal Layer 1	GENERATED : 9/24/2024 5:24:29 PM		TEXAS INSTRUMENTS



L3\_SIG1

ALL ARTWORK VIEWED FROM TOP SIDE	BOARD #: TIDEP-01033	REV: A	SUN REV: Not in version control
LAYER NAME = M11 Gerber Information	TID #: TIDEP-01033		
PLOT NAME = Signal Layer 2	GENERATED : 9/24/2024 5:24:30 PM		TEXAS INSTRUMENTS



ALL ARTWORK VIEWED FROM TOP SIDE	BOARD #: TIDEP-01033	REV: A	SUN REV: Not in version control
LAYER NAME = M11 Gerber Information	TID #: TIDEP-01033		
PLOT NAME = Signal Layer 3	GENERATED : 9/24/2024 5:24:30 PM		TEXAS INSTRUMENTS



ALL ARTWORK VIEWED FROM TOP SIDE	BOARD #: TIDEP-01033	REV: A	SUN REV: Not in version control
LAYER NAME = M11 Gerber Information	TID #: TIDEP-01033		
PLOT NAME = Signal Layer 4	GENERATED : 9/24/2024 5:24:30 PM		TEXAS INSTRUMENTS

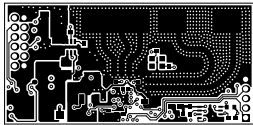


ALL ARTWORK VIEWED FROM TOP SIDE	BOARD #: TIDEP-01033	REV: A	SUN REV: Not in version control
LAYER NAME = M11 Gerber Information	TID #: TIDEP-01033		
PLOT NAME = Signal Layer 5	GENERATED : 9/24/2024 5:24:30 PM		TEXAS INSTRUMENTS





ALL ARTWORK VIEWED FROM TOP SIDE	BOARD #: TIDEP-01033	REV: A	SUN REV: Not in version control
LAYER NAME = M11 Gerber Information	TID #: TIDEP-01033		
PLOT NAME = Signal Layer 6	GENERATED : 9/24/2024 5:24:30 PM		TEXAS INSTRUMENTS



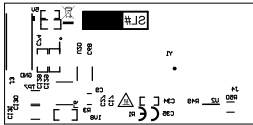
Bottom Layer

ALL ARTWORK VIEWED FROM TOP SIDE	BOARD #: TIDEP-01033	REV: A	SUN REV: Not in version control
LAYER NAME = M11 Gerber Information	TID #: TIDEP-01033		
PLOT NAME = Bottom Layer	GENERATED : 9/24/2024 5:24:31 PM		TEXAS INSTRUMENTS



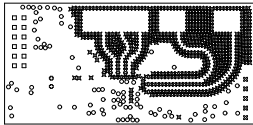
Bottom Solder

ALL ARTWORK VIEWED FROM TOP SIDE	BOARD #: TIDEP-01033	REV: A	SUN REV: Not in version control
LAYER NAME = M11 Gerber Information	TID #: TIDEP-01033		
PLOT NAME = Bottom Solder Mask	GENERATED : 9/24/2024 5:24:31 PM		TEXAS INSTRUMENTS



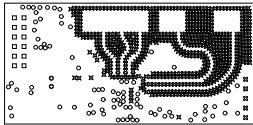
Bottom Overlay

ALL ARTWORK VIEWED FROM TOP SIDE	BOARD #: TIDEP-01033	REV: A	SUN REV: Not in version control
LAYER NAME = M11 Gerber Information	TID #: TIDEP-01033		
PLOT NAME = Bottom Overlay	GENERATED : 9/24/2024 5:24:31 PM		TEXAS INSTRUMENTS



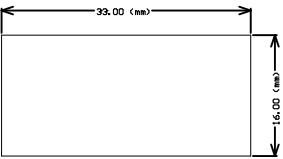
Symbol	Count	Hole Size	Plated	Hole Type	Drill Layer Pair	Via/Pad	Pad Shape	Template	Hole Tolerance (+)	Hole Tolerance (-)
⊕	2	0.200mm <7.87mil>	PTH	Round	Top Layer - Bottom Layer	Via	Rounded	v50h20m50mx0		
⊗	5	0.700mm <27.56mil>	PTH	Round	Top Layer - Bottom Layer	Pad	<Mixed>	<Mixed>		
□	12	0.700mm <27.56mil>	PTH	Round	Top Layer - Bottom Layer	Pad	<Mixed>	<Mixed>	0.050mm <1.97mil>	0.050mm <1.97mil>
○	84	0.203mm <8.00mil>	PTH	Round	Top Layer - Bottom Layer	Via	Rounded	v46h20m0mx0		
⊗	672	0.203mm <8.00mil>	PTH	Round	Top Layer - Bottom Layer	Via	Rounded	v46h20m0mx0<To18-8>	0.076mm <3.00mil>	0.076mm <3.00mil>
	775 Total									

ALL ARTWORK VIEWED FROM TOP SIDE	BOARD #: TIDEP-01033	REV: A	SUN REV: Not in version control
LAYER NAME = M11 Gerber Information Drill Drawing	TID #: TIDEP-01033		
PLOT NAME = Drill Drawing	GENERATED : 9/24/2024 5:24:32 PM	TEXAS INSTRUMENTS	



Symbol	Count	Hole Size	Plated	Hole Type	Drill Layer Pair	Via/Pad	Pad Shape	Template	Hole Tolerance (+)	Hole Tolerance (-)
⊕	2	0.200mm <7.87mil>	PTH	Round	Top Layer - Bottom Layer	Via	Rounded	v50h20m50mx0		
⊗	5	0.700mm <27.56mil>	PTH	Round	Top Layer - Bottom Layer	Pad	<Mixed>	<Mixed>		
□	12	0.700mm <27.56mil>	PTH	Round	Top Layer - Bottom Layer	Pad	<Mixed>	<Mixed>	0.050mm <1.97mil>	0.050mm <1.97mil>
○	84	0.203mm <8.00mil>	PTH	Round	Top Layer - Bottom Layer	Via	Rounded	v46h20m0mx0		
⊗	672	0.203mm <8.00mil>	PTH	Round	Top Layer - Bottom Layer	Via	Rounded	v46h20m0mx0<Tol8-8>	0.076mm <3.00mil>	0.076mm <3.00mil>
	775 Total									

ALL ARTWORK VIEWED FROM TOP SIDE	BOARD #: TIDEP-01033	REV: A	SUN REV: Not in version control
LAYER NAME = M11 Gerber Information Drill Drawing	TID #: TIDEP-01033		
PLOT NAME = Drill Drawing	GENERATED : 9/24/2024 5:24:33 PM	TEXAS INSTRUMENTS	



ALL ARTWORK VIEWED FROM TOP SIDE	BOARD #: TIDEP-01033	REV: A	SUN REV: Not in version control
M2 Board Dimensions LAYER NAME = M11 Gerber Information	TID #: TIDEP-01033		
PLOT NAME = Board Dimensions	GENERATED : 9/24/2024 5:24:34 PM		TEXAS INSTRUMENTS

## IMPORTANT NOTICE AND DISCLAIMER

TI PROVIDES TECHNICAL AND RELIABILITY DATA (INCLUDING DATA SHEETS), DESIGN RESOURCES (INCLUDING REFERENCE DESIGNS), APPLICATION OR OTHER DESIGN ADVICE, WEB TOOLS, SAFETY INFORMATION, AND OTHER RESOURCES "AS IS" AND WITH ALL FAULTS, AND DISCLAIMS ALL WARRANTIES, EXPRESS AND IMPLIED, INCLUDING WITHOUT LIMITATION ANY IMPLIED WARRANTIES OF MERCHANTABILITY, FITNESS FOR A PARTICULAR PURPOSE OR NON-INFRINGEMENT OF THIRD PARTY INTELLECTUAL PROPERTY RIGHTS.

These resources are intended for skilled developers designing with TI products. You are solely responsible for (1) selecting the appropriate TI products for your application, (2) designing, validating and testing your application, and (3) ensuring your application meets applicable standards, and any other safety, security, regulatory or other requirements.

These resources are subject to change without notice. TI grants you permission to use these resources only for development of an application that uses the TI products described in the resource. Other reproduction and display of these resources is prohibited. No license is granted to any other TI intellectual property right or to any third party intellectual property right. TI disclaims responsibility for, and you will fully indemnify TI and its representatives against, any claims, damages, costs, losses, and liabilities arising out of your use of these resources.

TI's products are provided subject to [TI's Terms of Sale](#) or other applicable terms available either on [ti.com](https://www.ti.com) or provided in conjunction with such TI products. TI's provision of these resources does not expand or otherwise alter TI's applicable warranties or warranty disclaimers for TI products.

TI objects to and rejects any additional or different terms you may have proposed.

Mailing Address: Texas Instruments, Post Office Box 655303, Dallas, Texas 75265  
Copyright © 2024, Texas Instruments Incorporated