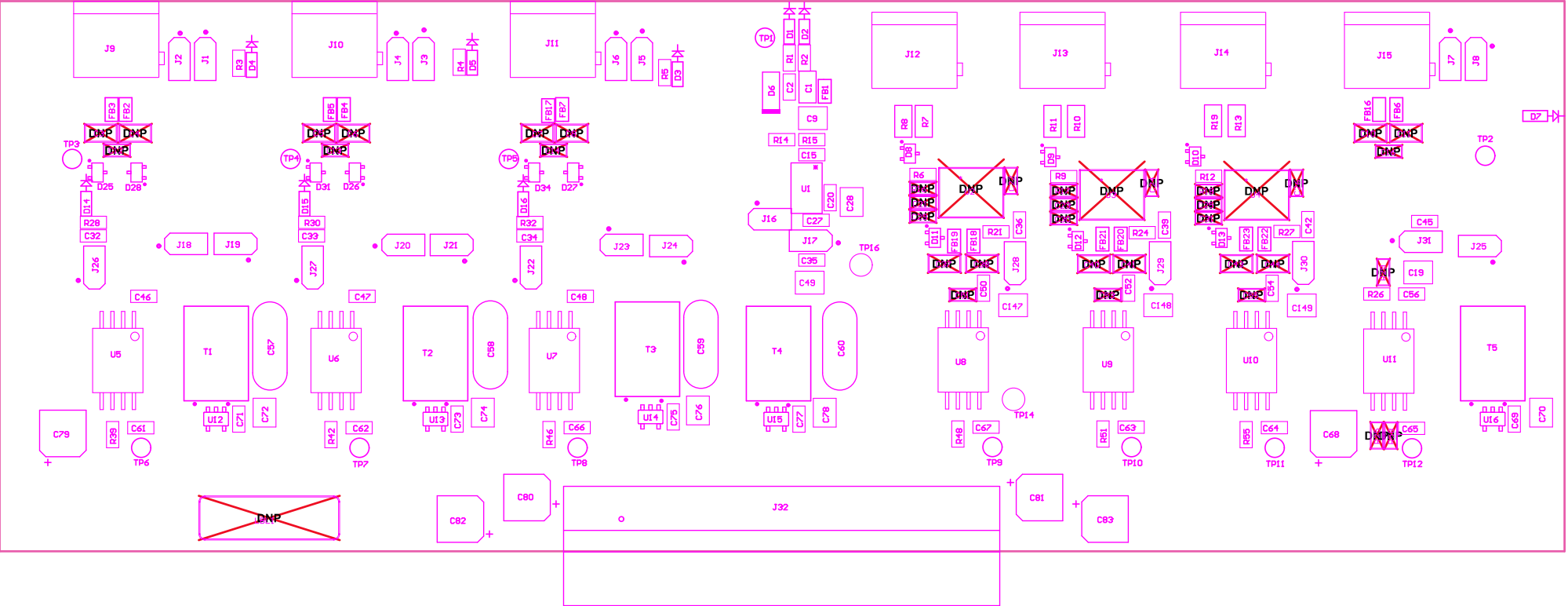


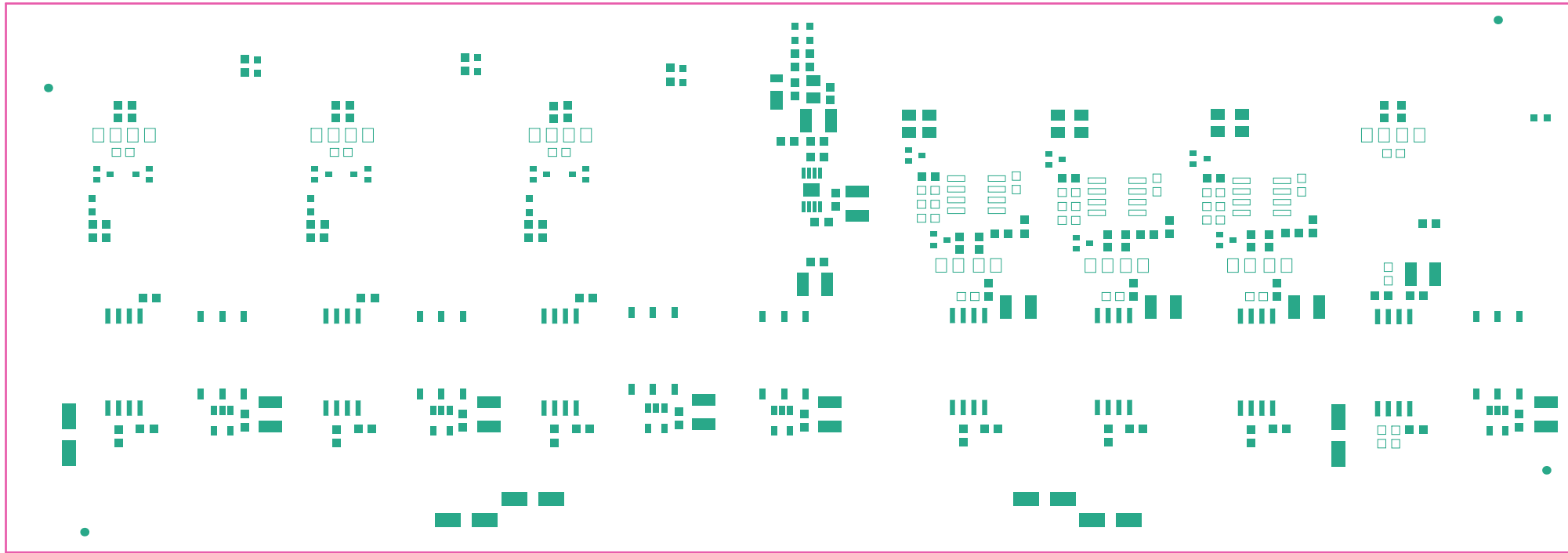
- ZZ1 ■ Install label in silkscreened box after final wash. Text shall be 8 pt font. Text shall be per the Label Table in the PDF schematic.
- ZZ2 ■ These assemblies are ESD sensitive, ESD precautions shall be observed.
- ZZ3 ■ These assemblies must be clean and free from flux and all contaminants. Use of no clean flux is not acceptable.
- ZZ4 ■ These assemblies must comply with workmanship standards IPC-A-610 Class 2, unless otherwise specified.



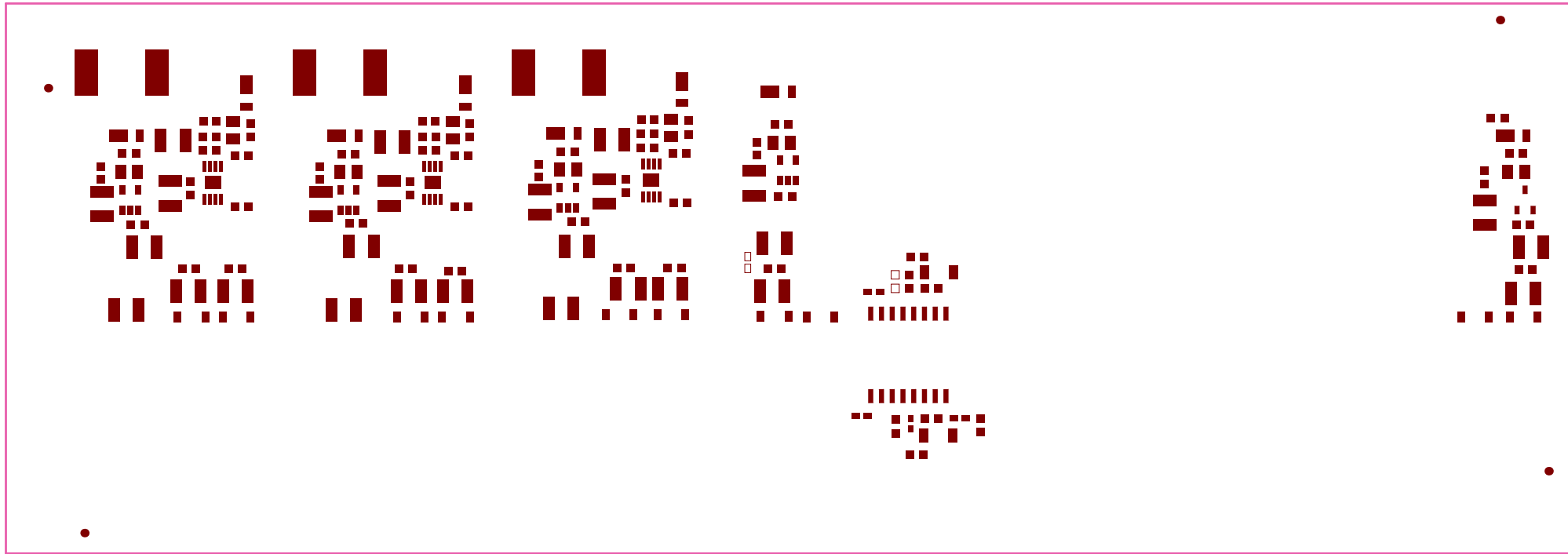
COMPONENTS MARKED 'DNP' SHOULD NOT BE POPULATED.

ASSEMBLY VARIANT: 001

PCB VIEWED FROM TOP SIDE	BOARD #:	TIDA-00080_AMC13x6	REV:	E1	SUN REV:	Not In VersionControl
LAYER NAME =	Top Assembly					TID #: 00080
PLOT NAME =	Top LayerAssembly Drawing		GENERATED :	9/11/2019 10:52:50 AM	TEXAS INSTRUMENTS	



Top Paste



Bottom Paste

PLOT NAME = Bottom Layer Assembly Drawing		GENERATED : 2/11/2018 10:25:23 AM		TEXAS INSTRUMENTS
LAYER NAME = Bottom Assembly		TID #: 00080		
PCB VIEWED FROM BOTTOM SIDE		BOARD #: TIDA-00080_00013Rev	REV: E1	SWN REV: Not in VersionControl

Bottom Layer Assembly Drawing

2

2011/11/25

MA 32:52:1

TEXAS INSTRUMENTS

```

100                                     :TNAIRAU Y_8M322A

```

COMPONENTS MARKED 'DNP' SHOULD NOT BE POPULATED.

