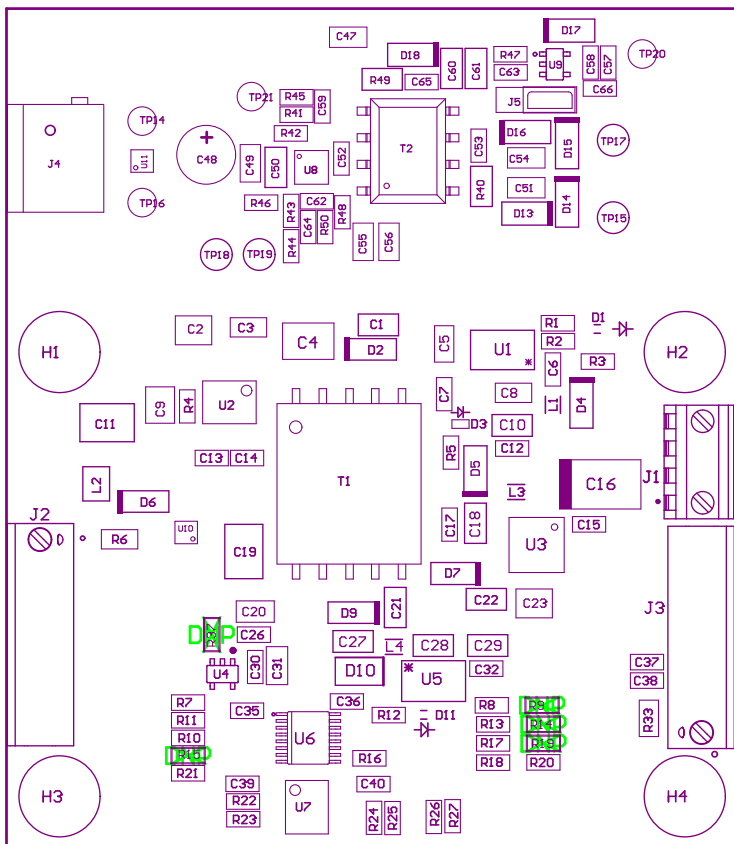


ZZ1 ■ Install label in silkscreened box after final wash. Text shall be 8 pt font. Text shall be per the Label Table in the PDF schematic.

Z22 ■ These assemblies are ESD sensitive, ESD precautions shall be observed.

Z23 ■ These assemblies must be clean and free from flux and all contaminants. Use of no clean flux is not acceptable.

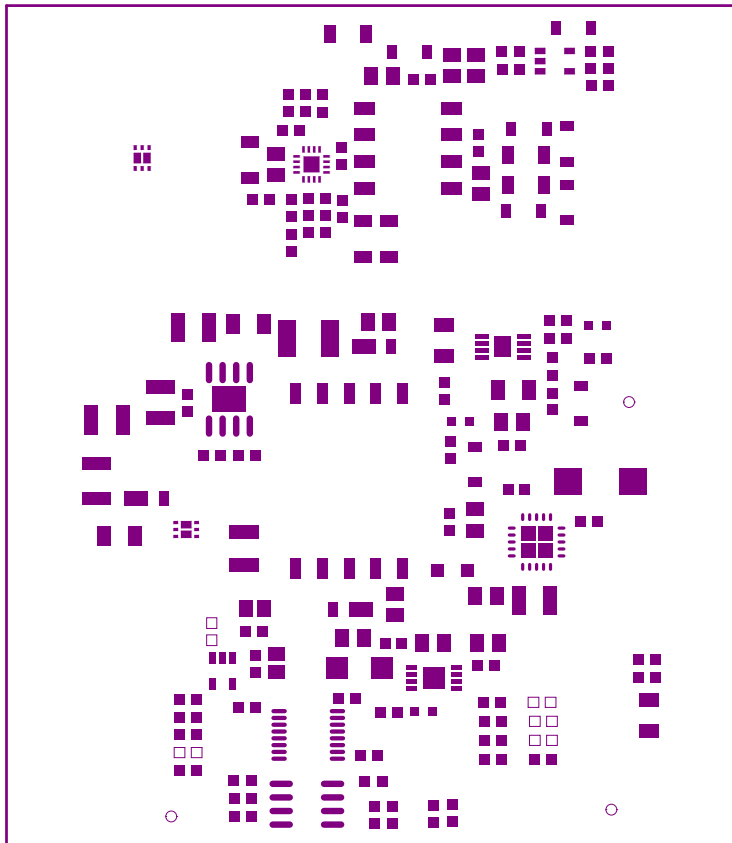
Z24 ■ These assemblies must comply with workmanship standards IPC-A-610 Class 2, unless otherwise specified.



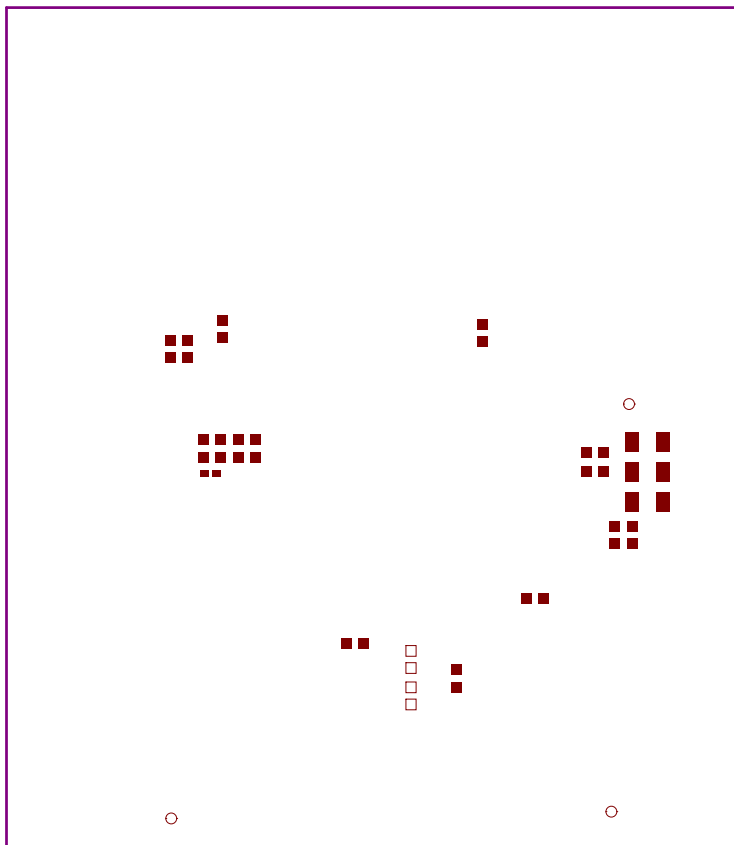
COMPONENTS MARKED 'DNP' SHOULD NOT BE POPULATED.

ASSEMBLY VARIANT: 001

PCB VIEWED FROM TOP SIDE	BOARD #:	TIDA-00300	REV: E3	SUN REV:	Not In VersionControl	
LAYER NAME =	RS Assembly Top					
	TID #:	00300				
PLOT NAME =	Top LayerAssembly Drawing			GENERATED :	4/10/2019 12:06:08 PM	TEXAS INSTRUMENTS



Top Paste



Bottom Paste

